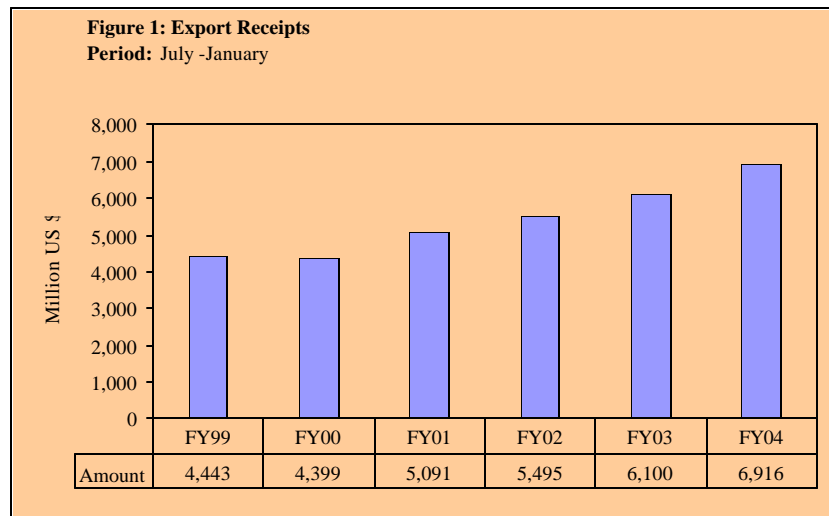


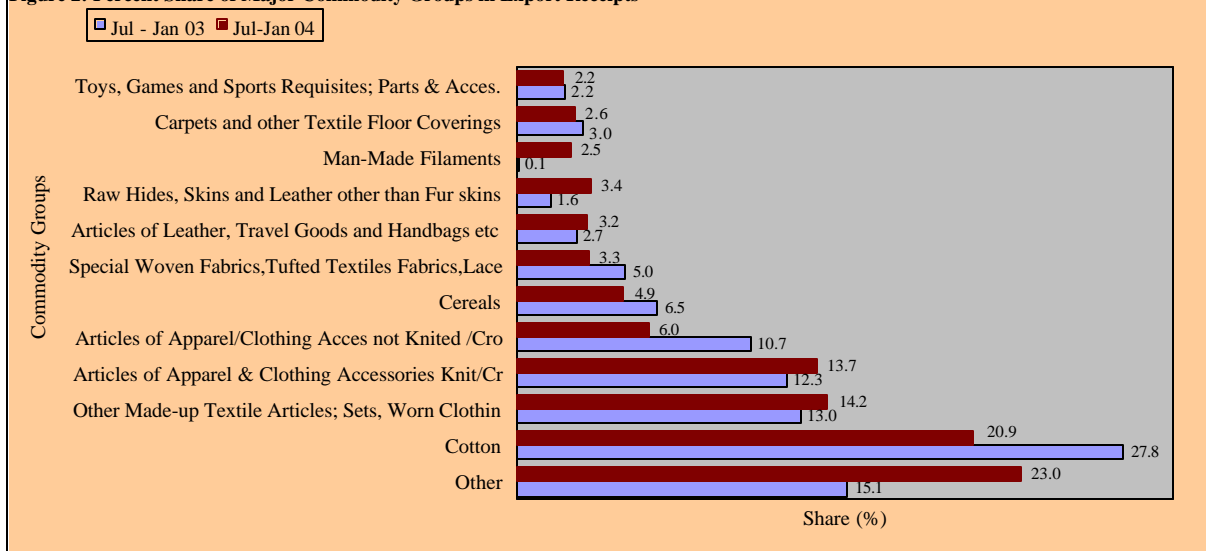
## SUMMARY

Amount in million		
<b>Table 1: Key Indicators of Export Receipts</b>	<b>Pak. Rs.</b>	<b>US \$</b>
January 2004	59,555	1,038
December 2003	67,198	1,171
%Change during January 2004 over December 2003	-11.4	-11.4
January 2003	54,669	940
%Change during January 2004 over January 2003	8.9	10.4
July 2003– January 2004	398,172	6,916
July 2002– January 2003	359,770	6,100
%Change during July 2003 - January 2004 over July 2002 - January 2003	10.7	13.4
Monthly average during July 2003– January 2004	56,882	988
Monthly average during July 2002– January 2003	51,396	871
FY03	628,655	10,750
FY02	573,987	9,345
%Change during FY03 over FY02	9.5	15.0
Monthly average during FY03	52,388	896
Monthly average during FY02	47,832	779



**Table 2: Export Receipts by Major Commodity Groups**

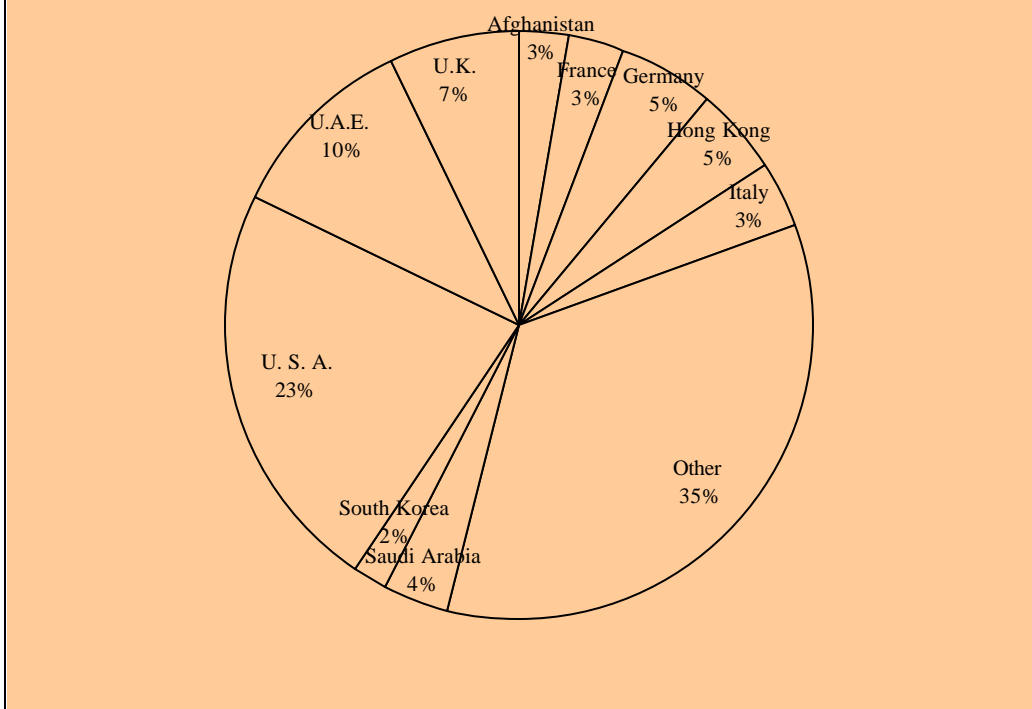
Commodity	Amount in million					
	January			July - January		
	2004	2004	2003	2003-2004	2002-2003	%
	Pak Rs.	US \$				
Cotton	13,197	230	257	1,447	1,693	-14.5
Articles of Apparel & Clothing Accessories Knitted / Crocheted	8,353	146	140	984	792	24.2
Other Made-up Textile Articles; Sets, Worn Clothing	7,645	133	114	948	753	25.9
Articles of Apparel/Clothing Accessories not Knitted / Crocheted.	3,301	58	94	416	653	-36.3
Cereals	3,160	55	64	338	394	-14.2
Articles of Leather, Travel Goods and Handbags etc	2,121	37	38	229	304	-24.7
Raw Hides, Skins and Leather other than Fur skins	2,037	35	24	223	167	33.5
Special Woven Fabrics, Tufted Textiles Fabrics, Lace	1,894	33	11	235	96	144.8
Man-Made Filaments	1,533	27	1	170	7	2328.6
Toys, Games and Sports Requisites; Parts & Accessories	1,491	26	26	183	184	-0.5
Carpets and other Textile Floor Coverings	1,427	25	19	150	134	11.9
Man-Made Staple Fibers	1,069	19	6	115	38	202.6
Mineral Fuels, Oils and Their Distillation Product	1,003	17	19	96	83	15.7
Fish and Crustaceans	777	14	12	79	74	6.8
Optical, Photographic, Measuring and Medical Inst.	768	13	14	100	101	-1.0
Impregnated, Coated, Covered or Lamented Textile Fabrics	734	13	1	103	9	1044.4
Plastics and Articles thereof	715	12	8	91	35	160.0
Sugars and Sugar Confectionery	590	10	5	49	35	40.0
Other	7,740	135	87	960	548	75.2
<b>Total</b>	<b>59,555</b>	<b>1,038</b>	<b>940</b>	<b>6,916</b>	<b>6,100</b>	<b>13.4</b>

**Figure 2: Percent Share of Major Commodity Groups in Export Receipts**

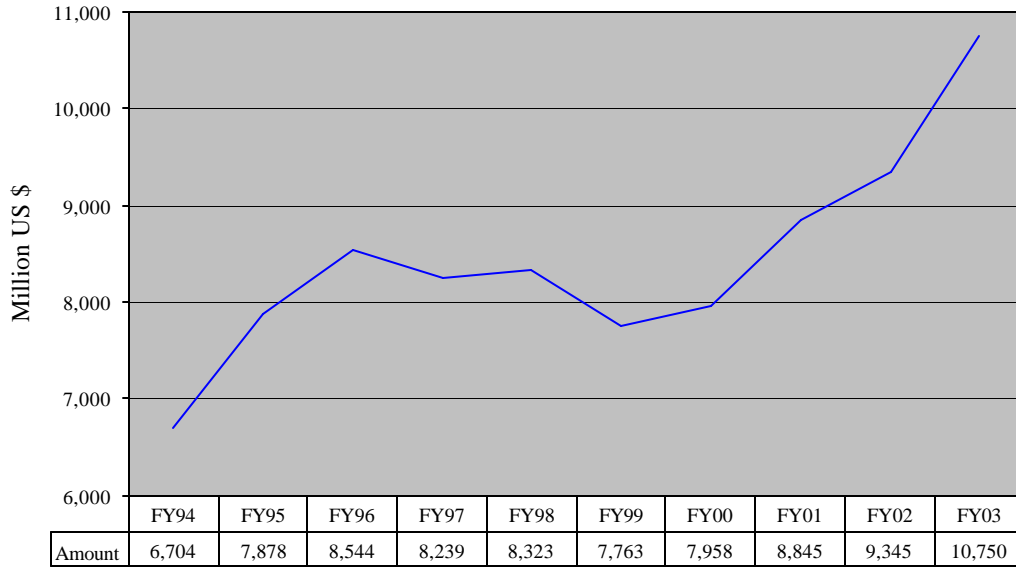
**Table 3: Export Receipts by Major Countries**

Country	Amount in million					
	January			July January		
	2004	2004	2003	2003-2004	2002-2003	% Change
	Pak Rs			US \$		
U. S. A.	13,180	230	202	1,589	1,473	7.9
U.K.	4,246	74	69	503	443	13.5
U.A.E.	4,635	81	103	719	624	15.2
Germany	3,269	57	53	366	304	20.4
Hong Kong	2,555	45	53	338	365	-7.4
Saudi Arabia	2,126	37	49	250	238	5.0
Italy	1,990	35	27	238	163	46.0
Afghanistan	1,854	32	7	192	43	346.5
France	1,658	29	31	204	175	16.6
South Korea	1,543	27	20	124	140	-11.4
Netherlands	1,477	26	21	149	135	10.4
Spain	1,373	24	17	169	118	43.2
Belgium	1,331	23	18	142	117	21.4
Singapore	1,285	22	7	91	79	15.2
China	1,126	20	16	133	106	25.5
Other	15,907	276	247	1,709	1,577	8.4
<b>Total</b>	<b>59,555</b>	<b>1,038</b>	<b>940</b>	<b>6,916</b>	<b>6,100</b>	<b>13.4</b>

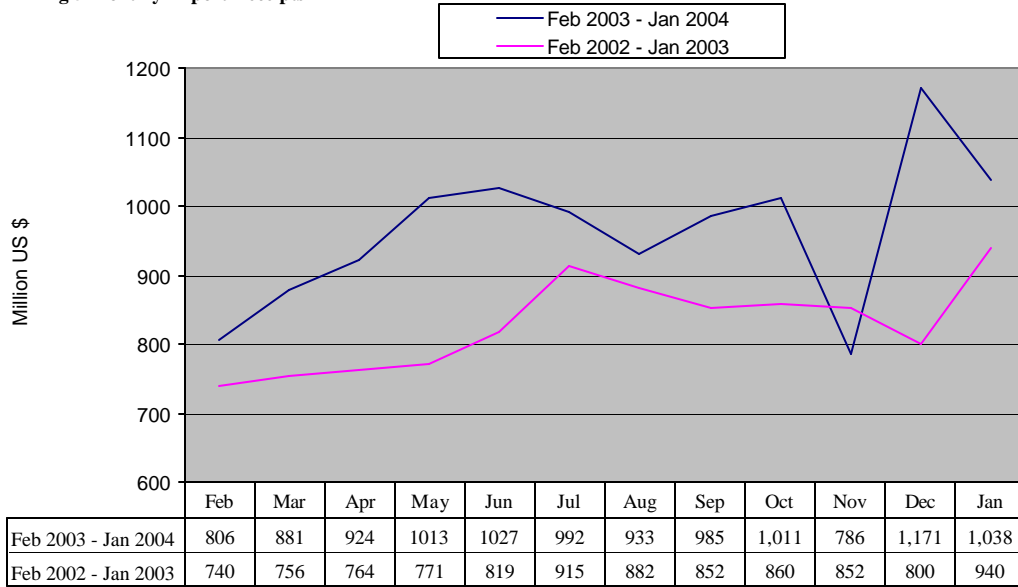
**Figure 3: % Share of Major Countries in Export Receipts**  
**Period: July 2003 - January 2004**



**Figure 4: Yearly Export Receipts**



**Fig 5 Monthly Export Receipts**



**Table4: Export Receipts Series**

Million Rs.

Period	1994-95	1995-96	1996-97	1997-98	1998-99	1999-00	2000-01	2001-02	2002-03	2003-04
Annual	243,091.5	287,181.1	321,610.8	359,261.5	389,019.2	412,082.1	517,495.6	573,987.2	628,655.4	
Growth (%)	20.1	18.1	12.0	11.7	8.3	5.9	25.6	10.5	9.5	
<b>Quarter-wise</b>										
Quarter-I	56,213.7 (23.1)	63,324.7 (22.1)	70,512.1 (21.9)	85,907.9 (23.9)	92,523.2 (23.8)	92,763.8 (22.5)	118,869.7 (23.0)	144,370.5 (25.2)	157,696.1 (25.1)	168,165.9
Quarter-II	57,378.2 (23.6)	70,934.6 (24.7)	81,271.5 (25.3)	91,938.5 (25.6)	94,906.2 (24.4)	98,966.7 (24.0)	119,704.7 (23.1)	150,425.4 (26.2)	147,405.4 (23.4)	170,451.2
Quarter-III	61,190.8 (37.5)	77,922.1 (27.1)	83,132.8 (25.8)	91,762.1 (25.5)	101,948.1 (26.2)	109,361.2 (26.5)	136,849.1 (26.4)	137,656.1 (24.0)	152,416.7 (24.2)	
Quarter-IV	68,308.8 (28.1)	74,999.8 (26.1)	86,694.2 (27.0)	89,653.0 (25.0)	99,641.7 (25.6)	110,990.4 (26.9)	142,072.1 (27.5)	141,535.2 (24.7)	171,137.2 (27.2)	
<b>Month-wise</b>										
July	18,049.8 (7.4)	21,907.2 (7.6)	23,884.4 (7.4)	29,859.6 (8.3)	30,114.1 (7.7)	32,118.9 (7.8)	36,566.6 (7.1)	46,206.5 (8.1)	54,731.1 (8.7)	57,308.1
August	19,341.1 (8.0)	22,441.0 (7.8)	22,410.5 (7.0)	28,053.3 (7.8)	30,789.3 (7.9)	28,909.1 (7.0)	41,241.3 (8.0)	51,444.5 (9.0)	52,468.8 (8.3)	53,894.1
September	18,822.8 (7.7)	18,976.5 (6.6)	24,217.2 (7.5)	27,995.0 (7.8)	31,619.8 (8.1)	31,735.8 (7.7)	41,061.8 (7.9)	46,719.5 (8.1)	50,496.2 (8.0)	56,963.7
October	19,539.2 (8.0)	22,347.2 (7.8)	27,890.8 (8.7)	33,014.4 (9.2)	32,445.0 (8.3)	31,735.8 (7.7)	39,986.2 (7.7)	57,750.7 (10.1)	50,772.7 (8.1)	58,193.6
November	18,724.7 (7.7)	23,749.5 (8.3)	25,545.2 (7.9)	28,551.8 (7.9)	30,154.9 (7.8)	31,941.1 (7.8)	38,842.6 (7.5)	48,957.5 (8.5)	49,925.9 (7.9)	45,059.3
December	19,114.3 (7.9)	24,837.9 (8.6)	28,135.5 (8.7)	30,372.3 (8.5)	32,306.2 (8.3)	35,289.7 (8.6)	40,875.9 (7.9)	43,717.5 (7.6)	46,706.8 (7.4)	67,198.3
January	21,603.7 (8.9)	27,000.0 (9.4)	25,433.7 (7.9)	28,095.3 (7.8)	33,520.1 (8.6)	35,796.5 (8.7)	48,728.2 (9.4)	47,703 (8.3)	54,668.6 (8.7)	59,554.7
February	17,783.0 (7.3)	23,466.1 (8.2)	26,727.5 (8.3)	31,554.7 (8.8)	33,477.2 (8.6)	34,895.6 (8.5)	41,297.8 (8.0)	44,534.4 (7.8)	46,788.2 (7.4)	
March	21,804.1 (9.0)	27,456.0 (9.6)	30,971.6 (9.6)	32,112.1 (8.9)	34,950.8 (9.0)	38,669.1 (9.4)	46,823.1 (9.0)	45,418.7 (7.9)	50,959.9 (8.1)	
April	22,906.9 (9.4)	24,201.8 (8.4)	29,725.5 (9.2)	31,557.4 (8.8)	36,146.0 (9.3)	33,202.6 (8.1)	44,794.7 (8.7)	45,944.7 (8.0)	53,358.9 (8.5)	
May	22,876.2 (9.4)	25,337.6 (8.8)	28,658.7 (8.9)	28,788.7 (8.0)	31,055.4 (8.0)	35,401.3 (8.6)	48,124.0 (9.3)	46,348 (8.1)	58,454.1 (9.3)	
June	22,525.7 (9.3)	25,460.4 (8.9)	28,310.0 (8.8)	29,306.9 (8.2)	32,440.3 (8.3)	42,386.5 (10.3)	49,153.3 (9.5)	49,242.5 (8.6)	59,324.1 (9.4)	

Notes: 1. Figures in parentheses are percentage to annual export receipts of the respective years  
2. Due to rounding off separate items, totals may show minor differences

**Table5: Export Receipts Series**

Period	Million US \$									
	1994-95	1995-96	1996-97	1997-98	1998-99	1999-00	2000-01	2001-02	2002-03	2003-04
Annual	7,877.5	8,543.9	8,239.1	8,323.1	7,762.8	7,958.4	8,844.5	9,344.9	10,750.0	
Growth (%)	17.5	8.5	-3.6	1.0	-6.7	2.5	11.1	5.7	15.0	
<b><u>Quarter-wise</u></b>										
Quarter-I	1,831.7 (23.3)	2,019.9 (23.7)	1,967.9 (23.9)	2,115.2 (25.4)	1,887.4 (24.3)	1,795.7 (22.6)	2,192.2 (24.8)	2,251.6 (24.1)	2,649.2 (24.6)	2,910.5
Quarter-II	1,865.0 (23.7)	2,111.1 (24.7)	2,058.1 (25.0)	2,109.0 (25.3)	1,883.1 (24.3)	1,912.0 (24.0)	2,073.9 (23.5)	2,450.9 (26.2)	2,511.5 (23.4)	2,967.7
Quarter-III	1,977.2 (25.1)	2,262.0 (26.5)	2,066.9 (25.1)	2,077.3 (25.0)	2,039.9 (26.3)	2,111.8 (26.5)	2,291.3 (25.9)	2,288.4 (24.5)	2,625.8 (24.4)	
Quarter-IV	2,203.6 (28.0)	2,150.9 (25.2)	2,146.1 (26.1)	2,021.6 (24.3)	1,952.4 (25.2)	2,138.9 (26.9)	2,287.1 (25.9)	2,354.1 (25.2)	2,963.4 (27.6)	
<b><u>Month-wise</u></b>										
July	588.5 (7.5)	702.1 (8.2)	676.5 (8.2)	735.4 (8.8)	639.6 (8.2)	622.4 (7.8)	696.4 (7.9)	721.0 (7.7)	915.4 (8.5)	992.5
August	630.6 (8.0)	715.7 (8.4)	629.9 (7.7)	690.6 (8.3)	616.7 (7.9)	559.8 (7.0)	764.0 (8.6)	802.4 (8.6)	881.7 (8.2)	932.6
September	612.6 (7.8)	602.1 (7.1)	661.5 (8.0)	689.2 (8.3)	631.1 (8.1)	613.5 (7.7)	731.9 (8.3)	728.3 (7.8)	852.1 (7.9)	985.4
October	635.9 (8.1)	696.0 (8.2)	730.9 (8.9)	774.6 (9.3)	644.0 (8.3)	613.2 (7.7)	687.5 (7.8)	928.3 (9.9)	859.8 (8.0)	1,011.0
November	609.1 (7.7)	691.7 (8.1)	627.7 (7.6)	646.6 (7.8)	593.6 (7.7)	617.0 (7.8)	681.4 (7.7)	800.9 (8.6)	852.2 (7.9)	785.9
December	620.0 (7.9)	723.4 (8.5)	699.5 (8.5)	687.8 (8.3)	645.4 (8.3)	681.7 (8.6)	704.9 (8.0)	721.6 (7.7)	799.6 (7.4)	1,170.8
January	698.7 (8.9)	786.2 (9.2)	632.4 (7.7)	636.2 (7.6)	672.2 (8.7)	691.4 (8.7)	825.0 (9.3)	792.4 (8.5)	939.6 (8.7)	1,037.5
February	574.2 (7.3)	681.5 (8.0)	664.5 (8.1)	714.5 (8.6)	667.9 (8.6)	673.7 (8.5)	692.7 (7.8)	740.3 (7.9)	805.6 (7.5)	
March	704.3 (8.9)	794.3 (9.3)	770.1 (9.4)	726.6 (8.6)	699.9 (9.0)	746.6 (9.4)	773.6 (8.8)	755.7 (8.1)	880.6 (8.2)	
April	740.1 (9.4)	697.5 (8.2)	738.4 (9.0)	712.5 (8.6)	717.0 (9.2)	641.1 (8.1)	733.5 (8.3)	764.2 (8.2)	923.5 (8.6)	
May	738.1 (9.4)	727.1 (8.5)	708.6 (8.6)	651.9 (7.8)	607.8 (7.8)	683.5 (8.6)	778.3 (8.8)	770.9 (8.3)	1,012.5 (9.4)	
June	725.4 (9.2)	726.3 (8.5)	699.1 (8.5)	657.2 (7.9)	627.5 (8.1)	814.4 (10.2)	775.3 (8.8)	819.0 (8.8)	1,027.4 (9.6)	

Notes: 1. Figures in parentheses are percentage to annual export receipts of the respective years  
2. Due to rounding off separate items, totals may show minor differences