

Inflation Monitor

February 2017



State Bank of Pakistan

Statistics & DWH Department

ISSN 1992-8327 (print)

ISSN 1992-8335 (online)

The analysis in this document is based on data

- Provided by Pakistan Bureau of Statistics (PBS), for domestic inflation analysis
- Retrieved from IMF & World Bank websites for global inflation analysis

http://www.sbp.org.pk/publications/inflation_Monitor

Contents		Page
1.	Inflation in Brief	1
2.	City- wise Inflation	7
3.	Income Group- wise Inflation	8
4.	Weighted Contribution	10
5.	Inflation Diffusion Index	11
6.	Domestic Commodity Prices	12
7.	Global Commodity Prices	12
8.	Seasonal Adjustment in CPI	13
Annexure A		
Table A1	CPI Inflation by Groups	17
Table A2	Distribution of Price Changes (YoY) of CPI Basket	17
Table A3	Top and Bottom 15 Contributors to CPI Inflation (YoY)	18
Table A3.1	Top and Bottom 15 Contributors to CPI Inflation (MoM)	19
Table A3.2	Top Fifteen Contributors to CPI Inflation (YoY)	20
Table A3.3	Top Ten Contributors to CPI Food Inflation (YoY)	21
Table A3.4	Top Ten Contributors to CPI Non-Food Inflation (YoY)	22
Table A4	Distribution of Price Changes (YoY) - Selected CPI Items	23
Table A5	City-wise CPI Inflation by Income Groups	24
Table A6	City- wise CPI Inflation (YoY)	25
Table A7	Income Group-wise Inflation	26
Table A8	SPI Item-wise Price Movements	27
Table A9	Distribution of Price Changes (YoY)-WPI Items	28
Table A10	Consumer Price Index Numbers by Major Groups and Composite Commodities	29-30
Table A11	Wholesale Price Index Numbers by Major Groups and Composite Commodities	31-32
Table A12	Price Indices	33
Table A13	International Commodity Prices/ Indices	34
Table A14	CPI Data Series- Original and Seasonally Adjusted	35
Table A15	CPI Food Data Series- Original and Seasonally Adjusted	36
Table A16	CPI Monthly & Average Seasonal Factors	37
Table A17	CPI Food Monthly & Average Seasonal Factors	37
Table A18	CPI Month-on-Month % Change- Original & Seasonally Adjusted	38
Table A19	CPI Food Month-on-Month % Change- Original & Seasonally Adjusted	39
Figure A1	CPI Non-food Inflation	40
Figure A2	Frequency Distribution of Price Changes of CPI Items	41
Figure A3	Frequency Distribution of Price Changes of WPI Commodities	42
Figure A4	Group- wise/ overall Inflation Diffusion Index and Respective/ Overall YoY Inflation	43
Annexure B	Technical Notes	44-47

Team

- Naseer Ahmad Additional Director
naseer.ahmed@sbp.org.pk
- Muhammad Ashfaq Deputy Director
muhammad.ashfaqch@sbp.org.pk

Review

Inflation in Brief

1. Headline CPI inflation (2007-08=100) is recorded at level of 4.2 percent on year-on-year basis in February 2017 as compared to 3.7 percent in the previous month and 4.0 percent in the corresponding month of last year.
2. CPI inflation on month-on-month basis is recorded at 0.3 percent in February 2017 compared to 0.2 percent in the previous month and -0.3 percent during the corresponding month of last year. Seasonally adjusted month-on-month CPI inflation is recorded at 0.94 percent in February 2017 compared to 0.13 percent in the previous month.
3. Core inflation (trimmed) on year-on-year basis is recorded at 4.1 percent in February 2017 as compared to 3.8 percent in the previous month and 3.6 percent during corresponding month of last year.
4. On month-on-month basis, the Core inflation (trimmed) is 0.2 percent in February 2017 as compared to 0.6 percent in the previous and 0.1 percent during corresponding month of last year.
5. Non-food, non-energy inflation measured by CPI Core (NFNE) on year-on-year basis is recorded at 5.3 percent in February 2017 compared to 5.4 percent in the previous month. It was 4.5 percent in the corresponding month of last year.
6. Core NFNE inflation on month-on-month basis recorded at 0.2 percent in February 2017 compared to 1.1 percent in the previous month. Core NFNE inflation was at level of current month in the corresponding month of last year.

7. WPI inflation on year-on-year basis increased to 5.3 percent in February 2017 as compared to 4.2 percent in the previous month. During February 2016, WPI inflation was recorded at 0.6 percent.
8. WPI inflation on month-on-month basis recorded at 0.5 percent in February 2017 as in the previous month and -0.6 percent in the corresponding month of last year.
9. SPI inflation on year-on-year basis recorded at 1.6 percent in February 2017 compared to 0.4 percent in the previous month. It was 4.2 percent in the corresponding month of last year.
10. SPI inflation on month-on-month basis recorded at 0.4 percent in February 2017 compared to -0.6 percent in the previous month and -0.8 percent during the corresponding month of last year.

1.1 A New Measure of Core Inflation

A new method of permanently excluding relatively volatile commodities from CPI basket in Pakistan has been developed by SBP. This is achieved by making use of trimming approach on past data on monthly CPI changes to isolate a Relatively Stable Component of CPI (RSC-CPI) as a new measure of core inflation. This method ensures inclusion of both food and non-food commodities that show persistent price behavior in Pakistan (see technical notes for details). Developments in core inflation measured by RSC- CPI for the month of February 2017 are described below:

- Core RSC inflation on year-on-year basis is recorded at 4.9 percent in February 2017 as in the previous month and 5.1 percent in the corresponding month of last year.

- Core RSC inflation on month-on-month basis is recorded at 0.2 percent in February 2017 compared to 0.9 percent in the previous month and was at level of current month during the corresponding month of last year.

Monthly CPI, WPI and SPI data is summarized in the following table.

Table 1.1 Inflation Trends (percent) (Base 2007- 08 = 100)																
Period	CPI Inflation						Core Inflation						WPI Inflation	SPI*** Inflation		
	General		Food		Non-food		NFNE*		Trimmed		RSC**					
	YoY	MoM	YoY	MoM	YoY	MoM	YoY	MoM	YoY	MoM	YoY	MoM	YoY	MoM	YoY	MoM
Feb-16	4.0	-0.3	3.7	-0.7	4.2	0.0	4.5	0.2	3.6	0.1	5.1	0.2	0.6	-0.6	4.2	-0.8
Mar-16	3.9	0.1	3.7	0.5	4.1	-0.1	4.7	0.2	3.8	0.2	5.1	0.1	0.2	-0.4	3.9	-0.3
Apr-16	4.2	1.5	4.7	2.4	3.8	1.0	4.4	1.1	3.8	0.6	5.0	0.9	0.6	1.3	3.6	0.3
May-16	3.2	-0.2	2.1	-0.7	3.9	0.2	4.5	0.2	3.6	0.2	5.1	0.3	0.0	0.6	1.4	-0.7
Jun-16	3.2	0.6	2.3	1.4	3.8	0.1	4.6	0.1	3.7	0.2	4.8	0.4	0.2	1.4	1.1	1.0
Jul-16	4.1	1.3	4.7	2.5	3.7	0.5	4.5	0.6	3.6	0.5	4.8	0.6	3.0	2.3	1.7	1.0
Aug-16	3.6	-0.3	3.4	-0.9	3.7	0.2	4.6	0.2	3.5	0.1	4.8	0.2	3.5	0.0	2.0	-0.1
Sep-16	3.9	0.2	4.0	0.1	3.8	0.2	4.8	0.3	3.7	0.1	4.7	0.2	3.4	-0.5	1.6	0.0
Oct-16	4.2	0.8	4.4	0.8	4.1	0.8	5.1	0.9	3.8	0.6	4.9	0.7	2.8	0.0	1.4	0.7
Nov-16	3.8	0.2	3.3	0.2	4.1	0.2	5.3	0.2	3.8	0.2	5.0	0.2	2.6	-0.2	0.6	0.3
Dec-16	3.7	-0.7	3.0	-1.9	4.2	0.2	5.2	0.1	3.7	0.1	4.7	0.2	3.1	-0.1	0.5	-0.4
Jan-17	3.7	0.2	2.6	-1.0	4.4	1.0	5.4	1.1	3.8	0.6	4.9	0.9	4.2	0.5	0.4	-0.6
Feb-17	4.2	0.3	3.7	0.3	4.6	0.3	5.3	0.2	4.1	0.2	4.9	0.2	5.3	0.5	1.6	0.4
* NFNE is Non-food non-energy ** Relatively Stable Component of CPI *** SPI for all income groups combined																

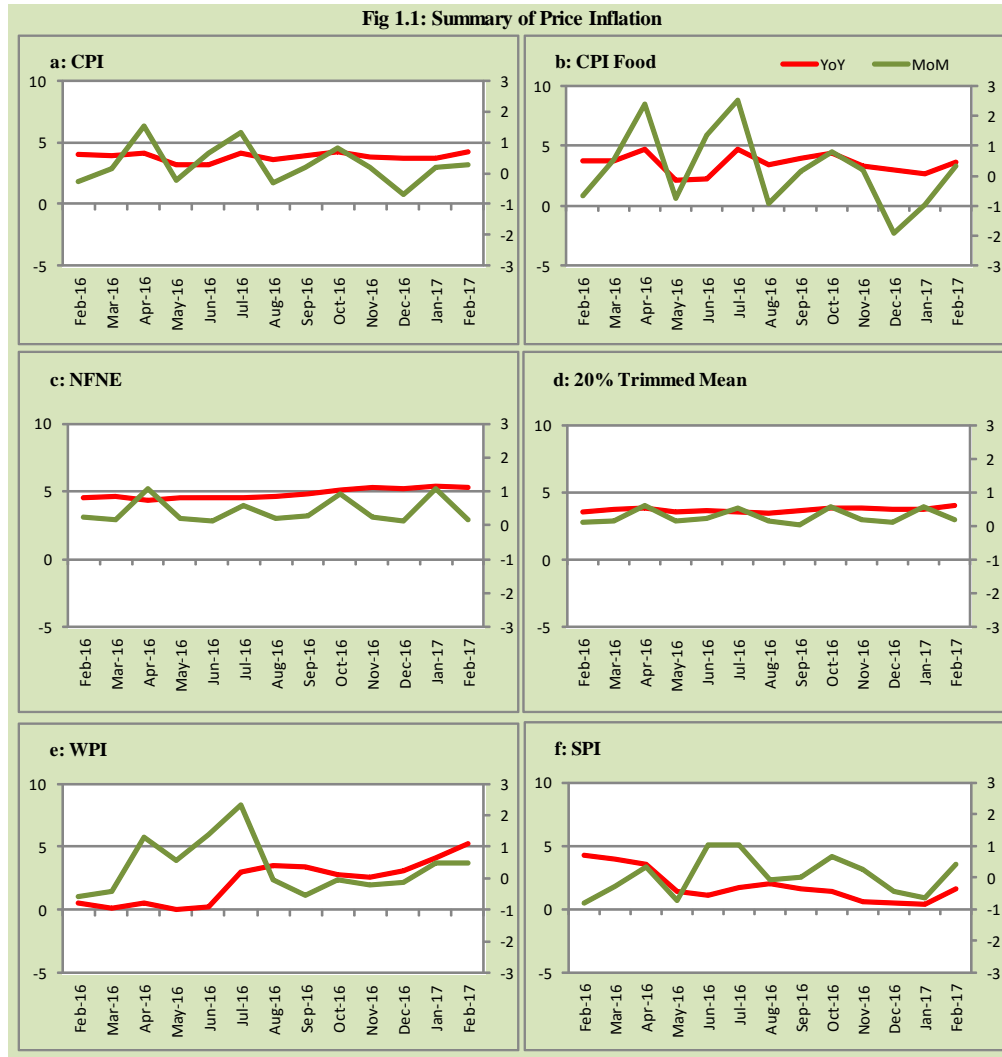


Fig 1.2: Movements in Price Indices (percent)

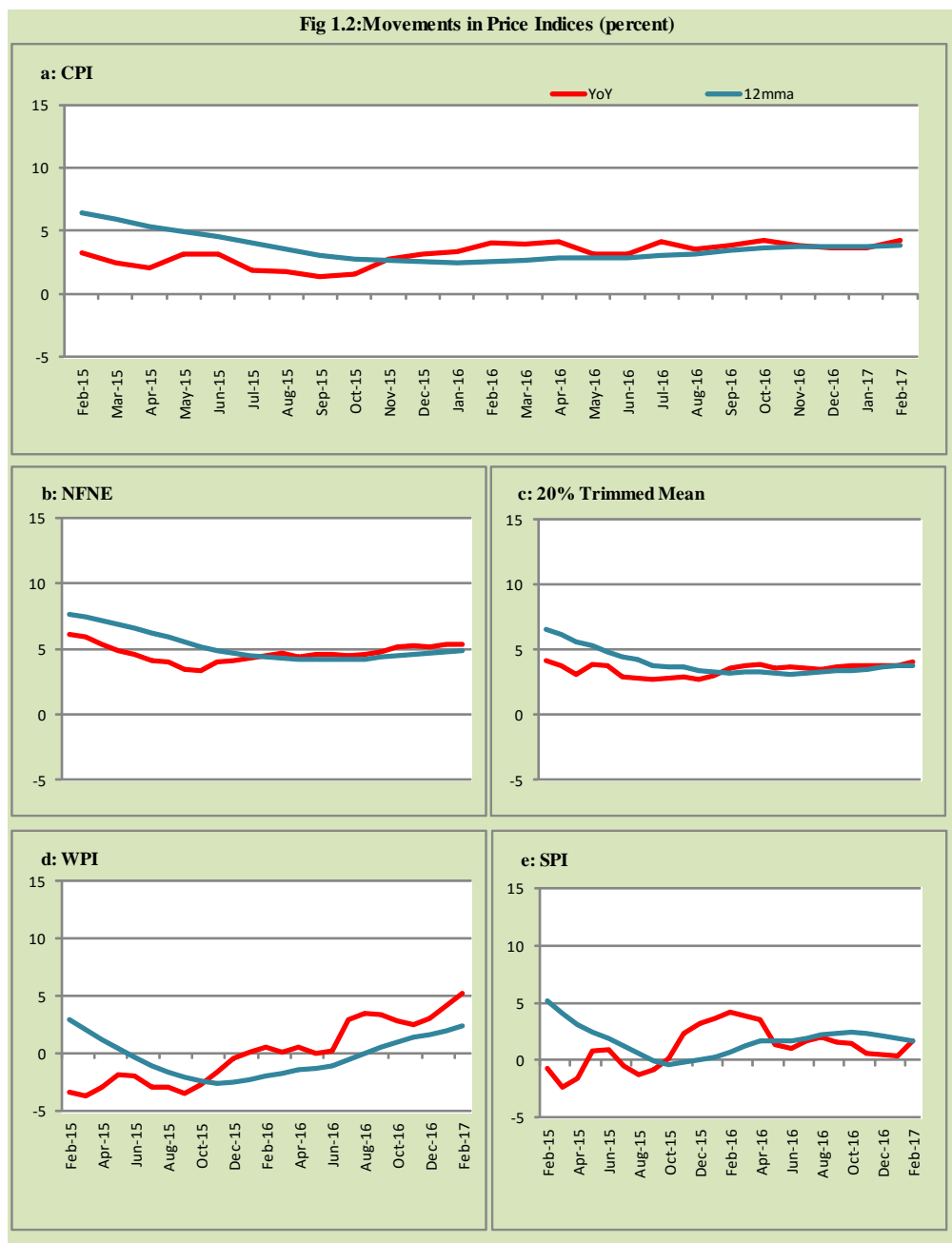


Fig 1.3: Movements in Price Indices -MoM (percent)

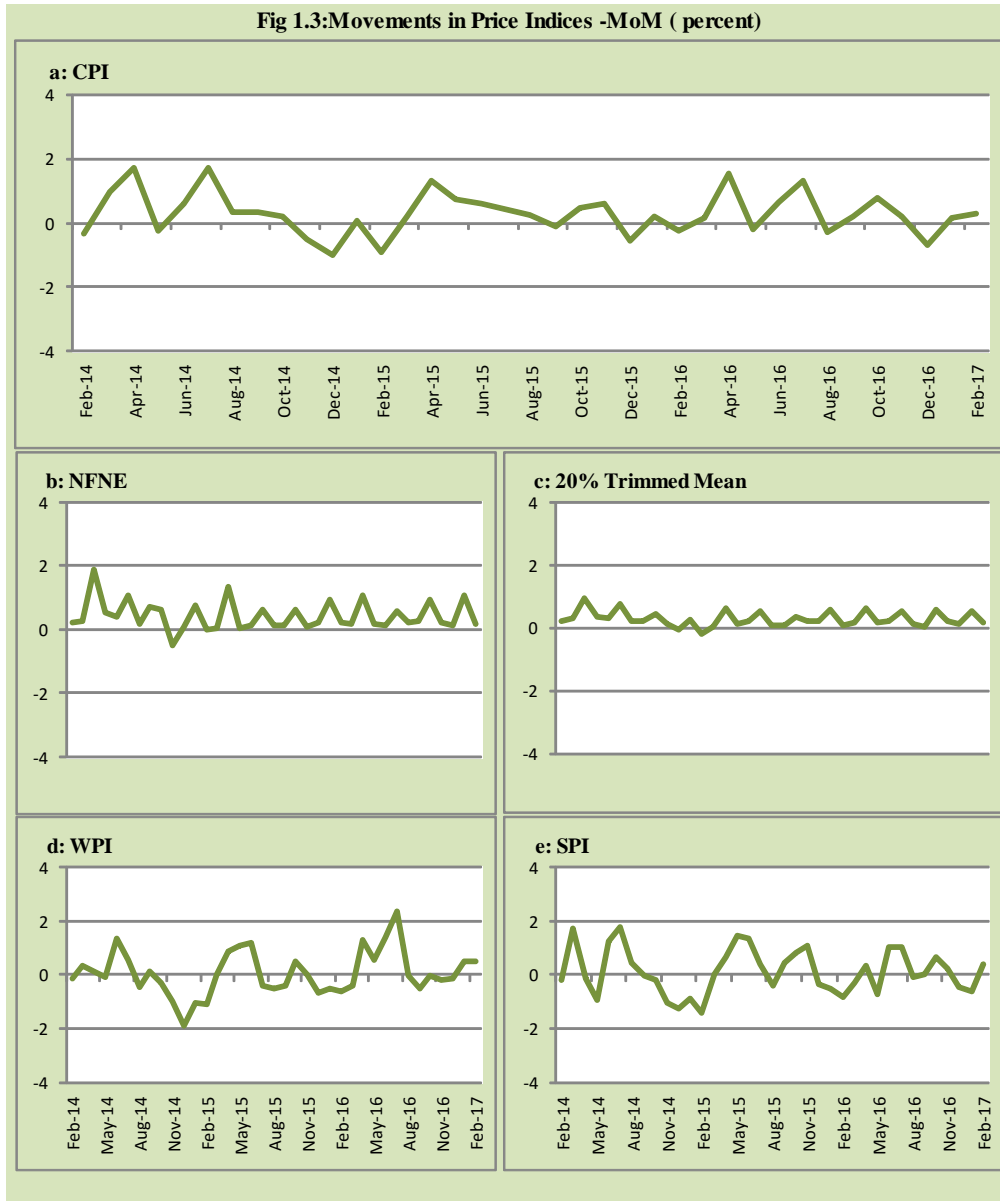
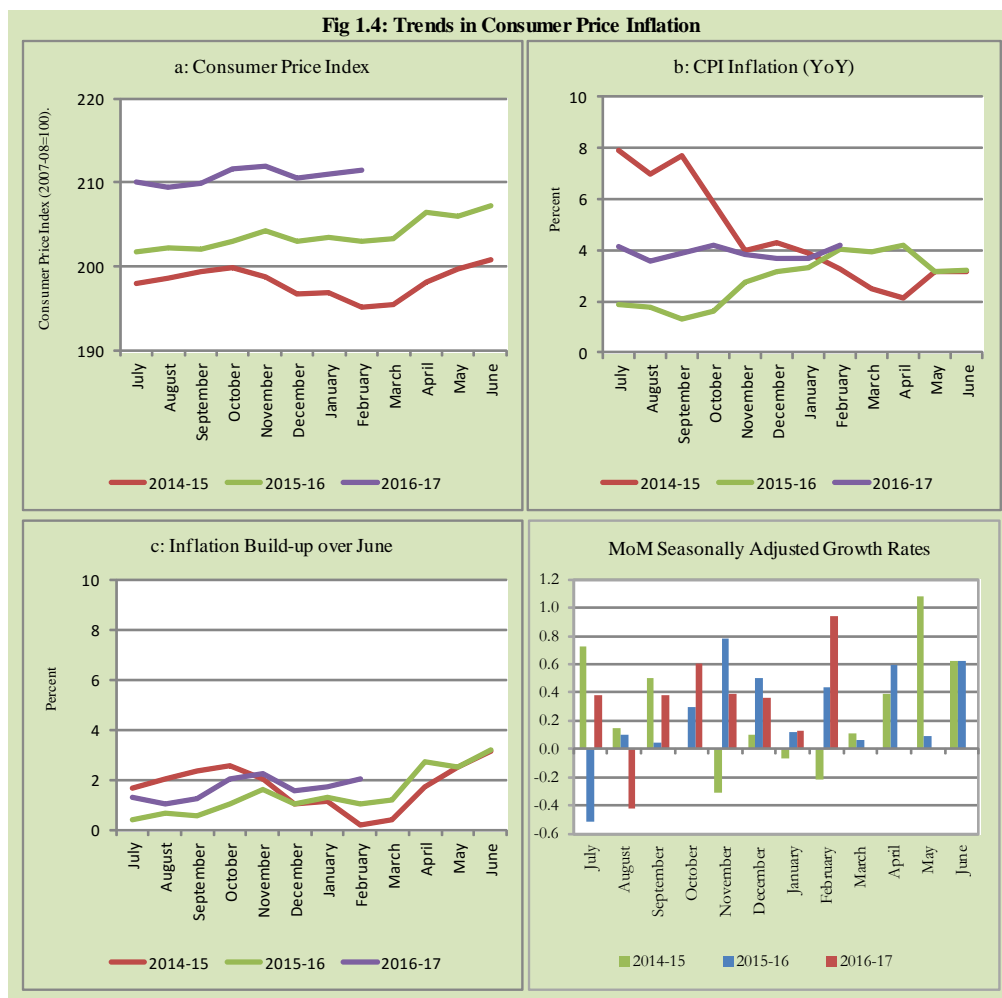


Fig 1.4: Trends in Consumer Price Inflation



2. City wise Inflation

CPI Inflation on year-on-year basis in federal and provincial capitals of Pakistan remained lower than overall inflation during February 2017 except Islamabad. Among these five cities, the lowest inflation was observed in Peshawar and Quetta at 2.2 percent while the highest inflation was observed in Islamabad at 5.1 percent (Table A6 of annexure-A).

Table 2.1 City-wise Inflation of Selected Cities (percent)						
	Feb-16		Jan-17		Feb-17	
	MoM	YoY	MoM	YoY	MoM	YoY
Overall CPI	-0.3	4.0	0.2	3.7	0.3	4.2
Islamabad	-0.1	3.2	0.1	4.4	0.7	5.1
Karachi	-0.2	5.8	0.2	3.0	0.1	3.3
Lahore	-0.3	2.4	0.9	3.0	0.3	3.6
Peshawar	-0.4	4.2	0.5	1.4	0.4	2.2
Quetta	-0.5	4.2	-0.1	2.1	-0.3	2.2

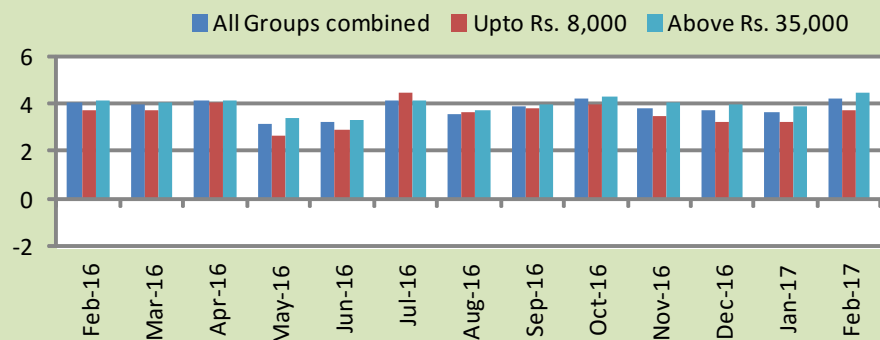
3. Income Group wise Inflation

Income group- wise data shows that income group above Rs. 35,000 witnessed higher inflation as compared to other quintiles during February 2017 in General and Food groups. The lowest income group (Up to Rs. 8, 000) observed lowest inflation in general and food groups among income groups during the month of February 2017 (Table A7 of annexure-A).

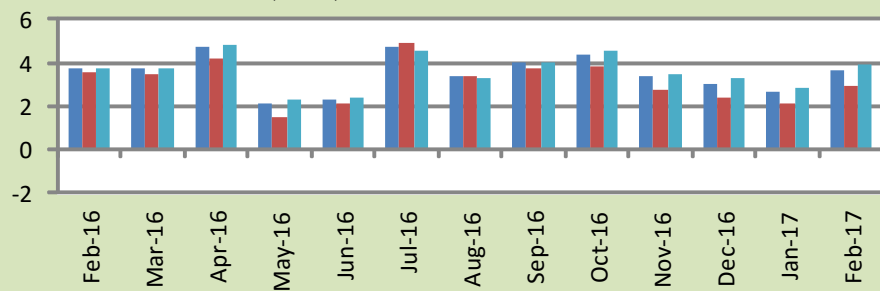
Table 3.1 Income Group- wise Inflation (YoY) (percent)									
Income Groups	General			Food			Non-food		
	Feb-16	Jan-17	Feb-17	Feb-16	Jan-17	Feb-17	Feb-16	Jan-17	Feb-17
All Groups Combined	4.0	3.7	4.2	3.7	2.6	3.7	4.2	4.4	4.6
Up to Rs. 8,000	3.8	3.3	3.7	3.6	2.1	2.9	4.0	4.7	4.7
Rs. 8,001- 12,000	4.1	3.3	3.9	3.6	2.3	3.2	4.6	4.4	4.5
Rs. 12,001- 18,000	3.5	3.4	4.0	3.7	2.5	3.5	3.4	4.3	4.4
Rs. 18,001- 35,000	4.3	3.5	4.1	3.9	2.7	3.8	4.6	4.1	4.4
Above Rs. 35,000	4.1	3.9	4.4	3.7	2.8	4.0	4.3	4.5	4.7

Fig 3.1: Income Group- wise Inflation

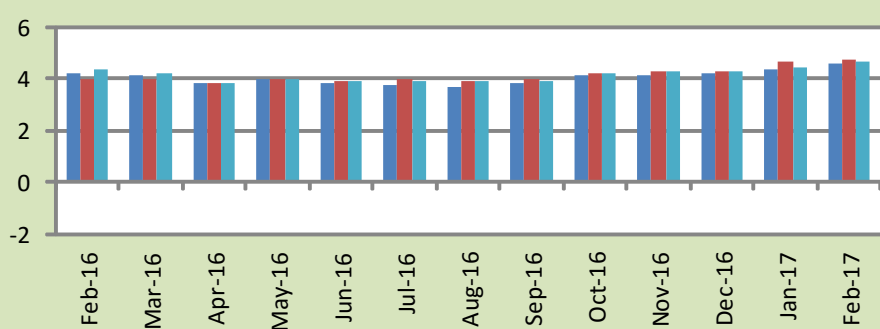
a: CPI Overall Inflation (YoY)



b: CPI Food Inflation (YoY)



c: CPI Non-Food Inflation (YoY)



4. Weighted Contribution

The weighted contribution of food group in the overall inflation increased to 35.54 percent during February 2017 from 29.56 percent in previous month. It was 37.82 percent in February 2016.

The weighted contribution of non-food group decreased to 64.46 percent in February 2017 from 70.44 percent in previous month.

Table 4.1 Weighted Contribution to CPI Inflation (YoY)						
Period	Food	Clothing & Footwear	Housing, Water, Elect, Gas & Other Fuel	Transport	Education	Others
Feb-16	37.82	10.11	33.65	-1.23	8.91	10.74
Mar-16	38.91	11.14	34.22	-6.44	9.46	12.72
Apr-16	46.55	9.80	33.26	-6.42	5.87	10.94
May-16	27.39	12.83	43.54	-8.54	9.36	15.42
Jun-16	29.90	12.73	43.18	-10.39	9.49	15.09
Jul-16	47.51	9.16	32.21	-7.65	7.07	11.70
Aug-16	39.62	10.36	35.09	-7.91	8.72	14.13
Sep-16	42.70	9.45	29.26	-4.86	10.72	12.72
Oct-16	43.11	8.24	30.79	-4.55	10.57	11.84
Nov-16	36.64	9.16	33.91	-5.95	12.22	14.02
Dec-16	33.90	9.91	35.29	-5.45	12.65	13.70
Jan-17	29.56	9.82	35.77	-4.98	12.73	17.10
Feb-17	35.54	8.29	30.79	0.59	10.97	13.82

5. Inflation Diffusion Index

Table 5.1 Inflation Diffusion Index - based on MoM change

	Feb-16	Mar-16	Apr-16	May-16	Jun-16	Jul-16	Aug-16	Sep-16	Oct-16	Nov-16	Dec-16	Jan-17	Feb-17
General	26.2	30.7	29.4	32.0	23.7	32.7	39.7	10.3	30.1	41.1	33.5	32.3	38.0
Food & Non-Alcoholic Beverages	22.1	5.3	27.5	20.2	32.7	51.8	34.2	6.1	20.0	28.2	17.9	10.5	35.1
Alcoholic Beverages & Tobacco	100.0	83.3	66.7	100.0	100.0	100.0	33.3	-16.7	-16.7	100.0	83.3	66.7	100.0
Clothing & Footwear	59.3	55.9	22.0	59.3	37.3	42.4	37.3	5.1	54.2	57.6	66.1	45.8	27.1
Housing, Water, Elect, Gas & other Fuels	0.0	-2.8	41.7	13.9	33.3	52.8	22.2	5.6	25.0	41.7	38.9	41.7	22.2
Furnishing & Household Equip. Maintenance etc	39.1	62.3	42.0	52.2	8.7	20.3	60.9	11.6	46.4	53.6	47.8	49.3	62.3
Health	17.9	25.6	33.3	25.6	25.6	20.5	46.2	33.3	43.6	46.2	46.2	17.9	33.3
Transport	-23.3	-7.0	7.0	-2.3	-7.0	4.7	27.9	9.3	2.3	7.0	0.0	30.2	30.2
Communication	-33.3	41.7	8.3	8.3	25.0	25.0	16.7	8.3	33.3	50.0	25.0	16.7	25.0
Recreation & Culture	17.9	30.8	5.1	7.7	-17.9	-2.6	7.7	10.3	-7.7	25.6	23.1	15.4	30.8
Education	31.3	50.0	68.8	50.0	31.3	-6.3	50.0	37.5	37.5	43.8	0.0	18.8	6.3
Restaurant & Hotels	100.0	100.0	33.3	66.7	50.0	66.7	83.3	50.0	33.3	33.3	50.0	50.0	66.7
Miscellaneous	57.1	60.0	42.9	60.0	51.4	48.6	77.1	-2.9	60.0	71.4	40.0	77.1	60.0
NFNE	26.6	38.5	29.3	34.6	19.8	24.9	42.3	11.5	34.6	45.6	37.6	39.1	37.6

See annexure B (Technical Notes) for the definition of Inflation Diffusion Index.

6. Domestic Commodity Prices

Table 6.1 Inflation in Domestic CPI Food Commodities (percent)

Sr. No	Item	Unit	Feb-16		Jan-17		Feb-17	
			YoY	MoM	YoY	MoM	YoY	MoM
1	Wheat	10 Kg	0.77	0.75	-0.41	0.59	-0.64	0.52
2	Wheat Flour Bag	10 Kg	-1.22	-0.63	-2.36	-0.12	-1.87	-0.14
3	Rice Basmati Sup. Qlty.	Kg	-12.27	1.06	2.92	0.63	4.34	2.46
4	Pulse Masoor (Washed)	Kg	5.36	-0.93	-1.82	-2.44	-5.04	-4.18
5	Pulse Moong (Washed)	Kg	-4.34	-1.06	-13.37	-3.69	-14.57	-2.42
6	Pulse Mash (Washed)	Kg	52.80	0.73	-10.86	-3.78	-16.96	-6.16
7	Pulse Gram	Kg	49.68	-1.51	34.04	-2.08	19.17	-12.44
8	Vegetable Ghee (Loose)	Kg	-8.78	0.52	6.86	1.22	6.93	0.58
9	Sugar Refined	Kg	14.68	4.33	8.51	3.10	1.44	-2.47
10	Milk Fresh (Unboiled)	Ltr	4.01	0.08	3.51	0.12	3.60	0.16
11	Tea- Tapal Danedar	200 Gm	37.70	0.16	-8.51	0.00	-7.49	1.28
12	Beef With Bone Av. Qlty.	Kg	5.69	0.64	2.81	0.13	2.39	0.23
13	Mutton Av. Qlty.	Kg	6.81	0.23	4.50	0.57	4.71	0.43
14	Chicken Farm Broiler (Live)	Kg	-10.98	-19.58	-16.97	-2.38	11.40	7.91
15	Eggs Farm	Doz	-1.37	-1.55	22.21	-2.68	13.29	-8.74
16	Potatoes	Kg	-24.70	-11.84	18.98	-29.65	31.91	-2.26
17	Onion	Kg	76.92	-7.55	-39.07	0.68	-29.93	6.31
18	Tomatoes	Kg	-32.96	-7.07	-20.62	-39.98	10.17	28.98
19	Ginger	Kg	-15.01	-6.19	-7.90	-8.94	-3.11	-1.31
20	Garlic	Kg	59.63	3.08	34.74	-0.64	32.43	1.32

7. Global Commodity Prices

Table 7.1 Changes in Major Global Indices (percent)

Item/ Group	Feb-16		Jan-17		Feb-17	
	YoY	MoM	YoY	MoM	YoY	MoM
Overall	-30.5	0.9	40.6	2.3	41.3	1.5
Food	-8.4	0.8	13.6	4.8	12.4	-0.3
Metals	-20.9	4.7	37.5	1.8	38.2	5.2
Energy	-42.7	2.4	67.7	1.6	66.0	1.4
Agricultural Raw Material	-22.9	-9.1	8.0	1.8	21.4	2.2
Cotton	-4.7	-3.2	19.8	3.6	27.9	3.4

Source: IMF

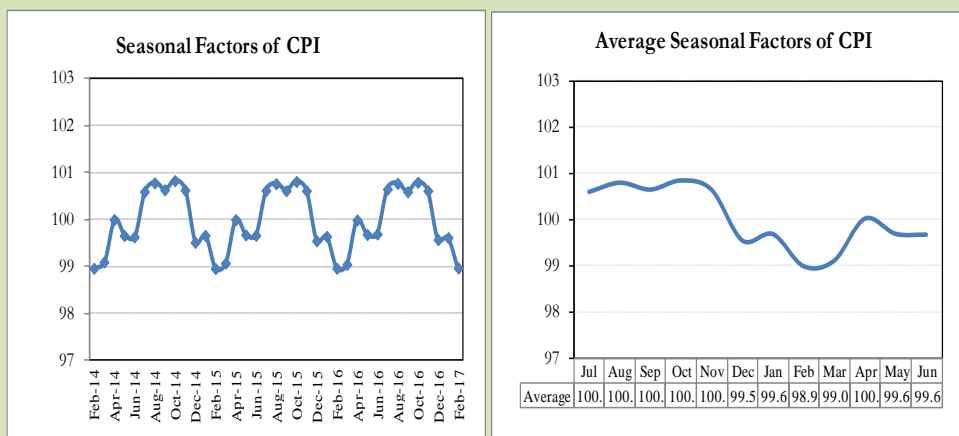
8. Seasonal Adjustment in CPI

Seasonal adjustment is the process of estimating and removing the seasonal effects from a time series after decomposing it into seasonal, trend, cycle and irregular components. The purpose is to identify the different components of the time series and thus provide a better understanding of its underlying behavior. Seasonally adjusted changes are usually preferred for analyzing general price trends in the economy because they eliminate the effect of changes that normally occur at the same time and in about the same magnitude every year. Various statistical methods can be used to decompose a time series into its constituent components. The State Bank of Pakistan uses X-12- ARIMA Seasonal Adjustment Method for this purpose.

The changes in consumer prices are normally reported in terms of year-on-year and month-on-month basis. Seasonal adjustment is particularly useful for analyzing month-on-month changes. The monthly data series of Consumer Price Index (CPI) from July 2008 to February 2017 has been used for seasonal adjustment analysis. The seasonal analysis is carried out without taking trading-day or Islamic calendar month's effects.

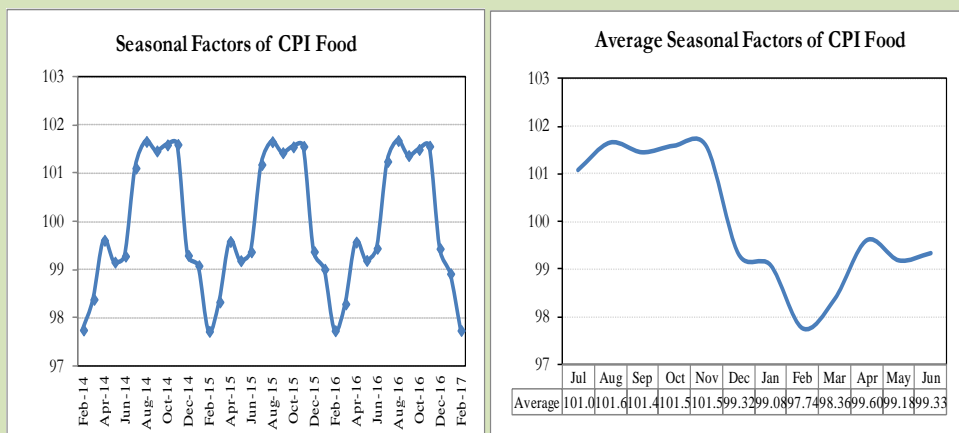
Figure 8.1 reveals that seasonality in CPI has been increasing over the period of last four years. Average seasonal factors reveal strong seasonality during the calendar year. There is an upward seasonality during the months from July to November and downward seasonality in the remaining months of the year. Upward and downward seasonality is above and below the trend line respectively. It is important to note that seasonal factors are estimates based on present and past experience and that future data may not necessarily show the same pattern of seasonal factors.

Fig. 8.1 Seasonal Factors of CPI



Note: Data Available in Annex Table 16.

Fig. 8.2 Seasonal Factors of CPI Food



Note: Data Available in Annex Table 17.

Figures 8.3 & 8.4 show that seasonally adjusted series are relatively smoother than the original series due to the removal of the seasonal variations. The trend follows the long-term movement in original series, and is smoother than the original series because some irregular fluctuations have been removed.

Fig. 8.3 Seasonal Plots of CPI

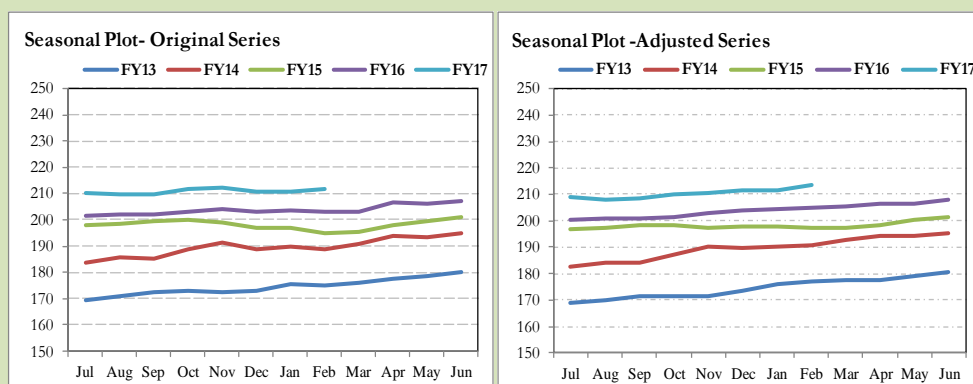
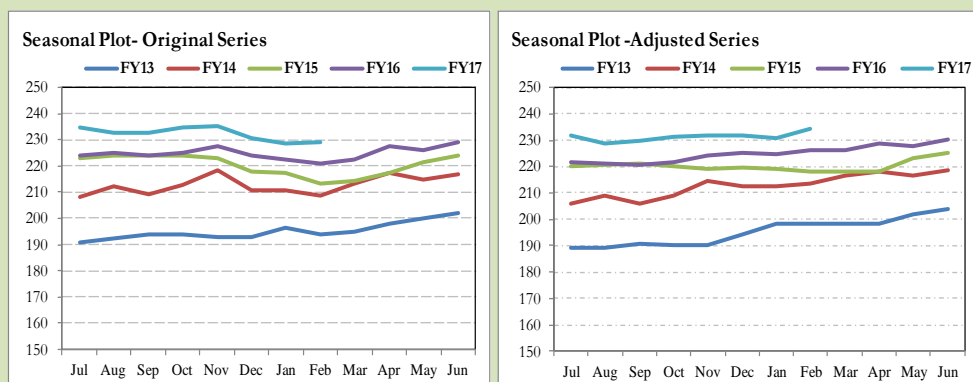


Fig. 8.4 Seasonal Plots of CPI (Food)



Seasonally adjusted CPI for February 2017 stood at 213.74 against 211.54 in original series showing increase of 2.20 on account of adjustment of downward seasonality in February 2017.

Seasonally adjusted CPI food group for February 2017 stood at 234.49 against 229.19 in original series showing increase of 5.30 on account of adjustment of downward seasonality in February 2017.

Month-on-month change of seasonally adjusted CPI series stood at 0.94% reflecting increase during February 2017 over previous month and an increase of 0.28% in original series.

Month-on-month change of seasonally adjusted CPI food group series stood at 1.53% reflecting increase during February 2017 over previous month and an increase of 0.32% in original series.

It is important to note that inflation rates should be analyzed on the basis of seasonally adjusted rates. This is especially needed for inflation rates on month-on-month basis. The most recent annual rate of inflation is usually indicated by annualizing the seasonally adjusted month-on-month rate. Annualized rate of CPI inflation in February 2017 (corresponding to the seasonally adjusted month-on-month rate) is 11.89 percent.

Fig. 8.5 Month-on-Month Percent Changes in CPI

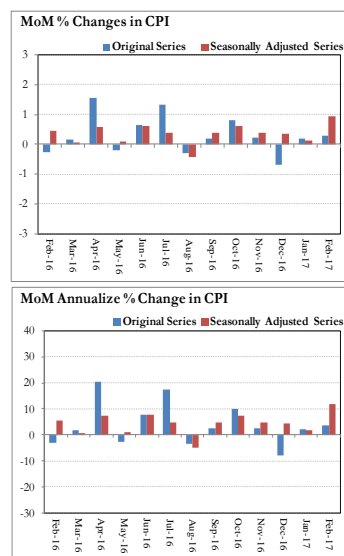
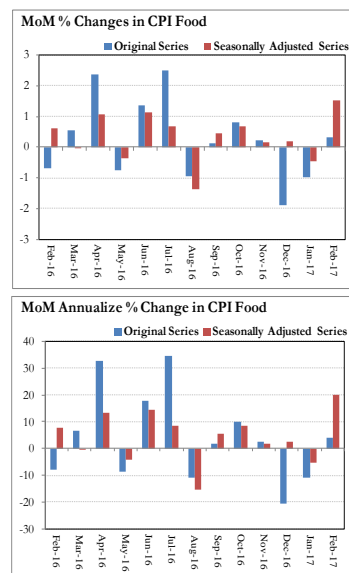


Fig. 8.6 Month-on-Month Percent Changes in CPI Food



Annexure A

Table A1: CPI Inflation by Groups (percent)							
	Weight	MoM change			YoY change		
		Feb-16	Jan-17	Feb-17	Feb-16	Jan-17	Feb-17
I. Food Group	37.5	-0.7	-1.0	0.3	3.7	2.6	3.7
Food & Non-Alcoholic Beverages	34.8	-0.8	-1.2	0.3	2.5	2.0	3.1
Alcoholic Beverages & Tobacco	1.4	0.1	1.2	0.4	26.6	12.1	12.4
Restaurant & Hotels	1.2	0.9	0.3	0.3	5.3	4.6	3.9
II. Non-Food Group	62.5	0.0	1.0	0.3	4.2	4.4	4.6
Clothing & Footwear	7.6	0.3	0.2	0.1	4.9	4.3	4.2
Housing, Water, Elect, Gas & other Fuels	29.4	0.1	1.4	0.0	5.1	4.9	4.8
Furnishing & Household Equip. Maintenance etc	4.2	0.7	0.1	0.2	4.3	3.1	2.5
Health	2.2	1.5	6.4	0.8	4.0	14.9	14.1
Transport	7.2	-2.2	0.5	1.1	-0.8	-2.9	0.4
Communication	3.2	0.0	0.0	0.0	0.2	0.7	0.8
Recreation & Culture	2.0	0.3	0.1	0.1	2.5	1.5	1.3
Education	3.9	0.4	0.0	0.2	9.2	11.5	11.3
Miscellaneous	2.8	1.2	0.3	1.0	3.3	4.9	4.7
Headline	100.0	-0.3	0.2	0.3	4.0	3.7	4.2

Table A2: Distribution of Price changes (YoY) of CPI basket											
Groups	% changes	No. of items in each inflation range									
		Total number of items		Decrease or no change (0% or less)		Subdued increase (>0% but <5%)		Moderate increase (5% but less than 10%)		Double digit increase (10% or more)	
		Feb-16	Feb-17	Feb-16	Feb-17	Feb-16	Feb-17	Feb-16	Feb-17	Feb-16	Feb-17
I. Food Group	3.7	124	125	40	25	45	57	18	20	21	23
Food & Non-Alcoholic Beverages	3.1	112	113	40	25	43	54	14	14	15	20
Alcoholic Beverages & Tobacco	12.4	6	6	0	0	0	0	0	3	6	3
Restaurant & Hotels	3.9	6	6	0	0	2	3	4	3	0	0
II. Non-Food Group	4.6	348	348	96	85	156	163	78	81	18	19
Clothing & Footwear	4.2	59	59	7	7	22	34	29	17	1	1
Housing, Water, Elect, Gas & other Fuels	4.8	36	36	5	12	11	10	17	13	3	1
Furnishing & Household Equip. Maintenance etc	2.5	69	69	2	9	53	48	13	12	1	0
Health	14.1	39	39	20	6	13	17	4	8	2	8
Transport	0.4	43	43	29	25	11	13	3	5	0	0
Communication	0.8	12	12	5	3	6	4	0	4	1	1
Recreation & Culture	1.3	39	39	16	19	16	15	4	3	3	2
Education	11.3	16	16	6	1	6	4	0	7	4	4
Miscellaneous	4.7	35	35	6	3	18	18	8	12	3	2
Overall	4.2	472	473	136	110	201	220	96	101	39	42

Note: Prices of 14 seasonal items were not reported during the month.

Table A3: Top and Bottom 15 Contributors to CPI Inflation (YoY) in February 2017					
Top 15 Contributors		YoY Change		Weighted Contribution	
Items/ Contributors	Weights	Feb-16	Feb-17		
Ranked by Weighted Contribution					
1	House Rent	21.81	5.46	6.62	29.41
2	Education	3.94	9.22	11.33	10.97
3	Milk Fresh	6.68	3.88	3.49	7.06
4	Cigarettes	1.39	26.80	12.51	6.89
5	Fresh Vegetables	1.66	0.79	16.21	5.98
6	Drug Medicine	1.27	2.15	21.32	4.77
7	Fresh Fruits	1.86	2.60	10.19	4.54
8	Chicken	1.36	-10.98	11.40	2.69
9	Meat	2.43	6.07	3.18	2.35
10	Potatoes	0.48	-24.69	31.90	2.20
11	Tailoring	0.88	8.93	7.10	2.13
12	Rice	1.58	-14.16	7.28	2.11
13	Cotton Cloth	1.73	4.22	4.58	2.00
14	Personal Care	1.49	3.32	4.43	1.64
15	Personal Equipments	0.84	3.00	5.88	1.61
Total		49.42			86.36
Bottom 15 Contributors					
1	Onion	0.54	76.92	-29.93	-4.69
2	Wheat Flour	4.16	0.00	-1.80	-1.90
3	Pulse Mash (Washed)	0.21	52.80	-16.96	-1.45
4	Tea	0.84	30.14	-4.43	-1.22
5	Pulse Moong	0.23	-4.34	-14.56	-1.19
6	Transport Services	2.70	-0.92	-1.22	-0.75
7	Pulse Masoor	0.27	5.96	-4.83	-0.31
8	Motor Vehicle Accessories	0.24	-4.02	-3.39	-0.21
9	Wheat	0.35	0.78	-0.64	-0.05
10	Spices	0.54	1.83	-0.13	-0.02
11	Beans	0.03	-1.50	-0.51	0.00
12	Motor Vehicle Tax	0.11	0.00	0.00	0.00
13	Electricity	4.40	2.84	0.00	0.00
14	Gas	1.58	9.92	0.00	0.00
15	Gur	0.02	5.29	0.06	0.00
Total		16.23			-11.81

Table A3.1: Top and Bottom 15 Contributors to CPI Inflation (MoM) in February 2017

<u>Top 15 Contributors</u>		<u>MoM Change</u>		Weighted Contribution	
Items/ Contributors	Weights	Jan-17	Feb-17		
Ranked by Weighted Contribution					
1	Chicken	1.36	-2.38	7.91	27.51
2	Motor Fuel	3.03	1.19	3.12	22.30
3	Tomatoes	0.45	-39.98	28.98	21.33
4	Fresh Fruits	1.86	3.81	2.62	17.87
5	Rice	1.58	1.03	3.53	15.11
6	Onion	0.54	0.68	6.31	9.30
7	Personal Equipments	0.84	0.33	1.34	5.47
8	Personal Care	1.49	0.30	1.00	5.45
9	Tea	0.84	0.86	1.40	5.22
10	Milk Fresh	6.68	0.12	0.16	4.68
11	Doctor (MBBS) Clinic Fee	0.59	0.38	1.60	4.27
12	Cigarettes	1.39	1.26	0.42	3.73
13	Education	3.94	0.00	0.24	3.61
14	Meat	2.43	0.28	0.30	3.20
15	Vegetable Ghee	2.07	0.77	0.44	2.14
Total		29.11			151.19
<u>Bottom 15 Contributors</u>					
1	Pulse Gram	0.24	-2.07	-12.44	-17.88
2	Eggs	0.46	-2.68	-8.74	-16.69
3	Sugar	1.04	3.10	-2.47	-10.01
4	Besan	0.15	-2.38	-9.31	-7.97
5	Pulse Mash (Washed)	0.21	-3.78	-6.17	-6.65
6	Gram Whole	0.16	-1.37	-5.92	-5.00
7	Pulse Masoor	0.27	-2.53	-4.25	-3.86
8	Potatoes	0.48	-29.65	-2.26	-2.99
9	Pulse Moong	0.23	-3.69	-2.42	-2.48
10	Wheat Flour	4.16	-0.04	-0.06	-0.83
11	Woolen Readymade Garments	0.40	1.07	-0.16	-0.28
12	Wheat Product	0.10	-0.02	-0.33	-0.12
13	Dry Fruits	0.25	0.05	-0.07	-0.08
14	Kerosene Oil	0.01	-0.08	0.00	0.00
15	Motor Vehicle Tax	0.11	0.00	0.00	0.00
Total		8.27			-74.85

Table A3.2: Top Fifteen Contributors to CPI Inflation (YoY) in February 2017					
Items/ Contributors		Weights	YoY Change		Weighted Contribution
			Feb-16	Feb-17	
A. Ranked by Percentage Change					
1	Gram Whole	0.16	23.37	32.36	1.36
2	Potatoes	0.48	-24.69	31.90	2.20
3	Drug Medicine	1.27	2.15	21.32	4.77
4	Besan	0.15	44.71	20.08	0.91
5	Pulse Gram	0.24	49.68	19.17	1.42
6	Fresh Vegetables	1.66	0.79	16.21	5.98
7	Eggs	0.46	-1.37	13.28	1.43
8	Cigarettes	1.39	26.80	12.51	6.89
9	Chicken	1.36	-10.98	11.40	2.69
10	Education	3.94	9.22	11.33	10.97
11	Medical Equipments	0.01	1.95	10.22	0.02
12	Fresh Fruits	1.86	2.60	10.19	4.54
13	Tomatoes	0.45	-32.96	10.17	0.61
14	Doctor (MBBS) Clinic Fee	0.59	6.29	8.77	1.53
15	Rice	1.58	-14.16	7.28	2.11
Total		15.59			47.45
B. Ranked by Weights					
1	House Rent	21.81	5.46	6.62	29.41
2	Milk Fresh	6.68	3.88	3.49	7.06
3	Electricity	4.40	2.84	0.00	0.00
4	Wheat Flour	4.16	0.00	-1.80	-1.90
5	Education	3.94	9.22	11.33	10.97
6	Communication & Apparatus	3.15	0.10	0.63	0.30
7	Motor Fuel	3.03	-1.81	1.29	0.66
8	Transport Services	2.70	-0.92	-1.22	-0.75
9	Meat	2.43	6.07	3.18	2.35
10	Vegetable Ghee	2.07	-9.18	4.09	1.35
11	Fresh Fruits	1.86	2.60	10.19	4.54
12	Cooking Oil	1.75	-13.84	2.89	0.78
13	Cotton Cloth	1.73	4.22	4.58	2.00
14	Fresh Vegetables	1.66	0.79	16.21	5.98
15	Rice	1.58	-14.16	7.28	2.11
Total		62.97			64.85
Note: Weighted contribution is estimated by multiplying the weights by the price change of an item; this is then reported as a share in YoY change in CPI, which is 4.2 percent in February, 2017.					

Table A3.3: Top Ten Contributors to CPI Food Inflation (YoY) in February 2017

Table 1: Top 10 Contributors to CPI Food Inflation (2017) in February 2017					
Items/ Contributors		Weights	YoY Change		Weighted Contribution
			Feb-16	Feb-17	
A. Ranked by Weighted Contribution					
1	Milk Fresh	6.68	3.88	3.49	7.06
2	Cigarettes	1.39	26.80	12.51	6.89
3	Fresh Vegetables	1.66	0.79	16.21	5.98
4	Fresh Fruits	1.86	2.60	10.19	4.54
5	Chicken	1.36	-10.98	11.40	2.69
6	Meat	2.43	6.07	3.18	2.35
7	Potatoes	0.48	-24.69	31.90	2.20
8	Rice	1.58	-14.16	7.28	2.11
9	Ready Made Food	1.23	5.35	3.95	1.47
10	Eggs	0.46	-1.37	13.28	1.43
Total		19.13			36.73
B. Ranked by Percentage Change					
1	Gram Whole	0.16	23.37	32.36	1.36
2	Potatoes	0.48	-24.69	31.90	2.20
3	Besan	0.15	44.71	20.08	0.91
4	Pulse Gram	0.24	49.68	19.17	1.42
5	Fresh Vegetables	1.66	0.79	16.21	5.98
6	Eggs	0.46	-1.37	13.28	1.43
7	Cigarettes	1.39	26.80	12.51	6.89
8	Chicken	1.36	-10.98	11.40	2.69
9	Fresh Fruits	1.86	2.60	10.19	4.54
10	Tomatoes	0.45	-32.96	10.17	0.61
Total		8.20			28.05
C. Ranked by Weights					
1	Milk Fresh	6.68	3.88	3.49	7.06
2	Wheat Flour	4.16	0.00	-1.80	-1.90
3	Meat	2.43	6.07	3.18	2.35
4	Vegetable Ghee	2.07	-9.18	4.09	1.35
5	Fresh Fruits	1.86	2.60	10.19	4.54
6	Cooking Oil	1.75	-13.84	2.89	0.78
7	Fresh Vegetables	1.66	0.79	16.21	5.98
8	Rice	1.58	-14.16	7.28	2.11
9	Cigarettes	1.39	26.80	12.51	6.89
10	Chicken	1.36	-10.98	11.40	2.69
Total		24.95			31.86
Note: Weighted contribution is estimated by multiplying the weights by the price change of an item; this is then reported as a share in YoY change in CPI Food, which is 3.7 percent in February, 2017.					

Table A3.4: Top Ten Contributors to CPI Non-food Inflation (YoY) in February 2017					
Items/ Contributors		Weights	YoY Change		Weighted Contribution
			Feb-16	Feb-17	
A. Ranked by Weighted Contribution					
1	House Rent	21.81	5.46	6.62	29.41
2	Education	3.94	9.22	11.33	10.97
3	Drug Medicine	1.27	2.15	21.32	4.77
4	Tailoring	0.88	8.93	7.10	2.13
5	Cotton Cloth	1.73	4.22	4.58	2.00
6	Personal Care	1.49	3.32	4.43	1.64
7	Personal Equipments	0.84	3.00	5.88	1.61
8	Doctor (MBBS) Clinic Fee	0.59	6.29	8.77	1.53
9	Woolen Cloth	0.88	3.25	5.87	1.45
10	Ready Made Garments	0.97	7.65	4.26	1.11
Total		34.42			56.63
B. Ranked by Percentage Change					
1	Drug Medicine	1.27	2.15	21.32	4.77
2	Education	3.94	9.22	11.33	10.97
3	Medical Equipments	0.01	1.95	10.22	0.02
4	Doctor (MBBS) Clinic Fee	0.59	6.29	8.77	1.53
5	Tailoring	0.88	8.93	7.10	2.13
6	House Rent	21.81	5.46	6.62	29.41
7	Personal Equipments	0.84	3.00	5.88	1.61
8	Woolen Cloth	0.88	3.25	5.87	1.45
9	Kerosene Oil	0.01	-8.85	4.99	0.01
10	Construction Wage Rate	0.33	7.82	4.68	0.41
Total		30.57			52.31
C. Ranked by Weights					
1	House Rent	21.81	5.46	6.62	29.41
2	Electricity	4.40	2.84	0.00	0.00
3	Education	3.94	9.22	11.33	10.97
4	Communication & Apparatus	3.15	0.10	0.63	0.30
5	Motor Fuel	3.03	-1.81	1.29	0.66
6	Transport Services	2.70	-0.92	-1.22	-0.75
7	Cotton Cloth	1.73	4.22	4.58	2.00
8	Gas	1.58	9.92	0.00	0.00
9	Footwear	1.55	0.63	0.89	0.27
10	Personal Care	1.49	3.32	4.43	1.64
Total		45.39			44.49
Note: Weighted contribution is estimated by multiplying the weights by the price change of an item; this is then reported as a share in YoY change in CPI Non-food, which is 4.6 percent in February, 2017.					

Table A4: Distribution of Price Changes (YoY) - Selected CPI Items: February 2017

Groups	Decrease or no change	Subdued increase (Greater than 0% but less than 5%)	Moderate increase (5% but less than 10%)	Double digit increase (10% or more)
Food & Non-Alcoholic Beverages	Onion, Cucumber (Kheera), Pulse Mash (Washed), Pulse Moong (Washed), Pomegranate (Annar)	Mutton Av. Qty., Honey Langnese 500 Gm., Salt-Powdered (Lahori) Loose, Coriander Seed Powd. National	Rice Irri-6/9 (Sindh/Punj), Coconut Dry Av. Qty., Groundnuts (With Shell), Rice Basmati Broken Av. Ql, Chocolate Candy (Small Size)	Gram Whole Yellow Av. Qty, Peas, Garlic, Potatoes, Cabbage, Lemon, Besan Av. Qty., Cauliflower, Gram Whole Black Av. Qty., Kinnu, Pulse Gram, Turnip, Malta/Mosambi, Eggs Farm, Carrot
Alcoholic Beverages & Tobacco			Cigarettes Gold Leaf 20,S, Betel Nuts, Betel Leaves	Cigarettes Capstan 20,S, Cigarettes Morven Gold 20,S, Cigarettes K-20,S
Clothing & Footwear	Sewing Thread/Reel, Gents Shoe, Art 1109 Servis, Child Shoe Power Lite Bata, Sports Shoes, Ladies Spoung Chappal Bata, Ladies Sandal Bata	School Uni. Pant-Shirt Boys, Long Cloth 57" Gul Ahmed/Al Karam, Pullover Gents Oxford/Bon, Dry Cleaning Suit Coat Pant, Brassier Av. Qty	Heavy Wt Suiting Law.Pur Av. Qty, Tailoring Shirt, School Uni. Kameez, Shal-Girls, Georgette Av. Qty, Frock W/Wear Girls, Tailoring Suit (Female)	Tailoring Charges Pant (Men)
Housing, Water, Elect, Gas & other Fuels	Elect. Charges 101 - 300 Units, Elect. Charges Upto 50 Units, Elect. Charges 01 - 100 Units, Elect. Charges Above 1000 Units	Kerosene Oil, Carpenter Wage Rate, Firewood Whole, Electrician Wage Rate(P/Day), Sand (Black Pit Sand), Water Charges Per House	Iron Bar (M.S. Bar) 1/2", Bajree, Bricks (New) 1st Class, House Rent For Q-I, House Rent For Q-IV, House Rent For Q-II	Cement Blocks (6"X8"X12")
Furnishing & Household Equip. Maintenance etc	Washing Powder 1000 Grm (Express), Sewing Machine Needle (Singer), Match Box (Small), Dari Cotton (6X2 1/2)	Gas Burner Double, Boot Polish Cherry/Kiwi 50 Ml, Aluminum Cooking Pan, Boot Polish Liquid (Cherry), Bed Sheet Single Bed Sup. Qty	Sewing Machine (Singer), Carpet Plain Av. Qty, Chair Shesham Wood, Robin Blue (35 Gms), Farshi Dari 12'X9' Av. Qty	
Health	Saniplast (1 Putty), Sancos Syrup (50 Ml.), Glaxos-D (450 Gm), Renitec Tab. 5 Mg., Betnesol Eye Drops, Vicks Vaporub/ Balm	X-Ray (Chest) Charges, Urine Test (Dr) Charges, Sugar Test (Random/Fasting), Glycerin Small Bottle, ECG Charges, Trisil Tab.	Panadol Tab. Extra/Plain, Doctor (MBBS) Clinic Fee, Blood Test (Cp) Charges, O.R.S. (Nimcol), Ear Drops (Cardisorpine)	Burnol Cream 30 Gm, Lederplex Syrup, Entox Tab., Dettol (Medium), Jouhar Joshanda, Septran Tablets, Cotton Bandage 2" - 4", Disprin Tab.
Transport	Bus Fare Outside City (Non A/C), Tyre Motor Cycle Without Tube, Bus Fare Min (Within City)	Tyre Puncture Charges, Taxi 4 Seater Fare, Suzuki Fare Maximum Within City, Motor Cycle Service Charges, Car Suzuki 800 CC (W/O. AC)	Car Honda Civic 1500 CC, Gas Cylinder S.Size (L.P.G), Car Toyota 1300 CC, High Speed Diesel HSD, Car Suzuki 1000 CC	
Communication	Postal Envelope Domestic, Telephone Charges Local Call, Telephone Charges Outside City	Mobile Set Nokia/Sony/Ericsson Av. Qty, Mobile Cell Charges, Postal Envelope For Saudi Arabia	T.C.S. Ch. Min. Within Zone, Internet Charges, Telephone Set Av. Qty, Fax Charges (Local)	Postal Registration Charges
Recreation & Culture	Urdu Book Class V (T.B.Board), Computer CD (Tdk/Imation), English Book Class IX or X, Urdu Book Class IX/X (T.B.Board)	Daily "Jang", Daily "Nawa-E-Waqt", Daily "Dawn", Fountain Pen Hero/Wings/China, Exercise Book Lined 80/10, Maths Book Class IX or X	Cinema A/C High Class, Ball Pen (Local), Pencil Goldfish/Deer	Maths Book Class V (T.B.Board), Cinema Non-A/C High Class
Education	MBA Tuition Fee	Pvt Med. College Fee MBBS (1st Year), Pvt Eng. College Fee (1st Year), Govt. College Fee 1st. Year	Govt. Med. College Fee MBBS 1st Year, Pvt School Fee Eng. Med (Class-I)	Govt. Engg. Coll. Fee 1st Year, Govt. University Fee M.Sc/ MA, Coaching Charges For Class XI/ XII Science Group, I.T. Tuition Fees
Restaurant & Hotels		Tea Prepared (Ordinary), Chicken Biryani Full/Double, Bread Tandoori St. Size	Cooked Mutton (Av. Hotel), Cooked Dal (Av. Hotel), Cooked Beef (Av. Hotel)	
Miscellaneous	Shampoo Sunsilk/Pantene 100 Ml, Purse Ladies (Leather) Av. Qty	Haircut Charges for Men, Hair Color Bigen, Toothpaste Med Size Colgate 70Gms, Face Cream Ponds (Medium)	Suitcase Rexin (24"X16"X6"), Gel Medium Size, Silver Tezabi 24 Ct, Hair Oil Amla/Chambeli	Toothpowder Dentonic 90 Gms, Toilet Soap Lifebuoy 140 Gms

Table A5: City- wise CPI Inflation by Income Groups, February 2017

	Up to Rs: 8000						Rs 8001- 12000					
	General		Food		Non-Food		General		Food		Non-Food	
	MoM	YoY	MoM	YoY	MoM	YoY	MoM	YoY	MoM	YoY	MoM	YoY
1 Rawalpindi	1.2	5.7	1.9	5.4	0.3	6.1	1.1	6.4	1.9	5.8	0.4	7.0
2 Islamabad	1.0	4.6	1.4	3.7	0.6	5.7	0.9	4.5	1.4	4.0	0.5	5.0
3 Lahore	0.2	3.4	0.2	3.9	0.2	2.8	0.3	3.5	0.4	4.1	0.2	2.8
4 Gujranwala	-0.2	4.0	-0.4	2.2	0.0	6.3	-0.1	3.9	-0.1	2.5	0.0	5.5
5 Sialkot	0.2	1.4	0.4	1.0	0.0	2.0	0.3	2.1	0.5	1.8	0.0	2.4
6 Faisalabad	-0.2	7.0	-0.6	7.9	0.2	5.9	-0.1	7.2	-0.4	8.5	0.2	5.8
7 Multan	0.3	3.2	0.4	2.6	0.1	3.9	0.2	3.4	0.4	2.7	0.1	4.1
8 Sargodha	0.3	2.6	0.5	3.0	0.2	2.2	0.3	2.6	0.4	3.4	0.2	2.0
9 Bahawalpur	0.0	5.1	-0.2	3.4	0.1	6.8	0.0	6.2	-0.1	4.1	0.1	8.0
10 Karachi	-0.1	2.8	-0.1	1.8	0.0	4.2	0.0	3.1	0.0	2.3	0.0	4.0
11 Hyderabad	0.9	3.3	1.5	2.6	0.0	4.2	0.8	3.4	1.5	2.8	0.0	4.1
12 Sukkur	0.5	2.0	0.8	1.3	0.1	2.8	0.3	2.0	0.6	1.3	0.1	2.7
13 Larkana	0.0	6.3	0.0	5.6	0.0	7.0	0.0	6.3	0.0	5.5	0.0	7.0
14 Peshawar	0.3	1.5	0.3	1.3	0.2	1.7	0.2	1.7	0.3	1.4	0.2	2.0
15 Bannu	0.2	3.5	0.4	1.9	0.0	5.4	0.2	4.6	0.4	2.2	0.0	7.0
16 Quetta	-0.7	1.6	-1.2	-1.3	0.0	5.0	-0.5	1.8	-1.0	-0.8	0.1	4.7
17 Khuzdar	-0.3	1.9	-1.1	0.6	0.8	3.5	-0.5	1.1	-1.1	0.0	0.2	2.3
	Rs 12001-18000						Rs 18001-35000					
	General		Food		Non-Food		General		Food		Non-Food	
	MoM	YoY	MoM	YoY	MoM	YoY	MoM	YoY	MoM	YoY	MoM	YoY
1 Rawalpindi	1.2	6.5	1.9	6.1	0.6	6.8	1.2	6.4	2.0	6.7	0.6	6.2
2 Islamabad	1.0	4.5	1.5	4.4	0.5	4.7	1.0	4.8	1.6	4.9	0.5	4.7
3 Lahore	0.3	3.7	0.3	4.2	0.2	3.2	0.3	3.6	0.4	4.5	0.3	2.8
4 Gujranwala	0.1	4.3	0.0	2.8	0.1	5.7	0.2	4.0	0.1	3.0	0.2	4.8
5 Sialkot	0.4	1.9	0.7	1.8	0.0	2.0	0.3	1.7	0.7	2.2	0.0	1.3
6 Faisalabad	-0.1	7.8	-0.4	8.9	0.2	6.8	0.1	7.9	-0.1	9.3	0.2	6.8
7 Multan	0.3	3.9	0.5	2.9	0.2	4.8	0.4	4.0	0.7	3.2	0.2	4.6
8 Sargodha	0.3	3.7	0.5	4.2	0.2	3.2	0.4	4.3	0.6	4.7	0.2	3.9
9 Bahawalpur	0.0	6.4	-0.2	4.5	0.1	8.1	0.0	7.3	-0.3	5.0	0.2	9.0
10 Karachi	0.0	3.4	0.0	2.7	0.1	4.1	0.0	3.4	0.0	3.0	0.1	3.7
11 Hyderabad	0.8	3.7	1.5	3.1	0.2	4.3	0.8	3.5	1.5	3.3	0.2	3.7
12 Sukkur	0.3	2.3	0.4	1.6	0.1	2.9	0.2	2.3	0.3	2.1	0.1	2.5
13 Larkana	0.0	6.4	0.0	5.3	0.0	7.4	0.0	6.2	0.0	5.3	0.0	6.9
14 Peshawar	0.3	1.9	0.3	1.5	0.3	2.3	0.3	1.9	0.4	1.9	0.3	2.0
15 Bannu	0.2	4.2	0.4	2.3	0.1	5.9	0.3	4.6	0.5	2.9	0.1	5.9
16 Quetta	-0.4	2.0	-0.9	-0.4	0.1	4.4	-0.3	2.3	-0.9	-0.1	0.1	4.3
17 Khuzdar	-0.3	1.7	-0.9	0.8	0.2	2.7	-0.3	1.9	-0.8	1.1	0.2	2.6
	Above Rs 35000						Combined					
	General		Food		Non-Food		General		Food		Non-Food	
	MoM	YoY	MoM	YoY	MoM	YoY	MoM	YoY	MoM	YoY	MoM	YoY
1 Rawalpindi	0.9	6.4	2.0	6.8	0.4	6.3	1.0	6.4	2.0	6.5	0.4	6.3
2 Islamabad	0.6	5.2	1.5	5.4	0.2	5.1	0.7	5.1	1.5	5.1	0.1	5.1
3 Lahore	0.2	3.6	0.3	5.4	0.2	2.7	0.3	3.6	0.3	4.8	0.2	2.7
4 Gujranwala	0.3	4.5	0.5	3.2	0.3	5.1	0.1	4.2	0.1	2.9	0.2	5.1
5 Sialkot	0.4	1.8	0.9	2.3	0.1	1.5	0.3	1.8	0.7	2.1	0.1	1.6
6 Faisalabad	0.1	7.6	-0.1	9.2	0.2	6.9	0.0	7.5	-0.3	8.8	0.2	6.6
7 Multan	0.3	5.1	0.5	3.3	0.3	6.0	0.3	4.3	0.5	3.0	0.2	5.2
8 Sargodha	0.4	5.7	0.6	5.4	0.3	5.9	0.4	4.1	0.5	4.4	0.3	3.9
9 Bahawalpur	-0.1	8.9	-0.5	4.7	0.1	10.8	0.0	7.2	-0.3	4.4	0.1	9.0
10 Karachi	0.2	3.3	0.0	3.4	0.2	3.3	0.1	3.3	0.0	3.0	0.2	3.5
11 Hyderabad	0.8	3.9	1.5	3.6	0.4	4.1	0.8	3.6	1.5	3.2	0.3	3.9
12 Sukkur	0.2	3.0	0.2	2.2	0.2	3.3	0.3	2.4	0.4	1.9	0.2	2.7
13 Larkana	0.1	6.7	0.1	5.6	0.0	7.2	0.0	6.3	0.0	5.5	0.0	6.8
14 Peshawar	0.5	2.7	0.5	2.2	0.5	3.0	0.4	2.2	0.4	1.8	0.4	2.5
15 Bannu	0.1	6.4	0.2	3.0	0.1	8.1	0.2	4.6	0.4	2.5	0.1	6.0
16 Quetta	-0.2	2.7	-0.8	0.6	0.0	3.7	-0.3	2.2	-0.9	-0.2	0.0	3.9
17 Khuzdar	-0.2	1.7	-0.8	-0.3	0.1	2.7	-0.3	1.6	-0.9	0.6	0.1	2.3

Table A6: City- wise CPI Inflation (YoY) February, 2017

City	High inflation cities			City	Low inflation cities		
	General	Food	Non-food		General	Food	Non-food
Gawadar	11.3	14.4	9.2	Mingora	4.1	1.2	6.0
Mianwali	10.3	6.8	12.5	Sargodha	4.1	4.4	3.9
Abbotabad	9.4	4.1	13.0	Nawabshah	3.8	5.9	2.5
Faisalabad	7.5	8.8	6.6	Muzaffargarh	3.8	3.1	4.2
Bahawalpur	7.2	4.4	9.0	Hyderabad	3.6	3.2	3.9
Rawalpindi	6.4	6.5	6.3	Lahore	3.6	4.8	2.7
Larkana	6.3	5.5	6.8	Jhang	3.5	3.7	3.3
Sahiwal	6.0	6.8	5.5	Jhelum	3.5	3.9	3.1
Loralai & Cantt	5.7	3.0	7.6	Karachi	3.3	3.0	3.5
Vehari	5.5	3.5	6.9	D. I. Khan	3.1	-0.6	5.6
Attock	5.4	6.3	4.9	D. G. Khan	2.8	1.8	3.5
Rahim Yar Khan	5.3	3.2	6.8	Wazirabad	2.7	3.4	2.2
Bahawalnagar	5.3	3.4	6.6	Sukkur	2.4	1.9	2.7
Islamabad	5.1	5.1	5.1	Quetta	2.2	-0.2	3.9
Turbat	5.0	2.6	6.4	Peshawar	2.2	1.8	2.5
Bannu	4.6	2.5	6.0	Mirpur Khas	2.0	2.1	1.9
Multan	4.3	3.0	5.2	Sialkot	1.8	2.1	1.6
Dera Mrd.Jamali	4.3	4.1	4.4	Mithi	1.8	1.6	1.9
Dadu	4.3	6.4	2.8	Khuzdar	1.6	0.6	2.3
Gujranwala	4.2	2.9	5.1	Mardan	1.5	2.1	1.2

Note: High inflation refers to equal or above average inflation, and low inflation refers to below average

Table A7: Income Group-wise Inflation (percent)						
	MoM			YoY		
	Feb-16	Jan-17	Feb-17	Feb-16	Jan-17	Feb-17
<u>Up to Rs. 8000</u>						
General	-0.3	-0.1	0.2	3.8	3.3	3.7
Food	-0.6	-1.2	0.2	3.6	2.1	2.9
Non-food	0.1	1.2	0.2	4.0	4.7	4.7
<u>Rs. 8001- 12000</u>						
General	-0.3	-0.1	0.2	4.1	3.3	3.9
Food	-0.6	-1.1	0.3	3.6	2.3	3.2
Non-food	0.1	1.1	0.2	4.6	4.4	4.5
<u>Rs. 12001- 18000</u>						
General	-0.3	0.0	0.3	3.5	3.4	4.0
Food	-0.6	-1.1	0.3	3.7	2.5	3.5
Non-food	0.0	1.0	0.2	3.4	4.3	4.4
<u>Rs. 18001- 35000</u>						
General	-0.3	0.1	0.3	4.3	3.5	4.1
Food	-0.7	-1.0	0.3	3.9	2.7	3.8
Non-food	0.0	1.0	0.2	4.6	4.1	4.4
<u>Above Rs. 35000</u>						
General	-0.2	0.4	0.3	4.1	3.9	4.4
Food	-0.7	-0.8	0.4	3.7	2.8	4.0
Non-food	0.0	0.9	0.3	4.3	4.5	4.7
<u>All income groups</u>						
General	-0.3	0.2	0.3	4.0	3.7	4.2
Food	-0.7	-1.0	0.3	3.7	2.6	3.7
Non-food	0.0	1.0	0.3	4.2	4.4	4.6

Table A8: SPI Item-wise Price Movements

Sr.No.	Items	Unit	Prices Feb-17	Percentage change	
				YoY	MoM
1	Wheat	10Kg.	349.7	-2.2	0.9
2	Wheat Flour Bag	10Kg.	386.9	-2.7	0.2
3	Rice Basmati Broken	Kg.	64.0	5.8	1.8
4	Rice Irri-6	Kg.	49.4	6.6	1.2
5	Bread Plain Med. Size (340-400 Gm.)	Each	41.1	0.7	0.0
6	Beef	Kg.	327.8	3.1	0.5
7	Mutton	Kg.	662.6	4.5	0.5
8	Chicken Live (Farm)	Kg.	135.1	7.5	8.4
9	Milk Fresh	Litr	80.5	2.8	0.2
10	Curd	Kg.	94.4	2.2	0.4
11	Milk Powdered Nido	500G	376.3	-0.7	-0.1
12	Egg Hen (Farm)	Doz.	111.7	14.7	-13.4
13	Mustard Oil	Kg.	182.1	1.3	0.3
14	Cooking Oil (Tin)	2.5Ltr	463.7	1.7	0.2
15	Veg. Ghee (Tin)	2.5Kg.	455.9	2.2	0.2
16	Veg. Ghee Loose	Kg.	145.2	6.4	0.1
17	Bananas	Doz.	74.1	8.8	5.5
18	Masoor Pulse Washed	Kg.	134.3	-8.6	-4.2
19	Moong Pulse Washed	Kg.	132.9	-17.3	-2.5
20	Mash Pulse Washed	Kg.	197.3	-23.3	-5.1
21	Gram Pulse Washed	Kg.	138.9	14.0	-14.9
22	Potatoes	Kg.	24.8	26.5	-0.8
23	Onions	Kg.	30.5	-26.4	8.4
24	Tomatoes	Kg.	39.8	10.6	26.2
25	Sugar	Kg.	63.1	0.5	-2.6
26	Gur	Kg.	85.4	-0.7	-0.8
27	Salt Powdered Loose (Lahori)	Kg.	10.7	2.3	0.0
28	Red Chilies Powder Loose	Kg.	269.5	-1.5	-1.4
29	Garlic	Kg.	308.3	29.9	2.2
30	Tea (Yellow Label)	200Gm.	178.8	-2.8	0.6
31	Cooked Beef Plate	Each	92.7	4.7	0.1
32	Cooked Dal Plate	Each	56.9	5.4	0.0
33	Tea Prepared (Sada)	Cup	20.6	5.3	0.3
34	Cigarettes K-2 (20'S)	20'S	67.1	12.1	0.9
35	Long Cloth (Coarse Latha)	Mtr.	205.6	1.4	0.0
36	Shirting	Mtr.	164.3	1.5	0.0
37	Lawn	Mtr.	251.2	3.4	0.0
38	Georgette (Voil Printed)	Mtr.	124.1	0.7	0.0
39	Sandal Gents Bata	Pair	699.0	0.0	0.0
40	Chappal Spong. Bata (Gents)	Pair	179.1	0.1	0.0
41	Sandal Ladies Bata	Pair	502.4	0.1	0.0
42	Electric Charges 1-50	Unit	2.0	0.0	0.0
43	Gas Charges upto 3.3719	Mmbtu	128.7	0.2	0.0
44	Kerosene	Litr	78.0	3.5	0.1
45	Firewood	40Kg	612.2	1.2	0.5
46	Energy Savor 14 Watts	Each	167.8	0.3	0.0
47	Washing Soap (200-250 Gm.)	Cake	25.9	4.7	0.0
48	Match Box	Each	2.2	9.5	0.0
49	Petrol	Litr	71.6	-0.6	5.4
50	Diesel	Litr	80.9	5.5	4.8
51	L.P.G.(11 Kg Cylinder.)	Each	1190.3	11.8	2.4
52	Tele. Local Call	Call	3.9	0.0	0.0
53	Bath Soap Lifebuoy (Standard)	Cake	38.2	7.0	1.6
Maximum				29.9	26.2
Median				2.2	0.1
Minimum				-26.4	-14.9

Table A9: Distribution of Price Changes (YoY) - WPI Items: February 2017				
Groups	Decrease or no change	Subdued increase (Greater than 0% but less than 5%)	Moderate increase (5% but less than 10%)	Double digit increase (10% or more)
Agriculture Forestry & Fishery Products	Hides and Fur Skins-Raw, Sorghum/Jowar, Stimulant and Spice Crops, Sugar Crops, Millet/Bajra, Dry Fruits, Wheat, Maize, Fresh Fruits	Milk from Bovine Animals, Fuel Wood in Logs, Cotton Seeds, Vegetables, Raw Animal Material/Wool	Pulses	Edible Roots/Potatoes, Fish Live Fresh or Chilled, Fibre Crops, Unmanufactured Tobacco, Other Oil Seeds, Eggs, Poultry, Rice
Ores & Minerals, Electricity Gas & Water	Coal not Agglomerated, Salt & Pure Sodium Chloride, Electrical Energy	Natural Gas Liquefied		
Food Products, Beverages and Tobacco, Textiles, Apparel and Leather Products	Coffee and Tea, Nylon Yarn, Wheat Flour, Sugar Refined, Chocolate, Silk and Reyon Fabrics, Bed Sheets, Other Leather N.E.C, Synthetic Carpets, Leather Without Hairs	Meat of Animals, Processed Liquid Milk, Cotton Fabrics, Oil Cakes, Vegetable Oil Refined, Towels, Blended Yarn, Ready Made Garments, Other Fabrics, Dairy Products N.E.C, Fruit Juices, Blankets, Quilts, Other Food Products, Spices, Beverages, Milk and Cream in Solid Form	Hosiery Products, Sugar Confectionary, Vegetable Ghee, Ice Cream, Footwear, Dried Fruits & Nuts, Mineral Water	Other Cereal Flour, Woolen Carpets, Cotton Yarn, Tobacco Products, Woven Fabrics, Vegetables & Fruit Juices
Other Transportable Goods except Metal Products, Machinery and Equipments	Fertilizers, Chemicals, Auto Tyres, Pesticides, Plastic Products, Bed Foams, Kerosene Oil, Coke, Dying Materials	Soaps & Detergent, Timber, Ceramics and Sanitary, Printing Paper, Bricks Blocks and Tiles, Matches, Mobil Oil, Paints & Varnishes, Motor Sprit	Diesel Oil, Cement	Furnace Oil, Glass Sheets, Other Glass Articles, Medicines, Hard Board, Insecticides
Metal Product Machinery & Equipment	Cultivators, Tractors, Air Conditioners, Motor Cycles, Pig Iron, Concrete Mixer	Steel Bars & Sheets, Electrical Wires, Refrige,Wash& Sew Mach,Iron,Fan, Motor Vehicles, Chuff Cutter, Lighting Equipments, Bicycles, Steel Products	Engines and Motors, Vacuum Pumps	Radio and Television, Pipe Fittings, Lathe Machines

Table A10: Consumer Price Index Numbers by Major Groups and Composite Commodities

Items and specification	Weights	Index		
		Feb-16	Jan-17	Feb-17
General	100.00	202.98	210.94	211.54
Food & Non-Alcoholic Beverages.	34.83	214.99	220.96	221.66
1 Wheat	0.35	209.18	206.77	207.84
2 Wheat Flour	4.16	217.05	213.27	213.15
3 Wheat Product	0.10	213.03	217.11	216.39
4 Besan	0.15	258.32	342.04	310.18
5 Rice	1.58	156.66	162.33	168.06
6 Cereals	0.16	245.93	253.51	253.65
7 Bakery & Confectionary	1.16	211.97	216.35	216.92
8 Nimco	0.46	246.64	250.60	250.62
9 Meat	2.43	259.99	267.47	268.26
10 Chicken	1.36	148.72	153.54	165.68
11 Fish	0.30	217.07	218.20	219.56
12 Milk Fresh	6.68	259.27	267.90	268.32
13 Milk Product	0.63	250.66	257.80	258.54
14 Milk Powder	0.11	234.30	236.11	236.18
15 Egg	0.46	202.68	251.58	229.60
16 Mustard Oil	0.10	155.57	156.91	158.04
17 Cooking Oil	1.75	132.13	135.30	135.95
18 Vegetable Ghee	2.07	135.96	140.90	141.52
19 Dry Fruits	0.25	262.54	265.17	264.98
20 Fresh Fruits	1.86	204.55	219.65	225.40
21 Pulse Masoor	0.27	202.55	201.31	192.76
22 Pulse Moong	0.23	300.13	262.78	256.42
23 Pulse Mash (Washed)	0.21	348.73	308.62	289.59
24 Pulse Gram	0.24	268.47	365.37	319.93
25 Gram Whole	0.16	223.24	314.06	295.48
26 Beans	0.03	233.25	231.08	232.05
27 Potatoes	0.48	123.43	166.57	162.81
28 Onion	0.54	247.60	163.19	173.49
29 Tomatoes	0.45	114.98	98.21	126.67
30 Fresh Vegetable	1.66	190.61	220.80	221.50
31 Sugar	1.04	223.59	232.55	226.80
32 Gur	0.02	266.92	266.60	267.08
33 Honey	0.04	307.75	319.03	322.20
34 Sweet Meet	0.25	241.33	245.95	246.37
35 Beverages	1.20	215.64	218.57	218.90
36 Jam, Tomato Ketchup & Pickle	0.25	212.12	216.69	216.89
37 Condiments	0.27	262.38	265.97	266.55
38 Spices	0.54	239.15	238.31	238.85
39 Tea	0.84	282.69	266.44	270.18
Alcoholic Beverages, Tobacco	1.41	337.57	377.97	379.55
40 Cigarette	1.39	339.36	380.19	381.80
41 Betel Leaves & Nuts	0.02	229.29	242.96	243.31
Clothing & Footwear	7.57	224.97	234.02	234.34
42 Cotton Cloth	1.73	216.48	225.84	226.39
43 Woolen Cloth	0.88	240.78	254.50	254.92
44 Ready Made Garment	0.97	229.79	239.29	239.59
45 Woolen Readymade Garments	0.40	254.84	265.41	264.98
46 Hosiery	0.51	238.88	245.83	245.96
47 Dopatta	0.44	239.78	242.99	243.52
48 Cleaning & Laundering	0.21	251.12	259.00	261.12

Table A10: Consumer Price Index Numbers by Major Groups and Composite Commodities				
Items and specification	Weights	Index		
		Feb-16	Jan-17	Feb-17
49 Tailoring	0.88	289.94	310.40	310.54
50 Footwear	1.55	165.44	166.84	166.91
Housing,Water,Elect,Gas & Other Fuel	29.41	185.49	194.42	194.45
51 House Rent	21.81	174.32	185.86	185.86
52 Construction Input Item	0.56	242.77	249.60	249.82
53 Construction Wage Rate	0.33	225.13	234.42	235.67
54 Water Supply	0.50	161.10	164.74	164.74
55 Electricity	4.40	238.10	238.10	238.10
56 Gas	1.58	158.08	158.08	158.08
57 Kerosene Oil	0.01	189.04	198.47	198.47
58 Fire Wood Whole	0.23	283.33	292.43	293.08
Furnished H.Hold Equip.& Maint. Etc	4.21	218.83	223.92	224.32
59 Furniture	0.33	208.62	215.79	216.40
60 Household Textile	0.65	217.54	226.38	226.59
61 Household Equipment	0.59	176.18	179.16	179.63
62 Utensils	0.32	219.75	226.40	227.90
63 Plastic Products	0.25	206.33	209.10	209.42
64 Washing Soap & Detergent	0.79	226.94	230.09	230.50
65 Sewing Needle & Dry Cell	0.15	203.40	204.24	204.96
66 Household Servant	1.04	244.50	249.98	249.98
67 Marriage Hall Charges	0.08	238.96	243.95	244.86
Health	2.19	184.18	208.45	210.17
68 Drug Medicine	1.27	151.34	183.44	183.60
69 Medical Equipment	0.01	227.00	248.70	250.20
70 Doctor (MBBS) Clinic Fee	0.59	253.49	271.39	275.73
71 Medical Test	0.32	185.26	190.38	193.51
Transport	7.20	174.05	172.81	174.75
72 Motor Vehicle	0.66	165.19	171.79	172.13
73 Motor Vehicle Accessories	0.24	220.92	213.33	213.44
74 Motor Fuel	3.03	144.21	141.65	146.07
75 Mechanical Service	0.46	222.80	228.81	229.62
76 Motor Vehicle Tax	0.11	210.18	210.18	210.18
77 Transport Services	2.70	195.73	193.34	193.34
Communication	3.22	130.57	131.54	131.58
78 Postal Services	0.07	235.86	245.18	246.00
79 Communication & Apparatus	3.15	128.36	129.15	129.17
Recreation & Culture	2.02	194.38	196.73	196.88
80 Recreation & Culture	0.86	128.58	129.45	129.61
81 Text Books	0.57	290.62	292.41	292.41
82 News Papers	0.19	175.49	179.20	179.59
83 Stationery	0.40	208.44	214.16	214.35
Education	3.94	210.15	233.41	233.96
84 Education	3.94	210.15	233.41	233.96
Restaurants And Hotels	1.23	259.39	268.90	269.63
85 Ready Made Food	1.23	259.39	268.90	269.63
Miscellaneous Goods And Services	2.76	230.15	238.58	241.06
86 Personal Care	1.49	212.55	219.78	221.97
87 Cosmetics	0.39	197.67	202.56	203.29
88 Blades	0.03	195.05	196.34	196.91
89 Personal Equipments	0.84	277.46	289.89	293.78

Table A11: Wholesale Price Index Numbers by Major Groups and Composite Commodities

Items and Specifications	Index		
	Feb-16	Jan-17	Feb-17
General	205.05	214.84	215.86
Agriculture Forestry & Fishery	221.23	240.28	243.57
1 Wheat	220.02	214.17	215.69
2 Maize	189.65	186.37	187.42
3 Rice	141.69	153.30	157.46
4 Sorghum/Jowar	263.80	236.93	235.79
5 Millet/Bajra	176.35	167.74	168.08
6 Vegetables	204.49	203.45	211.37
7 Fresh Fruits	231.68	221.77	230.94
8 Dry Fruits	250.92	242.90	241.74
9 Cotton Seeds	257.94	266.81	267.94
10 Other Oil Seeds	157.46	189.43	181.39
11 Edible Roots/ Potatoes	118.35	171.38	164.46
12 Stimulant And Spice Crops	242.72	221.64	224.40
13 Pulses	247.95	294.48	271.33
14 Sugar Crops	286.29	268.94	268.94
15 Fibre Crops	175.71	207.18	216.97
16 Unmanufactured Tobacco	230.02	274.91	277.88
17 Poultry	151.73	157.27	169.47
18 Milk From Bovine Animals	255.42	268.18	266.07
19 Eggs	204.96	257.22	229.04
20 Raw Animal Material/Wool	177.45	177.44	178.30
21 Hides And Fur Skins, Raw	150.46	113.78	105.67
22 Fuel Wood In Logs	266.30	277.01	277.01
23 Fishes Live Fresh Or Chilled	336.96	446.03	466.43
Ores/Minerals, Gas & Elect.	245.89	242.43	242.78
24 Coal Not Agglomerated	174.51	155.29	155.29
25 Natural Gas Liquefied	210.01	210.29	210.99
26 Salt & Pure Sodium Chloride	252.31	235.45	238.53
27 Electrical Energy	293.09	288.00	288.00
Food, Beverages, Tobacco, Textiles	215.03	226.31	226.40
28 Meat Of Animals	268.53	282.02	279.49
29 Vegetables & Fruit Juices	201.36	222.28	223.21
30 Dried Fruits & Nuts	250.38	264.94	264.08
31 Fruit Juices	175.90	179.58	179.72
32 Vegetable Oil Refined	148.73	152.91	154.12
33 Vegetable Ghee	118.76	126.00	126.40
34 Oil Cakes	217.76	230.47	225.71
35 Processed Liquid Milk	247.57	257.57	257.27
36 Milk And Cream In Solid Form	219.09	219.07	219.31
37 Ice Cream	223.70	238.04	238.04
38 Dairy Products N.E.C	248.13	254.27	254.42
39 Wheat Flour	201.07	197.36	197.50
40 Other Cereal Flour	225.94	318.36	269.57
41 Sugar Refined	239.31	244.78	235.50
42 Chocolate	101.06	100.00	100.00
43 Sugar Confectionary	118.83	128.44	128.44
44 Coffee And Tea	261.24	241.34	244.86
45 Spices	189.65	190.41	190.46
46 Other Food Products	292.52	293.85	293.85
47 Mineral Water	189.02	198.57	198.57
48 Beverages	171.95	172.33	172.33
49 Tobacco Products	387.30	445.85	445.85
50 Cotton Yarn	175.22	196.95	203.06
51 Nylon Yarn	147.08	143.99	143.99
52 Blended Yarn	175.44	180.91	181.06
53 Woven Fabrics	275.66	310.72	310.72
54 Cotton Fabrics	201.65	209.34	209.30
55 Other Fabrics	217.82	224.40	224.40

Table A11: Wholesale Price Index Numbers by Major Groups and Composite Commodities				
		Index		
Items and Specifications		Feb-16	Jan-17	Feb-17
56 Silk And Rayon Fabrics		186.80	188.10	186.55
57 Towels		267.20	271.17	276.14
58 Blankets		243.93	247.52	247.38
59 Bed Sheets		256.29	256.07	256.07
60 Quilts		201.47	203.79	203.79
61 Woolen Carpets		166.67	196.43	196.43
62 Synthetic Carpets		129.25	129.25	129.25
63 Hosiery Products		222.52	241.83	241.83
64 Ready Made Garments		193.27	199.15	199.15
65 Leather With Out Hairs		221.97	221.97	221.97
66 Other Leather N.E.C		207.31	207.31	207.31
67 Footwear's		137.38	145.51	145.51
Other Transportable Goods		164.03	170.47	170.89
68 Timber		216.79	225.41	225.41
69 Printing Paper		161.82	165.63	165.63
70 Hard Board		197.92	220.83	220.83
71 Coke		163.45	163.45	163.45
72 Motor Sprit		120.33	115.01	120.40
73 Diesel Oil		142.84	149.57	153.09
74 Kerosene Oil		115.11	115.49	115.11
75 Furnace Oil		48.20	108.68	105.61
76 Mobil Oil		196.00	196.91	196.91
77 Chemicals		183.07	177.81	170.99
78 Dying Materials		146.55	146.55	146.55
79 Fertilizers		266.79	215.39	215.96
80 Pesticides		312.37	304.43	304.43
81 Insecticides		129.81	141.62	143.12
82 Paints & Varnishes		295.36	296.43	296.43
83 Medicines		153.18	173.72	173.83
84 Soaps & Detergent		183.70	190.99	191.29
85 Auto Tyres		186.64	176.87	177.07
86 Plastic Products		226.58	225.73	225.73
87 Glass Sheets		231.30	297.20	297.20
88 Other Glass Articles		243.63	306.37	307.95
89 Ceramics And Sanitary		227.51	234.18	234.18
90 Bricks Blocks And Tiles		216.02	219.28	219.99
91 Cement		206.70	217.11	218.23
92 Bed Foams		167.67	168.33	167.17
93 Matches		162.62	165.53	165.53
Metal Product Machinery & Equip		170.44	174.43	174.49
94 Pig Iron		128.97	128.97	128.97
95 Steel Bars & Sheets		123.59	129.19	129.50
96 Pipe Fittings		193.06	214.33	214.33
97 Steel Products		176.83	177.41	177.41
98 Engines And Motors		109.24	116.98	116.98
99 Vacuum Pumps		115.39	123.69	123.69
100 Air Conditioners		200.18	200.10	200.10
101 Cultivators		219.76	190.66	190.66
102 Chuff Cutter		149.20	153.46	153.46
103 Tractors		205.43	201.75	201.75
104 Lathe Machines		208.81	241.06	241.06
105 Concrete Mixer		138.83	138.83	138.83
106 Refrige,Wash& Sew Mach, Iron,Fan		199.42	207.15	207.15
107 Electrical Wires		195.19	204.51	204.51
108 Lighting Equipments		167.30	170.73	170.73
109 Radio And Television		126.49	140.42	140.42
110 Motor Vehicles		185.25	191.39	191.39
111 Motor Cycles		125.89	125.89	125.89
112 Bicycles		185.63	187.65	187.65

Table A12: Price Indices - Base 2007-08 = 100

Period		CPI			WPI			SPI *
		Overall	Food	Non-food	Overall	Food	Non-Food	
2008-09		117.03	123.12	113.38	118.93	119.68	118.45	123.26
2009-10		128.85	139.05	122.73	135.40	136.85	134.48	139.84
2010-11		146.45	164.10	135.87	164.17	159.26	167.28	164.02
2011-12		162.57	182.20	150.80	181.28	181.32	181.26	178.67
2012-13		174.53	195.18	162.16	194.61	197.21	192.95	189.64
2013-14		189.58	212.74	175.69	210.48	213.04	208.85	208.66
2014-15		198.16	220.20	184.95	209.85	226.22	199.47	212.61
2015-16		203.82	224.78	191.25	207.64	234.69	190.47	216.23
2014	Oct	199.81	223.74	185.47	214.39	229.02	205.11	216.67
	Nov	198.79	222.74	184.44	212.26	227.29	202.73	214.45
	Dec	196.79	218.08	184.03	208.25	223.48	198.59	211.76
2015	Jan	196.95	217.10	184.87	206.11	223.48	195.09	209.89
	Feb	195.13	213.15	184.33	203.86	222.26	192.19	206.98
	Mar	195.57	214.25	184.37	203.89	222.11	192.33	207.05
	Apr	198.16	217.26	186.71	205.65	225.38	193.13	208.42
	May	199.66	221.22	186.74	207.92	228.09	195.12	211.48
	Jun	200.89	223.84	187.13	210.37	232.39	196.40	214.29
	Jul	201.76	224.14	188.35	209.53	233.68	194.20	215.13
	Aug	202.25	224.86	188.70	208.42	236.00	190.92	214.33
	Sep	202.04	223.87	188.95	207.60	234.37	190.61	215.23
	Oct	203.03	224.86	189.95	208.69	234.47	192.34	217.02
	Nov	204.22	227.55	190.23	208.72	232.83	193.43	219.37
	Dec	203.06	223.90	190.57	207.37	230.72	192.55	218.60
2016	Jan	203.49	222.58	192.05	206.27	231.14	190.48	217.47
	Feb	202.98	221.07	192.14	205.05	231.26	188.42	215.73
	Mar	203.28	222.25	191.91	204.22	231.43	186.95	215.13
	Apr	206.43	227.53	193.78	206.87	237.05	187.72	215.88
	May	205.99	225.84	194.09	208.01	238.62	188.59	214.35
	Jun	207.30	228.95	194.32	210.88	244.68	189.44	216.58
	Jul	210.08	234.69	195.33	215.81	251.76	192.99	218.81
	Aug	209.46	232.48	195.66	215.75	250.12	193.95	218.66
	Sep	209.88	232.80	196.14	214.61	250.41	191.89	218.67
	Oct	211.57	234.68	197.72	214.53	250.63	191.64	220.11
	Nov	212.01	235.17	198.13	214.07	247.89	192.62	220.68
	Dec	210.57	230.69	198.51	213.76	244.40	194.32	219.73
2017	Jan	210.94	228.45	200.44	214.84	244.73	195.87	218.35
	Feb	211.54	229.19	200.96	215.86	244.91	197.42	219.25

*: all groups combined

Table A13: International Commodity Prices/ Indices				
	Nov-16	Dec-16	Jan-17	Feb-17
Energy				
Crude Oil (US\$ per barrel) *	45.3	52.6	53.6	54.4
IMF Energy Index (2005 = 100)	88.5	100.0	101.6	103.0
WB Energy Index (2010 = 100) @	59.4	68.4	68.9	69.4
Food				
Rice (\$/MT)	360.8	367.5	372.5	368.1
Wheat (\$/MT)	122.5	122.8	137.1	147.3
Sugar (US cent/ pound)	20.9	18.8	20.5	20.3
Palm Oil (\$/MT)	670.0	711.8	726.5	706.8
Soybean Oil (\$/MT)	772.4	800.3	771.9	742.9
Non-Food Non-Energy				
Cotton Outlook 'A' Index #	78.9	79.5	82.3	85.2
IMF Metal Price Index (2005 = 100)	136.5	140.7	143.2	150.7
Copper (\$/MT)	5,450.9	5,660.4	5,754.6	5,940.9
Aluminum (\$/MT)	1,737.1	1,727.7	1,791.2	1,860.8
Iron Ore (\$ cents/dry MT)	74.1	79.4	80.8	88.8
Tin (\$/MT)	21,126.1	21,204.4	20,691.8	19,446.5
Nickel (\$/MT)	11,128.9	10,972.3	9,971.5	10,643.3
Zinc (\$/MT)	2,566.2	2,664.8	2,714.8	2,845.6
Lead (\$/MT)	2,180.6	2,209.8	2,242.6	2,311.5
Uranium (\$/MT)	18.5	19.1	22.1	24.0
DAP (\$/MT)	323.0	315.0	325.0	360.0
Urea (\$/MT)	211.0	216.0	241.0	247.0
Source: IMF and World Bank				
\$/MT = US\$ per metric ton.				
* Crude Oil (Petroleum), simple average of three spot prices; Dated Brent, West Texas Intermediate, and the Dubai fateh				
# Middling 1-3/32 inch staple, Liverpool Index "A", average of the cheapest Cts/lb five of fourteen styles, CIF Liverpool (Cotton Outlook, Liverpool). From January 1968 to May 1981 strict middling 1-1/16 inch staple. Prior to 1968, Mexican 1-1/16.2/				
DAP: Diammonium Phosphate				
@ World Bank commodity index for low and middle income countries				

Table 14: CPI Data Series Original and Seasonally Adjusted					
Original Series					
Period	FY13	FY14	FY15	FY16	FY17
Jul	169.57	183.58	198.05	201.76	210.08
Aug	171.09	185.71	198.70	202.25	209.46
Sep	172.44	185.18	199.40	202.04	209.88
Oct	173.10	188.82	199.81	203.03	211.57
Nov	172.42	191.21	198.79	204.22	212.01
Dec	172.82	188.68	196.79	203.06	210.57
Jan	175.70	189.60	196.95	203.49	210.94
Feb	175.11	189.00	195.13	202.98	211.54
Mar	175.82	190.82	195.57	203.28	
Apr	177.74	194.06	198.16	206.43	
May	178.65	193.55	199.66	205.99	
Jun	179.94	194.74	200.89	207.30	
Seasonally Adjusted Series					
Jul	168.77	182.58	196.88	200.52	208.73
Aug	169.78	184.25	197.16	200.72	207.85
Sep	171.31	184.00	198.14	200.81	208.64
Oct	171.63	187.25	198.17	201.40	209.90
Nov	171.37	189.98	197.55	202.97	210.71
Dec	173.72	189.64	197.75	203.98	211.47
Jan	176.21	190.22	197.61	204.22	211.75
Feb	176.92	190.98	197.18	205.11	213.74
Mar	177.36	192.56	197.40	205.24	
Apr	177.73	194.06	198.16	206.45	
May	179.27	194.21	200.31	206.64	
Jun	180.65	195.46	201.56	207.94	

Table 15: CPI Food Data Series Original and Seasonally Adjusted					
Original Series					
Period	FY13	FY14	FY15	FY16	FY17
Jul	190.72	208.19	222.80	224.14	234.69
Aug	192.47	212.27	224.05	224.86	232.48
Sep	193.80	209.09	224.12	223.87	232.80
Oct	193.66	212.61	223.74	224.86	234.68
Nov	193.03	218.16	222.74	227.55	235.17
Dec	192.97	210.89	218.08	223.90	230.69
Jan	196.58	210.81	217.10	222.58	228.45
Feb	194.05	208.74	213.15	221.07	229.19
Mar	195.06	213.11	214.25	222.25	
Apr	197.74	217.33	217.26	227.53	
May	200.00	214.75	221.22	225.84	
Jun	202.11	216.98	223.84	228.95	
Seasonally Adjusted Series					
Jul	189.13	206.12	220.35	221.52	231.80
Aug	189.40	208.80	220.38	221.19	228.63
Sep	190.90	206.04	220.88	220.71	229.65
Oct	190.43	209.21	220.23	221.43	231.22
Nov	190.04	214.69	219.23	224.05	231.55
Dec	194.49	212.49	219.62	225.31	232.00
Jan	198.09	212.64	219.11	224.81	230.95
Feb	198.46	213.54	218.12	226.20	234.49
Mar	198.17	216.61	217.89	226.12	
Apr	198.48	218.18	218.16	228.50	
May	201.69	216.57	223.03	227.68	
Jun	203.71	218.55	225.25	230.23	

Table 16: CPI Monthly & Average Seasonal Factors

Period	FY13	FY14	FY15	FY16	FY17	Average
Jul	100.48	100.55	100.60	100.62	100.65	100.58
Aug	100.77	100.79	100.78	100.76	100.77	100.78
Sep	100.66	100.64	100.63	100.61	100.59	100.63
Oct	100.85	100.84	100.83	100.81	100.80	100.83
Nov	100.61	100.65	100.63	100.62	100.61	100.62
Dec	99.48	99.49	99.52	99.55	99.57	99.52
Jan	99.71	99.68	99.66	99.64	99.62	99.66
Feb	98.98	98.96	98.96	98.96	98.97	98.97
Mar	99.13	99.10	99.07	99.05		99.09
Apr	100.00	100.00	100.00	99.99		100.00
May	99.66	99.66	99.67	99.68		99.67
Jun	99.61	99.63	99.67	99.69		99.65

Table 17: CPI Food Monthly & Average Seasonal Factors

Period	FY13	FY14	FY15	FY16	FY17	Average
Jul	100.84	101.01	101.11	101.19	101.25	101.08
Aug	101.62	101.66	101.66	101.66	101.68	101.66
Sep	101.52	101.48	101.47	101.43	101.37	101.45
Oct	101.70	101.63	101.59	101.55	101.50	101.59
Nov	101.58	101.62	101.60	101.56	101.56	101.58
Dec	99.22	99.25	99.30	99.38	99.44	99.32
Jan	99.24	99.14	99.08	99.01	98.92	99.08
Feb	97.78	97.75	97.72	97.73	97.74	97.74
Mar	98.43	98.39	98.33	98.29		98.36
Apr	99.63	99.61	99.59	99.57		99.60
May	99.16	99.16	99.19	99.19		99.18
Jun	99.21	99.28	99.37	99.45		99.33

Table 18: CPI Month-on-Month % Change Original & Seasonally Adjusted					
Original Series					
Period	FY13	FY14	FY15	FY16	FY17
Jul	-0.25	2.02	1.70	0.43	1.34
Aug	0.90	1.16	0.33	0.24	-0.30
Sep	0.79	-0.29	0.35	-0.10	0.20
Oct	0.38	1.97	0.21	0.49	0.81
Nov	-0.39	1.27	-0.51	0.59	0.21
Dec	0.23	-1.32	-1.01	-0.57	-0.68
Jan	1.67	0.49	0.08	0.21	0.18
Feb	-0.34	-0.32	-0.92	-0.25	0.28
Mar	0.41	0.96	0.23	0.15	
Apr	1.09	1.70	1.32	1.55	
May	0.51	-0.26	0.76	-0.21	
Jun	0.72	0.61	0.62	0.64	
Seasonally Adjusted Series					
Jul	-1.12	1.07	0.73	-0.52	0.38
Aug	0.60	0.92	0.14	0.10	-0.42
Sep	0.90	-0.14	0.50	0.04	0.38
Oct	0.19	1.76	0.01	0.29	0.60
Nov	-0.15	1.46	-0.31	0.78	0.39
Dec	1.37	-0.18	0.10	0.50	0.36
Jan	1.44	0.30	-0.07	0.12	0.13
Feb	0.40	0.40	-0.22	0.44	0.94
Mar	0.25	0.83	0.11	0.06	
Apr	0.21	0.78	0.39	0.59	
May	0.86	0.08	1.08	0.10	
Jun	0.77	0.64	0.62	0.63	

Table 19: CPI Food Month-on-Month % Change Original & Seasonally Adjusted					
Original Series					
Period	FY13	FY14	FY15	FY16	FY17
Jul	1.80	3.01	2.68	0.13	2.50
Aug	0.92	1.96	0.56	0.32	-0.94
Sep	0.69	-1.50	0.03	-0.44	0.14
Oct	-0.07	1.68	-0.17	0.44	0.81
Nov	-0.33	2.61	-0.45	1.20	0.21
Dec	-0.03	-3.33	-2.09	-1.61	-1.90
Jan	1.87	-0.04	-0.45	-0.59	-0.97
Feb	-1.29	-0.98	-1.82	-0.68	0.32
Mar	0.52	2.10	0.52	0.54	
Apr	1.37	1.98	1.41	2.38	
May	1.15	-1.19	1.82	-0.74	
Jun	1.05	1.04	1.18	1.38	
Seasonally Adjusted Series					
Jul	0.10	1.18	0.83	-1.66	0.68
Aug	0.14	1.30	0.01	-0.15	-1.36
Sep	0.79	-1.32	0.23	-0.22	0.45
Oct	-0.24	1.54	-0.29	0.32	0.68
Nov	-0.21	2.62	-0.46	1.19	0.14
Dec	2.34	-1.03	0.18	0.56	0.19
Jan	1.85	0.07	-0.23	-0.22	-0.45
Feb	0.19	0.43	-0.45	0.62	1.53
Mar	-0.15	1.43	-0.11	-0.04	
Apr	0.16	0.73	0.13	1.06	
May	1.61	-0.74	2.23	-0.36	
Jun	1.00	0.91	1.00	1.12	

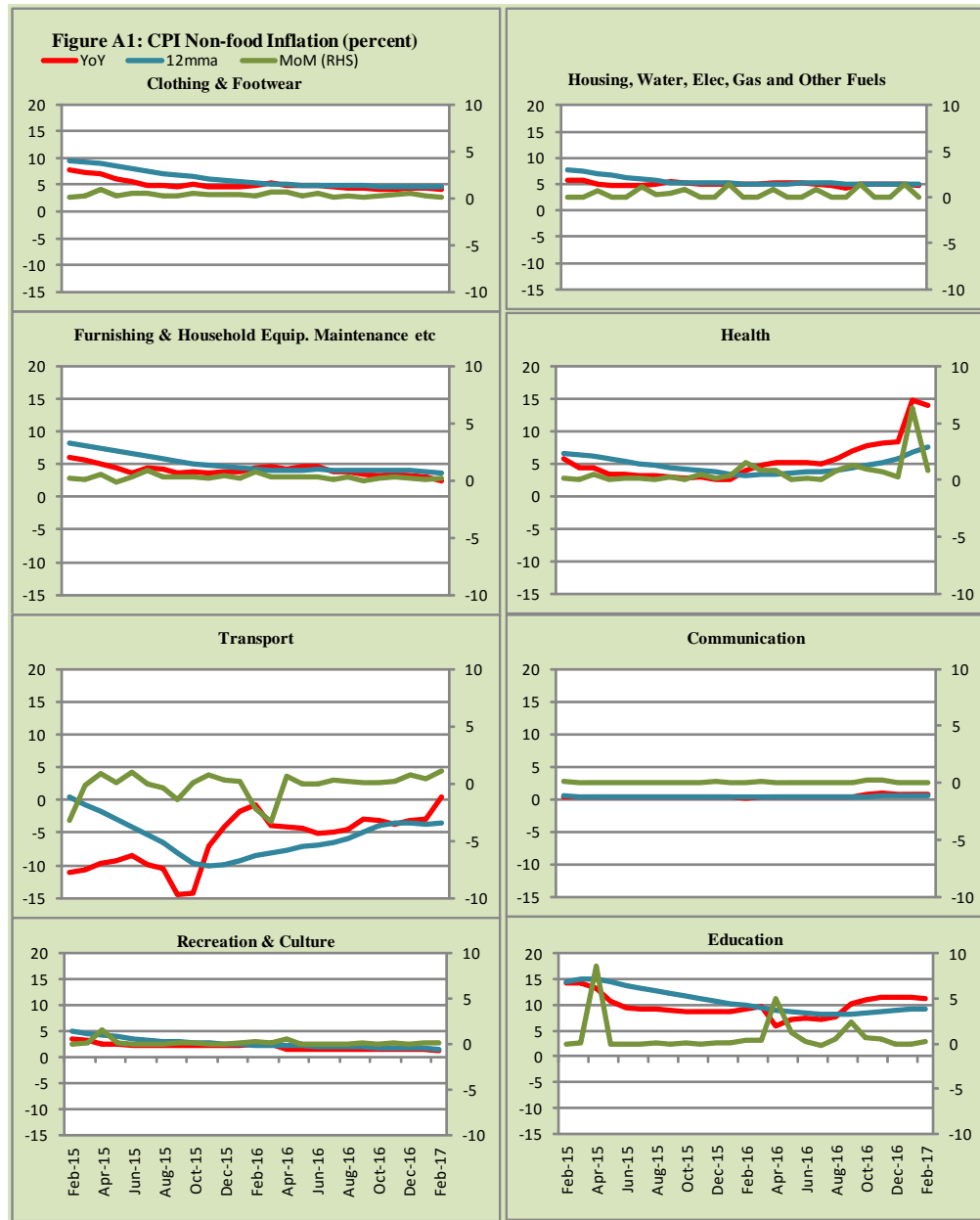


Figure A2: Frequency Distribution of Price Changes of CPI Items, February 2017

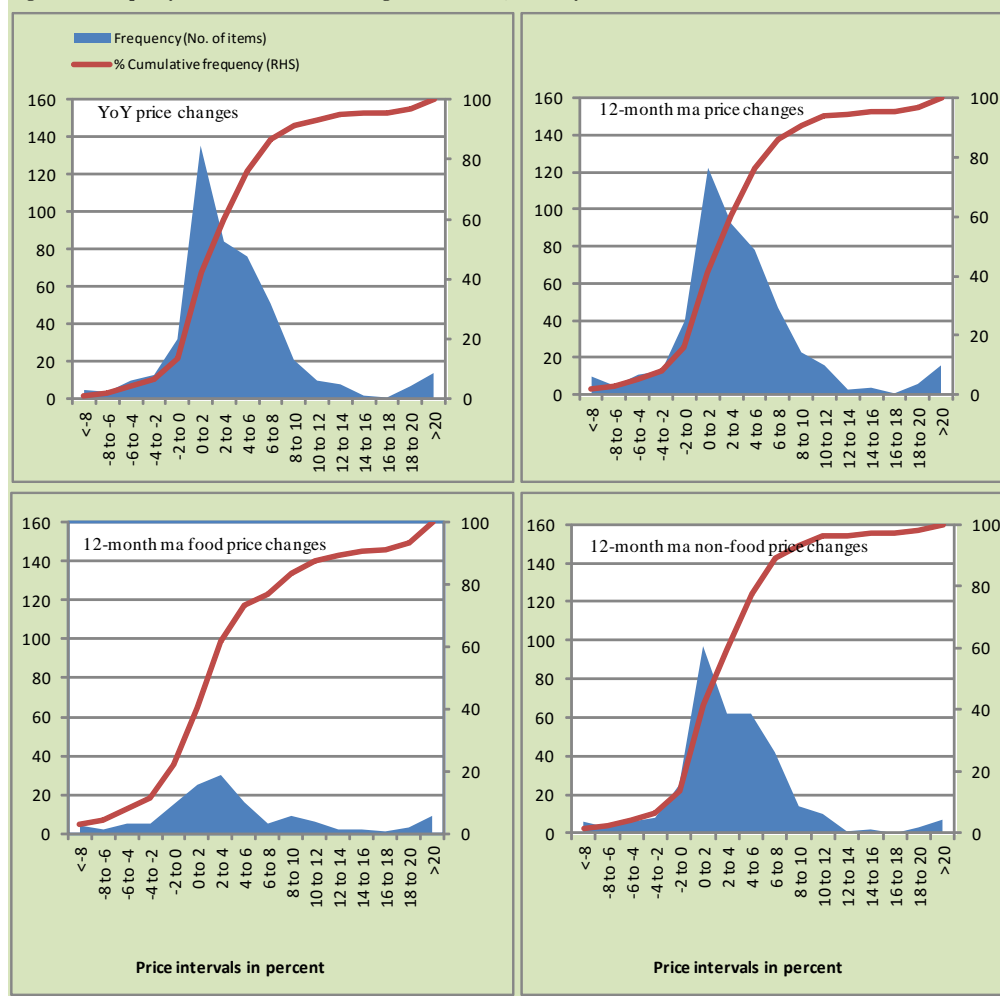


Figure A3: Frequency Distribution of Price Changes of WPI Commodities, February 2017

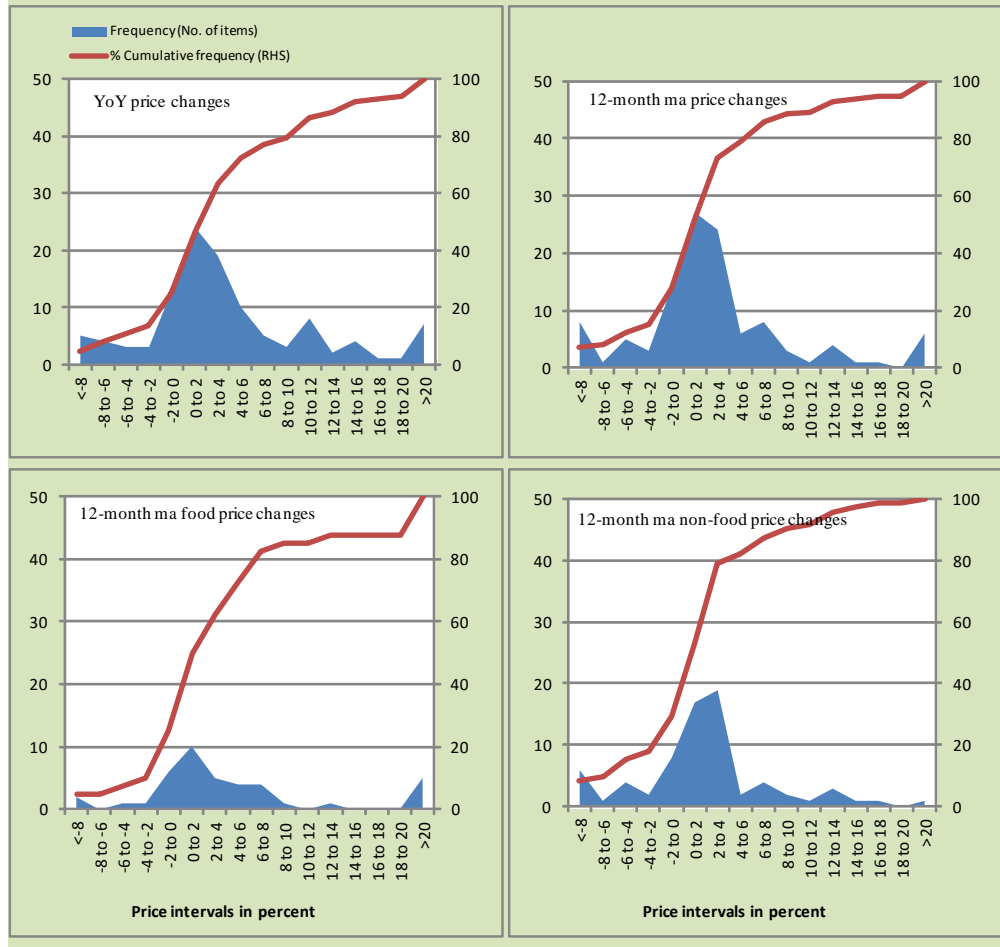
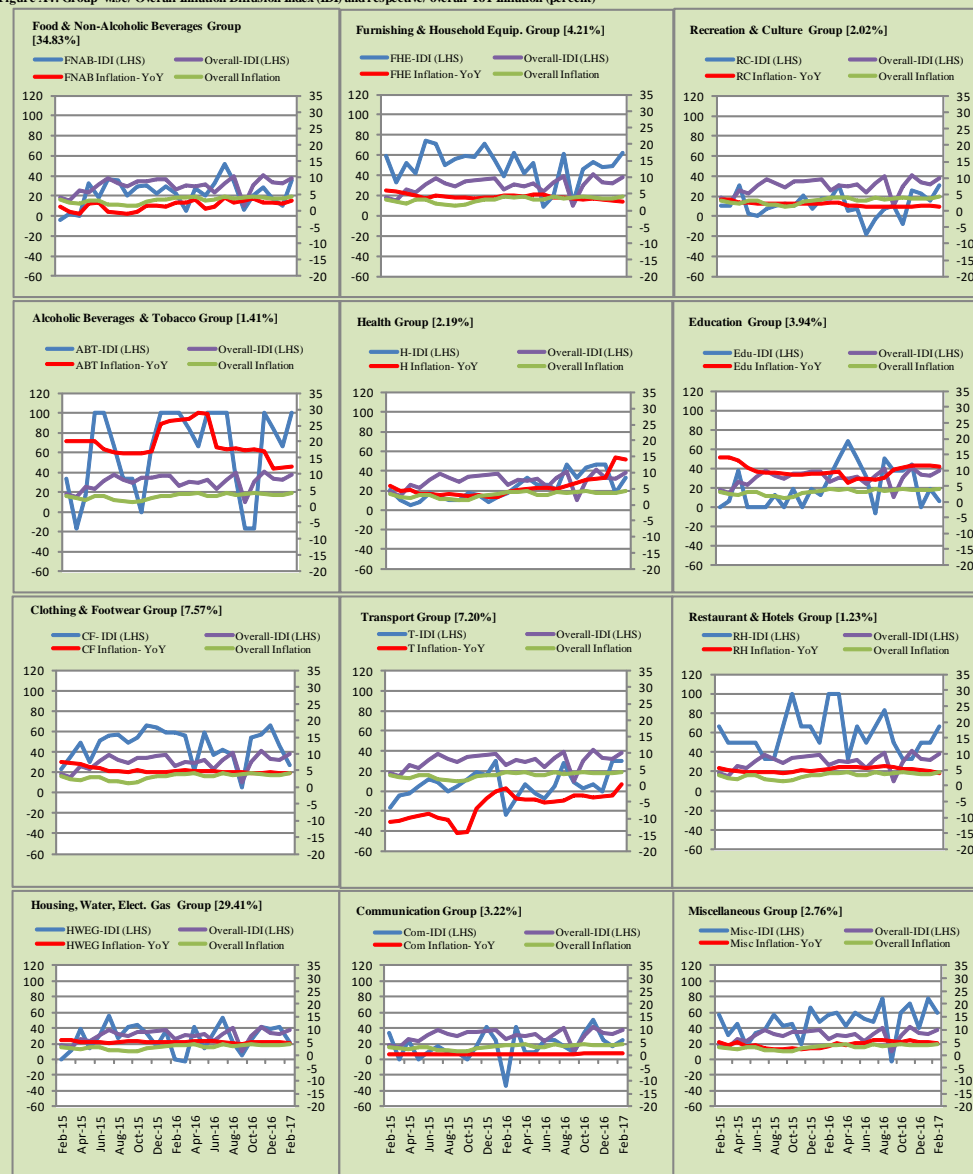


Figure A4: Group-wise/ Overall Inflation Diffusion Index (IDI) and respective/ overall YoY Inflation (percent)



Numbers in square brackets show the weights of respective groups in the CPI baskets.

Annexure B

Technical Notes

1. All the three measures of inflation, viz. CPI, WPI and SPI are computed by the following Laspeyres Index formula:

$$I_t = \sum_j w_0^j \left(\frac{P_t^j}{P_0^j} \right)$$

Where I_t is price index, w_0^j is weight of commodity j in the overall basket, P_t^j is price of commodity j in period t and P_0^j is its price in the base year.

2. Base year for all the indices is the year 2007-08.
3. CPI basket contains 487 consumers' goods; WPI basket contains 463 items; SPI contains 53 items.
4. YoY inflation is the percent change of an index in a given month over the index in the same month of the last year. It is computed as follows:

$$\pi_t = \left(\frac{I_t}{I_{t-12}} - 1 \right) \times 100$$

5. Period average inflation is the percent change of the average index during the period from July to the given month of a fiscal year over the average index during the corresponding period of the last year. It is computed as follows:

$$\bar{\pi}_t = \left(\frac{\sum_{i=0}^{t-v} I_{t-i}}{\sum_{i=0}^{t-12-v} I_{t-12-i}} - 1 \right) \times 100$$

Where v is the serial number of the month of July of current fiscal year in a given time series.

6. Monthly inflation is the percent change of an index in a given month over the index in the preceding month. It is computed as follows:

$$\pi_t = \left(\frac{I_t}{I_{t-1}} - 1 \right) \times 100$$

7. 12-month moving average inflation (Long-run trend inflation) is the percent change of 12-month moving average of a price index; it is computed as follows:

$$\tilde{\pi}_t = \left(\frac{\sum_{i=0}^{11} I_{t-i}}{\sum_{i=0}^{11} I_{t-12-i}} - 1 \right) \times 100$$

8. Core Inflation is defined as the persistent component of measured inflation that excludes volatile and controlled prices. It reflects the normal supply and demand conditions in the economy. Core inflation is computed by the following three methods:

- a) Non-food, Non-energy inflation (NFNE inflation); it is computed by excluding food group and energy items (kerosene oil, petrol, diesel, CNG, electricity and natural gas) from the CPI basket.
- b) 20% trimmed-mean inflation; it is computed through the following steps:

steps:

- i. All CPI items are arranged in ascending order according to YoY/12-month moving average/monthly/period average changes in their price indices in a given month.
- ii. 20 percent of the items showing extreme changes are excluded with 10 percent of the items at the top of the list (corresponding to cumulative weight of 90% or more) and 10 percent of the items at the bottom of the list (corresponding to cumulative weight of 10 percent or less).
- iii. The weighted mean of the changes in price indices of the rest of the items is core inflation.

- c) Relatively Stable Component of CPI (RSC-CPI) developed by State Bank of Pakistan is a hybrid method based on permanent exclusion criteria. Volatile price items, to be excluded in the newly proposed

measure RSC-CPI, are identified by analyzing the list and frequency of commodities that have been trimmed frequently in the past while computing monthly weighted trimmed mean measure. Commodities that were trimmed out 13 and above times since July 2008 to February 2013 are selected for permanently excluding from the CPI basket. This newly developed component includes a mix of both food and non-food commodities that show persistent price behavior. Fifty Commodities included comprise relatively stable component (RSC-CPI) with a weight of 67.69. The detailed methodology of RSC-CPI and group wise items along their weights can be viewed at the following link;

<http://www.sbp.org.pk/publications/wpapers/2013/wp66.pdf>

9. Weighted contribution of different items (or sub-groups) to total inflation is worked out as below:

Let the overall index (I_t) is the weighted average of price indexes of individual items or sub-groups (I_{it}), i.e.

$$I_t = \sum_i w_i \cdot I_{it}$$

The weighted contribution of a single item (or a sub-group) to overall inflation is defined as below:

$$C_{it} = \alpha_{it-12} \cdot w_i \cdot \left(\frac{\pi_{it}}{\pi_t} \right)$$

Where C_{it} : Contribution of i^{th} item to the overall inflation

$$\alpha_{it-12} = \frac{I_{it-12}}{I_{t-12}}; \text{ i.e. ratio of item's index to overall index in the}$$

reference month

w_i : Weights of i^{th} item

π_{it} : Inflation of i^{th} item

π_t : Overall inflation

10. Annualized rate of inflation (based on a month-on-month rate π) is computed as follows

$$\text{Annualized } \pi = \left(\left(1 + \frac{\pi}{100} \right)^{12} - 1 \right) \times 100$$

Methodology for Estimating Inflation Diffusion Index for Pakistan

We constructed an index to measure the spread of inflation in the 487 commodities of the CPI basket. It is based on month-on-month (MoM) change in the prices of these commodities and can be obtained by estimating what is known as an ‘inflation diffusion index’ (IDI) as below:

$$\frac{\text{Number of Commodities with } \uparrow \text{ in MoM change} - \text{Number of Commodities with } \downarrow \text{ in MoM change}}{\text{Number of Commodities for which prices are reported}}$$

Thus, it is the difference between the share of items with increasing prices (i.e. depicting inflation) and the share of items with falling prices (i.e. depicting deflation) in CPI amongst the commodities for which prices have altered or remained constant¹.

Based upon commodity level price data from July 2001 to February 2011 we computed inflation diffusion indices overall (general) CPI basket and for all groups in CPI basket (except House Rent Index being single item). A simple analysis² suggests that IDI is a leading indicator for Pakistan’s YoY inflation.

¹ We do not observe the prices of certain commodities (like the seasonal items) during certain periods of time. To calculate the inflation diffusion index we consider the commodities for which prices have been reported (irrespective of changed or not) during the month under review.

² Formal test shows one way ‘Granger’ causality from IDI to YoY inflation.