

Inflation Monitor

August 2014



State Bank of Pakistan

Statistics & DWH Department

ISSN 1992-8327 (print)

ISSN 1992-8335 (online)

The analysis in this document is based on data

- Provided by Pakistan Bureau of Statistics (PBS), for domestic inflation analysis
- Retrieved from IMF & World Bank websites for global inflation analysis

http://www.sbp.org.pk/publications/inflation_Monitor

Contents		Page
1.	Inflation in Brief	1
2.	City- wise Inflation	7
3.	Income Group- wise Inflation	8
4.	Weighted Contribution	10
5.	Inflation Diffusion Index	11
6.	Domestic Commodity Prices	12
7.	Global Commodity Prices	12
8.	Seasonal Adjustment in CPI	13
Annexure A		
Table A1	CPI Inflation by Groups	17
Table A2	Distribution of Price Changes (YoY) of CPI Basket	17
Table A3	Top and Bottom 15 Contributors to CPI Inflation (YoY)	18
Table A3.1	Top and Bottom 15 Contributors to CPI Inflation (MoM)	19
Table A3.2	Top Fifteen Contributors to CPI Inflation (YoY)	20
Table A3.3	Top Ten Contributors to CPI Food Inflation (YoY)	21
Table A3.4	Top Ten Contributors to CPI Non-Food Inflation (YoY)	22
Table A4	Distribution of Price Changes (YoY) - Selected CPI Items	23
Table A5	City-wise CPI Inflation by Income Groups	24
Table A6	City- wise CPI Inflation (YoY)	25
Table A7	Income Group-wise Inflation	26
Table A8	SPI Item-wise Price Movements	27
Table A9	Distribution of Price Changes (YoY)-WPI Items	28
Table A10	Consumer Price Index Numbers by Major Groups and Composite Commodities	29-30
Table A11	Wholesale Price Index Numbers by Major Groups and Composite Commodities	31-32
Table A12	Price Indices	33
Table A13	International Commodity Prices/ Indices	34
Table A14	CPI Data Series- Original and Seasonally Adjusted	35
Table A15	CPI Food Data Series- Original and Seasonally Adjusted	36
Table A16	CPI Monthly & Average Seasonal Factors	37
Table A17	CPI Food Monthly & Average Seasonal Factors	37
Table A18	CPI Month-on-Month % Change- Original & Seasonally Adjusted	38
Table A19	CPI Food Month-on-Month % Change- Original & Seasonally Adjusted	39
Figure A1	CPI Non-food Inflation	40
Figure A2	Frequency Distribution of Price Changes of CPI Items	41
Figure A3	Frequency Distribution of Price Changes of WPI Commodities	42
Figure A4	Group- wise/ overall Inflation Diffusion Index and Respective/ Overall YoY Inflation	43
Annexure B	Technical Notes	44-47

Team Leader

- Behzad Ali Ahmad
Sr. Joint Director
behzad.ali@sbp.org.pk

Team Members

- Muhammad Ashfaq
Deputy Director
muhammad.ashfaqch@sbp.org.pk
- Syed Salman Bukhari
Assistant Director
salman.bukhari@sbp.org.pk

Review

Inflation in Brief

1. Headline CPI inflation (2007-08=100) is recorded at 7.0 percent on year-on-year basis in August 2014 as compared to 7.9 percent in the previous month and 8.5 percent in the corresponding month of last year.
2. CPI inflation on month-on-month basis is recorded at 0.3 percent in August 2014 as compared to 1.7 percent in the previous month and 1.2 percent during the corresponding month of last year. Seasonally adjusted month-on-month CPI inflation is recorded at -0.1 percent in August 2014 compared to 0.9 percent in the previous month.
3. Core inflation (trimmed) on year-on-year basis decreased to 7.1 percent in August 2014 as compared to 7.6 percent in the previous month and 7.9 percent during the corresponding month of last year.
4. On month-on-month basis, the Core inflation (trimmed) is recorded at 0.2 percent in August 2014 as compared to 0.8 percent in the previous month and 0.6 percent during the corresponding month of last year.
5. Non-food, non-energy inflation measured by CPI Core (NFNE) on year-on-year basis decreased to 7.8 percent in August 2014 as compared to 8.3 percent in the previous month. It was 8.5 percent in the corresponding month of last year.
6. Core NFNE inflation on month-on-month basis decreased to 0.2 percent in August 2014 as compared to 1.1 percent in the previous month. A 0.6 percent increase in Core NFNE index was observed in August 2013.
7. WPI inflation on year-on-year basis decreased to 3.3 percent in August 2014 when compared to 6.6 percent a month earlier. During August 2013, WPI inflation was recorded at 8.3%.

8. WPI inflation on month-on-month basis is recorded at -0.5 percent in August 2014 as compared to 0.5 percent in the previous month and 2.6 percent during the corresponding month of last year.
9. SPI inflation on year-on-year basis decreased to 6.8 percent in August 2014 as compared to 7.6 percent in the previous month. It was 9.0 percent in the corresponding month of last year.
10. SPI inflation on month-on-month basis is recorded at 0.4 percent in August 2014 as compared to 1.8 percent in the previous month and 1.2 percent in the corresponding month of last year.

1.1 A New Measure of Core Inflation

A new method of permanently excluding relatively volatile commodities from CPI basket in Pakistan has been developed by SBP. This is achieved by making use of trimming approach on past data on monthly CPI changes to isolate a Relatively Stable Component of CPI (RSC-CPI) as a new measure of core inflation. This method ensures inclusion of both food and non-food commodities that show persistent price behavior in Pakistan (see technical notes for details). Developments in core inflation measured by RSC- CPI for the month of August 2014 are described below:

- Core inflation based on new measure RSC on year-on-year basis is recorded at 8.0 percent in August 2014 compared to 8.4 percent in the previous month and corresponding month of last year.
- Core RSC inflation on month-on-month basis is recorded at 0.2 percent in August 2014 compared to 1.0 percent in the previous month and 0.6 percent in the corresponding month of last year.

Monthly CPI, WPI and SPI data is summarized in the following table.

Table 1.1 Inflation Trends (percent) (Base 2007- 08 = 100)																
Period	CPI Inflation						Core Inflation						WPI Inflation		SPI*** Inflation	
	General		Food		Non-food		NFNE*		Trimmed		RSC**					
	YoY	MoM	YoY	MoM	YoY	MoM	YoY	MoM	YoY	MoM	YoY	MoM	YoY	MoM	YoY	MoM
Aug-13	8.5	1.2	10.3	2.0	7.3	0.6	8.5	0.6	7.9	0.6	8.4	0.6	8.3	2.6	9.0	1.2
Sep-13	7.4	-0.3	7.9	-1.5	7.0	0.6	8.7	0.6	7.6	0.6	8.5	0.5	8.7	0.7	7.9	-0.1
Oct-13	9.1	2.0	9.8	1.7	8.6	2.2	8.4	0.9	9.0	0.8	8.4	0.8	9.8	1.1	10.9	2.3
Nov-13	10.9	1.3	13.0	2.6	9.4	0.3	8.5	0.4	9.2	0.4	8.5	0.3	10.4	0.2	14.6	3.4
Dec-13	9.2	-1.3	9.3	-3.3	9.1	0.2	8.2	0.2	8.7	0.4	8.4	0.3	8.9	-1.0	12.1	-1.9
Jan-14	7.9	0.5	7.2	0.0	8.4	0.9	8.1	1.0	8.2	0.6	8.1	0.8	8.1	0.5	9.5	-0.8
Feb-14	7.9	-0.3	7.6	-1.0	8.2	0.2	7.8	0.2	8.1	0.2	8.0	0.3	7.6	-0.1	9.3	-0.2
Mar-14	8.5	1.0	9.3	2.1	8.0	0.2	7.6	0.3	8.1	0.3	7.8	0.2	7.7	0.3	10.5	1.7
Apr-14	9.2	1.7	9.9	2.0	8.7	1.5	8.5	1.9	9.0	0.9	8.5	1.7	7.0	0.1	10.3	-0.1
May-14	8.3	-0.3	7.4	-1.2	9.0	0.4	8.7	0.5	8.3	0.3	8.8	0.6	7.3	-0.1	9.3	-0.9
Jun-14	8.2	0.6	7.4	1.0	8.9	0.3	8.7	0.4	7.9	0.3	9.1	0.9	7.7	1.4	8.0	1.2
Jul-14	7.9	1.7	7.0	2.7	8.5	1.0	8.3	1.1	7.6	0.8	8.4	1.0	6.6	0.5	7.6	1.8
Aug-14	7.0	0.3	5.6	0.6	8.1	0.2	7.8	0.2	7.1	0.2	8.0	0.2	3.3	-0.5	6.8	0.4
* NFNE is Non-food non-energy			** Relatively Stable Component of CPI						*** SPI for all income groups combined							

* NFNE is Non-food non-energy

** Relatively Stable Component of CPI

*** SPI for all income groups combined

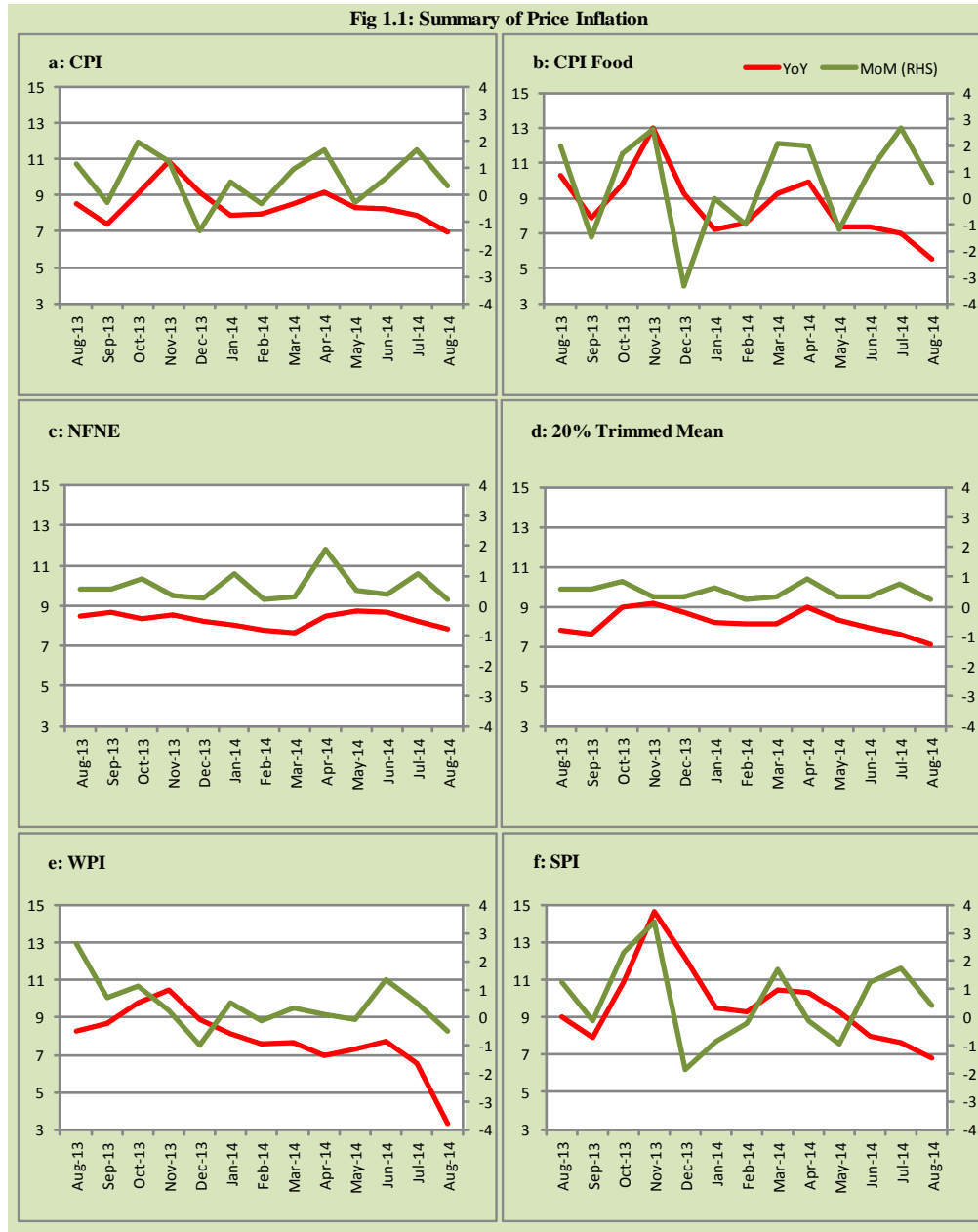
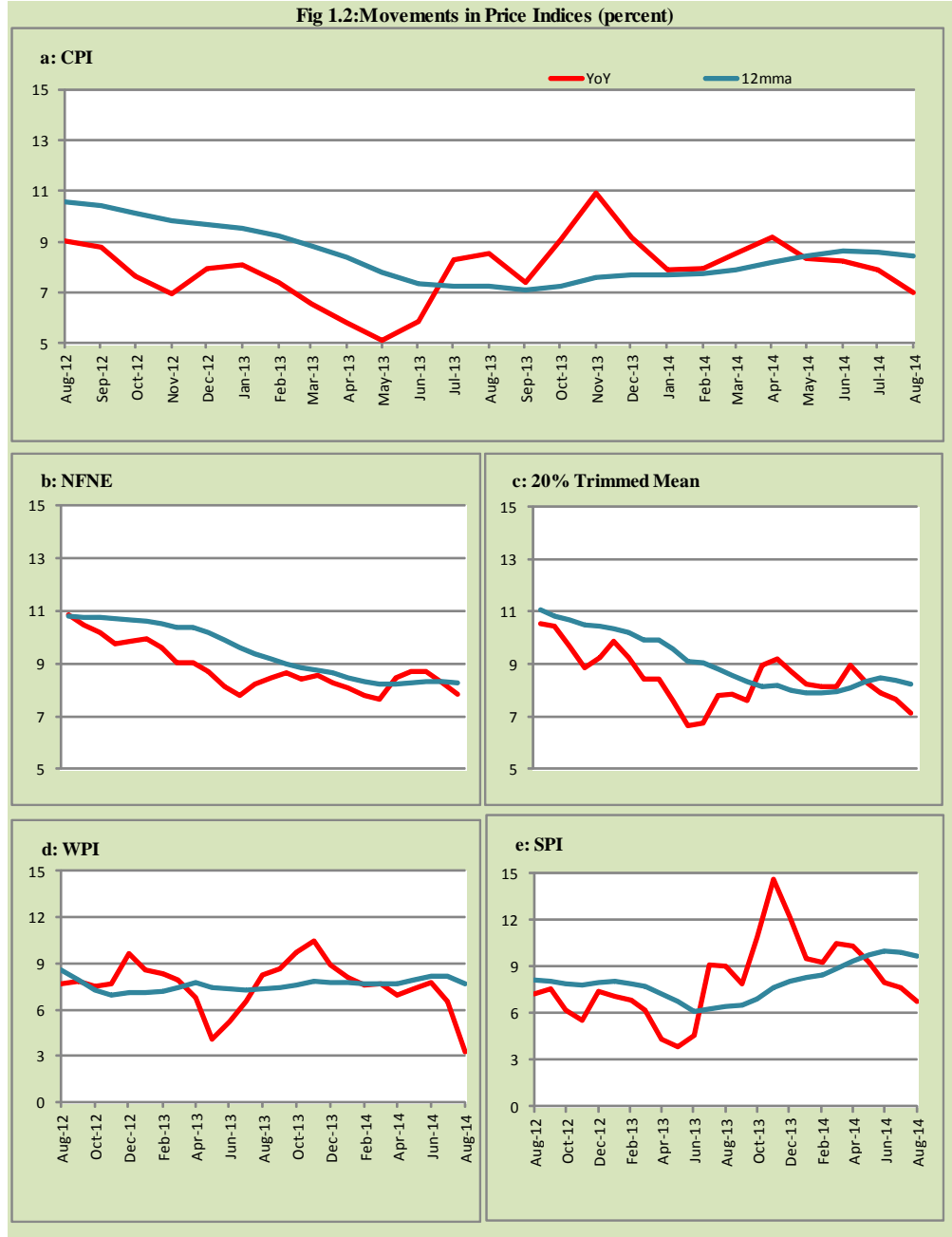


Fig 1.2: Movements in Price Indices (percent)



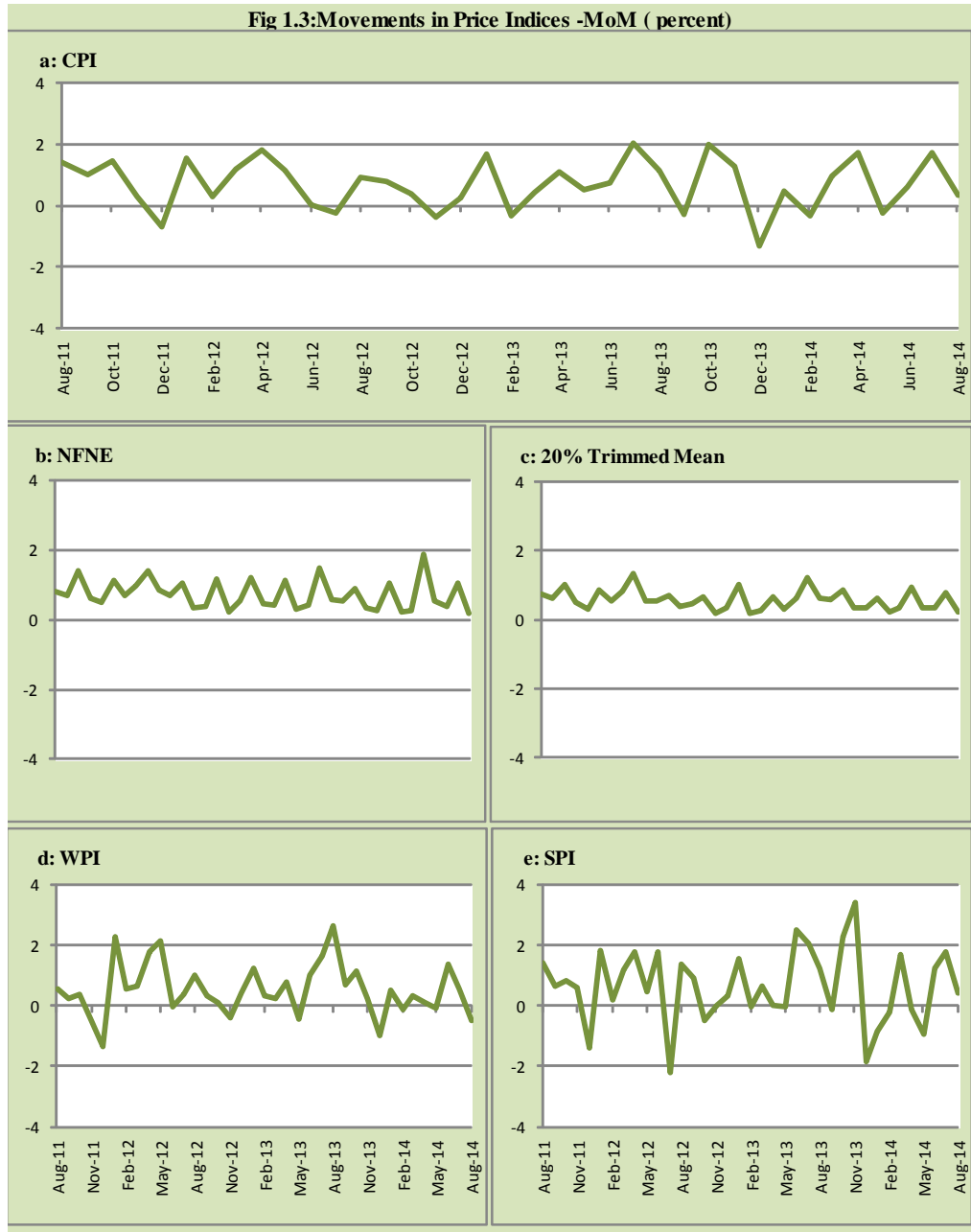
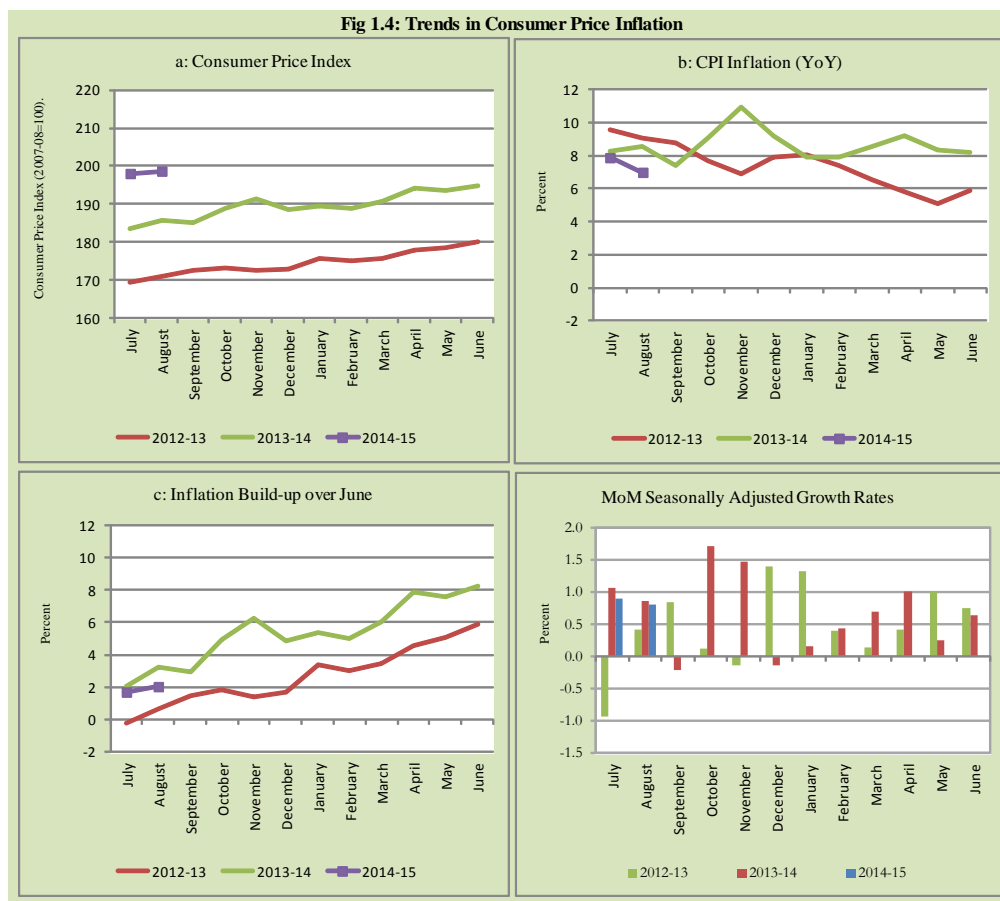


Fig 1.4: Trends in Consumer Price Inflation



2. City wise Inflation

CPI Inflation on year-on-year basis in federal and provincial capitals of Pakistan was higher than overall inflation during August 2014 except Quetta. Among these five cities, the lowest inflation was observed in Quetta at 4.9 percent while the highest inflation was observed in Islamabad at 14.2 percent (Table A6 of annexure-A).

Table 2.1 City-wise Inflation of Selected Cities (percent)						
	Aug-13		Jul-14		Aug-14	
	MoM	YoY	MoM	YoY	MoM	YoY
Overall CPI	1.2	8.5	1.7	7.9	0.3	7.0
Islamabad	1.2	7.7	1.7	14.7	0.8	14.2
Karachi	1.2	7.8	2.7	9.5	-0.2	7.9
Lahore	1.5	6.6	1.6	10.3	0.6	9.3
Peshawar	1.3	11.2	1.4	8.2	1.0	7.8
Quetta	0.4	8.7	2.2	5.7	-0.3	4.9

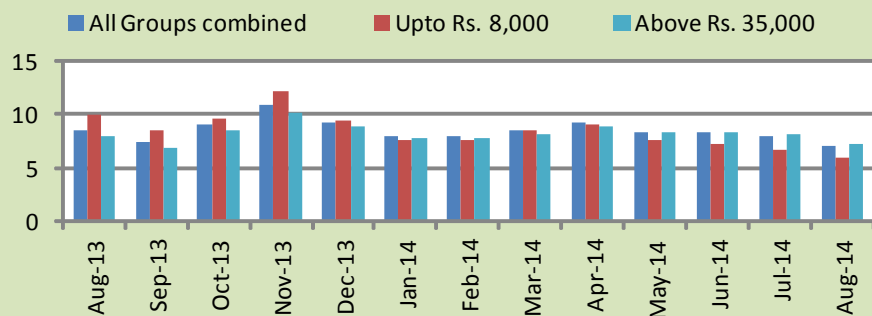
3. Income Group wise Inflation

Income group- wise data showed that income group above Rs. 35,000 witnessed lower inflation than the overall inflation in CPI basket during August 2014 for non-food group. The lowest income group (Up to Rs. 8, 000) has the lowest inflation in food group among the income groups during the month of August 2014 (Table A7 of annexure-A).

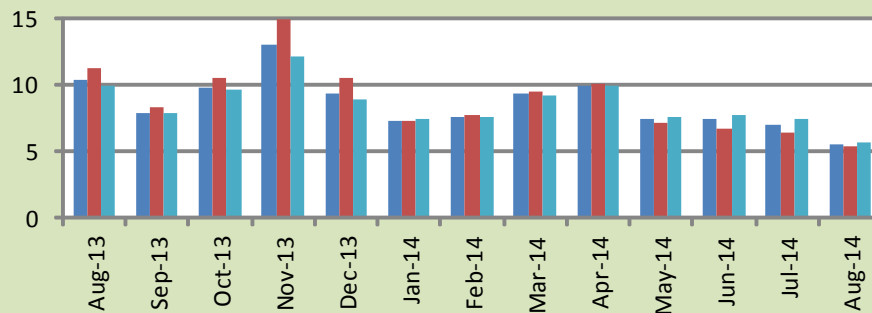
Table 3.1 Income Group- wise Inflation (YoY)									
Income Groups	General			Food			Non-food		
	Aug-13	Jul-14	Aug-14	Aug-13	Jul-14	Aug-14	Aug-13	Jul-14	Aug-14
All Groups Combined	8.5	7.9	7.0	10.3	7.0	5.6	7.3	8.5	8.1
Up to Rs. 8,000	10.0	6.7	6.0	11.2	6.4	5.3	8.4	7.2	6.8
Rs. 8,001- 12,000	9.4	6.8	6.0	10.7	6.6	5.4	8.0	7.0	6.6
Rs. 12,001- 18,000	9.1	8.0	7.1	10.5	6.8	5.5	7.7	9.1	8.7
Rs. 18,001- 35,000	8.9	8.2	7.3	10.3	7.0	5.6	7.6	9.2	8.7
Above Rs. 35,000	7.9	8.1	7.2	9.9	7.4	5.7	6.9	8.4	8.0

Fig 3.1: Income Group- wise Inflation

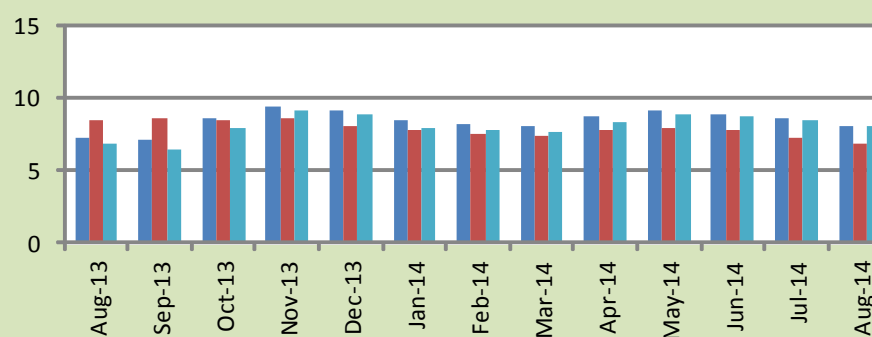
a: CPI Overall Inflation (YoY)



b: CPI Food Inflation (YoY)



c: CPI Non-Food Inflation (YoY)



4. Weighted Contribution

The weighted contribution of food group in the overall inflation decreased to 34.01 percent during August 2014 from 37.86 percent in July 2014. It was 50.74 percent in August 2013.

The weighted contribution of non-food group showed increase to touch 65.99 percent in August 2014 from 62.14 percent in July 2014.

Table 4.1 Weighted Contribution to CPI Inflation (YoY)						
Period	Food	Clothing & Footwear	Housing, Water, Elect, Gas & Other Fuel	Transport	Education	Others
Aug-13	50.74	13.02	19.40	1.98	3.35	11.51
Sep-13	44.97	14.90	22.53	0.16	3.91	13.52
Oct-13	45.18	11.62	26.61	2.68	3.37	10.55
Nov-13	50.12	9.70	22.42	6.24	2.76	8.76
Dec-13	42.35	10.02	26.60	7.26	3.33	10.44
Jan-14	38.35	11.56	30.05	5.41	3.80	10.83
Feb-14	39.62	11.30	30.01	4.66	3.59	10.82
Mar-14	45.11	10.53	27.61	3.41	2.85	10.48
Apr-14	44.99	9.50	26.89	3.49	5.60	9.53
May-14	37.10	10.81	29.55	4.60	7.03	10.91
Jun-14	37.67	10.49	29.57	3.90	7.29	11.08
Jul-14	37.86	9.99	28.62	4.75	7.38	11.40
Aug-14	34.01	10.38	31.84	4.47	7.72	11.58

5. Inflation Diffusion Index

Table 5.1 Inflation Diffusion Index - based on MoM change

	Aug-13	Sep-13	Oct-13	Nov-13	Dec-13	Jan-14	Feb-14	Mar-14	Apr-14	May-14	Jun-14	Jul-14	Aug-14
General	53.5	51.4	53.9	49.7	50.0	43.6	43.6	45.9	41.2	46.5	38.9	42.8	41.2
Food & Non-Alcoholic Beverages	39.8	36.3	57.4	49.6	41.1	29.2	38.4	59.5	23.9	33.6	25.7	43.0	39.8
Alcoholic Beverages & Tobacco	16.7	66.7	50.0	-33.3	66.7	50.0	0.0	0.0	33.3	83.3	66.7	66.7	50.0
Clothing & Footwear	76.3	83.1	78.0	83.1	76.3	78.0	71.2	52.5	67.8	67.8	57.6	64.4	50.8
Housing, Water, Elect, Gas & other Fuels	41.7	33.3	61.1	44.4	25.0	55.6	25.0	27.8	38.9	27.8	33.3	36.1	33.3
Furnishing & Household Equip. Maintenance etc	85.5	78.3	82.6	85.5	89.9	76.8	81.2	75.4	82.6	89.9	69.6	69.6	75.4
Health	28.2	10.3	17.9	15.4	20.5	5.1	10.3	28.2	25.6	25.6	17.9	23.1	12.8
Transport	39.5	53.5	48.8	30.2	34.9	32.6	37.2	25.6	16.3	9.3	18.6	23.3	23.3
Communication	33.3	16.7	16.7	25.0	16.7	0.0	16.7	16.7	-8.3	16.7	8.3	16.7	16.7
Recreation & Culture	41.0	33.3	23.1	20.5	33.3	20.5	15.4	7.7	30.8	23.1	20.5	0.0	17.9
Education	68.8	56.3	25.0	0.0	37.5	25.0	0.0	12.5	31.3	62.5	68.8	37.5	25.0
Restaurant & Hotels	100.0	100.0	83.3	83.3	100.0	100.0	100.0	100.0	66.7	100.0	50.0	50.0	66.7
Miscellaneous	65.7	74.3	40.0	62.9	57.1	48.6	62.9	62.9	48.6	65.7	54.3	60.0	60.0
NFNE	58.6	55.9	51.8	52.4	53.3	48.5	46.7	42.6	48.5	51.2	43.5	43.5	42.0

See annexure B (Technical Notes) for the definition of Inflation Diffusion Index.

6. Domestic Commodity Prices

Table 6.1 Inflation in Domestic CPI Food Commodities

Sr. No	Item	Unit	Aug-13		Jul-14		Aug-14	
			YoY	MoM	YoY	MoM	YoY	MoM
1	Wheat	10 Kg	26.78	4.94	4.26	1.38	2.22	2.88
2	Wheat Flour Bag	10 Kg	27.16	5.23	4.56	0.31	3.31	3.98
3	Rice Basmati Sup. Qlty.	Kg	18.57	1.08	6.16	0.43	5.21	0.17
4	Pulse Masoor (Washed)	Kg	9.92	-0.23	14.80	-0.54	15.04	-0.03
5	Pulse Moong (Washed)	Kg	3.43	-0.29	27.17	0.16	21.54	-4.70
6	Pulse Mash (Washed)	Kg	-3.39	0.02	11.70	-0.22	16.61	4.41
7	Pulse Gram	Kg	-28.25	-4.71	-6.93	-1.16	-2.09	0.24
8	Vegetable Ghee (Loose)	Kg	-5.26	-0.21	1.20	-0.51	1.24	-0.16
9	Sugar Refined	Kg	-0.07	-0.40	2.73	3.05	5.23	2.02
10	Milk Fresh (Unboiled)	Ltr	7.84	1.30	7.45	0.43	6.19	0.11
11	Tea- Tapal Danedar	200 Gm	36.24	0.00	-23.38	-0.48	-23.56	-0.23
12	Beef With Bone Av. Qlty.	Kg	3.91	0.00	5.90	0.56	7.17	1.20
13	Mutton Av. Qlty.	Kg	6.83	1.02	6.14	0.02	5.78	0.68
14	Chicken Farm Broiler (Live)	Kg	26.02	12.15	-1.86	-0.08	-11.45	1.19
15	Eggs Farm	Doz	8.34	6.23	6.13	5.73	19.37	19.48
16	Potatoes	Kg	12.43	7.36	122.54	16.43	113.78	3.13
17	Onion	Kg	70.08	34.57	-7.61	18.17	-25.21	8.93
18	Tomatoes	Kg	45.05	-11.54	-48.10	43.71	-40.67	1.13
19	Ginger	Kg	40.93	3.58	100.14	-3.90	81.90	-5.86
20	Garlic	Kg	17.49	2.00	-5.59	1.50	3.38	11.69

7. Global Commodity Prices

Table 7.1 Changes in Major Global Indices (percent)

Item/ Group	Aug-13		Jul-14		Aug-14	
	YoY	MoM	YoY	MoM	YoY	MoM
Overall	0.1	1.2	-1.3	-2.2	-5.5	-3.2
Food	-5.9	-4.7	-6.3	-2.2	-5.1	-3.5
Metals	4.8	4.7	-2.2	4.3	-7.0	-0.4
Energy	1.0	2.3	-0.8	-3.3	-6.8	-3.9
Agricultural Raw Material	2.5	-1.9	1.8	-0.9	2.8	-1.0
Cotton	9.9	0.1	-9.5	-7.8	-20.2	-11.7

Source: IMF

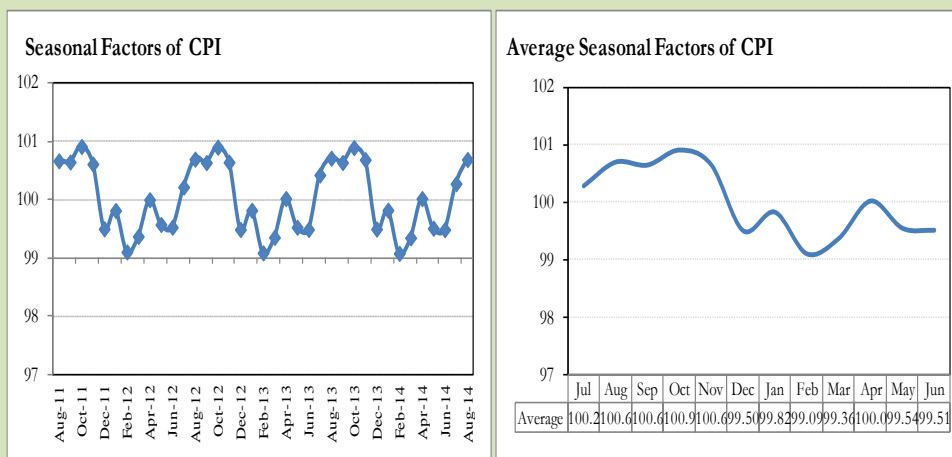
8. Seasonal Adjustment in CPI

Seasonal adjustment is the process of estimating and removing the seasonal effects from a time series after decomposing it into seasonal, trend, cycle and irregular components. The purpose is to identify the different components of the time series and thus provide a better understanding of its underlying behavior. Seasonally adjusted changes are usually preferred for analyzing general price trends in the economy because they eliminate the effect of changes that normally occur at the same time and in about the same magnitude every year. Various statistical methods can be used to decompose a time series into its constituent components. The State Bank of Pakistan uses X-12- ARIMA Seasonal Adjustment Method for this purpose.

The changes in consumer prices are normally reported in terms of year-on-year and month-on-month basis. Seasonal adjustment is particularly useful for analyzing month-on-month changes. The monthly data series of Consumer Price Index (CPI) from July 2008 to August 2014 has been used for seasonal adjustment analysis. The seasonal analysis is carried out without taking trading-day or Islamic calendar month's effects.

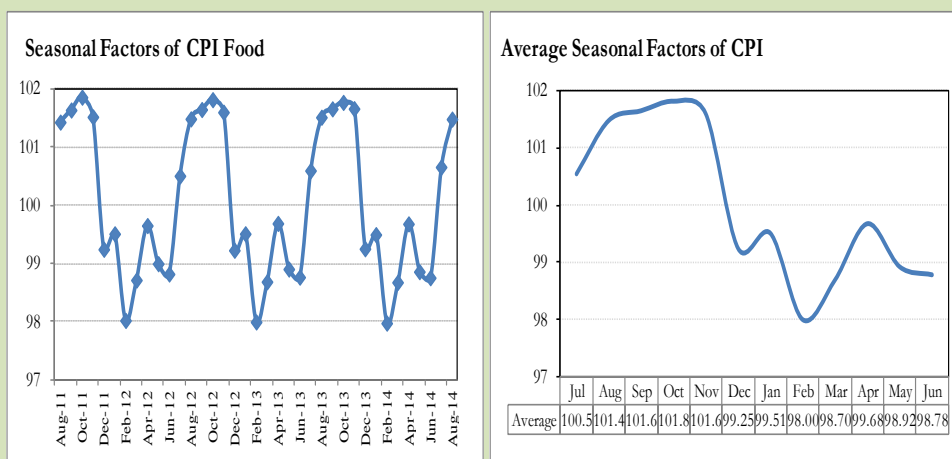
Figure 8.1 reveals that seasonality in CPI has been increasing over the period of last four years. Average seasonal factors reveal strong seasonality during the calendar year. There is an upward seasonality during the months from July to November & April and downward seasonality in the remaining months of the year. Upward and downward seasonality is above and below the trend line respectively. It is important to note that seasonal factors are estimates based on present and past experience and that future data may not necessarily show the same pattern of seasonal factors.

Fig. 8.1 Seasonal Factors of CPI



Note: Data Available in Annex Table 16.

Fig. 8.2 Seasonal Factors of CPI Food



Note: Data Available in Annex Table 17.

Figures 8.3 & 8.4 show that seasonally adjusted series are relatively smoother than the original series due to the removal of the seasonal variations. The trend follows the long-term movement in original series, and is smoother than the original series because some irregular fluctuations have been removed.

Fig. 8.3 Seasonal Plots of CPI

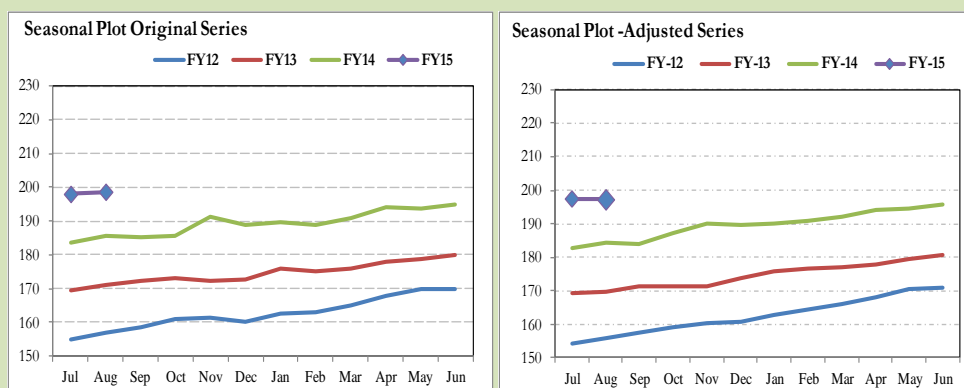
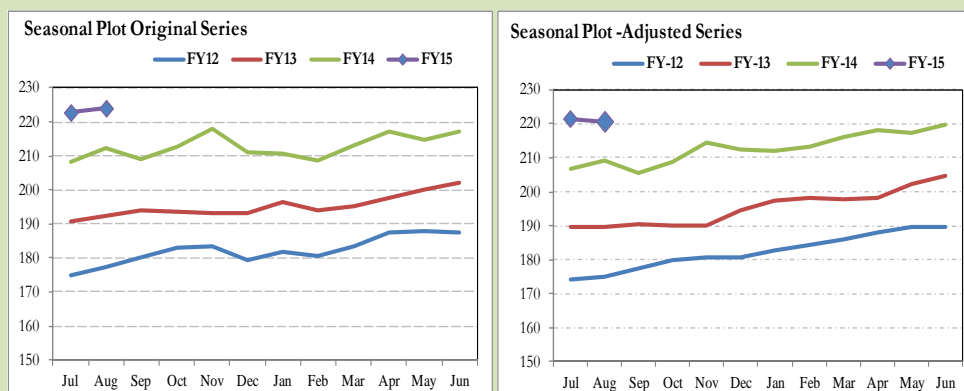


Fig. 8.4 Seasonal Plots of CPI (Food)



Seasonally adjusted CPI for August 2014 stood at 197.33 against 198.70 in original series showing a decrease of 1.37 on account of adjustment of upward seasonality in August 2014.

Seasonally adjusted CPI food group for August 2014 stood at 220.77 against 224.05 in original series showing a decrease of 3.29 on account of adjustment of upward seasonality in August 2014.

Month-on-month change of seasonally adjusted CPI series stood at -0.08% reflecting decrease during August 2014 over July 2014 and an increase of 0.33% in original series.

Month-on-month change of seasonally adjusted CPI food group series stood at -0.26% reflecting decrease during August 2014 over July 2014 and an increase of 0.56% in original series.

It is important to note that inflation rates should be analyzed on the basis of seasonally adjusted rates. This is especially needed for inflation rates on month-on-month basis. The most recent annual rate of inflation is usually indicated by annualizing the seasonally adjusted month-on-month rate. Annualized rate of CPI inflation in August 2014 (corresponding to the seasonally adjusted month-on-month rate) is -1.00 percent.

Fig. 8.5 Month-on-Month Percent Changes in CPI

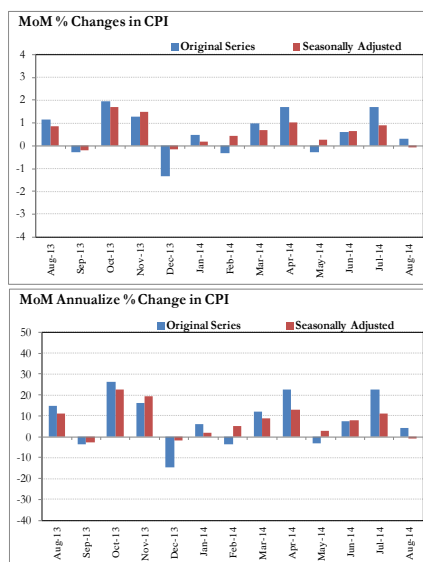
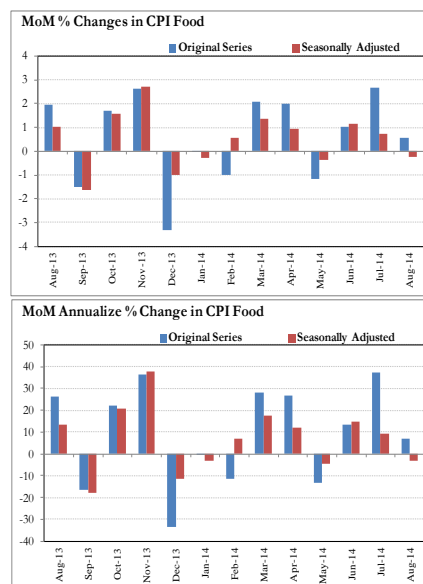


Fig. 8.6 Month-on-Month Percent Changes in CPI Food



Annexure A

Table A1: CPI Inflation by Groups (percent)							
	Weight	MoM change			YoY change		
		Aug-13	Jul-14	Aug-14	Aug-13	Jul-14	Aug-14
I. Food Group	37.5	2.0	2.7	0.6	10.3	7.0	5.6
Food & Non-Alcoholic Beverages	34.8	2.1	2.8	0.6	10.1	6.2	4.7
Alcoholic Beverages & Tobacco	1.4	0.0	2.5	0.3	14.5	22.2	22.6
Restaurant & Hotels	1.2	1.1	0.2	0.3	10.1	11.9	10.9
II. Non-Food Group	62.5	0.6	1.0	0.2	7.3	8.5	8.1
Clothing & Footwear	7.6	1.0	1.2	0.3	15.0	10.0	9.3
Housing, Water, Elect, Gas & other Fuels	29.4	0.0	1.2	0.0	6.5	8.9	8.9
Furnishing & Household Equip. Maintenance etc	4.2	0.9	0.2	0.5	8.6	9.2	8.7
Health	2.2	0.5	0.4	0.0	6.5	7.4	6.8
Transport	7.2	1.0	1.6	0.2	2.2	5.1	4.2
Communication	3.2	0.0	0.0	0.0	4.9	0.2	0.1
Recreation & Culture	2.0	1.6	0.0	0.1	9.7	5.8	4.3
Education	3.9	1.1	0.2	0.1	8.1	16.5	15.3
Miscellaneous	2.8	1.6	0.9	0.8	6.0	8.0	7.1
Headline	100.0	1.2	1.7	0.3	8.5	7.9	7.0

Table A2: Distribution of Price changes (YoY) of CPI basket											
Groups	% changes	No. of items in each inflation range									
		Total number of items		Decrease or no change (0% or less)		Subdued increase (>0% but <5%)		Moderate increase (5% but less than 10%)		Double digit increase (10% or more)	
		Aug-13	Aug-14	Aug-13	Aug-14	Aug-13	Aug-14	Aug-13	Aug-14	Aug-13	Aug-14
I. Food Group	5.6	128	128	28	24	17	21	34	32	49	51
Food & Non-Alcoholic Beverages	4.7	116	116	28	24	17	21	29	28	42	43
Alcoholic Beverages & Tobacco	22.6	6	6	0	0	0	0	2	2	4	4
Restaurant & Hotels	10.9	6	6	0	0	0	0	3	2	3	4
II. Non-Food Group	8.1	348	348	53	76	64	70	121	115	110	87
Clothing & Footwear	9.3	59	59	3	8	3	2	14	23	39	26
Housing, Water, Elect, Gas & other Fuels	8.9	36	36	6	9	4	1	19	19	7	7
Furnishing & Household Equip. Maintenance etc	8.7	69	69	0	1	13	14	39	29	17	25
Health	6.8	39	39	17	20	6	7	7	5	9	7
Transport	4.2	43	43	12	15	11	16	17	8	3	4
Communication	0.1	12	12	2	7	3	3	3	2	4	0
Recreation & Culture	4.3	39	39	8	12	12	13	6	11	13	3
Education	15.3	16	16	1	1	5	3	6	4	4	8
Miscellaneous	7.1	35	35	4	3	7	11	10	14	14	7
Overall	7.0	476	476	81	100	81	91	155	147	159	138

Note: Prices of 11 seasonal items were not reported during the month.

Table A3: Top and Bottom 15 Contributors to CPI Inflation (YoY) in August 2014					
Top 15 Contributors		YoY Change		Weighted Contribution	
Items/ Contributors	Weights	Aug-13	Aug-14		
Ranked by Weighted Contribution					
1	House Rent	21.81	8.19	7.81	19.45
2	Electricity	4.40	0.00	15.82	10.52
3	Potatoes	0.47	12.43	113.78	9.33
4	Education	3.94	8.09	15.31	7.72
5	Milk Fresh	6.68	7.68	6.44	7.60
6	Cigarette	1.39	14.65	22.78	5.32
7	Fresh Vegetable	1.68	27.18	14.98	4.26
8	Cotton Cloth	1.73	14.94	15.16	3.62
9	Meat	2.43	4.88	6.70	2.83
10	Wheat Flour	4.16	27.07	3.85	2.64
11	Ready Made Food	1.23	10.05	10.88	2.23
12	Beverages	1.20	10.68	10.55	1.84
13	Personal Care	1.49	6.52	8.38	1.80
14	Household Servant	1.04	10.07	11.20	1.80
15	Transport Services	2.70	1.71	4.17	1.77
Total		56.37			82.72
Bottom 15 Contributors					
1	Tomatoes	0.44	45.05	-40.67	-3.94
2	Onion	0.53	70.08	-25.21	-3.48
3	Tea	0.84	25.02	-18.23	-2.97
4	Chicken	1.36	26.03	-11.45	-2.74
5	Footwear	1.55	18.51	-3.07	-0.62
6	Fresh Fruits	1.86	-4.37	-1.17	-0.38
7	Pulse Gram	0.24	-28.25	-2.09	-0.06
8	Besan	0.15	-25.99	-2.76	-0.06
9	Gram Whole	0.16	-21.24	-0.98	-0.02
10	Gur	0.02	21.69	-4.15	-0.02
11	Kerosene Oil	0.01	10.76	-0.59	0.00
12	Gas	1.58	7.05	0.00	0.00
13	Postal Services	0.07	25.98	0.06	0.00
14	Medical Equipment	0.01	7.24	7.16	0.01
15	Mustard Oil	0.10	-1.52	0.84	0.01
Total		8.91			-14.28

Table A3.1: Top and Bottom 15 Contributors to CPI Inflation (MoM) in August 2014

<u>Top 15 Contributors</u>		<u>MoM Change</u>		Weighted Contribution	
Items/ Contributors	Weights	Jul-14	Aug-14		
Ranked by Weighted Contribution					
1	Fresh Vegetable	1.68	10.96	12.55	72.92
2	Wheat Flour	4.16	0.47	3.51	48.25
3	Egg	0.46	5.73	19.48	24.20
4	Onion	0.53	18.17	8.93	16.92
5	Potatoes	0.47	16.43	3.13	10.65
6	Meat	2.43	0.37	1.03	9.16
7	Sugar	1.04	3.05	2.02	6.54
8	Chicken	1.36	-0.08	1.19	4.98
9	Personal Care	1.49	0.53	1.08	4.96
10	Milk Fresh	6.68	0.42	0.17	4.21
11	Household Servant	1.04	0.07	1.06	3.72
12	Motor Vehicle	0.66	0.23	1.94	3.17
13	Wheat	0.35	1.38	2.88	3.13
14	Pulse Mash (Washed)	0.21	-0.22	4.40	2.97
15	Tailoring	0.88	2.58	0.85	2.92
Total		23.46			218.70
Bottom 15 Contributors					
1	Fresh Fruits	1.86	15.22	-17.54	-137.66
2	Pulse Moong	0.23	0.16	-4.70	-5.10
3	Fish	0.30	-0.25	-2.24	-2.27
4	Dry Fruits	0.25	1.33	-0.58	-0.54
5	Besan	0.15	-1.56	-0.83	-0.33
6	Tea	0.84	-0.31	-0.10	-0.26
7	Communication & Apparatus	3.15	-0.02	-0.02	-0.15
8	Gram Whole	0.16	-0.35	-0.08	-0.04
9	Woolen Readymade Garments	0.40	0.00	0.00	0.00
10	Gas	1.58	0.00	0.00	0.00
11	Electricity	4.40	0.00	0.00	0.00
12	Water Supply	0.50	0.00	0.00	0.00
13	News Papers	0.19	0.00	0.00	0.00
14	Blades	0.03	0.11	0.00	0.00
15	Doctor (MBBS) Clinic Fee	0.59	0.75	0.00	0.00
Total		14.64			-146.33

Table A3.2: Top Fifteen Contributors to CPI Inflation (YoY) in August 2014					
Items/ Contributors		Weights	YoY Change		Weighted Contribution
			Aug-13	Aug-14	
A. Ranked by Percentage Change					
1	Potatoes	0.47	12.43	113.78	9.33
2	Motor Vehicle Tax	0.11	1.13	36.71	0.48
3	Cigarette	1.39	14.65	22.78	5.32
4	Pulse Moong	0.23	3.42	21.55	0.92
5	Egg	0.46	8.34	19.37	1.21
6	Pulse Mash (Washed)	0.21	-3.39	16.61	0.50
7	Milk Powder	0.11	6.11	16.52	0.28
8	Electricity	4.40	0.00	15.82	10.52
9	Education	3.94	8.09	15.31	7.72
10	Cotton Cloth	1.73	14.94	15.16	3.62
11	Fresh Vegetable	1.68	27.18	14.98	4.26
12	Pulse Masoor	0.27	9.85	14.90	0.49
13	Condiments	0.27	2.73	14.35	0.64
14	Honey	0.04	8.34	13.94	0.12
15	Woolen Readymade Garments	0.40	19.21	13.45	0.79
Total		15.71			46.19
B. Ranked by Weights					
1	House Rent	21.81	8.19	7.81	19.45
2	Milk Fresh	6.68	7.68	6.44	7.60
3	Electricity	4.40	0.00	15.82	10.52
4	Wheat Flour	4.16	27.07	3.85	2.64
5	Education	3.94	8.09	15.31	7.72
6	Communication & Apparatus	3.15	4.32	0.14	0.04
7	Motor Fuel	3.03	0.89	3.00	1.29
8	Transport Services	2.70	1.71	4.17	1.77
9	Meat	2.43	4.88	6.70	2.83
10	Vegetable Ghee	2.07	-4.86	1.25	0.31
11	Fresh Fruits	1.86	-4.37	-1.17	-0.38
12	Cooking Oil	1.75	-2.42	1.08	0.23
13	Cotton Cloth	1.73	14.94	15.16	3.62
14	Fresh Vegetable	1.68	27.18	14.98	4.26
15	Rice	1.58	13.21	2.41	0.56
Total		63.00			62.47
Note: Weighted contribution is estimated by multiplying the weights by the price change of an item; this is then reported as a share in YoY change in CPI, which is 7.0 percent in August, 2014.					

Table A3.3: Top Ten Contributors to CPI Food Inflation (YoY) in August 2014

Items/ Contributors		Weights	YoY Change		Weighted Contribution
			Aug-13	Aug-14	
A. Ranked by Weighted Contribution					
1	Potatoes	0.47	12.43	113.78	9.33
2	Milk Fresh	6.68	7.68	6.44	7.60
3	Cigarette	1.39	14.65	22.78	5.32
4	Fresh Vegetable	1.68	27.18	14.98	4.26
5	Meat	2.43	4.88	6.70	2.83
6	Wheat Flour	4.16	27.07	3.85	2.64
7	Ready Made Food	1.23	10.05	10.88	2.23
8	Beverages	1.20	10.68	10.55	1.84
9	Bakery & Confectionary	1.16	9.34	10.08	1.67
10	Egg	0.46	8.34	19.37	1.21
Total		20.85			38.93
B. Ranked by Percentage Change					
1	Potatoes	0.47	12.43	113.78	9.33
2	Cigarette	1.39	14.65	22.78	5.32
3	Pulse Moong	0.23	3.42	21.55	0.92
4	Egg	0.46	8.34	19.37	1.21
5	Pulse Mash (Washed)	0.21	-3.39	16.61	0.50
6	Milk Powder	0.11	6.11	16.52	0.28
7	Fresh Vegetable	1.68	27.18	14.98	4.26
8	Pulse Masoor	0.27	9.85	14.90	0.49
9	Condiments	0.27	2.73	14.35	0.64
10	Honey	0.04	8.34	13.94	0.12
Total		5.13			23.06
C. Ranked by Weights					
1	Milk Fresh	6.68	7.68	6.44	7.60
2	Wheat Flour	4.16	27.07	3.85	2.64
3	Meat	2.43	4.88	6.70	2.83
4	Vegetable Ghee	2.07	-4.86	1.25	0.31
5	Fresh Fruits	1.86	-4.37	-1.17	-0.38
6	Cooking Oil	1.75	-2.42	1.08	0.23
7	Fresh Vegetable	1.68	27.18	14.98	4.26
8	Rice	1.58	13.21	2.41	0.56
9	Cigarette	1.39	14.65	22.78	5.32
10	Chicken	1.36	26.03	-11.45	-2.74
Total		24.98			20.64

Note: Weighted contribution is estimated by multiplying the weights by the price change of an item; this is then reported as a share in YoY change in CPI Food, which is 5.6 percent in August, 2014.

Table A3.4: Top Ten Contributors to CPI Non-food Inflation (YoY) in August 2014					
Items/ Contributors		Weights	YoY Change		Weighted Contribution
			Aug-13	Aug-14	
A. Ranked by Weighted Contribution					
1	House Rent	21.81	8.19	7.81	19.45
2	Electricity	4.40	0.00	15.82	10.52
3	Education	3.94	8.09	15.31	7.72
4	Cotton Cloth	1.73	14.94	15.16	3.62
5	Personal Care	1.49	6.52	8.38	1.80
6	Household Servant	1.04	10.07	11.20	1.80
7	Transport Services	2.70	1.71	4.17	1.77
8	Tailoring	0.88	15.78	10.77	1.69
9	Ready Made Garment	0.97	12.45	11.54	1.64
10	Woolen Cloth	0.88	12.23	9.70	1.36
Total		39.86			51.36
B. Ranked by Percentage Change					
1	Motor Vehicle Tax	0.11	1.13	36.71	0.48
2	Electricity	4.40	0.00	15.82	10.52
3	Education	3.94	8.09	15.31	7.72
4	Cotton Cloth	1.73	14.94	15.16	3.62
5	Woolen Readymade Garments	0.40	19.21	13.45	0.79
6	Doctor (MBBS) Clinic Fee	0.59	10.28	12.98	1.22
7	Hosiery	0.51	12.52	12.03	0.93
8	Ready Made Garment	0.97	12.45	11.54	1.64
9	Household Servant	1.04	10.07	11.20	1.80
10	Marriage Hall Charges	0.08	7.20	11.16	0.13
Total		13.77			28.85
C. Ranked by Weights					
1	House Rent	21.81	8.19	7.81	19.45
2	Electricity	4.40	0.00	15.82	10.52
3	Education	3.94	8.09	15.31	7.72
4	Communication & Apparatus	3.15	4.32	0.14	0.04
5	Motor Fuel	3.03	0.89	3.00	1.29
6	Transport Services	2.70	1.71	4.17	1.77
7	Cotton Cloth	1.73	14.94	15.16	3.62
8	Gas	1.58	7.05	0.00	0.00
9	Footwear	1.55	18.51	-3.07	-0.62
10	Personal Care	1.49	6.52	8.38	1.80
Total		45.39			45.59
Note: Weighted contribution is estimated by multiplying the weights by the price change of an item; this is then reported as a share in YoY change in CPI Non-food, which is 8.1 percent in August, 2014.					

Table A4: Distribution of Price Changes (YoY) - Selected CPI Items: August 2014

Groups	Decrease or no change	Subdued increase (Greater than 0% but less than 5%)	Moderate increase (5% but less than 10%)	Double digit increase (10% or more)
Food & Non-Alcoholic Beverages	Tomatoes, Chillies Green, Onion, Tea Lipton Yellow Label 200 Gm, Tapal Danedar Tea 200 Gm, Mango Kalmi	Rooh Afza, Beans (Lal Lobia), Rice Basmati 385/386, Wheat Flour Avg. Qty, Garlic, Wheat Flour Bag, Cumin seed White National	Toffee (Hilal), Coffee-Nescafe 75 Gm, Turai, Bananas, Rusk (Papay), Tomato Ketchup Ahmed/Mitchells, Butter Local Packed	Potatoes, Ginger, Coconut Dry Av.Qlty., Coriander Seed (Loose), Lady Finger, Pepper Black National, Pistachio Av. Qlty., Pulse Moong (Washed), Salt Powdered (National/Shan), Cold Drink (Standard Size)
Alcoholic Beverages & Tobacco			Betel Leaves, Betel Nuts	Cigarettes Capstan 20,S, Cigarettes Morven Gold 20,S, Cigarettes K-20,S, Cigarettes Gold Leaf 20,S
Clothing & Footwear	Gents Shoe, Art 1109 Servis, Child Shoe Power Lite Bata, Gents Shoes Paul Bata, Sports Shoes, Gents Spoung Chappal Bata	Pullover Ladies Oxford/Bon, Tailoring Coat-Pant Suit	Vest For Men Av.Qlty., Tailoring Charges Pant (Men), Heavy Wt Suiting Law.Pur Av. Qlty, Georgette Av.Qlty, Gloves Av.Qlty, Washing Ch. (Kamiz-Shalwar)	Lawn Printed Gul Ahmed/AI Karam, Secondhand Winter Jacket, Brassier Sup. Qty, Pullover (Gents) Others Av.Qlty, Brassier Av.Qlty, Shirting Av.Qlty., Handkerchief Avg. Qty Pak, Frock W/Wear Girls, Second-Hand Coat For Men, Shirt Boy 24"/26" Length
Housing, Water, Elect, Gas & other Fuels	Kerosene Oil, Elect. Charges Upto 50 Units, Elect. Charges 01 - 100 Units, Gas Chrg Over 100 - 200 Mmbtu	Bajree	Mason (Raj) Wage Rate, Synthetic Enemal ICI, Electrician Wage Rate(P/Pnt), Carpenter Wage Rate, Firewood Whole	Elect. Charges 301 - 1000 Units, Elect. Charges 101 - 300 Units, Elect. Charges Overall/ Combined, Elect. Charges Above 1000 Units, Timber Shesham Log, Cement Blocks (6"X8"X12"), Synthetic Enemal Robialac
Furnishing & Household Equip. Maintenance etc	Sewing Machine Needle (Singer)	S. Steel Plate Avg. Qty, Washing Soap 250 Gm, Washing Powder 1000 Grm (Express), Washing Machine (Singer)	Aluminum Cooking Pan, Bed Sheet Single Bed Sup. Qty, Tawa Iron (Medium Size) Avg. Qty, Bulb Philips 100-Watt, Gas Burner Double	Boot Polish Cherry/Kiwi 50 MI, Finis 500 MI, Cleanser Powder Vim 1000 Gms, Match Box (Small), Robin Blue (35 Gms), Chair Plastic (Chairman) Av. Qlty, Chair Shesham Wood, Boot Polish Liquid (Cherry)
Health	Hydriyllin Syrup 120 ML, Polyfax Eye Ointment, Flagyl Tab. 200 Mg., Betnovate-N Ointment 5 Gm	ECG Charges, Sugar Test (Random/Fasting), Galxos-D (450 Gm), Blood Test (Cp) Charges, Thermometer China, O.R.S. (Nimcol)	Urine Test (Dr) Charges, Saniplast (1 Putty), Cotton Bandage 2" - 4", Glycerin Small Bottle, X-Ray (Chest) Charges	Amoxil Capsule 250 Mg, Renitec Tab. 5 Mg., Jouhar Joshanda, Daonil Tab. 5 Mg., Doctor (MBBS) Clinic Fee, Betnesol Eye Drops, Calpol Syrup 60 ML
Transport	Train Fare Eco. 1-100 Km, Gas Cylinder S. Size (L.P.G), Train Fare Eco. 101-500 K, Train Fare 1st Slp. > 500	Motor Cycle Service Charges, CNG, Car Suzuki 800 CC (W/O. Ac), Bicycle With Tyres & Tube, Car Honda Civic 1500 CC	Minibus Fare Max.Within City, Suzuki Fare Maximum Within City, Tyre Car With Tube General, Car Service Charges	Car Tax For 800 Cc To 1300 CC, Minibus Fare Min.Within City, Cycle Overhauling Charges, Air Fare Economy Class
Communication	Postal Envelope Domestic, Mobile Cell Charges, Telephone Charges Local Call	Fax Charges (Local), Postal Envelope For Saudi Arabia, Mobile Set Nokia/Sony/Ericsson Av.Qlty	Telephone Set Av. Qlty, Internet Charges	
Recreation & Culture	Maths Book Ist. Year (T.B. Board), Maths Book Class V (T.B.Board), T.V. 20" Colored Sony, Video Game Sega 16 Byte, V.C.P. Panasonic/LG/National	Video Cassette Blank, Tdk/Sony, Eng. Book Ist. Yr Complete Set, Cinema A/C High Class, Tape Recorder Cassette (Blank), Urdu Book Ist Year/ Inter	Fountain Pen Hero/Wings/China, Ball Pen (Local), Pen Ink Dollor 57 MI Bottle, Pencil Goldfish/Deer, English Book Class VI, Paper Fool Scape (27"X17")	Weekly "Akhbar-e-Jahan", Maths Book Class IX or X, Urdu Book Class IX/X (T.B.Board)
Education	Govt. Engg. Coll. Fee 1st Year	Coaching Fee For Class IX/ X, Coaching Charges For Class XI/ XII Science Group, Pvt Eng. College Fee (1st Year)	Govt. University Fee MSC/ MA, MBA Tuition Fee, Coaching Charges For Class XI/ XII Commerce Group	Pvt School Fee Eng. Med (Class-X), Pvt School Fee Eng. Med (Class-I), Pvt School Fee Eng. Med (Class-V), Pvt School Fee Eng. Med (Class-VI), Govt. College Fee Ist. Year
Restaurant & Hotels			Cooked Dal (Av. Hotel), Chicken Biryani Full/Double	Cooked Mutton (Av. Hotel), Bread Tandoori St. Size, Cooked Beef (Av. Hotel), Tea Prepared (Ordinary)
Miscellaneous	Silver Tezabi 24 Ct, Gold Tezabi 24 Ct, Toilet Soap Lifebuoy 140 Gms	Toothbrush Shield, Hair Color Bigen, Blade Treet Ordinary (10), Blade 7-O-Clock Steel (5)	Trunk Medium Size, Beauty Parlor Hair Style Charges, Wrist Watch Ladies Citizen, Wall Clock Quartz Av.Qlty	Purse Ladies (Leather) Av. Qlty, Artificial Jewellery Set, Haircut Charges For Men, Perfume Med. Size Medora/Broche, Shaving Charges, Suitcase Rexin (24"X16"X6")

Table A5: City- wise CPI Inflation by Income Groups, August 2014

	Up to Rs: 8000						Rs 8001- 12000					
	General		Food		Non-Food		General		Food		Non-Food	
	MoM	YoY	MoM	YoY	MoM	YoY	MoM	YoY	MoM	YoY	MoM	YoY
1 Rawalpindi	2.2	9.2	4.2	9.1	-0.3	9.4	1.9	10.0	3.9	9.8	-0.3	10.3
2 Islamabad	1.7	11.5	3.5	5.7	-0.4	19.6	1.5	11.5	3.2	6.1	-0.3	18.2
3 Lahore	1.1	8.5	1.9	8.9	-0.1	7.9	0.8	8.8	1.4	9.1	0.0	8.3
4 Gujranwala	1.1	5.3	1.9	4.2	0.0	6.7	0.9	5.3	1.6	4.5	0.1	6.2
5 Sialkot	0.8	6.4	1.3	6.8	0.1	5.7	0.4	6.2	0.6	6.7	0.2	5.6
6 Faisalabad	0.3	6.6	0.6	2.9	0.0	11.8	0.2	6.9	0.4	3.4	0.0	11.2
7 Multan	0.5	5.4	0.8	4.2	0.0	6.8	0.4	5.5	0.6	4.3	0.0	7.0
8 Sargodha	1.8	6.9	3.0	6.9	0.4	6.8	1.3	6.6	2.3	6.5	0.3	6.6
9 Bahawalpur	1.4	7.0	2.5	6.6	0.2	7.3	1.0	6.6	1.9	6.3	0.2	6.8
10 Karachi	-0.4	6.2	-0.8	4.2	0.3	9.1	-0.7	6.4	-1.5	4.7	0.2	8.6
11 Hyderabad	0.7	4.1	1.1	3.7	0.1	4.7	0.6	4.3	1.0	3.9	0.1	4.9
12 Sukkur	0.1	5.1	0.2	5.4	0.1	4.9	-0.1	5.2	-0.3	5.6	0.1	4.8
13 Larkana	-0.6	5.1	-1.1	3.4	0.1	7.2	-0.6	5.4	-1.2	3.3	0.1	7.6
14 Peshawar	1.8	7.6	2.2	6.9	1.2	8.4	1.3	7.7	1.7	7.1	1.0	8.3
15 Bannu	-0.3	3.9	-0.7	2.6	0.1	5.6	-0.2	4.7	-0.6	3.5	0.2	6.0
16 Quetta	-0.5	4.9	-0.8	5.4	0.0	4.2	-0.3	5.0	-0.6	5.7	0.0	4.1
17 Khuzdar	0.3	6.4	0.5	8.8	0.2	3.4	0.5	6.4	0.6	9.1	0.4	3.5
	Rs 12001-18000						Rs 18001-35000					
	General		Food		Non-Food		General		Food		Non-Food	
	MoM	YoY	MoM	YoY	MoM	YoY	MoM	YoY	MoM	YoY	MoM	YoY
1 Rawalpindi	1.9	10.1	3.9	9.8	0.0	10.3	1.7	10.2	3.8	10.2	0.0	10.2
2 Islamabad	1.5	12.5	3.1	6.4	0.0	19.2	1.3	14.6	3.1	7.1	-0.1	21.9
3 Lahore	0.8	9.0	1.3	9.6	0.2	8.3	0.6	9.3	1.0	9.8	0.2	8.7
4 Gujranwala	0.8	4.8	1.4	4.3	0.3	5.4	0.7	4.9	1.2	4.0	0.2	5.8
5 Sialkot	0.4	6.5	0.6	7.5	0.2	5.5	0.2	7.1	0.3	7.9	0.1	6.3
6 Faisalabad	0.2	7.6	0.3	4.0	0.0	11.6	0.0	8.4	0.1	4.6	0.0	12.1
7 Multan	0.2	5.5	0.3	4.2	0.1	6.8	0.0	5.9	0.0	3.9	0.1	7.6
8 Sargodha	1.0	6.3	1.8	6.4	0.3	6.1	0.7	6.2	1.2	6.2	0.2	6.1
9 Bahawalpur	0.9	6.6	1.6	6.2	0.3	6.9	0.6	6.1	1.2	6.4	0.1	5.8
10 Karachi	-0.9	6.6	-1.8	5.1	0.1	8.4	-0.7	7.3	-1.7	5.8	0.2	8.6
11 Hyderabad	0.5	4.2	0.8	4.2	0.2	4.3	0.5	4.9	0.8	4.7	0.2	5.1
12 Sukkur	0.0	4.8	-0.2	5.6	0.1	4.0	-0.3	4.6	-0.7	4.9	0.0	4.3
13 Larkana	-0.6	5.6	-1.2	3.4	0.0	7.8	-0.6	6.3	-1.4	3.3	0.0	8.8
14 Peshawar	1.1	7.4	1.5	7.0	0.8	7.8	0.8	8.0	1.0	7.3	0.7	8.7
15 Bannu	-0.1	4.9	-0.4	3.8	0.2	5.9	-0.1	5.9	-0.5	4.7	0.2	7.0
16 Quetta	-0.2	4.9	-0.4	5.8	0.0	3.9	-0.2	5.0	-0.5	5.6	0.0	4.5
17 Khuzdar	0.5	6.2	0.5	9.1	0.4	3.4	0.5	6.8	0.6	9.5	0.4	4.6
	Above Rs 35000						Combined					
	General		Food		Non-Food		General		Food		Non-Food	
	MoM	YoY	MoM	YoY	MoM	YoY	MoM	YoY	MoM	YoY	MoM	YoY
1 Rawalpindi	1.2	10.0	3.4	10.5	0.1	9.7	1.4	9.9	3.6	10.2	-0.2	9.7
2 Islamabad	0.7	14.4	2.4	8.2	-0.2	18.0	0.8	14.2	2.6	7.8	-0.6	19.5
3 Lahore	0.4	9.7	0.7	9.7	0.3	9.7	0.6	9.3	1.0	9.6	0.2	9.1
4 Gujranwala	0.3	4.6	0.6	3.8	0.1	5.1	0.6	4.9	1.2	4.1	0.2	5.5
5 Sialkot	0.0	6.8	-0.2	7.4	0.0	6.4	0.2	6.7	0.3	7.5	0.1	6.1
6 Faisalabad	0.0	9.6	0.0	5.2	0.0	12.2	0.1	8.3	0.2	4.3	0.0	11.4
7 Multan	-0.1	6.3	-0.4	3.5	0.0	7.7	0.1	5.9	0.1	3.9	0.0	7.4
8 Sargodha	0.3	7.0	0.7	6.2	0.2	7.3	0.8	6.6	1.6	6.5	0.4	6.6
9 Bahawalpur	0.3	6.2	0.4	5.9	0.2	6.3	0.7	6.5	1.4	6.4	0.3	6.5
10 Karachi	0.1	8.7	-1.8	7.1	1.2	9.6	-0.2	7.9	-1.7	6.2	1.0	9.3
11 Hyderabad	0.4	5.1	0.7	5.0	0.2	5.1	0.5	4.7	0.8	4.5	0.2	4.9
12 Sukkur	-0.4	4.3	-1.0	4.3	-0.1	4.3	-0.2	4.8	-0.4	5.1	0.0	4.5
13 Larkana	-0.4	7.0	-1.1	2.8	0.0	9.1	-0.5	5.9	-1.2	3.3	-0.1	7.8
14 Peshawar	0.8	7.9	0.2	7.4	1.1	8.1	1.0	7.8	1.1	7.3	1.0	8.1
15 Bannu	0.3	5.4	0.3	5.7	0.3	5.2	-0.1	5.2	-0.4	4.2	0.2	5.9
16 Quetta	-0.3	4.8	-0.7	4.9	0.0	4.8	-0.3	4.9	-0.6	5.4	0.0	4.6
17 Khuzdar	0.4	5.1	0.4	7.0	0.4	4.2	0.4	6.4	0.5	8.9	0.4	4.8

Table A6: City- wise CPI Inflation (YoY) August, 2014

City	High inflation cities			City	Low inflation cities		
	General	Food	Non-food		General	Food	Non-food
Islamabad	14.2	7.8	19.5	Sialkot	6.7	7.5	6.1
Nawabshah	10.3	5.9	13.3	Jhang	6.6	4.1	8.3
Rawalpindi	9.9	10.2	9.7	Sargodha	6.6	6.5	6.6
D.G. Khan	9.6	8.8	10.1	Rahim Yar Khan	6.5	3.9	8.5
Lahore	9.3	9.6	9.1	Bahawalpur	6.5	6.4	6.5
Sahiwal	9.1	7.4	10.2	Khuzdar	6.4	8.9	4.8
Mardan	9.0	4.2	11.8	Muzaffargarh	6.2	5.2	6.9
Faisalabad	8.3	4.3	11.4	Larkana	5.9	3.3	7.8
Karachi	7.9	6.2	9.3	Multan	5.9	3.9	7.4
Peshawar	7.8	7.3	8.1	Turbat	5.8	6.7	5.2
Mianwali	7.7	5.8	9.0	Attock	5.8	6.0	5.6
Abbotabad	7.5	8.5	6.9	Wazirabad	5.7	4.1	6.8
Mingora	7.3	6.2	8.1	Mithi	5.5	5.8	5.3
				Mir Pur Khas	5.5	5.9	5.2
				Bannu	5.2	4.2	5.9
				Dadu	5.1	4.9	5.3
				Jehlum	5.0	3.0	6.5
				Quetta	4.9	5.4	4.6
				Gawadar	4.9	5.1	4.8
				Gujranwala	4.9	4.1	5.5
				Sukkur	4.8	5.1	4.5
				Hyderabad	4.7	4.5	4.9
				Vehari	4.5	2.5	6.0
				Bahawalnagar	4.5	4.6	4.4
				Dera Mrd.Jamali	4.0	1.0	6.4
				D.I.Khan	3.7	2.1	4.9
				Loralai & Cantt	2.6	1.6	3.2

Note: High inflation refers to equal or above average inflation, and low inflation refers to below average

Table A7: Income Group-wise Inflation (percent)						
	MoM			YoY		
	Aug-13	Jul-14	Aug-14	Aug-13	Jul-14	Aug-14
<u>Up to Rs. 8000</u>						
General	1.5	1.9	0.8	10.0	6.7	6.0
Food	2.3	2.7	1.2	11.2	6.4	5.3
Non-food	0.5	1.0	0.2	8.4	7.2	6.8
<u>Rs. 8001- 12000</u>						
General	1.4	1.9	0.6	9.4	6.8	6.0
Food	2.1	2.7	0.9	10.7	6.6	5.4
Non-food	0.5	0.9	0.2	8.0	7.0	6.6
<u>Rs. 12001- 18000</u>						
General	1.3	1.8	0.5	9.1	8.0	7.1
Food	2.0	2.7	0.8	10.5	6.8	5.5
Non-food	0.5	0.9	0.1	7.7	9.1	8.7
<u>Rs. 18001- 35000</u>						
General	1.2	1.7	0.3	8.9	8.2	7.3
Food	2.0	2.7	0.6	10.3	7.0	5.6
Non-food	0.5	0.9	0.1	7.6	9.2	8.7
<u>Above Rs. 35000</u>						
General	1.0	1.6	0.2	7.9	8.1	7.2
Food	1.8	2.7	0.2	9.9	7.4	5.7
Non-food	0.6	1.0	0.2	6.9	8.4	8.0
<u>All income groups</u>						
General	1.2	1.7	0.3	8.5	7.9	7.0
Food	2.0	2.7	0.6	10.3	7.0	5.6
Non-food	0.6	1.0	0.2	7.3	8.5	8.1

Table A8: SPI Item-wise Price Movements

Sr.No.	Items	Unit	Prices Aug-14	Percentage change	
				YoY	MoM
1	Wheat	10Kg.	351.2	0.4	1.8
2	Wheat Flour Bag	10Kg.	401.6	1.5	4.0
3	Rice Basmati Broken	Kg.	74.1	0.4	0.0
4	Rice Irri-6	Kg.	54.5	1.5	-0.2
5	Bread Plain Med. Size (340-400 Gm.)	Each	40.7	11.5	0.1
6	Beef	Kg.	298.5	7.7	2.0
7	Mutton	Kg.	585.7	7.1	1.0
8	Chicken Live (Farm)	Kg.	158.6	-7.3	-3.9
9	Milk Fresh	Litr	75.4	10.4	0.5
10	Curd	Kg.	88.4	10.7	0.5
11	Milk Powdered Nido	500G	347.9	20.0	0.1
12	Egg Hen (Farm)	Doz.	103.0	20.0	16.0
13	Mustard Oil	Kg.	185.5	1.4	0.0
14	Cooking Oil (Tin)	2.5Ltr	540.3	0.7	0.0
15	Veg. Ghee (Tin)	2.5Kg.	511.8	0.6	0.0
16	Veg. Ghee Loose	Kg.	158.8	0.7	-0.4
17	Bananas	Doz.	89.2	9.9	-21.2
18	Masoor Pulse Washed	Kg.	128.7	16.6	-0.4
19	Moong Pulse Washed	Kg.	152.0	21.7	-5.0
20	Mash Pulse Washed	Kg.	155.0	19.7	3.3
21	Gram Pulse Washed	Kg.	74.0	-3.4	-0.7
22	Potatoes	Kg.	68.6	119.1	-0.2
23	Onions	Kg.	41.2	-17.1	3.8
24	Tomatoes	Kg.	47.8	-39.8	-4.5
25	Sugar	Kg.	57.8	6.5	3.4
26	Gur	Kg.	82.2	-6.5	0.9
27	Salt Powdered Loose (Lahori)	Kg.	9.9	8.3	0.0
28	Red Chilies Powder Loose	Kg.	251.4	19.1	0.7
29	Garlic	Kg.	135.9	9.3	12.3
30	Tea (Yellow Label)	200Gm.	124.2	-27.7	0.0
31	Cooked Beef Plate	Each	82.0	11.4	0.0
32	Cooked Dal Plate	Each	47.5	8.0	0.2
33	Tea Prepared (Sada)	Cup	18.5	15.1	0.4
34	Cigarettes K-2 (20'S)	20'S	45.1	20.0	0.8
35	Long Cloth (Coarse Latha)	Mtr.	199.4	16.6	0.3
36	Shirting	Mtr.	156.2	11.4	0.1
37	Lawn	Mtr.	239.2	26.0	0.6
38	Georgette (Voil Printed)	Mtr.	121.6	10.6	-0.4
39	Sandal Gents Bata	Pair	699.0	7.7	0.0
40	Chappal Spong. Bata (Gents)	Pair	179.0	0.0	0.0
41	Sandal Ladies Bata	Pair	499.0	0.0	0.0
42	Electric Charges 1-50	Unit	2.0	0.0	0.0
43	Gas Charges upto 3.3719	Mmbtu	124.2	0.0	0.0
44	Kerosene	Litr	118.6	-1.9	0.0
45	Firewood	40Kg	554.4	8.8	0.0
46	Energy Savor 14 Watts	Each	165.2	2.9	0.0
47	Washing Soap (200-250 Gm.)	Cake	24.2	8.0	0.3
48	Match Box	Each	1.7	38.7	7.8
49	Petrol	Litr	109.5	3.4	0.0
50	Diesel	Litr	110.8	-0.4	0.0
51	L.P.G.(11 Kg Cylinder.)	Each	1341.3	-7.9	1.2
52	Tele. Local Call	Call	3.9	0.0	0.0
53	Bath Soap Lifebuoy (Standard)	Cake	36.0	1.8	0.0
Maximum				119.1	16.0
Median				7.1	0.0
Minimum				-39.8	-21.2

Table A9: Distribution of Price Changes (YoY) - WPI Items: August 2014				
Groups	Decrease or no change	Subdued increase (Greater than 0% but less than 5%)	Moderate increase (5% but less than 10%)	Double digit increase (10% or more)
Agriculture Forestry & Fishery Products	Fibre Crops, Poultry, Millet/Bajra, Fish Live Fresh or Chilled, Maize, Wheat, Sugar Crops	Fresh Fruits, Hides and Fur Skins-Raw, Vegetables, Rice	Other Oil Seeds, Pulses, Raw Animal Material/Wool, Fuel Wood in Logs	Edible Roots/Potatoes, Stimulant and Spice Crops, Cotton Seeds, Sorghum/Jowar, Eggs, Unmanufactured Tobacco, Dry Fruits, Milk from Bovine Animals
Ores & Minerals, Electricity Gas & Water	Natural Gas Liquefied, Coal Not Agglomerated	Electrical Energy		Salt & Pure Sodium Chloride
Food Products, Beverages and Tobacco, Textiles, Apparel and Leather Products	Coffee and Tea, Nylon Yarn, Cotton Yarn, Other Food Products, Other Cereal Flour, Footwear, Other Leather N.E.C, Blended Yarn, Spices, Dried Fruits & Nuts, Vegetable Ghee, Sugar Confectionary, Chocolate	Ice Cream, Woven Fabrics, Sugar Refined, Fruit Juices, Wheat Flour, Mineral Water, Vegetable Oil Refined, Vegetables & Fruit Juices	Synthetic Carpets, Silk and Rayon Fabrics, Meat of Animals, Cotton Fabrics	Leather without Hairs, Woolen Carpets, Oil Cakes, Beverages, Tobacco Products, Milk and Cream in Solid Form, Blankets, Ready Made Garments, Other Fabrics, Processed Liquid Milk, Towels, Bed Sheets, Hosiery Products, Dairy Products N.E.C, Quilts
Other Transportable Goods except Metal Products, Machinery and Equipments	Furnace Oil, Diesel Oil, Soaps & Detergent, Coke, Matches	Bed Foams, Medicines, Motor Sprit, Glass Sheets, Plastic Products, Printing Paper, Auto Tyres, Fertilizers	Bricks Blocks and Tiles, Kerosene Oil, Cement, Other Glass Articles, Mobil Oil	Insecticides, Dying Materials, Pesticides, Ceramics and Sanitary, Chemicals, Timber, Hard Board, Paints & Varnishes
Metal Product Machinery & Equipment	Pig Iron, Engines and Motors, Vacuum Pumps, Concrete Mixer, Radio and Television	Motor Vehicles, Chuff Cutter, Motor Cycles, Lighting Equipments, Steel Products, Bicycles	Refrige,Wash& Sew Mach,Iron,Fan, Air Conditioners, Steel Bars & Sheets, Electrical Wires	Lathe Machines, Tractors, Cultivators, Pipe Fittings

Table A10: Consumer Price Index Numbers by Major Groups and Composite Commodities

Items and specification	Weights	Index		
		Aug-13	Jul-14	Aug-14
General	100.00	185.71	198.05	198.70
Food & Non-Alcoholic Beverages.	34.83	211.91	220.48	221.77
1 Wheat	0.35	204.43	203.12	208.97
2 Wheat Flour	4.16	213.76	214.47	222.00
3 Wheat Product	0.10	196.14	216.16	218.37
4 Besan	0.15	174.75	171.35	169.93
5 Rice	1.58	190.71	194.78	195.30
6 Cereals	0.16	223.43	237.23	237.79
7 Bakery & Confectionary	1.16	186.63	204.30	205.44
8 Nimco	0.46	210.08	232.48	234.50
9 Meat	2.43	225.95	238.64	241.09
10 Chicken	1.36	228.30	199.78	202.16
11 Fish	0.30	202.20	221.80	216.83
12 Milk Fresh	6.68	229.63	244.00	244.41
13 Milk Product	0.63	223.35	240.15	240.29
14 Milk Powder	0.11	192.47	223.66	224.27
15 Egg	0.46	177.43	177.27	211.80
16 Mustard Oil	0.10	157.73	158.40	159.06
17 Cooking Oil	1.75	160.17	161.87	161.90
18 Vegetable Ghee	2.07	155.90	157.83	157.85
19 Dry Fruits	0.25	218.07	237.98	236.61
20 Fresh Fruits	1.86	228.27	273.57	225.59
21 Pulse Masoor	0.27	156.96	180.20	180.35
22 Pulse Moong	0.23	236.45	301.58	287.40
23 Pulse Mash (Washed)	0.21	187.03	208.89	218.09
24 Pulse Gram	0.24	170.97	166.99	167.40
25 Gram Whole	0.16	180.87	179.25	179.10
26 Beans	0.03	232.00	240.10	241.77
27 Potatoes	0.47	226.71	469.93	484.66
28 Onion	0.53	335.76	230.52	251.11
29 Tomatoes	0.44	285.06	167.23	169.12
30 Fresh Vegetable	1.68	219.98	224.72	252.93
31 Sugar	1.04	195.15	201.28	205.35
32 Gur	0.02	271.23	257.03	259.98
33 Honey	0.04	256.90	288.66	292.72
34 Sweet Meet	0.25	214.63	227.84	229.38
35 Beverages	1.20	189.21	208.53	209.18
36 Jam, Tomato Ketchup & Pickle	0.25	187.53	196.07	197.56
37 Condiments	0.27	217.77	247.60	249.01
38 Spices	0.54	216.40	228.43	229.07
39 Tea	0.84	253.02	207.09	206.89
Alcoholic Beverages, Tobacco	1.41	217.51	265.82	266.59
40 Cigarette	1.39	217.97	266.88	267.63
41 Betel Leaves & Nuts	0.02	189.38	202.02	203.31
Clothing & Footwear	7.57	192.38	209.51	210.19
42 Cotton Cloth	1.73	179.59	206.19	206.81
43 Woolen Cloth	0.88	208.28	228.36	228.48
44 Ready Made Garment	0.97	189.32	210.19	211.17
45 Woolen Readymade Garments	0.40	192.45	218.34	218.34
46 Hosiery	0.51	197.66	220.45	221.44
47 Dopatta	0.44	207.23	225.70	226.08
48 Cleaning & Laundering	0.21	210.77	229.21	230.67

Table A10: Consumer Price Index Numbers by Major Groups and Composite Commodities				
Items and specification	Weights	Index		
		Aug-13	Jul-14	Aug-14
49 Tailoring	0.88	230.99	253.71	255.86
50 Footwear	1.55	169.08	163.78	163.89
Housing,Water,Elect,Gas & Other Fuel	29.41	157.59	171.62	171.65
51 House Rent	21.81	148.24	159.82	159.82
52 Construction Input Item	0.56	215.23	234.10	234.79
53 Construction Wage Rate	0.33	187.03	200.14	201.60
54 Water Supply	0.50	141.53	149.92	149.92
55 Electricity	4.40	196.37	227.44	227.44
56 Gas	1.58	143.81	143.81	143.81
57 Kerosene Oil	0.01	280.70	278.37	279.05
58 Fire Wood Whole	0.23	245.25	264.49	265.16
Furnished H.Hold Equip.& Maint. Etc	4.21	188.99	204.42	205.48
59 Furniture	0.33	178.39	195.17	196.29
60 Household Textile	0.65	183.82	199.95	200.71
61 Household Equipment	0.59	163.24	170.88	171.16
62 Utensils	0.32	187.69	206.30	206.97
63 Plastic Products	0.25	185.38	195.95	196.98
64 Washing Soap & Detergent	0.79	207.01	221.06	221.65
65 Sewing Needle & Dry Cell	0.15	168.42	182.15	182.20
66 Household Servant	1.04	199.82	219.87	222.19
67 Marriage Hall Charges	0.08	202.60	224.45	225.21
Health	2.19	162.32	173.40	173.42
68 Drug Medicine	1.27	141.30	145.59	145.60
69 Medical Equipment	0.01	205.83	220.36	220.56
70 Doctor (MBBS) Clinic Fee	0.59	207.25	234.15	234.15
71 Medical Test	0.32	161.52	170.28	170.34
Transport	7.20	190.63	198.38	198.70
72 Motor Vehicle	0.66	158.44	160.37	163.48
73 Motor Vehicle Accessories	0.24	218.09	228.75	229.13
74 Motor Fuel	3.03	184.92	190.45	190.47
75 Mechanical Service	0.46	192.91	206.25	206.40
76 Motor Vehicle Tax	0.11	153.74	210.18	210.18
77 Transport Services	2.70	203.54	212.03	212.03
Communication	3.22	129.65	129.85	129.83
78 Postal Services	0.07	215.89	215.95	216.02
79 Communication & Apparatus	3.15	127.84	128.05	128.02
Recreation & Culture	2.02	181.28	188.76	189.02
80 Recreation & Culture	0.86	124.61	127.43	127.46
81 Text Books	0.57	266.87	279.73	280.60
82 News Papers	0.19	170.49	175.42	175.42
83 Stationery	0.40	186.81	197.92	197.98
Education	3.94	166.03	191.33	191.45
84 Education	3.94	166.03	191.33	191.45
Restaurants And Hotels	1.23	216.32	239.23	239.85
85 Ready Made Food	1.23	216.32	239.23	239.85
Miscellaneous Goods And Services	2.76	204.07	216.98	218.63
86 Personal Care	1.49	187.02	200.54	202.70
87 Cosmetics	0.39	168.14	183.13	183.29
88 Blades	0.03	178.04	184.82	184.82
89 Personal Equipments	0.84	251.61	262.76	264.24

Table A11: Wholesale Price Index Numbers by Major Groups and Composite Commodities

Items and Specifications	Index		
	Aug-13	Jul-14	Aug-14
General	207.85	215.76	214.73
Agriculture Forestry & Fishery	218.23	230.64	224.73
1 Wheat	215.13	207.97	214.37
2 Maize	194.89	191.76	193.63
3 Rice	177.57	179.66	180.50
4 Sorghum/Jowar	265.69	323.08	328.11
5 Millet/Bajra	190.24	174.47	174.19
6 Vegetables	297.02	247.48	304.25
7 Fresh Fruits	245.49	321.25	256.65
8 Dry Fruits	191.77	217.95	217.97
9 Cotton Seeds	165.07	231.50	216.43
10 Other Oil Seeds	173.57	190.46	189.39
11 Edible Roots/ Potatoes	217.93	543.47	550.88
12 Stimulant And Spice Crops	241.41	460.25	429.22
13 Pulses	180.97	198.96	194.38
14 Sugar Crops	267.92	267.92	267.92
15 Fibre Crops	214.52	201.65	175.37
16 Unmanufactured Tobacco	176.34	204.74	206.81
17 Poultry	237.40	206.33	212.06
18 Milk From Bovine Animals	221.65	242.57	243.95
19 Eggs	180.14	176.03	218.87
20 Raw Animal Material/Wool	153.23	164.70	161.50
21 Hides And Fur Skins, Raw	140.87	146.12	145.14
22 Fuel Wood In Logs	231.13	243.47	243.47
23 Fishes Live Fresh Or Chilled	250.91	246.21	243.89
Ores/Minerals, Gas & Elect.	239.51	242.67	242.91
24 Coal Not Agglomerated	223.53	223.53	223.53
25 Natural Gas Liquefied	203.57	202.34	202.79
26 Salt & Pure Sodium Chloride	205.80	243.18	248.50
27 Electrical Energy	279.61	287.44	287.44
Food, Beverages, Tobacco, Textiles	197.43	205.50	207.15
28 Meat Of Animals	233.93	246.01	252.65
29 Vegetables & Fruit Juices	191.31	194.12	194.12
30 Dried Fruits & Nuts	223.20	217.80	219.98
31 Fruit Juices	165.05	171.20	171.34
32 Vegetable Oil Refined	160.13	164.33	163.56
33 Vegetable Ghee	140.30	140.35	139.94
34 Oil Cakes	174.89	232.05	212.95
35 Processed Liquid Milk	205.54	223.02	231.82
36 Milk And Cream In Solid Form	179.40	212.82	214.15
37 Ice Cream	209.53	219.91	219.91
38 Dairy Products N.E.C	212.59	235.94	235.94
39 Wheat Flour	195.91	195.47	201.98
40 Other Cereal Flour	144.64	138.16	136.37
41 Sugar Refined	211.85	216.56	220.01
42 Chocolate	99.19	99.19	99.19
43 Sugar Confectionary	102.28	102.28	102.28
44 Coffee And Tea	230.71	184.43	181.34
45 Spices	195.67	191.70	191.50
46 Other Food Products	316.68	293.72	294.38
47 Mineral Water	180.22	185.63	185.63
48 Beverages	139.63	167.46	169.18
49 Tobacco Products	242.41	290.52	290.52
50 Cotton Yarn	217.78	200.42	195.72
51 Nylon Yarn	187.63	161.40	163.67
52 Blended Yarn	198.41	193.60	193.92
53 Woven Fabrics	217.16	226.82	226.82
54 Cotton Fabrics	187.43	196.81	196.81
55 Other Fabrics	175.74	197.56	203.01

Inflation Monitor, August 2014

Table A11: Wholesale Price Index Numbers by Major Groups and Composite Commodities				
		Index		
Items and Specifications		Aug-13	Jul-14	Aug-14
56 Silk And Rayon Fabrics		160.08	165.85	175.35
57 Towels		216.98	242.19	244.18
58 Blankets		185.21	219.66	219.66
59 Bed Sheets		215.79	242.12	242.12
60 Quilts		156.32	172.42	172.42
61 Woolen Carpets		106.55	132.14	132.14
62 Synthetic Carpets		114.41	116.10	125.42
63 Hosiery Products		185.30	204.27	206.13
64 Ready Made Garments		152.13	175.43	180.12
65 Leather With Out Hairs		136.23	223.51	216.45
66 Other Leather N.E.C		238.82	249.44	230.78
67 Footwear's		139.49	134.22	134.22
Other Transportable Goods		209.59	215.63	215.17
68 Timber		160.48	184.69	184.69
69 Printing Paper		164.45	172.62	169.34
70 Hard Board		200.00	229.17	229.17
71 Coke		163.45	163.45	163.45
72 Motor Sprit		176.54	182.40	182.40
73 Diesel Oil		264.12	260.69	260.69
74 Kerosene Oil		270.07	288.01	288.01
75 Furnace Oil		172.70	173.10	169.47
76 Mobil Oil		191.04	201.17	201.17
77 Chemicals		164.53	193.10	194.21
78 Dying Materials		107.23	143.77	143.77
79 Fertilizers		269.62	268.66	270.28
80 Pesticides		212.36	262.86	270.02
81 Insecticides		124.43	181.89	181.05
82 Paints & Varnishes		247.56	275.71	276.16
83 Medicines		138.85	144.21	144.21
84 Soaps & Detergent		177.56	183.11	175.81
85 Auto Tyres		185.57	188.21	188.21
86 Plastic Products		199.06	203.08	205.01
87 Glass Sheets		203.49	209.86	209.86
88 Other Glass Articles		206.09	218.27	218.27
89 Ceramics And Sanitary		165.08	200.07	200.91
90 Bricks Blocks And Tiles		186.85	201.73	202.38
91 Cement		194.84	207.76	207.44
92 Bed Foams		144.33	150.83	150.83
93 Matches		143.20	143.20	143.20
Metal Product Machinery & Equip		166.14	171.57	172.17
94 Pig Iron		128.97	128.97	128.97
95 Steel Bars & Sheets		140.51	146.08	149.75
96 Pipe Fittings		149.13	175.34	175.34
97 Steel Products		167.61	170.24	170.24
98 Engines And Motors		109.07	109.07	109.07
99 Vacuum Pumps		115.39	115.39	115.39
100 Air Conditioners		179.78	181.12	195.53
101 Cultivators		189.23	226.90	226.90
102 Chuff Cutter		144.94	149.20	149.20
103 Tractors		161.96	214.54	214.54
104 Lathe Machines		147.68	208.81	208.81
105 Concrete Mixer		138.83	138.83	138.83
106 Refrige,Wash& Sew Mach, Iron,Fan		179.92	195.93	195.93
107 Electrical Wires		168.13	179.18	179.18
108 Lighting Equipments		162.27	164.95	164.95
109 Radio And Television		126.49	126.49	126.49
110 Motor Vehicles		173.99	182.59	182.59
111 Motor Cycles		124.80	126.70	126.92
112 Bicycles		180.99	182.84	182.84

Table A12: Price Indices - Base 2007-08 = 100

Period		CPI			WPI			SPI *
		Overall	Food	Non-food	Overall	Food	Non-Food	
2008-09		117.03	123.12	113.38	118.93	119.68	118.45	123.26
2009-10		128.85	139.05	122.73	135.40	136.85	134.48	139.84
2010-11		146.45	164.10	135.87	164.17	159.26	167.28	164.02
2011-12		162.57	182.20	150.80	181.28	181.32	181.26	178.67
2012-13		174.53	195.18	162.16	194.61	197.21	192.95	189.64
2013-14		189.58	212.74	175.69	210.48	213.04	208.85	208.66
2012	Feb	163.07	180.69	152.51	180.99	177.56	183.17	178.63
	Mar	164.98	183.46	153.90	182.20	180.41	183.34	180.79
	Apr	168.00	187.43	156.35	185.48	184.45	186.13	184.03
	May	169.93	187.75	159.25	189.46	186.57	191.29	184.88
	Jun	169.99	187.35	159.58	189.37	189.36	189.37	188.14
	Jul	169.57	190.72	156.89	190.05	193.92	187.59	183.98
	Aug	171.09	192.47	158.27	191.99	195.30	189.89	186.47
	Sep	172.44	193.80	159.64	192.66	195.81	190.66	188.21
	Oct	173.10	193.66	160.77	192.88	196.21	190.77	187.32
	Nov	172.42	193.03	160.07	192.16	193.02	191.61	187.35
	Dec	172.82	192.97	160.74	192.98	195.49	191.39	187.95
2013	Jan	175.70	196.58	163.19	195.39	198.81	193.22	190.89
	Feb	175.11	194.05	163.76	196.06	197.22	195.32	190.79
	Mar	175.82	195.06	164.29	196.57	196.02	196.92	192.01
	Apr	177.74	197.74	165.75	198.09	199.00	197.51	192.02
	May	178.65	200.00	165.85	197.23	201.14	194.75	191.96
	Jun	179.94	202.11	166.65	199.21	204.60	195.79	196.75
	Jul	183.58	208.19	168.83	202.49	209.34	198.15	200.80
	Aug	185.71	212.27	169.79	207.85	211.45	205.57	203.29
	Sep	185.18	209.09	170.85	209.33	211.29	208.09	203.05
	Oct	188.82	212.61	174.56	211.70	213.26	210.71	207.69
	Nov	191.21	218.16	175.06	212.22	215.77	209.97	214.76
	Dec	188.68	210.89	175.37	210.11	210.28	210.00	210.78
2014	Jan	189.60	210.81	176.89	211.23	209.87	212.10	208.99
	Feb	189.00	208.74	177.17	210.94	208.67	212.38	208.54
	Mar	190.82	213.11	177.46	211.66	212.89	210.88	212.08
	Apr	194.06	217.33	180.11	211.88	216.70	208.82	211.78
	May	193.55	214.75	180.84	211.71	215.95	209.02	209.80
	Jun	194.74	216.98	181.41	214.60	221.06	210.50	212.40
	Jul	198.05	222.80	183.21	215.76	225.52	209.57	216.14
	Aug	198.70	224.05	183.50	214.73	227.26	206.78	217.08

*: all groups combined

Table A13: International Commodity Prices/ Indices				
	May-14	Jun-14	Jul-14	Aug-14
Energy				
Crude Oil (US\$ per barrel) *	105.7	108.4	105.2	100.1
IMF Energy Index (2005 = 100)	193.4	197.2	190.7	183.4
WB Energy Index (2010 = 100) @	129.0	131.5	126.9	121.2
Food				
Rice (\$/MT)	403.6	414.7	428.0	440.4
Wheat (\$/MT)	334.7	306.5	280.4	263.4
Sugar (US cent/ pound)	18.2	18.1	17.2	15.9
Palm Oil (\$/MT)	800.3	758.5	752.9	677.9
Soybean Oil (\$/MT)	893.5	871.6	813.9	745.8
Non-Food Non-Energy				
Cotton Outlook 'A' Index #	92.7	90.9	83.8	74.0
IMF Metal Price Index (2005 = 100)	164.5	161.8	168.8	168.2
Copper (\$/MT)	6,891.1	6,821.1	7,113.4	7,001.8
Aluminum (\$/MT)	1,751.1	1,839.0	1,948.3	2,030.5
Iron Ore (\$ cents/dry MT)	100.6	92.7	96.1	92.6
Tin (\$/MT)	23,271.3	22,762.0	22,424.0	22,231.1
Nickle (\$/MT)	19,401.1	18,628.8	19,117.7	18,600.2
Zinc (\$/MT)	2,059.0	2,128.1	2,310.6	2,327.0
Lead (\$/MT)	2,097.3	2,106.9	2,193.2	2,236.8
Uranium (\$/MT)	28.7	28.2	28.4	30.6
DAP (\$/MT)	444.6	461.5	499.4	505.0
Urea (\$/MT)	299.1	297.9	301.7	321.9
Source: IMF and World Bank				
\$/MT = US\$ per metric ton.				
* Crude Oil (Petroleum), simple average of three spot prices; Dated Brent, West Texas Intermediate, and the Dubai fateh				
# Middling 1-3/32 inch staple, Liverpool Index "A", average of the cheapest Cts/lb five of fourteen styles, CIF Liverpool (Cotton Outlook, Liverpool). From January 1968 to May 1981 strict middling 1-1/16 inch staple. Prior to 1968, Mexican 1-1/16.2/				
DAP: Diammonium Phosphate				
@ World Bank commodity index for low and middle income countries				

Table 14. CPI Data Series Original and Seasonally Adjusted

Original Series				
Period	FY12	FY13	FY14	FY15
Jul	154.72	169.57	183.58	198.05
Aug	156.88	171.09	185.71	198.70
Sep	158.50	172.44	185.18	
Oct	160.79	173.10	188.82	
Nov	161.25	172.42	191.21	
Dec	160.12	172.82	188.68	
Jan	162.58	175.70	189.60	
Feb	163.07	175.11	189.00	
Mar	164.98	175.82	190.82	
Apr	168.00	177.74	194.06	
May	169.93	178.65	193.55	
Jun	169.99	179.94	194.74	
Seasonally Adjusted Series				
Jul	154.43	169.20	182.80	197.50
Aug	155.83	169.90	184.39	197.33
Sep	157.48	171.34	184.00	
Oct	159.33	171.55	187.14	
Nov	160.26	171.31	189.90	
Dec	160.92	173.70	189.63	
Jan	162.87	176.01	189.93	
Feb	164.54	176.71	190.75	
Mar	166.02	176.96	192.07	
Apr	167.99	177.70	194.02	
May	170.65	179.49	194.50	
Jun	170.79	180.86	195.74	

Table 15. CPI Food Data Series Original and Seasonally Adjusted				
Original Series				
Period	FY12	FY13	FY14	FY15
Jul	174.80	190.72	208.19	222.80
Aug	177.32	192.47	212.27	224.05
Sep	180.16	193.80	209.09	
Oct	183.07	193.66	212.61	
Nov	183.26	193.03	218.16	
Dec	179.21	192.97	210.89	
Jan	181.90	196.58	210.81	
Feb	180.69	194.05	208.74	
Mar	183.46	195.06	213.11	
Apr	187.43	197.74	217.33	
May	187.75	200.00	214.75	
Jun	187.35	202.11	216.98	
Seasonally Adjusted Series				
Jul	174.08	189.75	206.94	221.33
Aug	174.81	189.64	209.09	220.77
Sep	177.25	190.65	205.67	
Oct	179.72	190.20	208.90	
Nov	180.51	189.98	214.58	
Dec	180.57	194.47	212.47	
Jan	182.79	197.54	211.87	
Feb	184.33	198.01	213.05	
Mar	185.84	197.65	215.96	
Apr	188.08	198.35	218.02	
May	189.65	202.21	217.22	
Jun	189.58	204.63	219.71	

Table 16: CPI Monthly & Average Seasonal Factors					
Period	FY12	FY13	FY14	FY15	Average
Jul	100.19	100.22	100.43	100.28	100.28
Aug	100.67	100.70	100.72	100.69	100.69
Sep	100.65	100.64	100.64		100.64
Oct	100.92	100.90	100.90		100.91
Nov	100.62	100.65	100.69		100.65
Dec	99.50	99.49	99.50		99.50
Jan	99.82	99.82	99.82		99.82
Feb	99.11	99.09	99.08		99.09
Mar	99.37	99.36	99.35		99.36
Apr	100.00	100.02	100.02		100.02
May	99.58	99.53	99.51		99.54
Jun	99.53	99.49	99.49		99.51

Table 17: CPI Food Monthly & Average Seasonal Factors					
Period	FY12	FY13	FY14	FY15	Average
Jul	100.42	100.51	100.60	100.66	100.55
Aug	101.44	101.49	101.52	101.49	101.48
Sep	101.64	101.65	101.66		101.65
Oct	101.86	101.82	101.77		101.82
Nov	101.53	101.61	101.67		101.60
Dec	99.25	99.23	99.26		99.25
Jan	99.51	99.52	99.50		99.51
Feb	98.02	98.00	97.98		98.00
Mar	98.72	98.69	98.68		98.70
Apr	99.66	99.69	99.69		99.68
May	99.00	98.91	98.86		98.92
Jun	98.82	98.77	98.76		98.78

Table 18: CPI Month-on-Month % Change Original & Seasonally Adjusted				
Original Series				
Period	FY12	FY13	FY14	FY15
Jul	1.27	-0.25	2.02	1.70
Aug	1.40	0.90	1.16	0.33
Sep	1.03	0.79	-0.29	
Oct	1.44	0.38	1.97	
Nov	0.29	-0.39	1.27	
Dec	-0.70	0.23	-1.32	
Jan	1.54	1.67	0.49	
Feb	0.30	-0.34	-0.32	
Mar	1.17	0.41	0.96	
Apr	1.83	1.09	1.70	
May	1.15	0.51	-0.26	
Jun	0.04	0.72	0.61	
Seasonally Adjusted Series				
Jul		-0.93	1.07	0.90
Aug	0.91	0.42	0.87	-0.08
Sep	1.05	0.85	-0.21	
Oct	1.18	0.12	1.71	
Nov	0.59	-0.14	1.47	
Dec	0.41	1.39	-0.14	
Jan	1.22	1.33	0.16	
Feb	1.02	0.40	0.43	
Mar	0.90	0.14	0.69	
Apr	1.19	0.42	1.02	
May	1.58	1.01	0.25	
Jun	0.08	0.76	0.64	

Table 19: CPI Food Month-on-Month % Change Original & Seasonally Adjusted				
Original Series				
Period	FY12	FY13	FY14	FY15
Jul	2.90	1.80	3.01	2.68
Aug	1.44	0.92	1.96	0.56
Sep	1.60	0.69	-1.50	
Oct	1.62	-0.07	1.68	
Nov	0.10	-0.33	2.61	
Dec	-2.21	-0.03	-3.33	
Jan	1.50	1.87	-0.04	
Feb	-0.66	-1.29	-0.98	
Mar	1.53	0.52	2.10	
Apr	2.16	1.37	1.98	
May	0.17	1.15	-1.19	
Jun	-0.21	1.05	1.04	
Seasonally Adjusted Series				
Jul		0.09	1.13	0.74
Aug	0.42	-0.06	1.04	-0.26
Sep	1.39	0.53	-1.64	
Oct	1.40	-0.24	1.57	
Nov	0.44	-0.12	2.72	
Dec	0.03	2.36	-0.99	
Jan	1.23	1.58	-0.28	
Feb	0.84	0.24	0.56	
Mar	0.82	-0.18	1.37	
Apr	1.20	0.35	0.95	
May	0.83	1.95	-0.37	
Jun	-0.03	1.20	1.14	

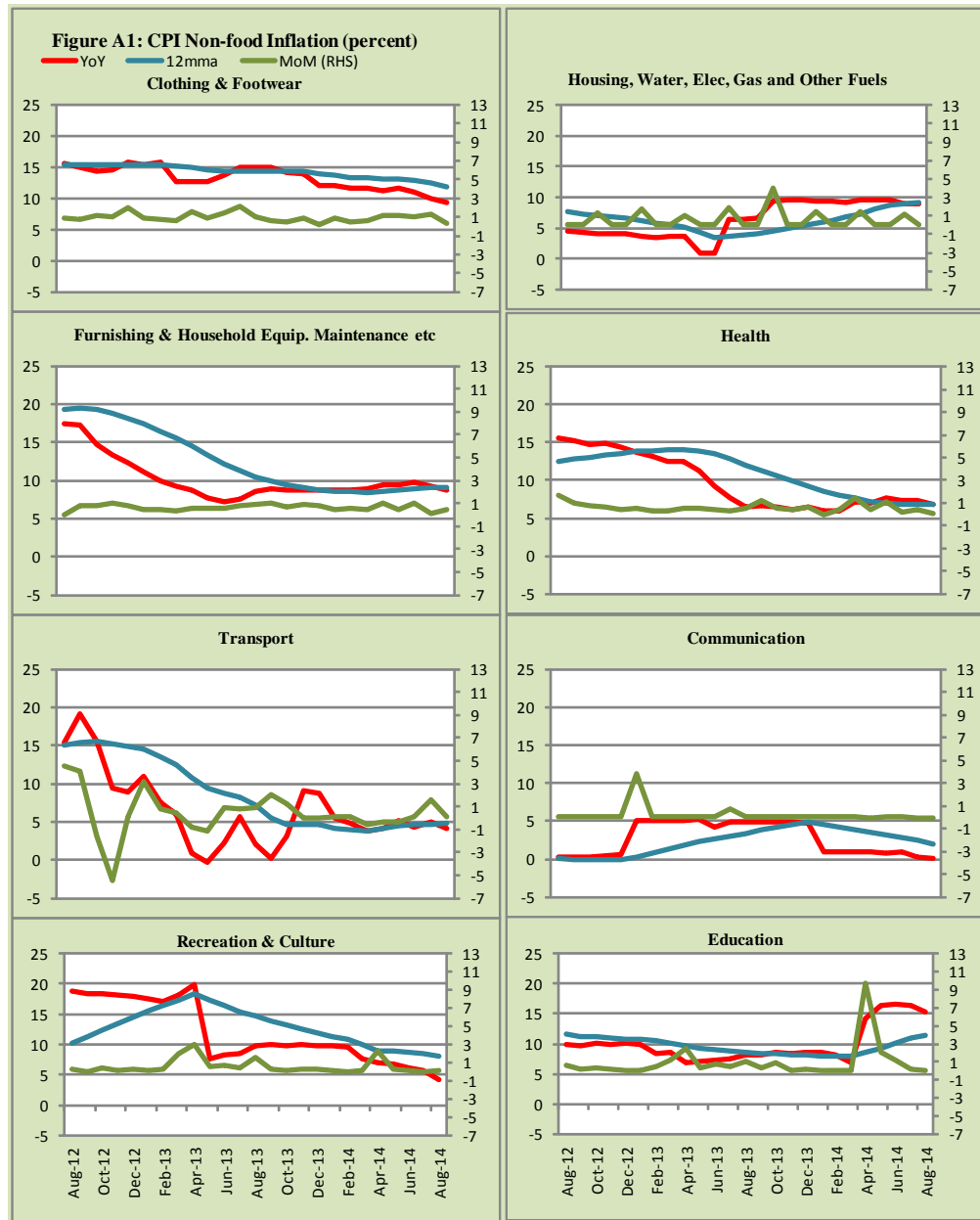


Figure A2: Frequency Distribution of Price Changes of CPI Items, August 2014

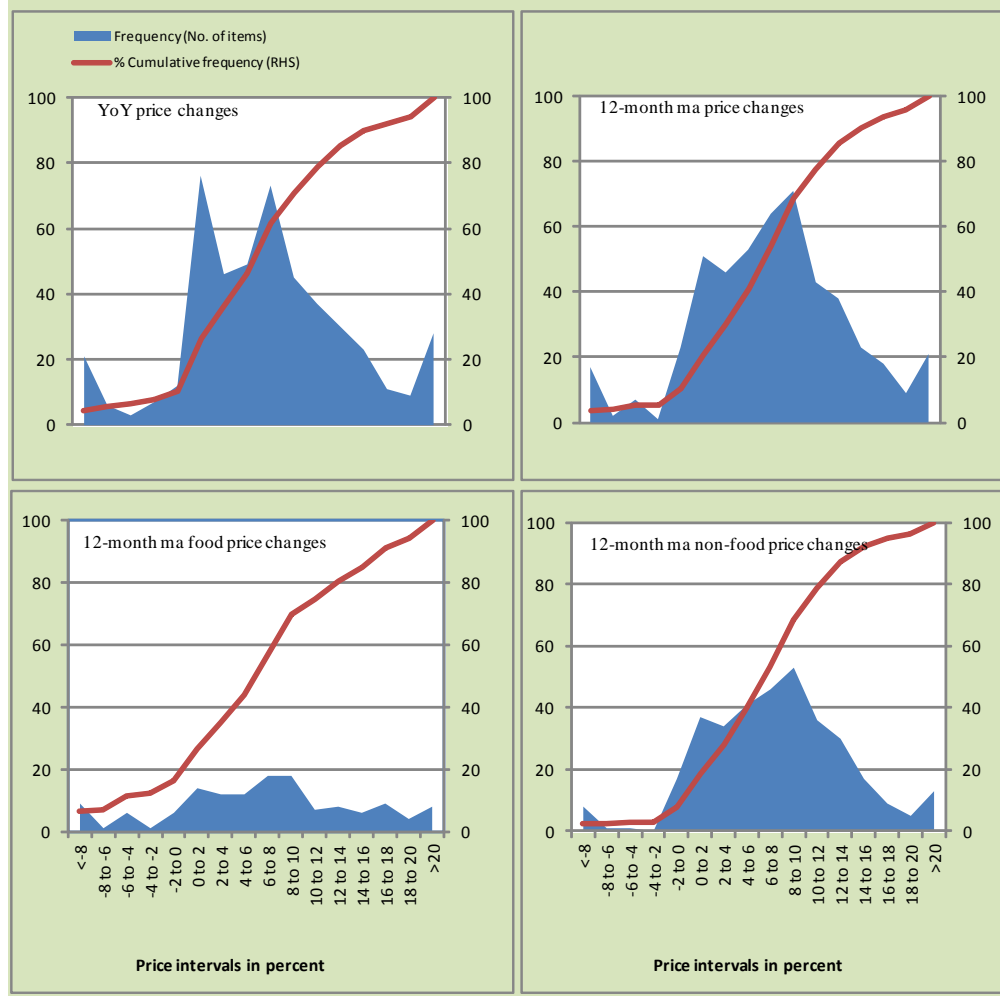


Figure A3: Frequency Distribution of Price Changes of WPI Commodities, August 2014

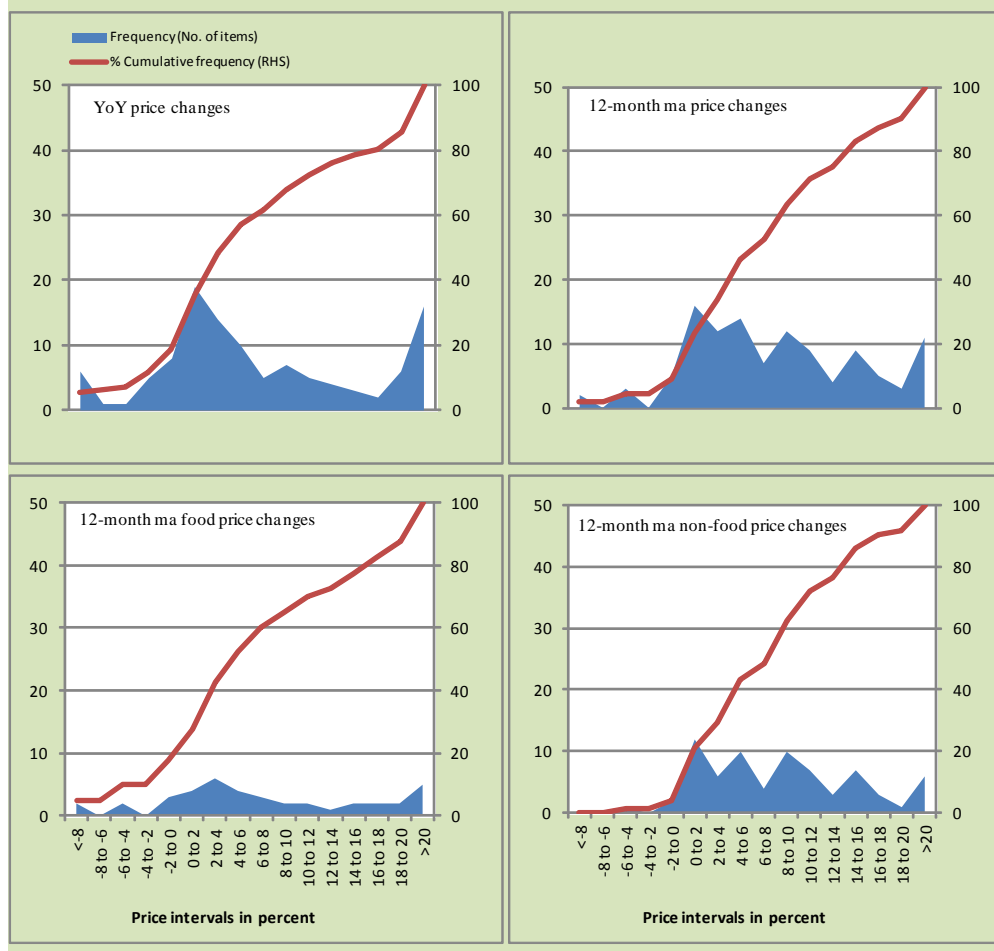
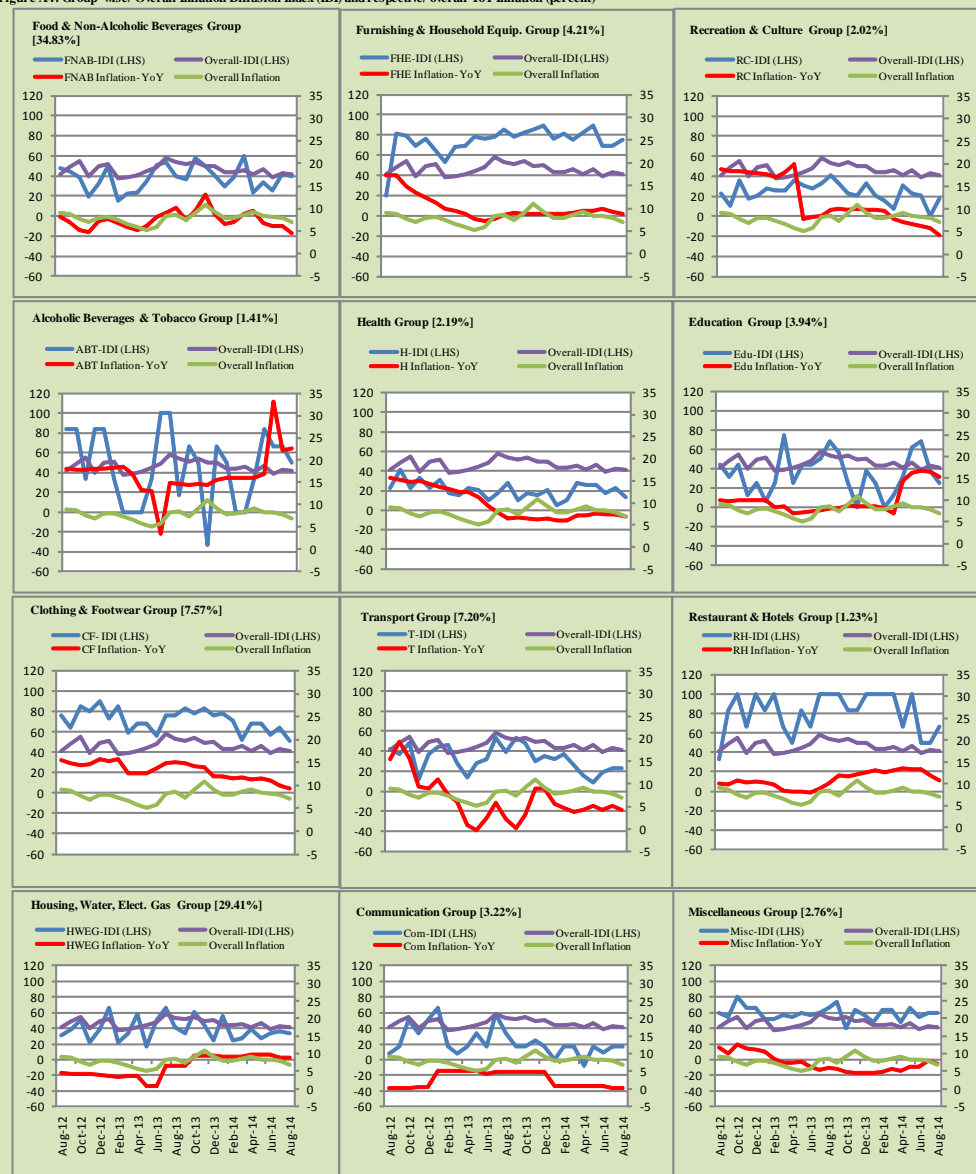


Figure A4: Group-wise/ Overall Inflation Diffusion Index (IDI) and respective/ overall YoY Inflation (percent)



Numbers in square brackets show the weights of respective groups in the CPI baskets.

Annexure B

Technical Notes

1. All the three measures of inflation, viz. CPI, WPI and SPI are computed by the following Laspeyres Index formula:

$$I_t = \sum_j w_0^j \left(\frac{P_t^j}{P_0^j} \right)$$

Where I_t is price index, w_0^j is weight of commodity j in the overall basket, P_t^j is price of commodity j in period t and P_0^j is its price in the base year.

2. Base year for all the indices is the year 2007-08.
3. CPI basket contains 487 consumers' goods; WPI basket contains 463 items; SPI contains 53 items.
4. YoY inflation is the percent change of an index in a given month over the index in the same month of the last year. It is computed as follows:

$$\pi_t = \left(\frac{I_t}{I_{t-12}} - 1 \right) \times 100$$

5. Period average inflation is the percent change of the average index during the period from July to the given month of a fiscal year over the average index during the corresponding period of the last year. It is computed as follows:

$$\bar{\pi}_t = \left(\frac{\sum_{i=0}^{t-v} I_{t-i}}{\sum_{i=0}^{t-12-v} I_{t-12-i}} - 1 \right) \times 100$$

Where v is the serial number of the month of July of current fiscal year in a given time series.

6. Monthly inflation is the percent change of an index in a given month over the index in the preceding month. It is computed as follows:

$$\pi_t = \left(\frac{I_t}{I_{t-1}} - 1 \right) \times 100$$

7. 12-month moving average inflation (Long-run trend inflation) is the percent change of 12-month moving average of a price index; it is computed as follows:

$$\tilde{\pi}_t = \left(\frac{\sum_{i=0}^{11} I_{t-i}}{\sum_{i=0}^{11} I_{t-12-i}} - 1 \right) \times 100$$

8. Core Inflation is defined as the persistent component of measured inflation that excludes volatile and controlled prices. It reflects the normal supply and demand conditions in the economy. Core inflation is computed by the following three methods:

- a) Non-food, Non-energy inflation (NFNE inflation); it is computed by excluding food group and energy items (kerosene oil, petrol, diesel, CNG, electricity and natural gas) from the CPI basket.
- b) 20% trimmed-mean inflation; it is computed through the following steps:

steps:

- i. All CPI items are arranged in ascending order according to YoY/12-month moving average/monthly/period average changes in their price indices in a given month.
- ii. 20 percent of the items showing extreme changes are excluded with 10 percent of the items at the top of the list (corresponding to cumulative weight of 90% or more) and 10 percent of the items at the bottom of the list (corresponding to cumulative weight of 10 percent or less).
- iii. The weighted mean of the changes in price indices of the rest of the items is core inflation.

- c) Relatively Stable Component of CPI (RSC-CPI) developed by State Bank of Pakistan is a hybrid method based on permanent exclusion criteria. Volatile price items, to be excluded in the newly proposed

measure RSC-CPI, are identified by analyzing the list and frequency of commodities that have been trimmed frequently in the past while computing monthly weighted trimmed mean measure. Commodities that were trimmed out 13 and above times since July 2008 to February 2013 are selected for permanently excluding from the CPI basket. This newly developed component includes a mix of both food and non-food commodities that show persistent price behavior. Fifty Commodities included comprise relatively stable component (RSC-CPI) with a weight of 67.69. The detailed methodology of RSC-CPI and group wise items along their weights can be viewed at the following link;

<http://www.sbp.org.pk/publications/wpapers/2013/wp66.pdf>

9. Weighted contribution of different items (or sub-groups) to total inflation is worked out as below:

Let the overall index (I_t) is the weighted average of price indexes of individual items or sub-groups (I_{it}), i.e.

$$I_t = \sum_i w_i \cdot I_{it}$$

The weighted contribution of a single item (or a sub-group) to overall inflation is defined as below:

$$C_{it} = \alpha_{it-12} \cdot w_i \cdot \left(\frac{\pi_{it}}{\pi_t} \right)$$

Where C_{it} : Contribution of i^{th} item to the overall inflation

$$\alpha_{it-12} = \frac{I_{it-12}}{I_{t-12}}; \text{ i.e. ratio of item's index to overall index in the}$$

reference month

w_i : Weights of i^{th} item

π_{it} : Inflation of i^{th} item

π_t : Overall inflation

10. Annualized rate of inflation (based on a month-on-month rate π) is computed as follows

$$\text{Annualized } \pi = \left(\left(1 + \frac{\pi}{100} \right)^{12} - 1 \right) \times 100$$

Methodology for Estimating Inflation Diffusion Index for Pakistan

We constructed an index to measure the spread of inflation in the 487 commodities of the CPI basket. It is based on month-on-month (MoM) change in the prices of these commodities and can be obtained by estimating what is known as an ‘inflation diffusion index’ (IDI) as below:

$$\frac{\text{Number of Commodities with } \uparrow \text{ in MoM change} - \text{Number of Commodities with } \downarrow \text{ in MoM change}}{\text{Number of Commodities for which prices are reported}}$$

Thus, it is the difference between the share of items with increasing prices (i.e. depicting inflation) and the share of items with falling prices (i.e. depicting deflation) in CPI amongst the commodities for which prices have altered or remained constant¹.

Based upon commodity level price data from July 2001 to February 2011 we computed inflation diffusion indices overall (general) CPI basket and for all groups in CPI basket (except House Rent Index being single item). A simple analysis² suggests that IDI is a leading indicator for Pakistan’s YoY inflation.

¹ We do not observe the prices of certain commodities (like the seasonal items) during certain periods of time. To calculate the inflation diffusion index we consider the commodities for which prices have been reported (irrespective of changed or not) during the month under review.

² Formal test shows one way ‘Granger’ causality from IDI to YoY inflation.