

Inflation Monitor

April 2013



State Bank of Pakistan

Statistics & DWH Department

ISSN 1992-8327 (print)

ISSN 1992-8335 (online)

The analysis in this document is based on data

- Provided by Pakistan Bureau of Statistics (PBS), for domestic inflation analysis
- Retrieved from IMF & World Bank websites for global inflation analysis

http://www.sbp.org.pk/publications/inflation_Monitor

Contents		Page
1.	Inflation in Brief	1
2.	City- wise Inflation	6
3.	Income Group- wise Inflation	7
4.	Weighted Contribution	9
5.	Inflation Diffusion Index	10
6.	Domestic Commodity Prices	11
7.	Global Commodity Prices	11
8.	Seasonal Adjustment in CPI	12
Annexure A		
Table A1	CPI Inflation by Groups	16
Table A2	Distribution of Price Changes (YoY) of CPI Basket	16
Table A3	Top and Bottom 15 Contributors to CPI Inflation (YoY)	17
Table A3.1	Top and Bottom 15 Contributors to CPI Inflation (MoM)	18
Table A3.2	Top Fifteen Contributors to CPI Inflation (YoY)	19
Table A3.3	Top Ten Contributors to CPI Food Inflation (YoY)	20
Table A3.4	Top Ten Contributors to CPI Non-Food Inflation (YoY)	21
Table A4	Distribution of Price Changes (YoY) - Selected CPI Items	22
Table A5	City-wise CPI Inflation by Income Groups	23
Table A6	City- wise CPI Inflation (YoY)	24
Table A7	Income Group-wise Inflation	25
Table A8	SPI Item-wise Price Movements	26
Table A9	Distribution of Price Changes (YoY)-WPI Items	27
Table A10	Consumer Price Index Numbers by Major Groups and Selected Commodities	28-29
Table A11	Wholesale Price Index Numbers by Major Groups and Selected Commodities	30-31
Table A12	Price Indices	32
Table A13	International Commodity Prices/ Indices	33
Table A14	CPI Data Series- Original and Seasonally Adjusted	34
Table A15	CPI Food Data Series- Original and Seasonally Adjusted	35
Table A16	CPI Monthly & Average Seasonal Factors	36
Table A17	CPI Food Monthly & Average Seasonal Factors	36
Table A18	CPI Month-on-Month % Change- Original & Seasonally Adjusted	37
Table A19	CPI Food Month-on-Month % Change- Original & Seasonally Adjusted	38
Figure A1	CPI Non-food Inflation	39
Figure A2	Frequency Distribution of Price Changes of CPI Items	40
Figure A3	Frequency Distribution of Price Changes of WPI Commodities	41
Figure A4	Group- wise/ overall Inflation Diffusion Index and Respective/ Overall YoY Inflation	42
Annexure B	Technical Notes	43-46

Team Leader

- Behzad Ali Ahmad Sr. Joint Director
behzad.ali@sbp.org.pk

Team Members

- Muhammad Ashfaq Assistant Director
muhammad.ashfaqch@sbp.org.pk
- Syed Salman Bukhari Assistant Director
salman.bukhari@sbp.org.pk

Review

Inflation in Brief

1. Headline CPI inflation (2007-08=100) is recorded at 5.8 percent on year-on-year basis in April 2013 as compared to 6.6 percent in the previous month and 11.3 percent in the corresponding month of last year.
2. CPI inflation on month-on-month basis is recorded at 1.1 percent in April 2013 as compared to 0.4 percent in the previous month and 1.8 percent in the corresponding month of last year. Seasonally adjusted month-on-month CPI inflation increased to 0.4 percent in April 2013 as compared 0.2 percent in the previous month.
3. Core inflation (trimmed) on year-on-year basis decreased to 7.6 percent in April 2013 as compared to 8.4 percent in the previous month and it was 11.0 percent in the corresponding month of last year.
4. On month-on-month basis, the Core inflation (trimmed) increased to 0.7 percent in April 2013 as compared to 0.2 percent in the previous month and was lower than 1.3 percent in the corresponding month of last year.
5. Non-food, non-energy inflation measured by CPI Core (NFNE) on year-on-year basis decreased to 8.7 percent in April 2013 as compared to 9.0 percent in the previous month. It was 10.9 percent in the corresponding month of last year.
6. Core NFNE inflation on month-on-month basis increased to 1.1 percent in April 2013 as compared to 0.4 percent in the previous month. A 1.4 percent rate of change in Core NFNE was observed in April 2012.
7. WPI inflation on year-on-year basis decreased to 6.8 percent in April 2013 when compared to 7.9 percent a month earlier. During April 2012, WPI inflation was recorded at 3.8%.

8. WPI inflation on month-on-month basis increased to 0.8 percent in April 2013 as compared to 0.3 percent in the previous month. It was 1.8 percent in April 2012.
9. SPI inflation on year-on-year basis decreased to 4.3 percent in April 2013 as compared to 6.2 percent in the previous month. It was 9.7 percent in the corresponding month of last year.
10. SPI inflation on month-on-month basis recorded no change during April 2013 as compared to 0.6 percent a month earlier and 1.8 percent in April 2012.

Table 1.1 Inflation Trends (percent) (Base 2007- 08 = 100)

Period	CPI Inflation						Core Inflation				WPI Inflation		SPI** Inflation	
	General		Food		Non-food		NFNE*		Trimmed					
	YoY	MoM	YoY	MoM	YoY	MoM	YoY	MoM	YoY	MoM	YoY	MoM	YoY	MoM
Apr-12	11.3	1.8	10.7	2.2	11.6	1.6	10.9	1.4	11.0	1.3	3.8	1.8	9.7	1.8
May-12	12.3	1.1	11.3	0.2	13.0	1.9	11.2	0.8	11.7	0.5	7.1	2.1	10.1	0.5
Jun-12	11.3	0.0	10.3	-0.2	12.0	0.2	11.5	0.7	11.1	0.5	6.4	0.0	11.9	1.8
Jul-12	9.6	-0.2	9.1	1.8	10.0	-1.7	11.3	1.0	10.7	0.7	7.2	0.4	7.3	-2.2
Aug-12	9.1	0.9	8.5	0.9	9.4	0.9	10.8	0.3	10.6	0.4	7.7	1.0	7.3	1.4
Sep-12	8.8	0.8	7.6	0.7	9.7	0.9	10.5	0.4	10.4	0.5	7.8	0.3	7.5	0.9
Oct-12	7.7	0.4	5.8	-0.1	9.0	0.7	10.2	1.2	9.7	0.7	7.5	0.1	6.2	-0.5
Nov-12	6.9	-0.4	5.3	-0.3	8.1	-0.4	9.8	0.2	8.8	0.2	7.7	-0.4	5.5	0.0
Dec-12	7.9	0.2	7.7	0.0	8.1	0.4	9.8	0.5	9.2	0.3	9.6	0.4	7.4	0.3
Jan-13	8.1	1.7	8.1	1.9	8.1	1.5	10.0	1.2	9.9	1.0	8.6	1.2	7.1	1.6
Feb-13	7.4	-0.3	7.4	-1.3	7.4	0.4	9.6	0.4	9.2	0.2	8.3	0.3	6.8	-0.1
Mar-13	6.6	0.4	6.3	0.5	6.7	0.3	9.0	0.4	8.4	0.2	7.9	0.3	6.2	0.6
Apr-13	5.8	1.1	5.5	1.4	6.0	0.9	8.7	1.1	7.6	0.7	6.8	0.8	4.3	0.0

* NFNE is Non-food non-energy

** SPI for all income groups combined

Fig 1.1: Summary of Price Inflation

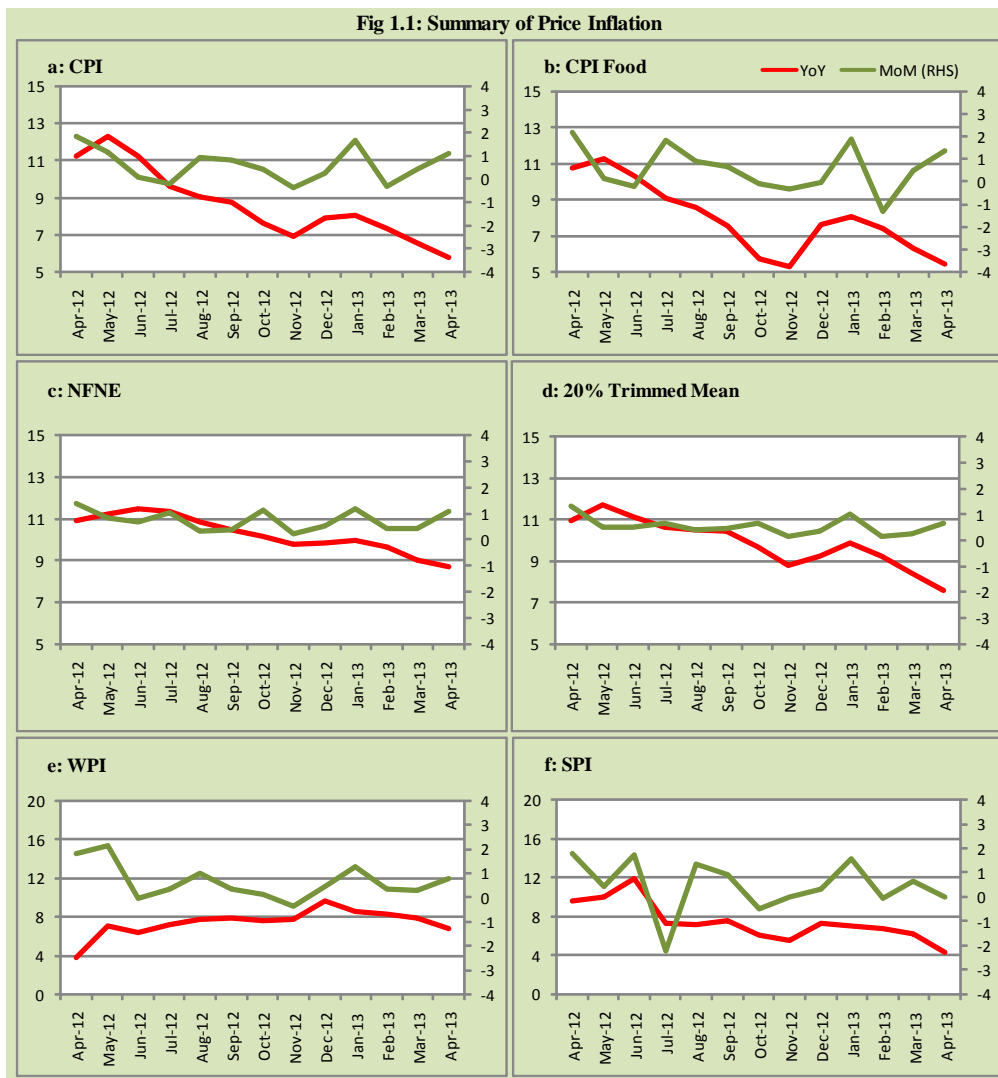


Fig 1.2: Movements in Price Indices (percent)

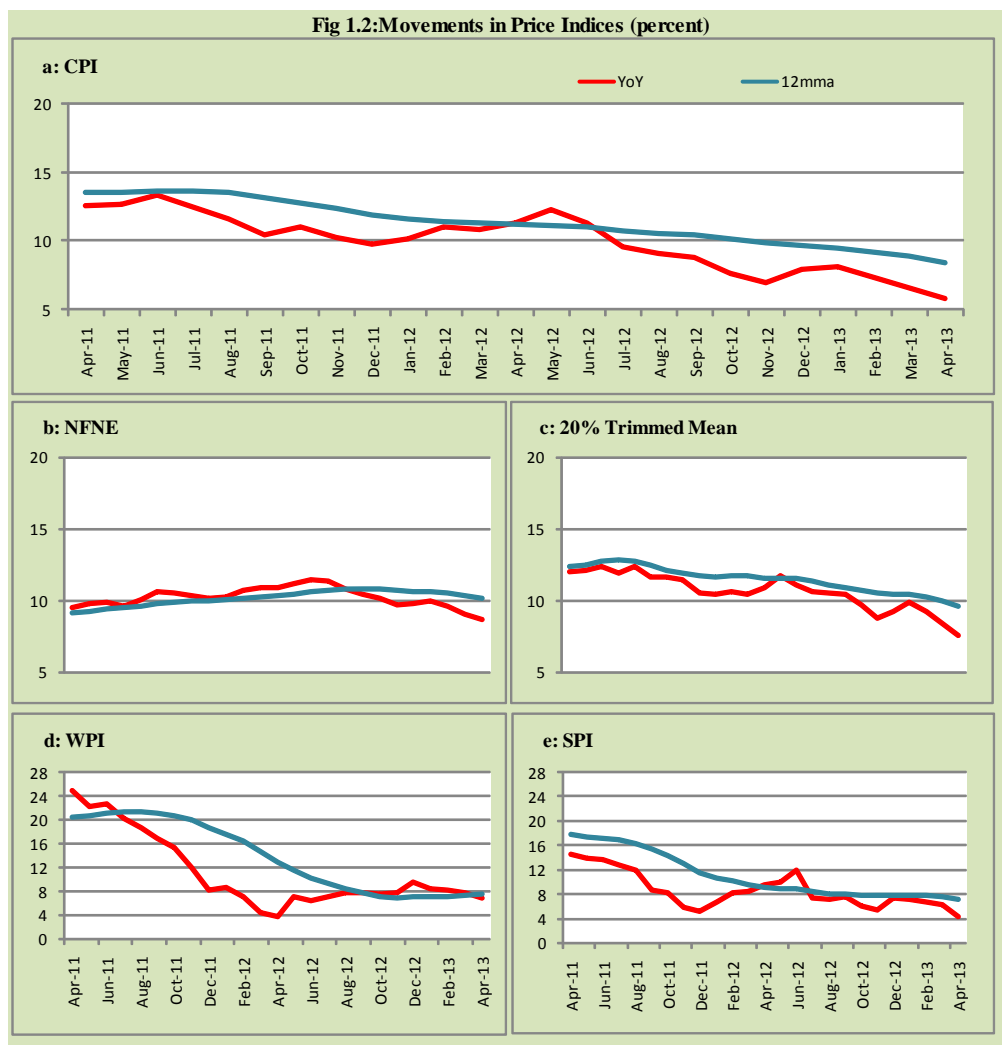
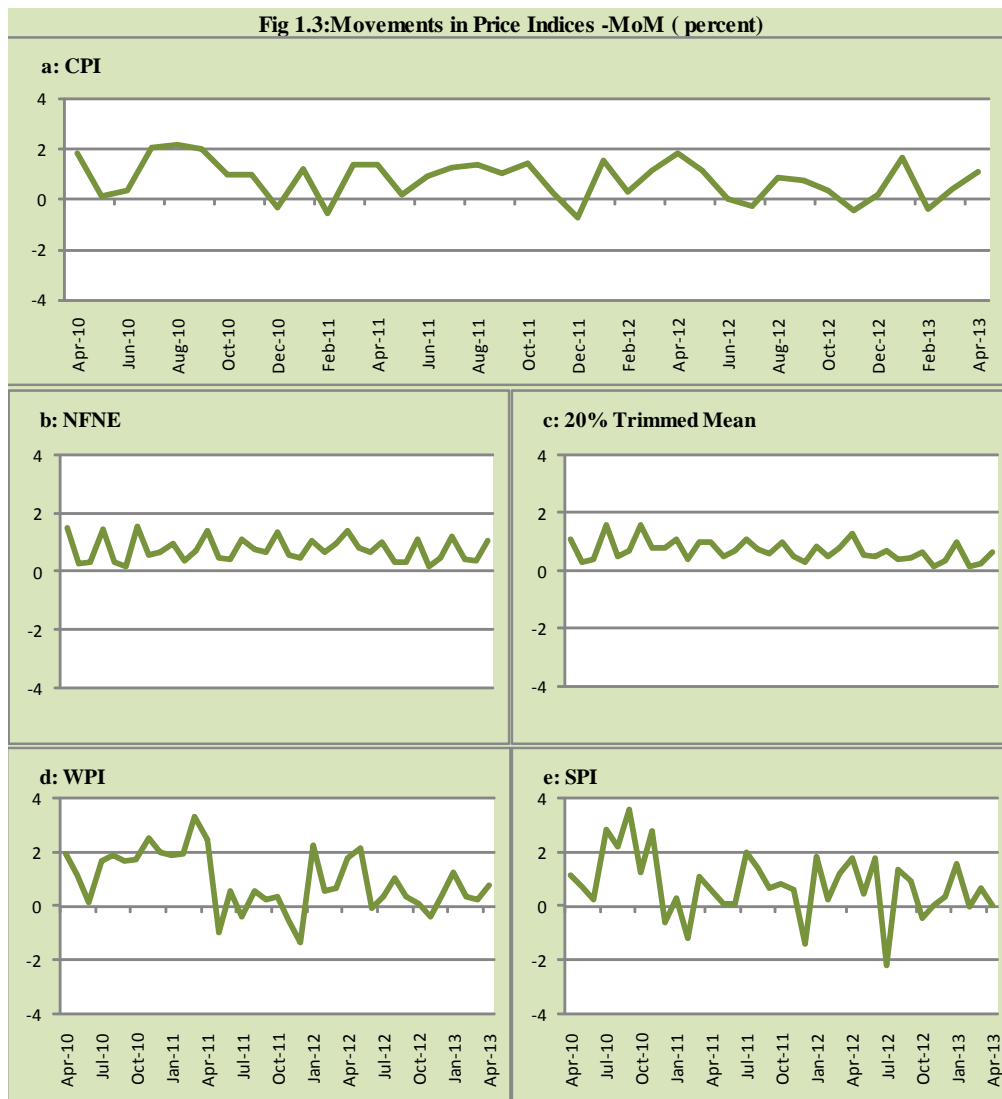
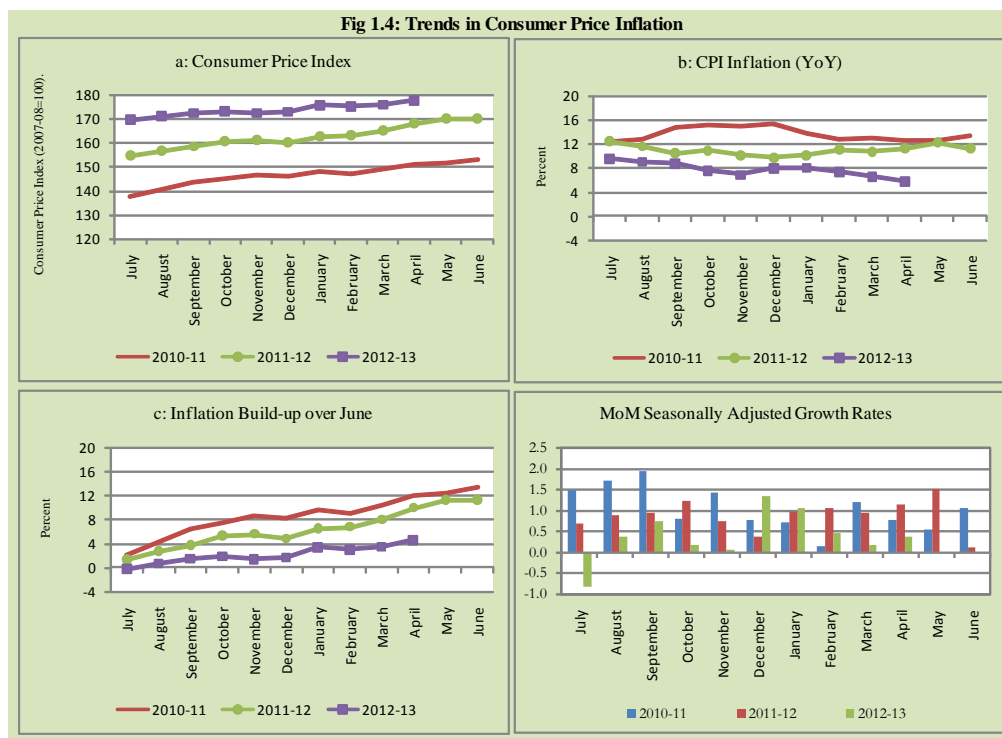


Fig 1.3: Movements in Price Indices -MoM (percent)





2. City wise Inflation

CPI Inflation on year-on-year basis in provincial capitals of Pakistan was lower than overall inflation during April 2013 while in federal capital it was at the level of overall inflation. Among these five cities, the lowest inflation was observed in Quetta at 3.9 percent while the highest inflation was observed in Islamabad at 5.8 percent (Table A6 of annexure-A).

Table 2.1 City-wise Inflation of Selected Cities (percent)

	Apr-12		Mar-13		Apr-13	
	MoM	YoY	MoM	YoY	MoM	YoY
Overall CPI	1.8	11.3	0.4	6.6	1.1	5.8
Islamabad	2.2	10.6	0.7	6.7	1.3	5.8
Karachi	1.0	10.3	0.4	5.7	-0.3	4.4
Lahore	1.4	10.7	0.5	5.4	1.1	5.0
Peshawar	2.0	10.6	0.5	5.9	1.5	5.3
Quetta	2.9	12.5	-0.2	5.8	1.0	3.9

3. Income Group wise Inflation

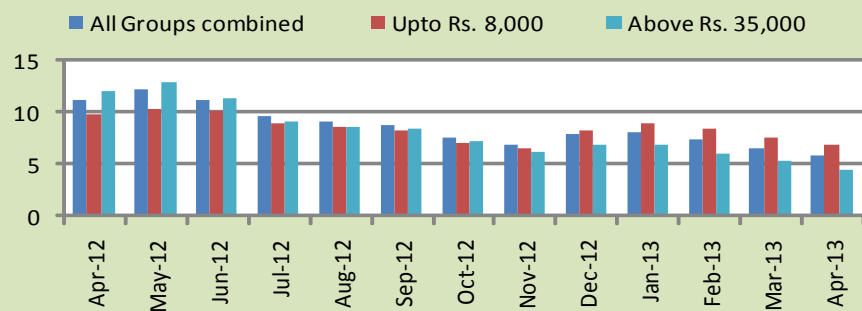
Income group- wise data showed that income group above Rs. 35,000 witnessed lower inflation than the overall inflation in CPI basket during April 2013 for general, food and non-food groups and lowest among the groups. The lowest income group (Up to Rs. 8, 000) has the highest inflation in food group during the month of April 2013 (Table A7 of annexure-A).

Table 3.1 Income Group- wise Inflation (YoY)

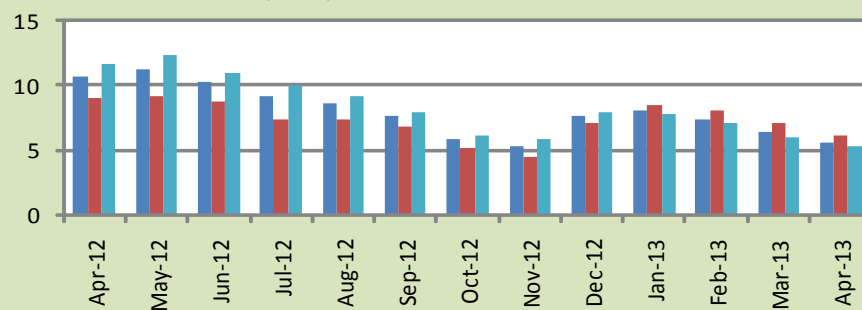
Income Groups	General			Food			Non-food		
	Apr-12	Mar-13	Apr-13	Apr-12	Mar-13	Apr-13	Apr-12	Mar-13	Apr-13
All Groups Combined	11.3	6.6	5.8	10.7	6.3	5.5	11.6	6.7	6.0
Up to Rs. 8,000	9.9	7.6	7.0	9.0	7.1	6.1	11.0	8.4	8.1
Rs. 8,001- 12,000	10.2	8.4	7.7	9.7	6.7	5.8	10.8	10.2	9.8
Rs. 12,001- 18,000	10.3	8.0	7.3	10.2	6.6	5.6	10.4	9.5	9.0
Rs. 18,001- 35,000	11.0	6.1	5.4	10.7	6.3	5.5	11.1	5.9	5.3
Above Rs. 35,000	12.1	5.3	4.5	11.7	6.0	5.2	12.4	5.0	4.1

Fig 3.1: Income Group- wise Inflation

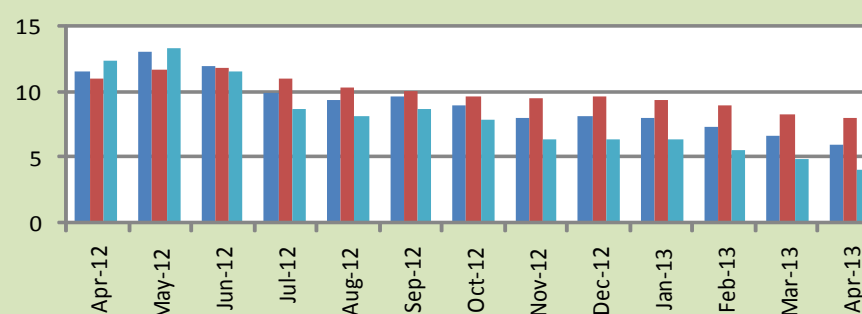
a: CPI Overall Inflation (YoY)



b: CPI Food Inflation (YoY)



c: CPI Non-Food Inflation (YoY)



4. Weighted Contribution

The weighted contribution of food group in the overall inflation decreased to 39.66 percent during April 2013 from 40.11 percent in March 2013. It was 40.06 percent in April 2012.

The weighted contribution of non-food group showed increase to touch 60.34 percent in April 2013 from 59.89 percent in March 2013.

Table 4.1 Weighted Contribution to CPI Inflation (YoY)

Period	Food	Clothing & Footwear	Housing, Water, Elect, Gas & Other Fuel	Transport	Education	Others
Apr-12	40.06	9.63	18.88	12.79	4.01	14.62
May-12	38.26	9.17	23.72	10.54	3.49	14.82
Jun-12	38.05	9.65	25.43	6.22	3.60	17.04
Jul-12	40.17	11.54	15.53	9.68	3.66	19.42
Aug-12	39.99	12.01	12.97	12.64	3.85	18.55
Sep-12	36.69	11.86	13.06	16.16	3.86	18.38
Oct-12	32.26	13.20	14.34	15.11	4.52	20.57
Nov-12	32.78	14.79	15.75	10.05	4.90	21.74
Dec-12	40.58	14.29	13.76	8.43	4.39	18.56
Jan-13	41.94	13.53	11.88	10.07	4.20	18.38
Feb-13	41.59	15.24	12.70	8.00	3.93	18.53
Mar-13	40.11	14.02	14.27	7.14	4.58	19.89
Apr-13	39.66	15.99	16.52	1.30	4.17	22.36

5. Inflation Diffusion Index

Table 5.1 Inflation Diffusion Index - based on MoM change													
	Apr-12	May-12	Jun-12	Jul-12	Aug-12	Sep-12	Oct-12	Nov-12	Dec-12	Jan-13	Feb-13	Mar-13	Apr-13
General	53.1	55.6	27.0	41.4	41.4	48.6	54.7	39.6	49.6	51.4	37.6	38.8	40.3
Food & Non-Alcoholic Beverages	37.6	43.4	-23.4	25.4	47.8	44.2	38.3	19.1	33.0	49.6	14.2	21.4	21.6
Alcoholic Beverages & Tobacco	66.7	50.0	33.3	100.0	83.3	83.3	33.3	83.3	83.3	33.3	0.0	0.0	0.0
Clothing & Footwear	62.7	76.3	44.1	62.7	76.3	64.4	84.7	79.7	89.8	72.9	84.7	59.3	67.8
Housing, Water, Elect, Gas & other Fuels	58.3	38.9	33.3	33.3	30.6	38.9	50.0	22.2	38.9	66.7	22.2	33.3	58.3
Furnishing & Household Equip. Maintenance etc	92.8	87.0	78.3	68.1	20.3	81.2	79.7	69.6	76.8	63.8	53.6	68.1	69.6
Health	25.6	30.8	41.0	33.3	23.1	41.0	23.1	33.3	23.1	30.8	17.9	15.4	23.1
Transport	48.8	44.2	20.9	39.5	41.9	37.2	48.8	11.6	37.2	44.2	46.5	27.9	14.0
Communication	41.7	8.3	50.0	-25.0	8.3	16.7	50.0	33.3	50.0	66.7	16.7	8.3	16.7
Recreation & Culture	35.9	74.4	17.9	17.9	23.1	10.3	35.9	17.9	20.5	28.2	25.6	25.6	35.9
Education	50.0	31.3	0.0	25.0	43.8	31.3	43.8	12.5	25.0	6.3	25.0	75.0	25.0
Restaurant & Hotels	100.0	100.0	66.7	100.0	33.3	83.3	100.0	66.7	100.0	83.3	100.0	66.7	50.0
Miscellaneous	51.4	54.3	48.6	60.0	60.0	54.3	80.0	65.7	65.7	51.4	51.4	57.1	54.3
NFNE	57.4	57.7	44.7	47.0	38.8	49.1	62.1	46.4	55.3	52.7	45.9	45.6	49.1

See annexure B (Technical Notes) for the definition of Inflation Diffusion Index.

6. Domestic Commodity Prices

Table 6.1 Inflation in Domestic CPI Food Commodities

Sr. No	Item	Unit	Apr-12		Mar-13		Apr-13	
			YoY	MoM	YoY	MoM	YoY	MoM
1	Wheat	10 Kg	1.37	0.43	22.89	0.29	15.64	-5.50
2	Wheat Flour Bag	10 Kg	1.92	0.46	19.18	-0.36	15.43	-2.70
3	Rice Basmati Sup. Qlty.	Kg	11.41	2.40	25.52	0.66	23.15	0.47
4	Pulse Masoor (Washed)	Kg	-12.80	0.25	0.62	-0.71	1.56	1.18
5	Pulse Moong (Washed)	Kg	-11.44	-0.56	-7.68	-0.14	-8.58	-1.52
6	Pulse Mash (Washed)	Kg	-11.15	-1.72	-8.28	-0.14	-8.87	-2.36
7	Pulse Gram	Kg	35.55	0.49	0.84	-5.99	-6.59	-6.91
8	Vegetable Ghee (Loose)	Kg	5.73	1.10	-4.92	-0.13	-7.79	-1.95
9	Sugar Refined	Kg	-15.88	0.16	-6.21	-0.06	-4.76	1.70
10	Milk Fresh (Unboiled)	Ltr	16.13	1.44	10.58	0.32	9.62	0.56
11	Tea- Tapal Danedar	200 Gm	6.95	0.00	20.37	5.20	26.31	4.94
12	Beef With Bone Av. Qlty.	Kg	16.04	1.09	4.10	0.04	3.83	0.82
13	Mutton Av. Qlty.	Kg	15.75	0.42	5.07	0.30	5.58	0.90
14	Chicken Farm Broiler (Live)	Kg	22.58	12.15	-11.50	-12.03	-17.33	4.76
15	Eggs Farm	Doz	5.58	-22.27	-0.88	4.71	10.06	-13.69
16	Potatoes	Kg	8.05	21.97	10.66	-2.48	-14.95	-6.26
17	Onion	Kg	17.96	-27.94	11.33	29.50	116.48	40.12
18	Tomatoes	Kg	62.31	77.01	100.22	17.07	-17.55	-27.11
19	Ginger	Kg	-36.32	-5.44	24.01	1.94	31.12	-0.02
20	Garlic	Kg	-49.81	-5.79	22.79	2.96	30.43	0.07

7. Global Commodity Prices

Table 7.1 Changes in Major Global Indices (percent)

Item/ Group	Apr-12		Mar-13		Apr-13	
	YoY	MoM	YoY	MoM	YoY	MoM
Overall	-5.8	-2.0	-9.0	-3.7	-9.6	-2.7
Food	-8.3	1.0	4.3	-0.8	2.5	-0.8
Metals	-18.6	-1.7	-7.9	-7.1	-9.8	-3.7
Energy	-0.9	-2.9	-12.3	-4.2	-12.5	-3.1
Agricultural	-18.5	1.4	-3.9	-0.6	-6.6	-1.5
Cotton	-53.8	0.6	-5.1	5.3	-7.5	-2.0

Source: IMF

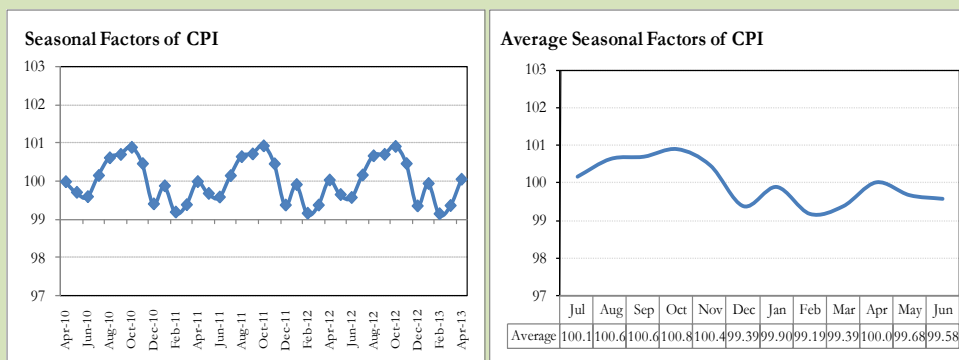
8. Seasonal Adjustment in CPI

Seasonal adjustment is the process of estimating and removing the seasonal effects from a time series after decomposing it into seasonal, trend, cycle and irregular components. The purpose is to identify the different components of the time series and thus provide a better understanding of its underlying behavior. Seasonally adjusted changes are usually preferred for analyzing general price trends in the economy because they eliminate the effect of changes that normally occur at the same time and in about the same magnitude every year. Various statistical methods can be used to decompose a time series into its constituent components. The State Bank of Pakistan uses X-12- ARIMA Seasonal Adjustment Method for this purpose.

The changes in consumer prices are normally reported in terms of year-on-year and month-on-month basis. Seasonal adjustment is particularly useful for analyzing month-on-month changes. The monthly data series of Consumer Price Index (CPI) from July 2008 to April 2013 has been used for seasonal adjustment analysis. The seasonal analysis is carried out without taking trading-day or Islamic calendar month's effects.

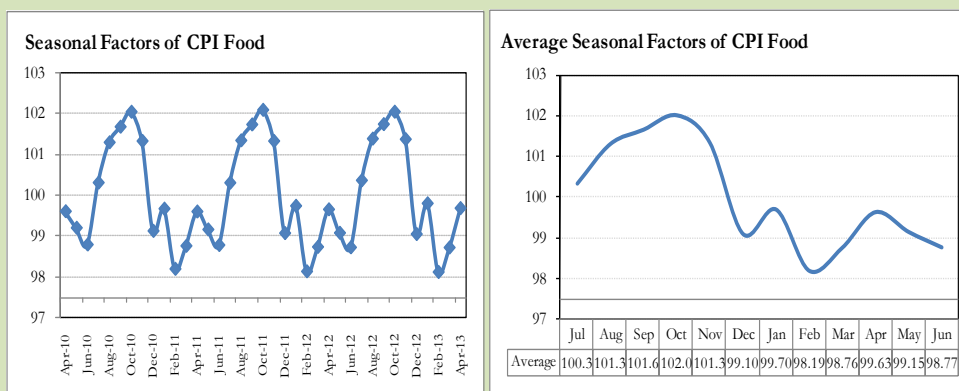
Figure 8.1 reveals that seasonality in CPI has been increasing over the period of last four years. Average seasonal factors reveal strong seasonality during the calendar year. There is an upward seasonality during the months from July to November & April and downward seasonality in the remaining months of the year. Upward and downward seasonality is above and below the trend line respectively. It is important to note that seasonal factors are estimates based on present and past experience and that future data may not necessarily show the same pattern of seasonal factors.

Fig. 8.1 Seasonal Factors of CPI



Note: Data Available in Annex Table 16.

Fig. 8.2 Seasonal Factors of CPI Food



Note: Data Available in Annex Table 17.

Figures 8.3 & 8.4 show that seasonally adjusted series are relatively smoother than the original series due to the removal of the seasonal variations. The trend follows the long-term movement in original series, and is smoother than the original series because some irregular fluctuations have been removed.

Fig. 8.3 Seasonal Plots of CPI

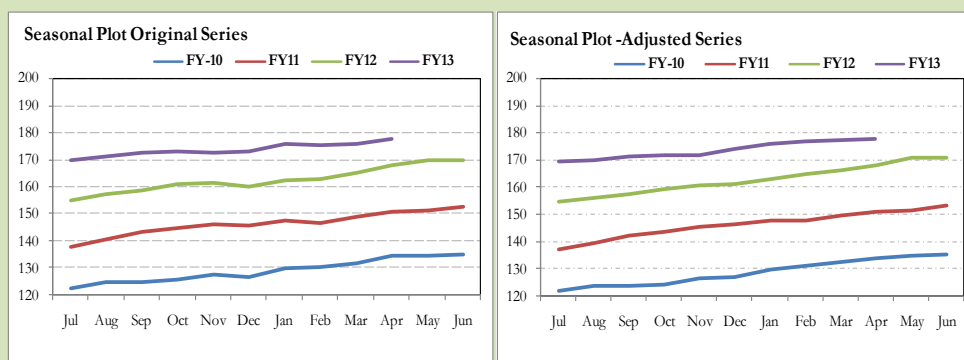
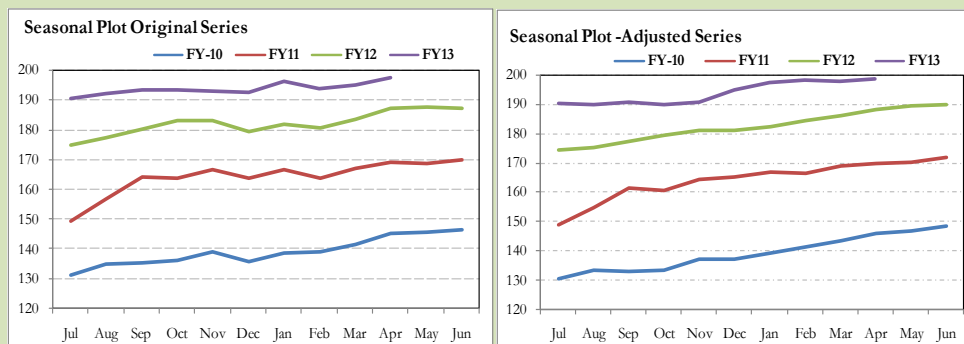


Fig. 8.4 Seasonal Plots of CPI (Food)



Seasonally adjusted CPI for April 2013 stood at 177.64 against 177.74 in original series showing a decrease of 0.10 on account of adjustment of upward seasonality in April 2013.

Seasonally adjusted CPI food group for April 2013 stood at 198.37 against 197.74 in original series showing an increase of 0.64 on account of adjustment of downward seasonality in April 2013.

Month-on-month change of seasonally adjusted CPI series stood at 0.39% reflecting increase during April 2013 over March 2013 and an increase of 1.09% in original series.

Month-on-month change of seasonally adjusted CPI food group series stood at 0.40% reflecting increase during April 2013 over March 2013 and an increase of 1.37% in original series.

It is important to note that inflation rates should be analyzed on the basis of seasonally adjusted rates. This is especially needed for inflation rates on month-on-month basis. The most recent annual rate of inflation is usually indicated by annualizing the seasonally adjusted month-on-month rate. Annualized rate of CPI inflation in April 2013 (corresponding to the seasonally adjusted month-on-month rate) is 4.78 percent.

Fig. 8.5 Month-on-Month Percent Changes in CPI

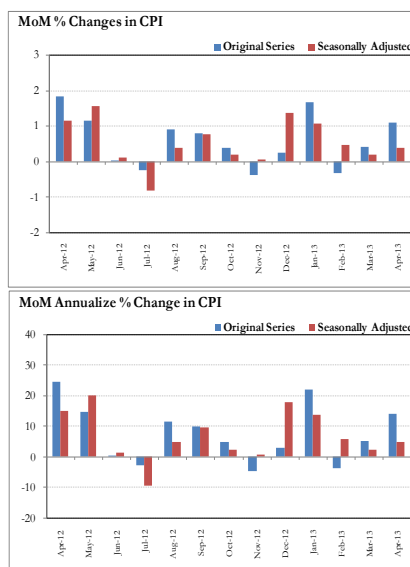
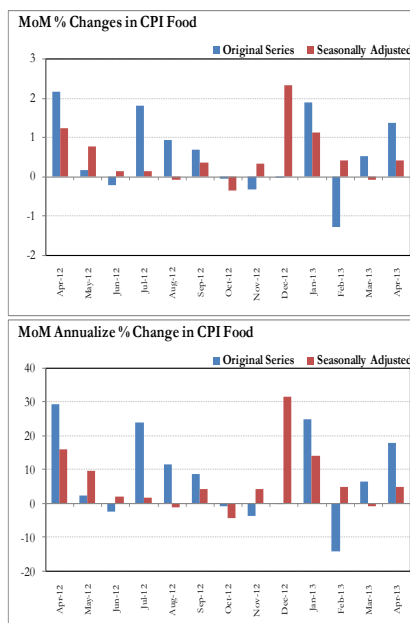


Fig. 8.6 Month-on-Month Percent Changes in CPI Food



Annexure A

Table A1: CPI Inflation by Groups (percent)							
	Weigh	MoM change			YoY change		
		Apr-12	Mar-13	Apr-13	Apr-12	Mar-13	Apr-13
I. Food Group	37.5	2.2	0.5	1.4	10.7	6.3	5.5
Food & Non-Alcoholic Beverages	34.8	2.2	0.5	1.5	10.7	5.9	5.1
Alcoholic Beverages & Tobacco	1.4	3.2	0.0	0.0	11.4	16.9	13.3
Restaurant & Hotels	1.2	0.6	0.4	0.3	11.4	8.6	8.2
II. Non-Food Group	62.5	1.6	0.3	0.9	11.6	6.7	6.0
Clothing & Footwear	7.6	1.5	0.6	1.6	15.5	12.6	12.7
Housing, Water, Elect, Gas & other	29.4	1.0	0.1	1.1	7.9	3.6	3.7
Furnishing & Household Equip.	4.2	1.1	0.3	0.6	20.3	9.3	8.8
Health	2.2	0.5	0.3	0.5	11.5	12.4	12.4
Transport	7.2	4.2	0.4	-0.7	19.4	6.0	0.9
Communication	3.2	0.0	0.0	0.0	-0.6	5.1	5.1
Recreation & Culture	2.0	1.5	2.0	2.9	7.3	18.2	19.9
Education	3.9	4.3	1.2	2.5	12.9	8.7	6.8
Miscellaneous	2.8	0.1	0.0	-0.1	17.7	7.5	7.3
Headline	100	1.8	0.4	1.1	11.3	6.6	5.8

Table A2: Distribution of Price changes (YoY) of CPI basket											
Groups	% changes	No of items in each inflation range									
		Total number of items		Decrease or no change (0% or less)		Subdued increase (>0% but <5%)		Moderate increase (5% but less than 10%)		Double digit increase (10% or more)	
		Apr-12	Apr-13	Apr-12	Apr-13	Apr-12	Apr-13	Apr-12	Apr-13	Apr-12	Apr-13
I. Food Group	5.5	125	125	15	39	12	22	24	29	74	35
Food & Non-Alcoholic Beverages	5.1	113	113	15	39	12	20	21	24	65	30
Alcoholic Beverages & Tobacco	13.3	6	6	0	0	0	2	2	1	4	3
Restaurant & Hotels	8.2	6	6	0	0	0	0	1	4	5	2
II. Non-Food Group	6.0	348	348	39	50	37	70	60	100	212	128
Clothing & Footwear	12.7	59	59	5	5	0	0	8	10	46	44
Housing, Water, Elect, Gas & other Fuels	3.7	36	36	2	7	4	6	10	12	20	11
Furnishing & Household Equip. Maintenance etc	8.8	69	69	2	4	2	15	12	29	53	21
Health	12.4	39	39	16	14	5	2	2	6	16	17
Transport	0.9	43	43	0	6	6	15	6	15	31	7
Communication	5.1	12	12	6	2	1	5	3	4	2	1
Recreation & Culture	19.9	39	39	5	6	14	15	6	5	14	13
Education	6.8	16	16	2	4	1	4	4	5	9	3
Miscellaneous	7.3	35	35	1	2	4	8	9	14	21	11
Overall	5.8	473	473	54	89	49	92	84	129	286	163

Note: Prices of 14 seasonal items were not reported during the month.

Table A3: Top and Bottom 15 Contributors to CPI Inflation (YoY) in April 2013

Top 15 Contributors		YoY Change			Weighted Contribution
Items/ Contributors	Weights	Apr-12	Apr-13		
Ranked by Weighted Contribution					
1	House Rent	21.81	6.59	7.07	21.39
2	Milk Fresh	6.68	16.12	9.69	13.41
3	Electricity	4.40	0.54	16.39	12.49
4	Wheat Flour	4.16	1.84	15.30	11.00
5	Onion	0.55	17.96	116.49	9.70
6	Text Books	0.57	6.95	48.60	4.88
7	Education	3.94	12.90	6.80	4.17
8	Rice	1.58	12.99	15.25	3.93
9	Cotton Cloth	1.73	6.07	14.26	3.82
10	Transport Services	2.70	11.38	7.11	3.72
11	Cigarette	1.39	11.27	13.45	3.24
12	Tea	0.84	6.76	15.67	2.81
13	Tailoring	0.88	16.92	13.96	2.39
14	Meat	2.43	15.95	4.40	2.34
15	Household Servant	1.04	32.68	11.38	2.13
Total		54.72			101.42
Bottom 15 Contributors					
1	Gas	1.58	29.41	-46.08	-19.71
2	Fresh Fruits	1.86	15.93	-11.79	-5.24
3	Chicken	1.36	22.58	-17.33	-4.90
4	Motor Fuel	3.03	28.87	-6.76	-4.08
5	Spices	0.54	17.99	-18.91	-2.88
6	Tomatoes	0.46	62.31	-17.55	-1.56
7	Vegetable Ghee	2.07	5.35	-4.31	-1.49
8	Potatoes	0.49	8.05	-14.95	-1.16
9	Sugar	1.04	-15.88	-4.76	-1.03
10	Pulse Moong	0.23	-11.44	-8.58	-0.49
11	Gram Whole	0.16	32.55	-10.63	-0.40
12	Pulse Mash (Washed)	0.21	-11.15	-8.87	-0.39
13	Pulse Gram	0.24	35.54	-6.59	-0.35
14	Besan	0.15	30.78	-0.46	-0.02
15	Gur	0.02	-11.62	0.55	0.00
Total		13.45			-43.69

Table A3.1: Top and Bottom 15 Contributors to CPI Inflation (MoM) in April 2013				
Top 15 Contributors				
Items/ Contributors	Weights	MoM Change		Weighted Contribution
		Mar-13	Apr-13	
Ranked by Weighted Contribution				
1 Fresh Vegetable	1.62	1.23	20.97	28.06
2 Onion	0.55	29.50	40.12	26.18
3 House Rent	21.81	0.00	1.48	23.97
4 Fresh Fruits	1.86	4.18	12.46	22.03
5 Education	3.94	1.19	2.52	8.17
6 Cotton Cloth	1.73	0.95	4.38	6.52
7 Chicken	1.36	-12.04	4.76	5.38
8 Text Books	0.57	3.18	6.89	4.88
9 Milk Fresh	6.68	0.31	0.53	4.07
10 Tea	0.84	5.44	2.53	2.60
11 Meat	2.43	0.13	0.85	2.37
12 Sugar	1.04	-0.06	1.70	1.75
13 Beverages	1.20	2.59	1.29	1.40
14 Woolen Cloth	0.88	0.56	1.14	1.04
15 Dopatta	0.44	0.36	1.94	0.88
Total	46.97			139.29
Bottom 15 Contributors				
1 Tomatoes	0.46	17.08	-27.11	-13.82
2 Wheat Flour	4.16	-0.32	-2.91	-12.62
3 Egg	0.46	4.71	-13.69	-6.13
4 Transport Services	2.70	1.49	-1.20	-3.46
5 Potatoes	0.49	-2.48	-6.26	-2.23
6 Motor Fuel	3.03	-0.64	-0.76	-2.18
7 Wheat	0.35	0.29	-5.50	-1.99
8 Pulse Gram	0.24	-5.99	-6.91	-1.85
9 Vegetable Ghee	2.07	-0.14	-0.95	-1.62
10 Spices	0.54	-6.11	-2.31	-1.48
11 Gram Whole	0.16	-4.60	-5.08	-0.91
12 Besan	0.15	-4.67	-5.04	-0.89
13 Personal Equipments	0.84	-1.17	-0.53	-0.61
14 Pulse Mash (Washed)	0.21	-0.14	-2.35	-0.49
15 Pulse Moong	0.23	-0.14	-1.52	-0.41
Total	16.10			-50.70

Table A3.2: Top Fifteen Contributors to CPI Inflation (YoY) in April 2013

Items/ Contributors		Weights	YoY Change		Weighted Contribution
			Apr-12	Apr-13	
A. Ranked by Percentage Change					
1	Onion	0.55	17.96	116.49	9.70
2	Text Books	0.57	6.95	48.60	4.88
3	Woolen Readymade Garments	0.40	13.83	19.88	1.30
4	Dopatta	0.44	22.07	17.88	1.38
5	Honey	0.04	10.64	17.25	0.17
6	Electricity	4.40	0.54	16.39	12.49
7	Doctor (MBBS) Clinic Fee	0.59	18.89	16.01	1.67
8	Tea	0.84	6.76	15.67	2.81
9	Wheat	0.35	1.37	15.64	0.91
10	Cleaning & Laundering	0.21	17.01	15.57	0.59
11	Wheat Flour	4.16	1.84	15.30	11.00
12	Rice	1.58	12.99	15.25	3.93
13	Cotton Cloth	1.73	6.07	14.26	3.82
14	Tailoring	0.88	16.92	13.96	2.39
15	Wheat Product	0.10	2.39	13.92	0.23
Total		16.85			57.27
B. Ranked by Weights					
1	House Rent	21.81	6.59	7.07	21.39
2	Milk Fresh	6.68	16.12	9.69	13.41
3	Electricity	4.40	0.54	16.39	12.49
4	Wheat Flour	4.16	1.84	15.30	11.00
5	Education	3.94	12.90	6.80	4.17
6	Communication & Apparatus	3.15	-0.77	5.17	2.03
7	Motor Fuel	3.03	28.87	-6.76	-4.08
8	Transport Services	2.70	11.38	7.11	3.72
9	Meat	2.43	15.95	4.40	2.34
10	Vegetable Ghee	2.07	5.35	-4.31	-1.49
11	Fresh Fruits	1.86	15.93	-11.79	-5.24
12	Cooking Oil	1.75	7.76	5.36	1.48
13	Cotton Cloth	1.73	6.07	14.26	3.82
14	Fresh Vegetable	1.62	4.97	2.17	0.68
15	Rice	1.58	12.99	15.25	3.93
Total		62.94			69.65
Note: Weighted contribution is estimated by multiplying the weights by the price change of an item; this is then reported as a share in YoY change in CPI, which is 5.8 percent in April, 2013.					

Table A3.3: Top Ten Contributors to CPI Food Inflation (YoY) in April 2013					
Items/ Contributors		Weights	YoY Change		Weighted Contribution
			Apr-12	Apr-13	
A. Ranked by Weighted Contribution					
1	Milk Fresh	6.68	16.12	9.69	13.41
2	Wheat Flour	4.16	1.84	15.30	11.00
3	Onion	0.55	17.96	116.49	9.70
4	Rice	1.58	12.99	15.25	3.93
5	Cigarette	1.39	11.27	13.45	3.24
6	Tea	0.84	6.76	15.67	2.81
7	Meat	2.43	15.95	4.40	2.34
8	Ready Made Food	1.23	11.40	8.23	2.00
9	Bakery & Confectionary	1.16	10.07	9.56	1.88
10	Beverages	1.20	12.55	8.73	1.74
Total		21.22			52.05
B. Ranked by Percentage Change					
1	Onion	0.55	17.96	116.49	9.70
2	Honey	0.04	10.64	17.25	0.17
3	Tea	0.84	6.76	15.67	2.81
4	Wheat	0.35	1.37	15.64	0.91
5	Wheat Flour	4.16	1.84	15.30	11.00
6	Rice	1.58	12.99	15.25	3.93
7	Wheat Product	0.10	2.39	13.92	0.23
8	Cigarette	1.39	11.27	13.45	3.24
9	Beans	0.03	16.31	12.15	0.07
10	Milk Powder	0.11	18.69	11.81	0.23
Total		9.16			32.28
C. Ranked by Weights					
1	Milk Fresh	6.68	16.12	9.69	13.41
2	Wheat Flour	4.16	1.84	15.30	11.00
3	Meat	2.43	15.95	4.40	2.34
4	Vegetable Ghee	2.07	5.35	-4.31	-1.49
5	Fresh Fruits	1.86	15.93	-11.79	-5.24
6	Cooking Oil	1.75	7.76	5.36	1.48
7	Fresh Vegetable	1.62	4.97	2.17	0.68
8	Rice	1.58	12.99	15.25	3.93
9	Cigarette	1.39	11.27	13.45	3.24
10	Chicken	1.36	22.58	-17.33	-4.90
Total		24.92			24.44
Note: Weighted contribution is estimated by multiplying the weights by the price change of an item; this is then reported as a share in YoY change in CPI Food, which is 5.5 percent in April, 2013.					

Table A3.4: Top Ten Contributors to CPI Non-food Inflation (YoY) in April 2013

Items/ Contributors		Weights	YoY Change		Weighted Contribution
			Apr-12	Apr-13	
A. Ranked by Weighted Contribution					
1	House Rent	21.81	6.59	7.07	21.39
2	Electricity	4.40	0.54	16.39	12.49
3	Text Books	0.57	6.95	48.60	4.88
4	Education	3.94	12.90	6.80	4.17
5	Cotton Cloth	1.73	6.07	14.26	3.82
6	Transport Services	2.70	11.38	7.11	3.72
7	Tailoring	0.88	16.92	13.96	2.39
8	Household Servant	1.04	32.68	11.38	2.13
9	Ready Made Garment	0.97	18.32	13.17	2.09
10	Communication & Apparatus	3.15	-0.77	5.17	2.03
Total		41.21			59.13
B. Ranked by Percentage Change					
1	Text Books	0.57	6.95	48.60	4.88
2	Woolen Readymade Garments	0.40	13.83	19.88	1.30
3	Dopatta	0.44	22.07	17.88	1.38
4	Electricity	4.40	0.54	16.39	12.49
5	Doctor (MBBS) Clinic Fee	0.59	18.89	16.01	1.67
6	Cleaning & Laundering	0.21	17.01	15.57	0.59
7	Cotton Cloth	1.73	6.07	14.26	3.82
8	Tailoring	0.88	16.92	13.96	2.39
9	Hosiery	0.51	17.82	13.91	1.23
10	News Papers	0.19	8.85	13.68	0.41
Total		9.92			30.16
C. Ranked by Weights					
1	House Rent	21.81	6.59	7.07	21.39
2	Electricity	4.40	0.54	16.39	12.49
3	Education	3.94	12.90	6.80	4.17
4	Communication & Apparatus	3.15	-0.77	5.17	2.03
5	Motor Fuel	3.03	28.87	-6.76	-4.08
6	Transport Services	2.70	11.38	7.11	3.72
7	Cotton Cloth	1.73	6.07	14.26	3.82
8	Gas	1.58	29.41	-46.08	-19.71
9	Footwear	1.55	16.15	5.59	1.26
10	Personal Care	1.49	16.84	7.37	1.93
Total		45.39			27.03

Note: Weighted contribution is estimated by multiplying the weights by the price change of an item; this is then reported as a share in YoY change in CPI Non-food, which is 6.0 percent in April, 2013.

Table A4: Distribution of Price Changes (YoY) - Selected CPI Items: April 2013

Groups	Decrease or no change	Subdued increase (Up to 5%)	Moderate increase (5 to 10%)	More than 10% increase
Food & Non-Alcoholic Beverages	Chillies Powd.National 200 Gm, Bottlegourd, Cucumber (Kheera), Chillies Powder Loose, Bananas, Guava	Cooking Oil (Dalda), Mineral Water Nestle 1.5 Litre, Patties (Vegetables), Milk Powder (Loose/Packed, Sweetmeat (Mixed)	Toffee (Hilal), Coffee-Nescafe 75 Gm, Tea Loose Kenya Av.Qlty 250 Gm, Milk Fresh (Unboiled), Vermicelli, Rusk (Papay)	Onion, Tinda, Ginger, Garlic, Ice Cream Walls, Tapal Danedar Tea 200 Gm, Ice, Rice Basmati Sup. Qlty., Milo 200 Gm., Groundnuts (With Shell), Cornflakes Fauji 225 Gm., Honey Langanese 500 Gm., Wheat Flour Fine/Superior
Alcoholic Beverages & Tobacco		Betel Nuts, Betel Leaves	Cigarettes Gold Leaf 20,S	Cigarettes Morven Gold 20,S, Cigarettes Capstan 20,S, Cigarettes K-20,S
Clothing & Footwear	Gents Shoes Paul Bata, Gents Spoung Chappal Bata, Ladies Spoung Chappal Bata, Ladies Sandal Bata, Gents Sandal Bata		Tropical Suiting Law.Pur, Socks Nylon (Pakistani), Shoe Repair Half Sole, Child Shoe Power Lite Bata, Pant Cloth Wash & Wear Av.Qlty, Georgette Av.Qlty	Gents Shoe, Art 1109 Servis, Washing Charges Paint & Shirt, Secondhand Sweater For Men, Brassier Sup. Qlty, Dopatta Cotton Av. Qlty, Lungi/Dhoti(Cotton) Av.Qlty, Dopatta Georgette Av.Qlty, Secondhand Winter Jacket, Tailoring Charges Pant (Men), Shirting Av.Qlty.
Housing, Water, Elect, Gas & other Fuels	Gas Chrg All Over 500 Mmbtu, Gas Chrg Over 300 - 500 Mmbtu, Gas Chrg Overall/ Combined	Sand (Black Pit Sand), Water Charges Per House, Cement (Local), Bajree, Kerosene Oil, Bricks (New) 1st Class	Cement Blocks (6"X8"X12"), Mason (Raj) Wage Rate, Firewood Whole, Carpenter Wage Rate, House Rent For Q-I, House Rent For Q-II	Elect. Charges 01 - 100 Units, Elect. Charges 101 - 300 Units, Elect. Charges Overall/ Combined, Elect. Charges 301 - 1000 Units, Electrician Wage Rate (P/Day), Elect. Charges Above 1000 Units, Electrician Wage Rate(P/Pnt)
Furnishing & Household Equip. Maintenance etc	Tawa Iron (Medium Size) Avg. Qlty, Carpet Plain Av. Qlty, Electric Juicer, Match Box (Small)	Tube Light Philips 40 Watt, Sewing Machine Needle (Singer), Washing Machine (Singer), Pedestal Fan 22" Super Qlty	Tissue Paper Perfumed 100, Harpic, Aluminum Cooking Pan, Washing Powder 1000 Grm (Express), Non Stick Cooking Pan	Boot Polish Cherry/Kiwi 50 MI, Robin Blue (35 Gms), Dinner Set Plastic 72 Pcs, Table Shesham Wood, Water Set Jug+6 Glasses, Finis 500 MI, Elect. Iron Philips, Gizer Large Size 30 Gallon, Dari Cotton (6'X2 1/2')
Health	Amoxil Capsule 250 Mg., Daonil Tab. 5 Mg., Calcium Syrup Sandoz, Polyfax Eye Ointment, Lederlex Syrup	ECG Charges, Betnesol Eye Drops	Dettol (Medium), Urine Test (Dr) Charges, Thermometer China, Brufen Tabs 200-Mg., Betnovate-N Ointment 5 Gm, Sugar Test (Random/Fasting)	Hydriyllin Syrup 120 MI. O.R.S. (Nimcol), Disprin Tab., Trisil Tab., Phenergan Syrup 120 MI. Cac. 1000 Tab, Galxos-D (450 Gm), Panadol Tab. Extra/Plain, Doctor (MBBS) Clinic Fee, Sancos Syrup (50 MI)
Transport	CNG, Minibus Fare Min.Within City, Gas Cylinder S. Size (L.P.G), Petrol Super, Platform Ticket	Train Fare A/C Slp > 500K, Train Fare A/C Slp.101-500, Train Fare Eco. 1-100 Km., Tyre Cycle, Train Fare Eco. 101-500 K	Tyre Car With Tube General, Bus Fare Min (Within City), Bus Fare Max (Within City), Tyre Car W/O Tube, Tyre Puncture Charges	Taxi 4 Seater Fare, Bus Fare Outside City (Non A/C), Cycle Overhauling Charges, Full Tonga Charges, Car Suzuki 1000 Cc, Car Honda Civic 1500 Cc, Car Suzuki 800 Cc (W/O. Ac)
Communication	Postal Envelope Domestic, U.M.S. Reg Charges Min.	Postal Registration Charges, Fax Charges (Local), Telephone Set Av. Qlty, Mobile Cell Charges	Telephone Charges Local Call, Telephone Charges Outside City, Internet Charges, T.C.S. Ch. Min.Within Zone	Postal Envelope for Saudi Arabia
Recreation & Culture	Video Game Sega 16 Byte, Computer CD (Tdk/Imation), English Book BA/B.Sc, TV License Fee Domestic, Weekly "Mag"	Pencil Goldfish/Deer, Ball Pen (Local), Fountain Pen Hero/Wings/China, DVD/VCD Player Panasonic/LG, V.C.P. Panasonic/LG/National	Exercise Book Lined 80/10, Pen Ink Dollor 57 MI Bottle, Urdu Book Class IX/X (T.B.Board), Paper Fool Scape (27"X17"), Eng. Book Ist. Yr Complete Set	English Book Class V1, English Book Class IX or X, Maths Book Cals V (T.B.Board), Urdu Book Class V (T.B.Board), Cinema A/C High Class, Daily "Dawn", Maths Book Class IX or X, Cinema Non-A/C High Class, Daily "Jang", Daily "Nawa-e-Waqt"
Education	MBA Tuition Fee, I.T. Tuition Fees, Coaching Charges for Class XI/ XII Commerce Group	Govt. University Fee MSc/ MA, Coaching Charges for Class XI/ XII Science Group, Govt. College Fee Ist. Year	Coaching Fee for Class IX/ X, Pvt School Fee Eng. Med (Class-V), Pvt School Fee Eng. Med (Class-X)	Govt. Engg. College. Fee Ist Year, Pvt Eng. College Fee (Ist Year), Pvt Med. College Fee MBBS(Ist Year)
Restaurant & Hotels			Chicken Biryani Full/Double, Cooked Dal (Av. Hotel), Bread Tandoori St. Size	Cooked Beef (Av. Hotel), Cooked Mutton (Av. Hotel)
Miscellaneous	Silver Tezabi 24 Ct, Shampoo Sunsilk/Pantene 100 MI	Beauty Cream (Fair & Lovely), Talc Powder Viceroy/ Black Cat, Gold Tezabi 24 Ct, Blade 7-O-Clock Steel (5)	Toilet Soap Lux 95 Gms, Disposable Razor Gillette-II, Toothpowder Dentonic 90 Gms	Wall Clock Quartz Av.Qlty, Purse Ladies (Leather) Av. Qlty, Artificial Jewellery Set, Shaving Charges, Toothpaste Macleans 70 Gms, Hair Oil Amla/ Chambeli, Trunk Medium Size

Table A5: City- wise CPI Inflation by Income Groups, April 2013

	Up to Rs: 8000						Rs 8001- 12000					
	General		Food		Non-Food		General		Food		Non-Food	
	MoM	YoY	MoM	YoY	MoM	YoY	MoM	YoY	MoM	YoY	MoM	YoY
1 Rawalpindi	1.7	7.7	1.5	6.3	1.8	9.4	1.8	7.7	1.5	6.0	2.1	9.6
2 Islamabad	0.7	7.4	0.8	3.7	0.6	12.3	1.0	6.5	1.0	4.1	1.1	9.5
3 Lahore	1.2	5.5	1.6	3.4	0.7	8.6	1.2	5.4	1.7	3.3	0.7	8.0
4 Gujranwala	1.9	4.5	2.6	4.1	1.0	5.0	1.8	3.9	2.5	3.4	1.0	4.5
5 Sialkot	1.8	8.9	2.0	9.0	1.6	8.8	1.7	8.4	1.8	8.5	1.5	8.3
6 Faisalabad	2.1	7.1	3.5	7.4	0.3	6.6	2.0	6.5	3.6	6.8	0.2	6.2
7 Multan	0.5	5.2	0.8	3.9	0.2	7.0	0.7	5.2	1.2	4.2	0.2	6.5
8 Sargodha	2.8	6.7	4.9	5.4	0.6	8.1	2.4	6.3	4.4	5.0	0.5	7.6
9 Bahawalpur	2.0	6.3	2.8	2.7	1.2	10.6	1.9	6.4	2.7	2.8	1.2	10.1
10 Karachi	-0.4	4.8	-0.8	4.9	0.1	4.7	-0.3	4.5	-0.7	4.5	0.1	4.6
11 Hyderabad	0.0	5.1	-0.1	5.0	0.1	5.3	0.0	4.8	-0.1	4.5	0.2	5.2
12 Sukkur	0.8	8.4	0.0	8.4	1.8	8.3	0.9	8.0	0.0	8.0	1.8	7.9
13 Larkana	3.3	10.2	4.2	7.5	2.3	13.5	3.3	10.5	4.3	8.4	2.2	12.7
14 Peshawar	0.8	6.3	0.0	2.9	1.9	10.5	1.1	6.4	0.2	3.0	1.9	10.2
15 Bannu	0.7	6.8	0.1	6.4	1.4	7.4	0.6	7.1	-0.1	6.3	1.3	8.0
16 Quetta	1.4	5.1	2.0	2.4	0.7	8.6	1.1	5.0	1.6	2.2	0.6	8.4
17 Khuzdar	-1.9	4.5	-3.9	2.2	0.5	7.3	-1.8	4.8	-3.6	2.3	0.0	7.4

	Rs 12001-18000						Rs 18001-35000					
	General		Food		Non-Food		General		Food		Non-Food	
	MoM	YoY	MoM	YoY	MoM	YoY	MoM	YoY	MoM	YoY	MoM	YoY
1 Rawalpindi	2.0	6.8	1.8	6.1	2.2	7.5	2.1	6.8	2.3	5.7	2.0	7.7
2 Islamabad	1.2	5.5	1.3	3.9	1.1	7.1	1.2	5.7	1.4	3.7	1.0	7.4
3 Lahore	1.3	4.5	1.7	3.7	0.8	5.4	1.1	5.0	1.7	3.9	0.7	6.1
4 Gujranwala	1.8	2.7	2.4	3.3	1.1	2.2	1.6	2.9	2.6	2.7	0.8	3.0
5 Sialkot	1.7	7.9	1.9	9.1	1.5	6.6	1.5	7.6	1.7	8.6	1.3	6.7
6 Faisalabad	2.0	5.1	3.5	6.5	0.5	3.7	1.7	4.9	3.5	6.0	0.1	4.0
7 Multan	0.9	4.1	1.5	4.1	0.3	4.2	1.1	4.6	2.2	4.0	0.3	5.1
8 Sargodha	2.2	5.1	4.1	4.4	0.5	5.7	2.0	5.2	4.2	3.8	0.3	6.2
9 Bahawalpur	1.9	5.5	2.5	2.7	1.3	8.1	1.7	7.0	2.7	2.8	1.0	10.3
10 Karachi	-0.3	3.5	-0.7	4.3	0.1	2.7	-0.3	3.9	-0.7	4.3	0.1	3.6
11 Hyderabad	0.0	3.6	0.0	4.3	0.1	2.8	0.1	3.9	0.2	4.1	0.0	3.7
12 Sukkur	1.0	7.0	0.2	8.2	1.8	5.9	1.1	7.5	0.6	8.5	1.6	6.7
13 Larkana	3.3	9.7	4.2	8.8	2.4	10.5	3.2	9.8	4.5	9.6	2.2	9.9
14 Peshawar	1.3	5.4	0.6	2.9	2.0	7.8	1.6	5.5	0.9	2.6	2.2	7.9
15 Bannu	0.9	6.7	0.1	6.5	1.6	7.0	1.0	7.2	0.2	6.4	1.6	7.9
16 Quetta	1.1	3.8	1.6	1.9	0.6	5.7	1.0	4.0	1.7	1.5	0.5	6.3
17 Khuzdar	-1.4	5.0	-3.1	2.7	0.2	7.2	-1.2	5.6	-3.0	2.4	0.3	8.3

	Above Rs 35000						Combined					
	General		Food		Non-Food		General		Food		Non-Food	
	MoM	YoY	MoM	YoY	MoM	YoY	MoM	YoY	MoM	YoY	MoM	YoY
1 Rawalpindi	2.1	6.3	2.8	5.7	1.8	6.6	2.1	6.6	2.5	5.8	1.8	7.1
2 Islamabad	1.3	5.7	2.0	4.7	1.0	6.2	1.3	5.8	1.9	4.5	0.9	6.9
3 Lahore	1.0	5.1	1.6	4.0	0.6	5.7	1.1	5.0	1.6	3.8	0.6	5.9
4 Gujranwala	1.4	2.2	2.6	2.0	0.8	2.3	1.6	2.8	2.5	2.9	1.0	2.7
5 Sialkot	1.4	6.2	1.7	7.5	1.2	5.5	1.5	7.1	1.8	8.3	1.3	6.2
6 Faisalabad	1.4	3.6	3.7	5.6	0.1	2.6	1.7	4.8	3.6	6.3	0.4	3.7
7 Multan	1.0	4.2	2.5	4.9	0.2	3.9	0.9	4.3	1.9	4.4	0.2	4.3
8 Sargodha	1.4	5.1	3.5	3.6	0.5	5.8	2.0	5.3	4.1	4.3	0.7	5.9
9 Bahawalpur	1.6	7.5	2.8	3.3	1.1	9.5	1.8	6.6	2.7	3.0	1.2	9.1
10 Karachi	-0.2	4.8	-0.7	4.1	0.0	5.1	-0.3	4.4	-0.7	4.2	0.1	4.6
11 Hyderabad	0.2	3.3	0.5	3.8	0.0	3.1	0.1	3.7	0.2	4.2	0.0	3.3
12 Sukkur	1.0	6.9	0.7	8.9	1.1	5.9	1.0	7.2	0.4	8.5	1.4	6.3
13 Larkana	2.8	8.7	4.4	8.7	2.0	8.7	3.2	9.6	4.3	8.7	2.4	10.2
14 Peshawar	1.8	5.1	1.6	2.6	1.8	6.3	1.5	5.3	0.8	2.8	1.9	7.1
15 Bannu	0.3	6.5	0.4	6.8	0.2	6.3	0.7	6.9	0.2	6.5	1.1	7.2
16 Quetta	0.9	3.9	1.8	1.8	0.5	5.0	1.0	3.9	1.7	1.9	0.6	5.5
17 Khuzdar	-0.6	5.4	-1.9	2.0	0.0	7.0	-1.5	5.0	-3.3	2.4	-0.3	6.8

Table A6: City- wise CPI Inflation (YoY) April, 2013							
	High inflation cities				Low inflation cities		
	General	Food	Non-food		General	Food	Non-food
Mithi	11.0	4.7	15.3	Abbotabad	5.5	6.8	4.7
D.G. Khan	9.9	7.1	12.0	Peshawar	5.3	2.8	7.1
Larkana	9.6	8.7	10.2	Dera Mrd.Jamali	5.3	3.7	6.5
Mardan	8.9	7.3	9.8	Sargodha	5.3	4.3	5.9
Loralai&Cantt	8.8	8.8	8.8	Jhang	5.2	1.6	7.5
Gawadar	8.7	11.3	7.0	Attock	5.1	4.8	5.3
Bahawalnagar	8.4	7.1	9.3	Jehlum	5.0	3.8	5.8
Mianwali	8.4	4.3	11.3	Lahore	5.0	3.8	5.9
Sahiwal	8.3	7.6	8.8	Khuzdar	5.0	2.4	6.8
Vehari	7.9	8.8	7.3	Faisalabad	4.8	6.3	3.7
Nawabshah	7.7	6.4	8.5	Mir Pur Khas	4.6	2.4	6.1
D.I.Khan	7.6	6.2	8.6	Karachi	4.4	4.2	4.6
Rahim Yar Khan	7.4	5.6	8.8	Multan	4.3	4.4	4.3
Sukkur	7.2	8.5	6.3	Quetta	3.9	1.9	5.5
Mingora	7.1	3.9	9.3	Hyderabad	3.7	4.2	3.3
Sialkot	7.1	8.3	6.2	Gujranwala	2.8	2.9	2.7
Bannu	6.9	6.5	7.2				
Turbat	6.7	6.0	7.1				
Bahawalpur	6.6	3.0	9.1				
Rawalpindi	6.6	5.8	7.1				
Muzaffargarh	6.4	6.1	6.6				
Wazirabad	6.1	7.1	5.4				
Islamabad	5.8	4.5	6.9				
Dadu	5.8	6.4	5.4				
Note: High inflation refers to equal or above average inflation, and low inflation refers to below average							

Table A7: Income Group-wise Inflation (percent)

	MoM			YoY		
	Apr-12	Mar-13	Apr-13	Apr-12	Mar-13	Apr-13
<u>Up to Rs. 8000</u>						
General	1.7	0.5	1.1	9.9	7.6	7.0
Food	2.0	0.5	1.1	9.0	7.1	6.1
Non-food	1.3	0.4	1.0	11.0	8.4	8.1
<u>Rs. 8001- 12000</u>						
General	1.7	0.4	1.1	10.2	8.4	7.7
Food	2.1	0.5	1.2	9.7	6.7	5.8
Non-food	1.3	0.4	1.0	10.8	10.2	9.8
<u>Rs. 12001- 18000</u>						
General	1.8	0.4	1.1	10.3	8.0	7.3
Food	2.1	0.5	1.3	10.2	6.6	5.6
Non-food	1.4	0.4	0.9	10.4	9.5	9.0
<u>Rs. 18001- 35000</u>						
General	1.8	0.4	1.1	11.0	6.1	5.4
Food	2.2	0.5	1.4	10.7	6.3	5.5
Non-food	1.4	0.3	0.9	11.1	5.9	5.3
<u>Above Rs. 35000</u>						
General	1.9	0.4	1.1	12.1	5.3	4.5
Food	2.2	0.5	1.5	11.7	6.0	5.2
Non-food	1.7	0.3	0.8	12.4	5.0	4.1
<u>All income groups</u>						
General	1.8	0.4	1.1	11.3	6.6	5.8
Food	2.2	0.5	1.4	10.7	6.3	5.5
Non-food	1.6	0.3	0.9	11.6	6.7	6.0

Table A8: SPI Item-wise Price Movements

Sr.No.	Items	Unit	Prices Apr-13	Percentage change	
				YoY	MoM
1	Wheat	10Kg.	316.5	15.6	-5.5
2	Wheat Flour Bag	10Kg.	351.6	13.3	-4.0
3	Rice Basmati Broken	Kg.	71.0	14.3	0.7
4	Rice Irri-6	Kg.	51.2	9.2	0.6
5	Bread Plain Med. Size (340-400 Gm.)	Each	35.5	13.3	0.1
6	Beef	Kg.	271.2	3.9	0.8
7	Mutton	Kg.	530.3	6.1	1.9
8	Chicken Live (Farm)	Kg.	136.5	-18.0	4.6
9	Milk Fresh	Litr	65.9	9.4	0.4
10	Curd	Kg.	76.2	8.6	0.5
11	Milk Powdered Nido	500G	290.0	8.1	0.0
12	Egg Hen (Farm)	Doz.	77.4	6.8	-12.7
13	Mustard Oil	Kg.	184.9	0.5	-1.2
14	Cooking Oil (Tin)	2.5Ltr	529.6	3.4	0.3
15	Veg. Ghee (Tin)	2.5Kg.	505.0	-1.4	0.0
16	Veg. Ghee Loose	Kg.	156.0	-10.5	-1.2
17	Bananas	Doz.	63.6	-17.6	1.3
18	Masoor Pulse Washed	Kg.	101.4	0.5	1.0
19	Moong Pulse Washed	Kg.	114.8	-6.3	0.6
20	Mash Pulse Washed	Kg.	129.2	-8.9	-1.2
21	Gram Pulse Washed	Kg.	88.0	-10.8	-7.9
22	Potatoes	Kg.	20.3	-13.4	-2.2
23	Onions	Kg.	51.7	102.0	17.1
24	Tomatoes	Kg.	47.8	-4.9	-15.0
25	Sugar	Kg.	53.1	-4.4	0.8
26	Gur	Kg.	72.7	5.2	0.4
27	Salt Powdered Loose (Lahori)	Kg.	8.9	6.7	0.4
28	Red Chillies Powder Loose	Kg.	222.5	-27.8	-4.3
29	Garlic	Kg.	137.9	43.2	0.7
30	Tea (Yellow Label)	200Gm.	161.5	13.6	3.4
31	Cooked Beef Plate	Each	70.9	12.3	0.4
32	Cooked Dal Plate	Each	41.3	7.7	1.8
33	Tea Prepared (Sada)	Cup	15.7	5.7	2.0
34	Cigarettes K-2 (20'S)	20'S	32.3	9.9	0.0
35	Long Cloth (Coarse Latha)	Mtr.	166.4	24.6	7.3
36	Shirting	Mtr.	132.3	17.1	2.6
37	Lawn	Mtr.	178.2	17.4	5.3
38	Georgette (Voil Printed)	Mtr.	106.0	13.2	1.7
39	Sandal Gents Bata	Pair	599.0	20.0	0.0
40	Chappal Spong. Bata (Gents)	Pair	179.0	0.0	0.0
41	Sandal Ladies Bata	Pair	499.0	25.1	0.0
42	Electric Charges 1-50	Unit	2.0	7.0	0.0
43	Gas Charges upto 3.3719	Mmbtu	123.1	-13.7	0.0
44	Kerosene	Litr	117.4	1.6	-1.0
45	Firewood	40Kg	503.7	6.8	-0.3
46	Energy Savor 14 Watts	Each	157.3	8.7	1.1
47	Washing Soap (200-250 Gm.)	Cake	21.4	9.4	0.4
48	Match Box	Each	1.1	3.8	0.9
49	Petrol	Litr	103.6	-0.9	-0.7
50	Diesel	Litr	109.7	1.6	-0.5
51	L.P.G.(11 Kg Cylinder.)	Each	1356.0	-4.4	-7.2
52	Tele. Local Call	Call	3.9	9.7	0.0
53	Bath Soap Lifebuoy (Standard)	Cake	32.0	1.4	0.0
Maximum				102.0	17.1
Median				6.7	0.3
Minimum				-27.8	-15.0

Table A9: Distribution of Price Changes (YoY) - WPI Items: April 2013

Groups	Decrease or no change	Subdued increase (Up to 5%)	Moderate increase (5 to 10%)	More than 10% increase
Agriculture Forestry & Fishery Products	Poultry, Pulses, Edible Roots/Potatoes, Cotton Seeds, Sugar Crops, Fresh Fruits	Sorghum/Jowar, Raw Animal Material/Wool, Hides and Fur Skins, Raw, Other Oil Seeds	Milk from Bovine Animals, Dry Fruits, Unmanufactured Tobacco	Fish Live Fresh or Chilled, Fibre Crops, Wheat, Eggs, Rice, Stimulant and Spice Crops, Maize, Vegetables, Fuel Wood in Logs, Millet/Bajra
Ores & Minerals, Electricity Gas & Water	Natural Gas Liquefied			Electrical Energy, Coal not Agglomerated, Salt & Pure Sodium Chloride
Food Products, Beverages and Tobacco, Textiles, Apparel and Leather Products	Synthetic Carpets, Spices, Other Cereal Flour, Nylon Yarn, Sugar Refined, Vegetable Ghee, Chocolate, Other Food Products, Leather without Hairs, Other Leather N.E.C	Quilts, Meat of Animals, Vegetable Oil Refined, Mineral Water, Milk and Cream in Solid Form, Woolen Carpets, Beverages, Sugar Confectionary, Cotton Fabrics, Fruit Juices	Blended Yarn, Footwear, Ice Cream, Dairy Products N.E.C, Vegetables & Fruit Juices, Other Fabrics	Bed Sheets, Woven Fabrics, Oil Cakes, Tobacco Products, Wheat Flour, Blankets, Hosiery Products, Dried Fruits & Nuts, Ready Made Garments, Cotton Yarn, Processed Liquid Milk, Coffee and Tea, Silk and Rayon Fabrics, Towels
Other Transportable Goods except Metal Products, Machinery and Equipments	Furnace Oil, Other Glass Articles, Fertilizers, Diesel Oil, Insecticides, Kerosene Oil, Motor Sprit, Coke	Mobil Oil, Auto Tyres, Dying Materials	Chemicals, Soaps & Detergent, Bed Foams, Cement, Timber, Plastic Products, Bricks Blocks and Tiles	Printing Paper, Pesticides, Paints & Varnishes, Hard Board, Matches, Glass Sheets, Medicines, Ceramics and Sanitary
Metal Product Machinery & Equipment	Tractors, Radio and Television, Electrical Wires, Steel Bars & Sheets, Pig Iron, Engines and Motors, Vacuum Pumps, Concrete Mixer, Lathe Machines	Air Conditioners, Steel Products, Pipe Fittings, Refrige, Wash & Sew Mach, Iron, Fan, Bicycles, Cultivators, Lighting Equipments, Motor Cycles	Motor Vehicles	Chuff Cutter

Table A10: Consumer Price Index Numbers by Major Groups and Composite Commodities				
Items and specification	Weights	Index		
		Apr-12	Mar-13	Apr-13
General	100.00	168.00	175.82	177.74
Food & Non-Alcoholic Beverages.	34.83	188.00	194.76	197.62
1 Wheat	0.35	163.51	200.08	189.08
2 Wheat Flour	4.16	168.13	199.68	193.86
3 Wheat Product	0.10	164.35	189.66	187.22
4 Besan	0.15	214.92	225.29	213.94
5 Rice	1.58	158.65	182.08	182.84
6 Cereals	0.16	192.61	212.48	213.49
7 Bakery & Confectionary	1.16	166.14	180.71	182.03
8 Nimco	0.46	189.59	201.85	202.35
9 Meat	2.43	212.52	220.01	221.88
10 Chicken	1.36	202.52	159.82	167.42
11 Fish	0.30	197.20	199.17	202.61
12 Milk Fresh	6.68	201.84	220.22	221.39
13 Milk Product	0.63	199.07	211.92	212.73
14 Milk Powder	0.11	168.79	186.98	188.72
15 Egg	0.46	148.11	188.87	163.02
16 Mustard Oil	0.10	158.20	162.55	159.80
17 Cooking Oil	1.75	153.10	161.13	161.31
18 Vegetable Ghee	2.07	162.81	157.29	155.79
19 Dry Fruits	0.25	198.12	213.13	211.97
20 Fresh Fruits	1.86	232.03	181.99	204.67
21 Pulse Masoor	0.27	146.30	145.84	147.84
22 Pulse Moong	0.23	238.74	221.64	218.26
23 Pulse Mash (Washed)	0.21	204.38	190.74	186.25
24 Pulse Gram	0.24	216.49	217.25	202.23
25 Gram Whole	0.16	225.40	212.21	201.43
26 Beans	0.03	194.89	217.96	218.55
27 Potatoes	0.49	154.38	140.07	131.30
28 Onion	0.56	146.61	226.51	317.39
29 Tomatoes	0.46	187.81	212.43	154.84
30 Fresh Vegetable	1.62	187.39	158.27	191.46
31 Sugar	1.04	201.57	188.76	191.97
32 Gur	0.02	219.17	218.79	220.37
33 Honey	0.04	218.72	256.26	256.45
34 Sweet Meet	0.25	200.06	208.42	208.42
35 Beverages	1.20	162.19	174.11	176.35
36 Jam, Tomato Ketchup & Pickle	0.25	171.32	181.88	182.85
37 Condiments	0.27	210.58	215.06	215.20
38 Spices	0.54	272.99	226.61	221.37
39 Tea	0.84	208.58	235.31	241.26
Alcoholic Beverages, Tobacco	1.41	168.74	191.16	191.16
40 Cigarette	1.39	168.63	191.31	191.31
41 Betel Leaves & Nuts	0.02	175.76	182.09	182.06
Clothing & Footwear	7.57	161.68	179.42	182.25
42 Cotton Cloth	1.73	150.89	165.16	172.40
43 Woolen Cloth	0.88	182.30	201.30	203.59
44 Ready Made Garment	0.97	159.03	178.55	179.98
45 Woolen Readymade Garments	0.40	160.53	192.57	192.45
46 Hosiery	0.51	169.17	189.51	192.69
47 Dopatta	0.44	170.66	197.36	201.18
48 Cleaning & Laundering	0.21	174.86	200.53	202.08

Table A10: Consumer Price Index Numbers by Major Groups and Composite Commodities

Items and specification	Weights	Index		
		Apr-12	Mar-13	Apr-13
49 Tailoring	0.88	188.75	213.30	215.10
50 Footwear	1.55	141.80	149.55	149.73
Housing, Water, Elect, Gas & Other Fuel	29.41	149.07	152.91	154.54
51 House Rent	21.81	135.02	142.46	144.57
52 Construction Input Item	0.56	192.40	206.83	208.77
53 Construction Wage Rate	0.33	160.84	176.59	178.65
54 Water Supply	0.50	132.90	138.79	138.79
55 Electricity	4.40	168.71	196.37	196.37
56 Gas	1.58	264.42	142.58	142.58
57 Kerosene Oil	0.01	266.00	277.05	273.79
58 Fire Wood Whole	0.23	225.67	246.28	247.13
Furnished H.Hold Equip. & Maint. Etc	4.21	168.78	182.47	183.59
59 Furniture	0.33	159.39	173.02	174.01
60 Household Textile	0.65	165.26	178.21	178.84
61 Household Equipment	0.59	152.27	159.14	161.13
62 Utensils	0.32	162.84	179.78	182.00
63 Plastic Products	0.25	169.80	177.87	179.07
64 Washing Soap & Detergent	0.79	185.11	198.55	199.93
65 Sewing Needle & Dry Cell	0.15	144.15	152.41	153.11
66 Household Servant	1.04	175.17	194.63	195.10
67 Marriage Hall Charges	0.08	181.77	194.52	195.33
Health	2.19	141.74	158.49	159.34
68 Drug Medicine	1.27	126.54	140.18	140.48
69 Medical Equipment	0.01	181.03	201.89	203.09
70 Doctor (MBBS) Clinic Fee	0.59	171.60	196.98	199.07
71 Medical Test	0.32	145.82	158.83	159.58
Transport	7.20	185.94	189.11	187.70
72 Motor Vehicle	0.66	144.48	155.51	155.55
73 Motor Vehicle Accessories	0.24	199.88	212.43	213.27
74 Motor Fuel	3.03	194.29	182.54	181.16
75 Mechanical Service	0.46	175.38	186.18	187.08
76 Motor Vehicle Tax	0.11	152.02	153.74	153.74
77 Transport Services	2.70	188.65	204.54	202.08
Communication	3.22	122.36	128.63	128.64
78 Postal Services	0.07	168.53	174.59	174.59
79 Communication & Apparatus	3.15	121.39	127.66	127.67
Recreation & Culture	2.02	146.51	170.63	175.62
80 Recreation & Culture	0.86	120.03	122.28	122.39
81 Text Books	0.57	171.48	238.40	254.82
82 News Papers	0.19	149.97	170.49	170.49
83 Stationery	0.40	166.61	178.51	180.09
Education	3.94	151.36	157.68	161.66
84 Education	3.94	151.36	157.68	161.66
Restaurants And Hotels	1.23	192.76	208.05	208.62
85 Ready Made Food	1.23	192.76	208.05	208.62
Miscellaneous Goods And Services	2.76	188.70	202.64	202.51
86 Personal Care	1.49	170.72	182.97	183.31
87 Cosmetics	0.39	146.27	150.40	151.21
88 Blades	0.03	166.64	174.26	174.81
89 Personal Equipments	0.84	240.72	262.37	260.98

Table A11: Wholesale Price Index Numbers by Major Groups and Composite Commodities			
Items and Specifications	Index		
	Apr-12	Mar-13	Apr-13
General	185.48	196.57	198.09
Agriculture Forestry & Fishery	183.68	199.84	205.04
1 Wheat	168.38	207.41	197.38
2 Maize	163.16	182.35	184.91
3 Rice	149.83	167.72	171.91
4 Sorghum/Jowar	215.59	223.15	223.78
5 Millet/Bajra	157.66	175.35	174.63
6 Vegetables	212.58	170.90	240.68
7 Fresh Fruits	212.67	205.38	209.37
8 Dry Fruits	174.24	184.10	188.91
9 Cotton Seeds	174.03	166.12	170.47
10 Other Oil Seeds	167.61	172.68	168.04
11 Edible Roots/ Potatoes	134.95	125.42	120.83
12 Stimulant And Spice Crops	170.44	188.95	193.64
13 Pulses	225.64	193.65	190.02
14 Sugar Crops	272.71	267.92	267.92
15 Fibre Crops	173.25	215.82	219.37
16 Unmanufactured Tobacco	166.99	175.15	175.97
17 Poultry	206.42	153.47	167.35
18 Milk From Bovine Animals	194.99	212.51	212.51
19 Eggs	139.52	195.37	163.42
20 Raw Animal Material/Wool	136.50	137.58	139.39
21 Hides And Fur Skins, Raw	138.42	140.54	141.22
22 Fuel Wood In Logs	201.97	220.21	228.51
23 Fishes Live Fresh Or Chilled	154.52	197.25	209.12
Ores/Minerals, Gas & Elect.	188.10	214.54	213.96
24 Coal Not Agglomerated	180.39	223.53	223.53
25 Natural Gas Liquefied	210.36	202.57	201.27
26 Salt & Pure Sodium Chloride	164.89	187.29	195.37
27 Electrical Energy	166.13	226.10	226.10
Food, Beverages, Tobacco, Textiles	177.32	190.65	191.67
28 Meat Of Animals	223.72	230.45	231.85
29 Vegetables & Fruit Juices	177.93	189.33	189.33
30 Dried Fruits & Nuts	196.91	222.50	222.72
31 Fruit Juices	157.86	158.79	159.33
32 Vegetable Oil Refined	154.59	159.62	159.96
33 Vegetable Ghee	143.93	140.73	140.80
34 Oil Cakes	135.09	164.73	164.12
35 Processed Liquid Milk	187.39	208.43	208.43
36 Milk And Cream In Solid Form	166.51	171.22	171.40
37 Ice Cream	161.68	173.49	173.49
38 Dairy Products N.E.C	197.89	210.68	211.73
39 Wheat Flour	154.79	182.24	178.37
40 Other Cereal Flour	191.42	183.27	173.25
41 Sugar Refined	207.78	196.65	201.52
42 Chocolate	100.26	99.19	99.19
43 Sugar Confectionary	100.40	102.28	102.28
44 Coffee And Tea	195.35	212.31	217.19
45 Spices	303.48	266.67	251.26
46 Other Food Products	318.94	319.06	316.35
47 Mineral Water	165.82	168.32	170.88
48 Beverages	135.24	137.86	137.86
49 Tobacco Products	174.93	208.80	208.80
50 Cotton Yarn	193.36	215.58	216.90
51 Nylon Yarn	195.64	185.28	187.63
52 Blended Yarn	183.85	199.23	199.68
53 Woven Fabrics	171.55	208.98	208.98
54 Cotton Fabrics	175.67	174.17	178.26
55 Other Fabrics	161.72	165.62	169.83

Table A11: Wholesale Price Index Numbers by Major Groups and Composite Commodities

Items and Specifications		Index		
		Apr-12	Mar-13	Apr-13
56	Silk And Rayon Fabrics	141.18	154.21	156.87
57	Towels	189.19	203.06	210.01
58	Blankets	161.28	185.21	185.21
59	Bed Sheets	174.13	208.11	212.73
60	Quilts	147.05	153.32	153.32
61	Woolen Carpets	103.57	106.55	106.55
62	Synthetic Carpets	144.07	114.41	114.41
63	Hosiery Products	163.35	181.47	185.14
64	Ready Made Garments	126.92	138.19	142.83
65	Leather With Out Hairs	109.83	109.83	109.83
66	Other Leather N.E.C	122.57	122.57	122.57
67	Footwear's	128.50	139.49	139.49
Other Transportable Goods		208.92	206.04	205.35
68	Timber	144.14	152.79	152.98
69	Printing Paper	133.29	166.52	168.66
70	Hard Board	158.33	187.50	187.50
71	Coke	163.45	163.45	163.45
72	Motor Sprit	174.61	172.73	172.82
73	Diesel Oil	265.00	261.36	257.92
74	Kerosene Oil	266.52	264.94	262.00
75	Furnace Oil	220.75	178.20	174.79
76	Mobil Oil	178.98	187.12	187.49
77	Chemicals	145.98	156.83	160.14
78	Dying Materials	104.26	107.23	107.23
79	Fertilizers	270.34	261.17	261.31
80	Pesticides	165.53	197.49	197.49
81	Insecticides	125.52	122.97	123.20
82	Paints & Varnishes	202.50	236.93	241.08
83	Medicines	120.38	139.93	139.66
84	Soaps & Detergent	155.89	168.46	170.95
85	Auto Tyres	175.62	181.47	181.43
86	Plastic Products	186.58	192.40	196.56
87	Glass Sheets	172.43	192.74	201.02
88	Other Glass Articles	216.51	198.72	199.53
89	Ceramics And Sanitary	144.10	161.77	161.77
90	Bricks Blocks And Tiles	171.12	177.53	180.18
91	Cement	175.39	188.35	188.24
92	Bed Foams	131.00	142.83	142.83
93	Matches	120.63	133.50	142.72
Metal Product Machinery & Equip		156.18	158.87	159.93
94	Pig Iron	128.97	128.97	128.97
95	Steel Bars & Sheets	135.01	132.16	133.52
96	Pipe Fittings	142.31	141.71	148.98
97	Steel Products	158.78	161.94	166.25
98	Engines And Motors	109.07	109.07	109.07
99	Vacuum Pumps	115.39	115.39	115.39
100	Air Conditioners	168.43	172.67	176.43
101	Cultivators	184.66	189.23	189.23
102	Chuff Cutter	131.08	144.94	144.94
103	Tractors	172.36	161.96	161.96
104	Lathe Machines	147.68	147.68	147.68
105	Concrete Mixer	138.83	138.83	138.83
106	Refrige,Wash& Sew Mach, Iron,Fan	164.86	167.15	171.52
107	Electrical Wires	165.49	159.57	159.57
108	Lighting Equipments	145.49	148.26	148.26
109	Radio And Television	132.73	126.49	126.49
110	Motor Vehicles	160.28	173.75	173.75
111	Motor Cycles	124.02	125.07	125.07
112	Bicycles	171.52	177.09	177.09

Table A12: Price Indices - Base 2007-08 = 100								
Period		CPI			WPI			SPI *
		Overall	Food	Non-food	Overall	Food	Non-Food	
2008-09		117.03	123.12	113.38	118.93	119.68	118.45	123.26
2009-10		128.85	139.05	122.73	135.40	136.85	134.48	139.84
2010-11		146.45	164.10	135.87	164.17	159.26	167.28	164.02
2011-12		162.57	182.20	150.80	181.28	181.32	181.26	178.67
2010	Jul	137.62	149.33	130.60	147.38	149.13	146.27	152.10
	Aug	140.63	156.70	131.00	150.19	152.48	148.74	155.44
	Sep	143.49	163.96	131.22	152.74	155.52	150.98	161.00
	Oct	144.90	163.90	133.51	155.40	156.03	155.00	163.01
	Nov	146.34	166.59	134.20	159.34	157.03	160.81	167.56
	Dec	145.90	163.69	135.24	162.48	155.88	166.67	166.52
2011	Jan	147.67	166.52	136.37	165.58	159.08	169.70	166.96
	Feb	146.85	163.56	136.83	168.82	158.33	175.47	164.99
	Mar	148.91	167.10	138.01	174.41	162.92	181.70	166.81
	Apr	150.99	169.25	140.05	178.69	165.46	187.09	167.83
	May	151.33	168.76	140.88	176.97	167.15	183.20	167.98
	Jun	152.78	169.88	142.53	177.98	172.14	181.68	168.09
	Jul	154.72	174.80	142.68	177.26	175.45	178.41	171.45
	Aug	156.89	177.32	144.65	178.24	178.67	177.97	173.86
	Sep	158.50	180.16	145.52	178.68	181.88	176.65	175.02
	Oct	160.79	183.07	147.44	179.34	182.82	177.13	176.45
	Nov	161.25	183.26	148.06	178.39	181.48	176.43	177.53
	Dec	160.12	179.21	148.67	176.01	178.29	174.57	175.04
2012	Jan	162.58	181.90	151.00	179.99	178.95	180.65	178.25
	Feb	163.07	180.69	152.51	180.99	177.56	183.17	178.63
	Mar	164.98	183.46	153.90	182.20	180.41	183.34	180.79
	Apr	168.00	187.43	156.35	185.48	184.45	186.13	184.03
	May	169.93	187.75	159.25	189.46	186.57	191.29	184.88
	Jun	169.99	187.35	159.58	189.37	189.36	189.37	188.14
	Jul	169.57	190.72	156.89	190.05	193.92	187.59	183.98
	Aug	171.09	192.47	158.27	191.99	195.30	189.89	186.47
	Sep	172.44	193.80	159.64	192.66	195.81	190.66	188.21
	Oct	173.10	193.66	160.77	192.88	196.21	190.77	187.32
	Nov	172.42	193.03	160.07	192.16	193.02	191.61	187.35
	Dec	172.82	192.97	160.74	192.98	195.49	191.39	187.95
2013	Jan	175.70	196.58	163.19	195.39	198.81	193.22	190.89
	Feb	175.11	194.05	163.76	196.06	197.22	195.32	190.79
	Mar	175.82	195.06	164.29	196.57	196.02	196.92	192.01
	Apr	177.74	197.74	165.75	198.09	199.00	197.51	192.02

*: all groups combined

Table A13: International Commodity Prices/ Indices

	Jan-13	Feb-13	Mar-13	Apr-13
Energy				
Crude Oil (US\$ per barrel) *	105.0	107.7	102.6	98.9
IMF Energy Index (2005 = 100)	194.3	198.7	190.4	184.4
WB Energy Index (2005 = 100) @	187.8	192.0	183.7	178.3
Food				
Rice (\$/MT)	573.4	574.1	564.5	553.7
Wheat (\$/MT)	335.5	318.9	309.9	308.7
Sugar (US cent/ pound)	18.9	18.2	18.3	17.7
Palm Oil (\$/MT)	776.5	792.4	771.9	756.5
Soybean Oil (\$/MT)	1,122.8	1,132.0	1,102.9	1,086.8
Non-Food Non-Energy				
Cotton Outlook 'A' Index #	85.5	89.7	94.5	92.6
IMF Metal Price Index (2005 = 100)	202.3	205.2	190.6	183.6
Copper (\$/MT)	8,053.7	8,060.9	7,652.4	7,221.2
Aluminum (\$/MT)	2,037.6	2,053.6	1,911.3	1,861.0
Iron Ore (\$ cents/dry MT)	150.5	154.6	139.9	137.4
Tin (\$/MT)	24,598.9	24,211.7	23,302.0	21,589.6
Nickle (\$/MT)	17,494.1	17,690.1	16,731.7	15,629.3
Zinc (\$/MT)	2,031.4	2,128.7	1,929.2	1,855.6
Lead (\$/MT)	2,334.5	2,365.8	2,173.4	2,024.4
Uranium (\$/MT)	42.8	43.4	42.3	41.4
DAP (\$/MT)	485.0	482.3	507.5	508.3
Urea (\$/MT)	393.4	411.5	385.0	361.5

Source: IMF and World Bank

\$/MT = US\$ per metric ton.

* Crude Oil (Petroleum), simple average of three spot prices; Dated Brent, West Texas Intermediate, and the Dubai fateh

Middling 1-3/32 inch staple, Liverpool Index "A", average of the cheapest Cts/lb five of fourteen styles, CIF Liverpool (Cotton Outlook, Liverpool). From January 1968 to May 1981 strict middling 1-1/16 inch staple. Prior to 1968, Mexican 1-1/16.2/

DAP: Diammonium Phosphate

@ World Bank commodity index for low and middle income countries

Table 14. CPI Data Series Original and Seasonally Adjusted

Original Series				
Period	FY10	FY11	FY12	FY13
Jul	122.46	137.62	154.72	169.57
Aug	124.68	140.63	156.88	171.09
Sep	124.89	143.49	158.50	172.44
Oct	125.64	144.90	160.79	173.10
Nov	127.30	146.34	161.25	172.42
Dec	126.37	145.90	160.12	172.82
Jan	129.64	147.67	162.58	175.70
Feb	130.13	146.85	163.07	175.11
Mar	131.75	148.91	164.98	175.82
Apr	134.16	150.99	168.00	177.74
May	134.34	151.33	169.93	
Jun	134.83	152.78	169.99	
Seasonally Adjusted Series				
Jul	122.23	137.41	154.49	169.29
Aug	123.95	139.76	155.86	169.94
Sep	124.11	142.48	157.36	171.22
Oct	124.63	143.61	159.30	171.52
Nov	126.72	145.66	160.51	171.62
Dec	127.09	146.78	161.13	173.95
Jan	129.84	147.85	162.72	175.80
Feb	131.10	148.06	164.46	176.63
Mar	132.50	149.84	166.03	176.95
Apr	134.17	151.00	167.94	177.64
May	134.73	151.82	170.53	
Jun	135.38	153.42	170.72	

Table 15. CPI Food Data Series Original and Seasonally Adjusted

Original Series				
Period	FY10	FY11	FY12	FY13
Jul	130.97	149.33	174.80	190.72
Aug	134.95	156.70	177.32	192.47
Sep	135.20	163.96	180.16	193.80
Oct	135.98	163.91	183.07	193.66
Nov	138.87	166.59	183.26	193.03
Dec	135.81	163.69	179.21	192.97
Jan	138.54	166.52	181.90	196.58
Feb	139.06	163.56	180.69	194.05
Mar	141.71	167.10	183.46	195.06
Apr	145.24	169.25	187.43	197.74
May	145.69	168.77	187.75	
Jun	146.63	169.88	187.35	
Seasonally Adjusted Series				
Jul	130.48	148.88	174.27	190.04
Aug	133.28	154.71	174.98	189.85
Sep	133.16	161.27	177.11	190.50
Oct	133.41	160.64	179.34	189.80
Nov	137.00	164.42	180.87	190.43
Dec	136.98	165.13	180.89	194.82
Jan	139.12	167.07	182.38	196.98
Feb	141.46	166.56	184.12	197.77
Mar	143.40	169.20	185.81	197.59
Apr	145.82	169.93	188.09	198.37
May	146.86	170.20	189.50	
Jun	148.42	171.98	189.77	

Table 16: CPI Monthly & Average Seasonal Factors					
Period	FY10	FY11	FY12	FY13	Average
Jul	100.19	100.15	100.15	100.17	100.17
Aug	100.59	100.62	100.65	100.67	100.63
Sep	100.62	100.71	100.72	100.71	100.69
Oct	100.81	100.90	100.94	100.92	100.89
Nov	100.46	100.47	100.46	100.47	100.46
Dec	99.43	99.40	99.37	99.35	99.39
Jan	99.85	99.88	99.91	99.94	99.90
Feb	99.26	99.19	99.15	99.14	99.19
Mar	99.43	99.38	99.37	99.36	99.39
Apr	99.99	99.99	100.03	100.05	100.02
May	99.71	99.68	99.65		99.68
Jun	99.59	99.58	99.57		99.58

Table 17: CPI Food Monthly & Average Seasonal Factors					
Period	FY10	FY11	FY12	FY13	Average
Jul	100.38	100.31	100.30	100.36	100.34
Aug	101.25	101.29	101.34	101.38	101.31
Sep	101.53	101.67	101.73	101.73	101.67
Oct	101.93	102.04	102.08	102.04	102.02
Nov	101.37	101.32	101.32	101.37	101.34
Dec	99.15	99.13	99.07	99.05	99.10
Jan	99.59	99.67	99.74	99.80	99.70
Feb	98.30	98.20	98.14	98.12	98.19
Mar	98.82	98.76	98.74	98.72	98.76
Apr	99.61	99.60	99.65	99.68	99.63
May	99.20	99.16	99.08		99.15
Jun	98.79	98.78	98.72		98.77

Table 18: CPI Month-on-Month Change Original & Seasonally Adjusted				
Original Series				
Period	FY10	FY11	FY12	FY13
Jul		2.07	1.27	-0.25
Aug	1.81	2.19	1.40	0.90
Sep	0.17	2.03	1.03	0.79
Oct	0.60	0.98	1.44	0.38
Nov	1.32	0.99	0.29	-0.39
Dec	-0.73	-0.30	-0.70	0.23
Jan	2.59	1.21	1.54	1.67
Feb	0.38	-0.56	0.30	-0.34
Mar	1.24	1.40	1.17	0.41
Apr	1.83	1.40	1.83	1.09
May	0.13	0.23	1.15	
Jun	0.36	0.96	0.04	
Seasonally Adjusted Series				
Jul		1.50	0.70	-0.84
Aug	1.41	1.71	0.89	0.39
Sep	0.13	1.94	0.96	0.75
Oct	0.42	0.80	1.23	0.17
Nov	1.68	1.43	0.76	0.06
Dec	0.29	0.77	0.39	1.36
Jan	2.16	0.73	0.98	1.06
Feb	0.97	0.14	1.07	0.47
Mar	1.07	1.20	0.95	0.19
Apr	1.26	0.78	1.15	0.39
May	0.42	0.54	1.54	
Jun	0.48	1.06	0.11	

Table 19: CPI Food Month-on-Month Change Original & Seasonally Adjusted Series				
Original Series				
Period	FY10	FY11	FY12	FY13
Jul		1.84	2.90	1.80
Aug	3.04	4.93	1.44	0.92
Sep	0.19	4.64	1.60	0.69
Oct	0.58	-0.04	1.62	-0.07
Nov	2.12	1.64	0.10	-0.33
Dec	-2.20	-1.74	-2.21	-0.03
Jan	2.01	1.73	1.50	1.87
Feb	0.38	-1.77	-0.66	-1.29
Mar	1.91	2.16	1.53	0.52
Apr	2.49	1.28	2.16	1.37
May	0.31	-0.28	0.17	
Jun	0.65	0.66	-0.21	
Seasonally Adjusted Series				
Jul		0.31	1.34	0.14
Aug	2.15	3.92	0.41	-0.10
Sep	-0.09	4.24	1.21	0.34
Oct	0.18	-0.39	1.26	-0.37
Nov	2.69	2.35	0.86	0.33
Dec	-0.01	0.44	0.01	2.31
Jan	1.56	1.17	0.82	1.10
Feb	1.69	-0.31	0.96	0.40
Mar	1.37	1.58	0.92	-0.09
Apr	1.68	0.43	1.23	0.40
May	0.72	0.16	0.75	
Jun	1.06	1.04	0.14	

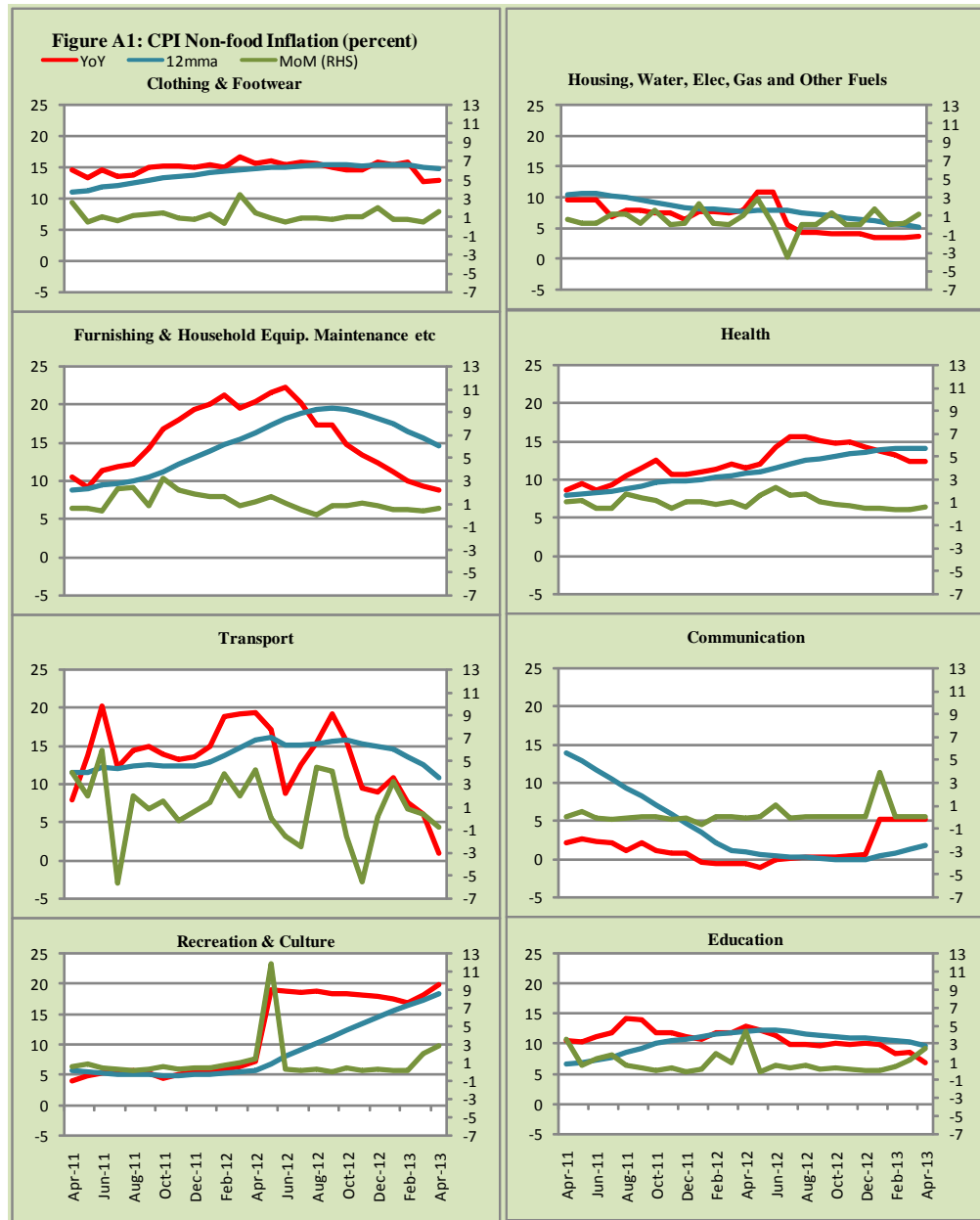


Figure A2: Frequency Distribution of Price Changes of CPI Items, April 2013

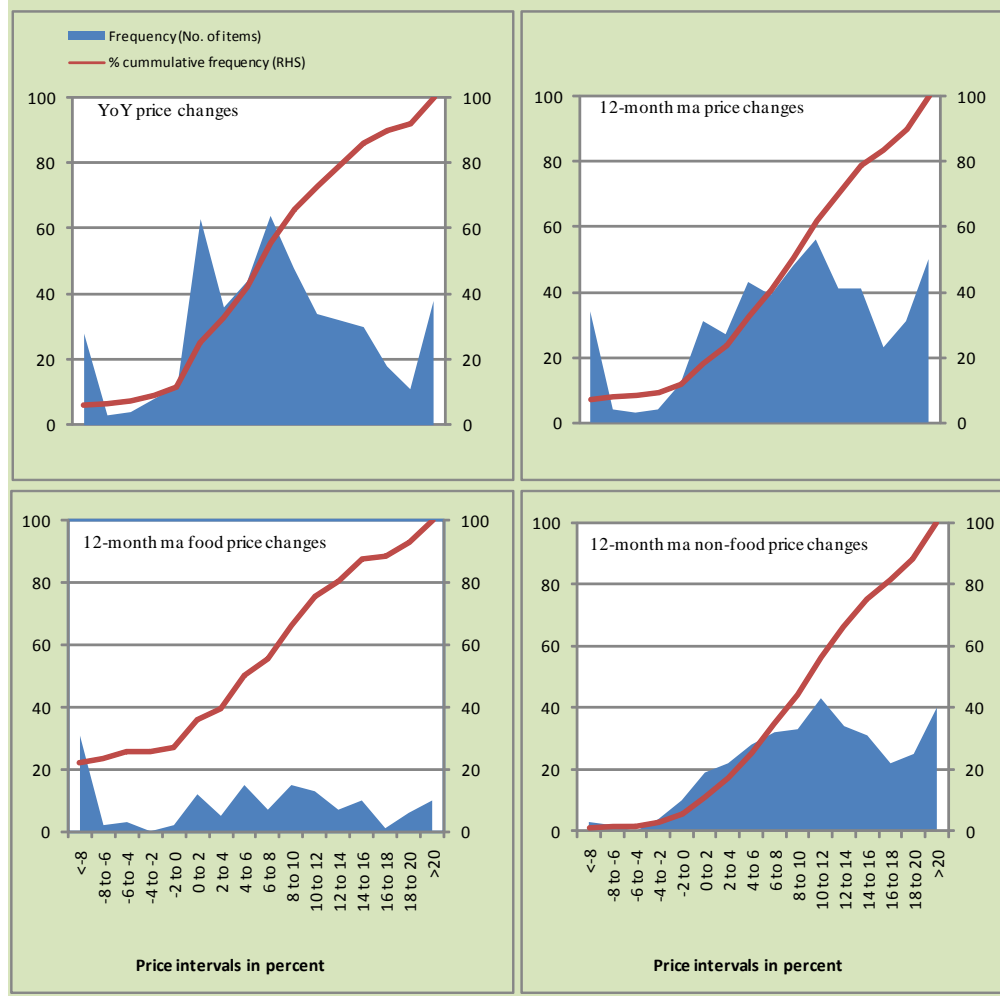


Figure A3: Frequency Distribution of Price Changes of WPI Commodities, April 2013

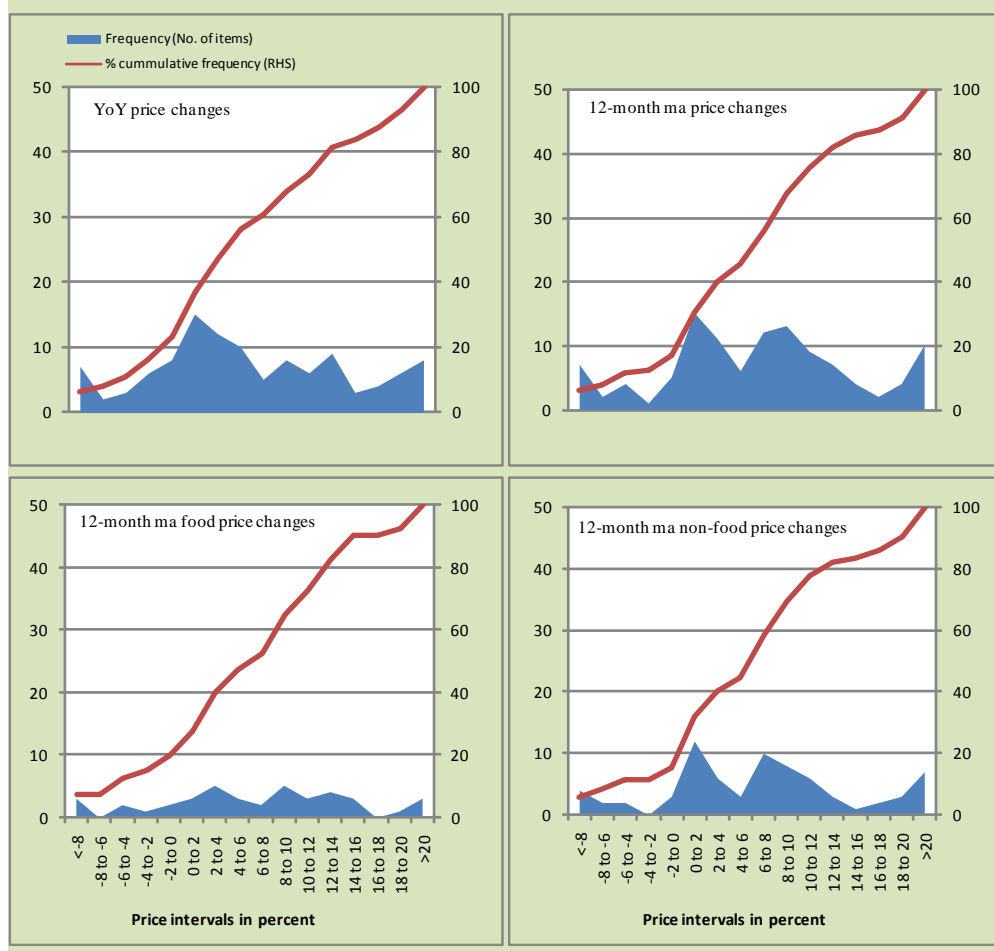
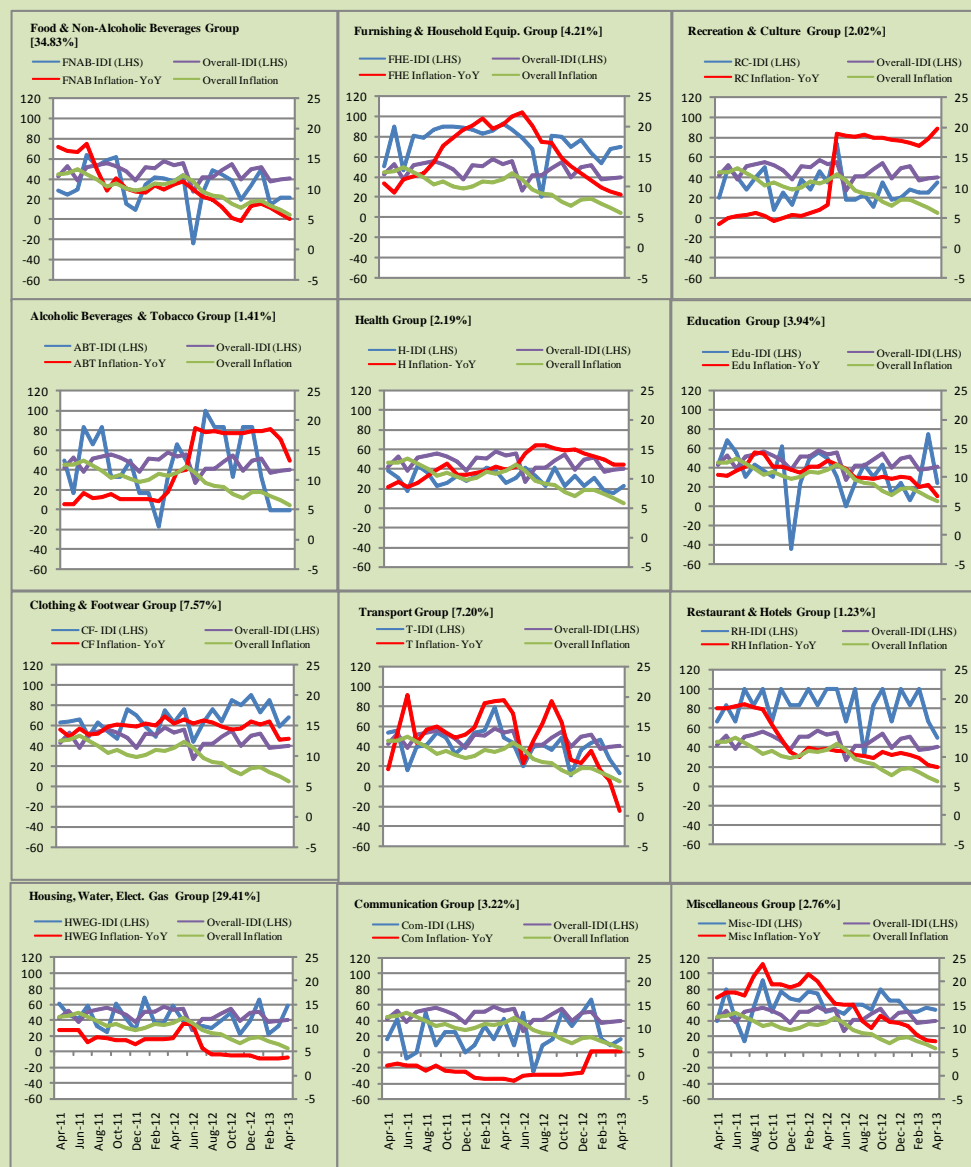


Figure A4: Group- wise/ Overall Inflation Diffusion Index (IDI) and Respective/ Overall YoY Inflation (percent)



Numbers in square brackets show the weights of respective groups in the CPI baskets.

Annexure B

Technical Notes

1. All the three measures of inflation, viz. CPI, WPI and SPI are computed by the following Laspeyres Index formula:

$$I_t = \sum_j w_0^j \left(\frac{P_t^j}{P_0^j} \right)$$

Where I_t is price index, w_0^j is weight of commodity j in the overall basket, P_t^j is price of commodity j in period t and P_0^j is its price in the base year.

2. Base year for all the indices is the year 2007-08.
3. CPI basket contains 487 consumers' goods; WPI basket contains 463 items; SPI contains 53 items.
4. YoY inflation is the percent change of an index in a given month over the index in the same month of the last year. It is computed as follows:

$$\pi_t = \left(\frac{I_t}{I_{t-12}} - 1 \right) \times 100$$

5. Period average inflation is the percent change of the average index during the period from July to the given month of a fiscal year over the average index during the corresponding period of the last year. It is computed as follows:

$$\bar{\pi}_t = \left(\frac{\sum_{i=0}^{t-v} I_{t-i}}{\sum_{i=0}^{t-12-v} I_{t-12-i}} - 1 \right) \times 100$$

Where v is the serial number of the month of July of current fiscal year in a given time series.

6. Monthly inflation is the percent change of an index in a given month over the index in the preceding month. It is computed as follows:

$$\pi_t = \left(\frac{I_t}{I_{t-1}} - 1 \right) \times 100$$

7. 12-month moving average inflation (Long-run trend inflation) is the percent change of 12-month moving average of a price index; it is computed as follows:

$$\tilde{\pi}_t = \left(\frac{\sum_{i=0}^{11} I_{t-i}}{\sum_{i=0}^{11} I_{t-12-i}} - 1 \right) \times 100$$

8. Core Inflation is defined as the persistent component of measured inflation that excludes volatile and controlled prices. It reflects the normal supply and demand conditions in the economy. Core inflation is computed by the following two methods:
- a) Non-food, Non-energy inflation (NFNE inflation); it is computed by excluding food group and energy items (kerosene oil, petrol, diesel, CNG, electricity and natural gas) from the CPI basket.
 - b) 20% trimmed-mean inflation; it is computed through the following steps:
 - i. All CPI items are arranged in ascending order according to YoY/12-month moving average/monthly/period average changes in their price indices in a given month.
 - ii. 20 percent of the items showing extreme changes are excluded with 10 percent of the items at the top of the list (corresponding to cumulative weight of 90% or more) and 10 percent of the items at the bottom of the list (corresponding to cumulative weight of 10 percent or less).
 - iii. The weighted mean of the changes in price indices of the rest of the items is core inflation.
9. Weighted contribution of different items (or sub-groups) to total inflation is worked out as below:

Let the overall index (I_t) is the weighted average of price indexes of individual items or sub-groups (I_{it}), i.e.

$$I_t = \sum_i w_i \cdot I_{it}$$

The weighted contribution of a single item (or a sub-group) to overall inflation is defined as below:

$$C_{it} = \alpha_{it-12} \cdot w_i \cdot \left(\frac{\pi_{it}}{\pi_t} \right)$$

Where C_{it} : Contribution of i^{th} item to the overall inflation

$$\alpha_{it-12} = \frac{I_{it-12}}{I_{t-12}} ; \text{ i.e. ratio of item's index to overall index in the}$$

reference month

w_i : Weights of i^{th} item

π_{it} : Inflation of i^{th} item

π_t : Overall inflation

10. Annualized rate of inflation (based on a month-on-month rate π) is computed as follows

$$\text{Annualized } \pi = \left(\left(1 + \frac{\pi}{100} \right)^{12} - 1 \right) \times 100$$

Methodology for Estimating Inflation Diffusion Index for Pakistan

We constructed an index to measure the spread of inflation in the 487 commodities of the CPI basket. It is based on month-on-month (MoM) change in the prices of these commodities and can be obtained by estimating what is known as an ‘inflation diffusion index’ (IDI) as below:

$$\frac{\text{Number of Commodities with } \uparrow \text{ in MoM change} - \text{Number of Commodities with } \downarrow \text{ in MoM change}}{\text{Number of Commodities for which prices are reported}}$$

Thus, it is the difference between the share of items with increasing prices (i.e. depicting inflation) and the share of items with falling prices (i.e. depicting deflation) in CPI amongst the commodities for which prices have altered or remained constant¹.

Based upon commodity level price data from July 2001 to February 2011 we computed inflation diffusion indices overall (general) CPI basket and for all groups in CPI basket (except House Rent Index being single item). A simple analysis² suggests that IDI is a leading indicator for Pakistan’s YoY inflation.

¹ We do not observe the prices of certain commodities (like the seasonal items) during certain periods of time. To calculate the inflation diffusion index we consider the commodities for which prices have been reported (irrespective of changed or not) during the month under review.

² Formal test shows one way ‘Granger’ causality from IDI to YoY inflation.