

Domestic Commodity Prices (in Rupees)						Percentage change over		
Items	Unit	16-Feb-17	18-Jan-18	8-Feb-18	15-Feb-18	Previous week	Previous month	Previous year
Weekly SPI Index (Combined)		219.97	223.45	222.31	222.24	0.0	-0.5	1.0
Wheat	10 Kg	349.78	342.66	341.25	342.13	0.3	-0.2	-2.2
Wheat Flour Bag Avg. Qlt.	10 Kg	386.92	387.74	385.82	385.08	-0.2	-0.7	-0.5
Rice Basmati Broken	Kg	64.09	72.96	73.54	73.54	0.0	0.8	14.7
Rice Irri-6/9	Kg	49.43	52.11	52.40	52.40	0.0	0.6	6.0
Mash Pulse Washed	Kg	196.01	158.12	154.73	153.89	-0.5	-2.7	-21.5
Gram Pulse Washed	Kg	136.26	119.00	117.11	116.23	-0.8	-2.3	-14.7
Beef	Kg	329.12	347.49	348.25	348.25	0.0	0.2	5.8
Mutton	Kg	663.91	734.27	739.08	740.07	0.1	0.8	11.5
Chicken Live (Farm)	Kg	143.32	168.72	168.54	165.50	-1.8	-1.9	15.5
Egg Hen (Farm)	Doz	108.32	108.81	97.73	103.55	6.0	-4.8	-4.4
Sugar	Kg	62.77	53.03	51.87	51.39	-0.9	-3.1	-18.1
Gur	Kg	85.59	80.91	79.48	77.99	-1.9	-3.6	-8.9
Milk Fresh	Ltr	80.67	82.50	82.50	82.50	0.0	0.0	2.3
Veg. Ghee (Tin)	2.5 Kg	456.47	462.53	461.94	462.14	0.0	-0.1	1.2
Cooking Oil (Tin)	2.5 Ltr	464.06	469.51	469.00	469.00	0.0	-0.1	1.1
Tea Packet (Yellow Label)	200 Gm	179.26	178.96	178.96	187.32	4.7	4.7	4.5
Kerosene	Ltr	77.97	103.24	109.13	109.13	0.0	5.7	40.0
Gas Charges Up To 3.3719	Mmbtu	128.70	128.70	128.70	128.70	0.0	0.0	0.0
L.P.G.(11 Kg Cylinder)	Each	1182.65	1389.12	1316.47	1307.06	-0.7	-5.9	10.5
Elec.Chrg. 1-50	Unit	2.00	2.00	2.00	2.00	0.0	0.0	0.0
Petrol	Ltr	72.13	82.43	85.45	85.45	0.0	3.7	18.5
Diesel	Ltr	81.38	90.77	96.81	96.81	0.0	6.7	19.0
Urea Sona	50 Kg bag	1363.00	1411.00	1424.00	1423.00	-0.1	0.9	4.4
DAP	50 Kg bag	2520.00	2888.00	2943.00	2932.00	-0.4	1.5	16.3
Cement	50 Kg bag	551.00	530.00	523.00	522.00	-0.2	-1.5	-5.3
Furnace Oil*	Metric ton	49624.80	67052.40	67051.86	67051.86	0.0	0.0	35.1
Cotton [@]	Maund (37.32 Kg)	6835.00	7645.00	7145.00	7145.00	0.0	-6.5	4.5
Gold 24 ct [@]	10 Gm	43371.00	48857.00	48171.00	47914.00	-0.5	-1.9	10.5

Source:

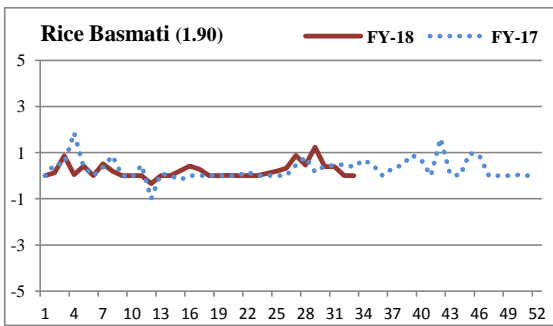
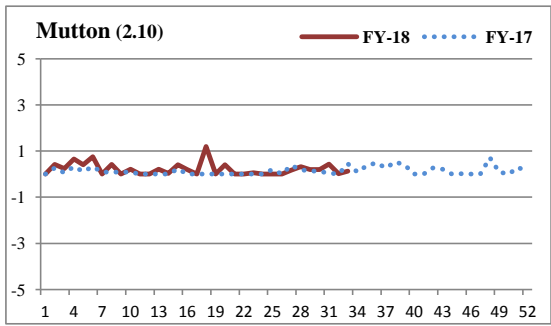
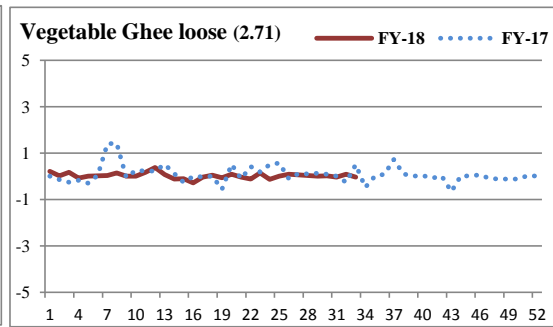
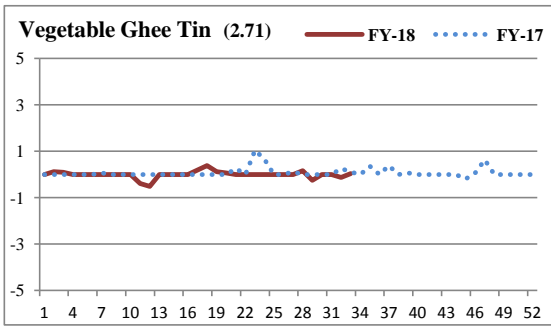
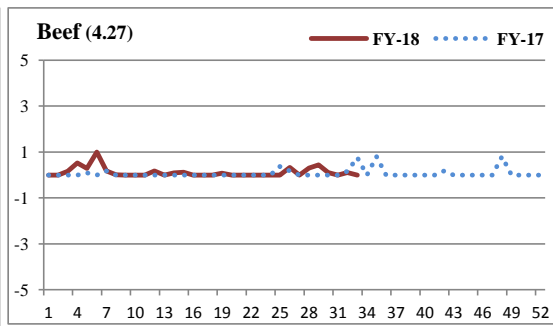
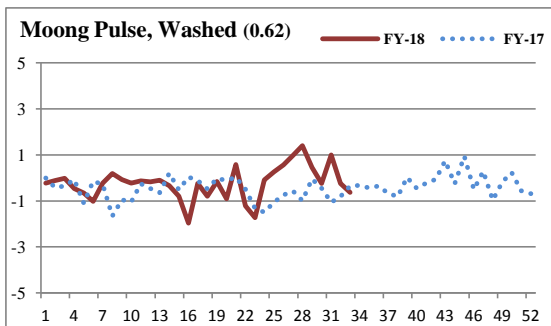
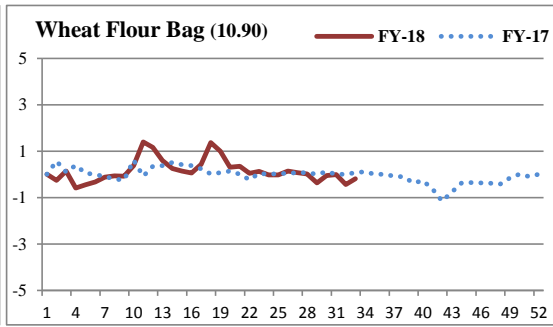
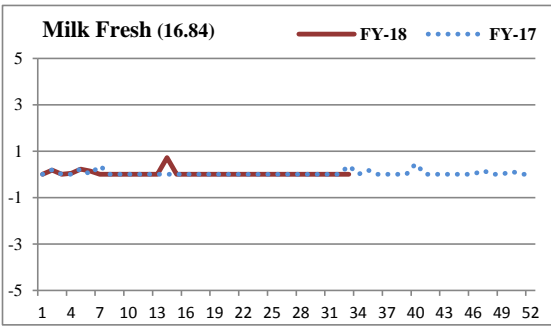
Pakistan Bureau of Statistics

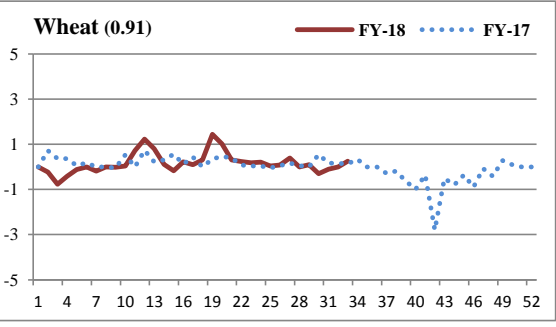
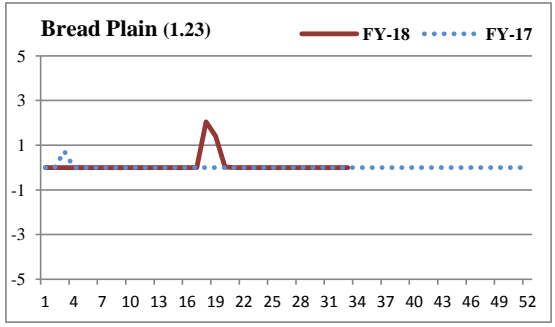
*Pakistan State Oil (www.psopk.com)

[@]Business Recorder (www.brecorder.com)

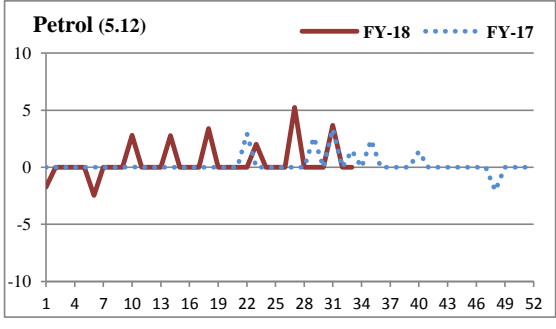
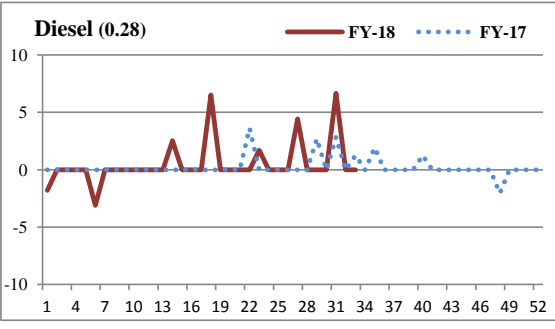
Trend of Top 25 SPI Items (Weight Wise)														
Sr. No.	Item	Unit	Weight	Prices Weekly			YoY% Change			YoY% Change Direction	WoW% Change			WoW% Change Direction
				16-Feb-17	8-Feb-18	15-Feb-18	16-Feb-17	8-Feb-18	15-Feb-18		16-Feb-17	8-Feb-18	15-Feb-18	
1	Milk Fresh	Ltr	16.84	80.67	82.50	82.50	2.99	2.65	2.27	↓	0.37	0.00	0.00	↓
2	Elec.Chrg. 1-50	Unit	11.51	2.00	2.00	2.00	0.00	0.00	0.00	→	0.00	0.00	0.00	→
3	Wheat Flour Bag Av. Qlt.	10 Kg	10.90	386.92	385.82	385.08	-2.70	-0.21	-0.48	↑	0.08	-0.44	-0.19	↑
4	Petrol	Ltr	5.12	72.13	85.45	85.45	0.08	20.18	18.47	↑	1.45	0.00	0.00	→
5	Beef	Kg	4.27	329.12	348.25	348.25	3.49	6.62	5.81	↑	0.76	0.11	0.00	↓
6	Gas Charges Up To 3.3719	Mmbtu	4.12	128.70	128.70	128.70	0.22	0.00	0.00	↓	0.00	0.00	0.00	→
7	Chicken Live (Farm)	Kg	3.56	143.32	168.54	165.50	17.72	29.82	15.48	↓	10.39	3.86	-1.80	↓
8	Sugar	Kg	2.73	62.77	51.87	51.39	-0.35	-18.42	-18.13	↓	-1.27	-0.27	-0.93	↓
9	Veg. Ghee (Tin)	2.5 Kg	2.71	456.47	461.94	462.14	2.41	1.30	1.24	↓	0.10	-0.13	0.04	↑
10	Veg.Ghee Loose	Kg	2.71	145.64	145.73	145.67	6.82	0.57	0.02	↓	0.50	0.08	-0.04	↓
11	Cooking Oil (Tin)	2.5 Ltr	2.30	464.06	469.00	469.00	1.81	1.06	1.06	↓	0.00	-0.13	0.00	↑
12	Tea Packet (Yellow Lable)	200 Gm	2.15	179.26	178.96	187.32	-2.52	0.70	4.50	↑	0.87	0.00	4.67	↑
13	Mutton	Kg	2.10	663.91	739.08	740.07	4.65	11.83	11.47	↑	0.45	0.01	0.13	↑
14	Rice Basmati Broken	Kg	1.90	64.09	73.54	73.54	6.43	15.18	14.74	↑	0.38	0.00	0.00	↓
15	Long Cloth (Coarse Latha)	Mtr	1.85	205.57	214.02	214.02	1.38	4.11	4.11	↑	0.00	0.00	0.00	→
16	Cigarettes K-2	20'S	1.59	67.06	50.76	50.76	12.10	-24.31	-24.31	↓	0.00	0.00	0.00	↓
17	Lawn	Mtr	1.47	251.21	255.77	255.77	3.37	1.82	1.82	↓	0.00	0.00	0.00	→
18	Onions	Kg	1.42	31.04	44.13	41.45	-24.50	45.45	33.54	↑	2.31	-6.35	-6.07	↑
19	Bananas	Doz	1.39	74.65	77.72	79.34	8.39	6.29	6.28	↓	2.09	6.10	2.08	↓
20	Curd	Kg	1.35	94.76	98.82	98.82	2.53	5.02	4.28	↑	0.70	-0.01	-0.01	↓
21	Tele. Local Call	Each	1.31	3.94	3.94	3.94	0.00	0.00	0.00	→	0.00	0.00	0.00	→
22	Potatoes	Kg	1.25	24.96	27.87	26.22	30.61	17.00	5.05	↓	4.79	-0.78	-5.92	↓
23	Bread Plain Mid.Size (340-400 Gm)	Each	1.23	41.12	42.56	42.56	0.73	3.50	3.50	↑	0.00	0.00	0.00	→
24	Egg Hen (Farm)	Doz	1.19	108.32	97.73	103.55	11.60	-16.10	-4.40	↓	-7.01	-5.97	5.96	↑
25	Tomatoes	Kg	1.18	44.73	37.30	38.89	23.12	2.64	-13.06	↓	23.09	4.10	4.26	↑

Weekly Trend in Major SPI Items (-5 to +5)%

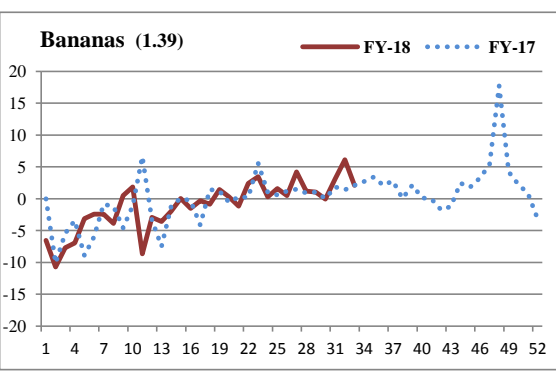
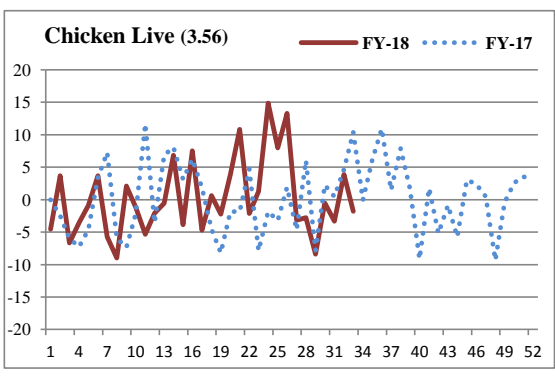


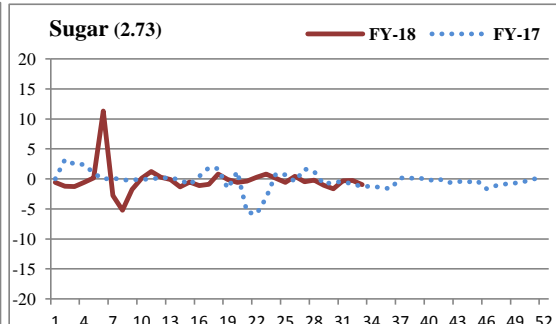
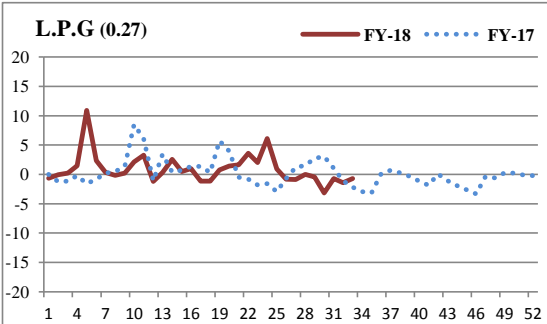
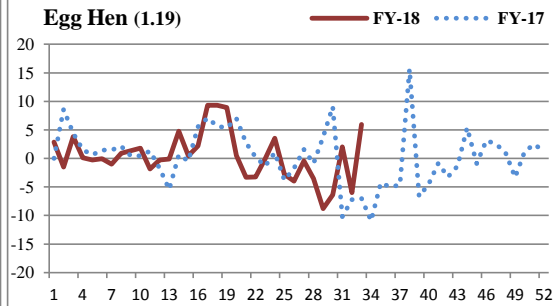
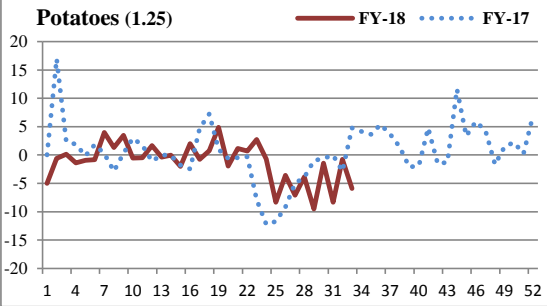


Weekly Trend in Major SPI Items (-10 to +10)%

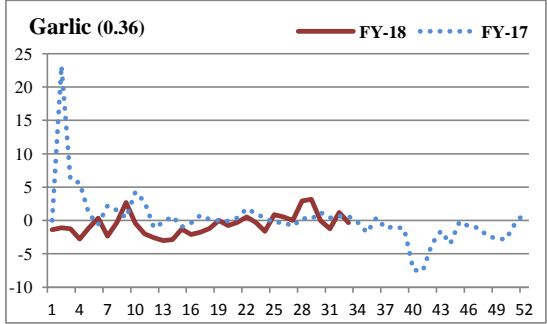
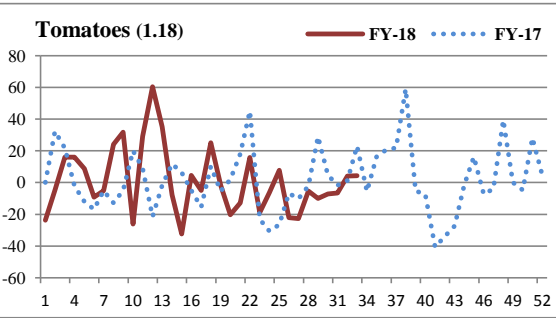
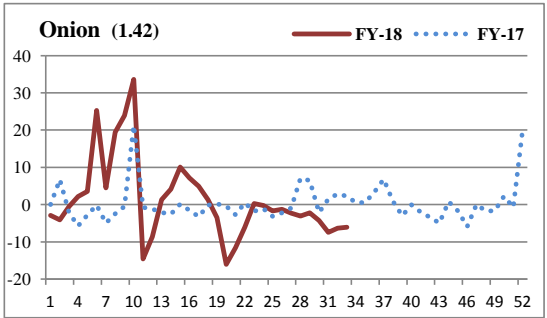


Weekly Trend in Major SPI Items (-20 to +20)%





Weekly Trend in Major SPI Items (Beyond $\pm 20\%$)



Global Commodity Indices and Prices						Percentage change over		
Items	Unit	17-Feb-17	19-Jan-18	9-Feb-18	16-Feb-18	Previous week	Previous month	Previous year
S&P GSCI Commodity Index*		403.0	450.4	428.5	443.6	3.5	-1.5	10.1
Bloomberg Commodity Index (BCOM)**		88.1	88.5	85.6	88.2	3.0	-0.4	0.1
Energy (S&P Index)		183.6	216.6	200.3	207.7	3.7	-4.1	13.1
Crude Oil (S&P Index)		294.7	347.0	323.8	337.3	4.2	-2.8	14.4
NYMEX WTI (Mar 18)	US\$/barrel	53.8	63.3	59.2	61.7	4.2	-2.6	14.7
ICE Brent (Apr 18)	US\$/barrel	56.1	68.6	62.8	64.8	3.3	-5.5	15.6
Dubai Spot (Index)	US\$/barrel	53.8	65.8	61.3	61.9	1.0	-5.9	15.1
Arab Light Spot Asia (Index)	US\$/barrel	54.1	67.5	63.2	62.8	-0.6	-6.8	16.1
Coal (DJ US Total Market Index)		41.9	61.2	51.3	56.8	10.8	-7.2	35.8
Coal (US)	US\$/MT	44.0	45.2	45.0	45.1	0.0	-0.2	2.4
Natural Gas (S&P Index)		138.2	137.7	121.4	121.6	0.2	-11.7	-12.0
Natural Gas (Mar 18)	US\$/MMBTU	3.0	2.9	2.6	2.6	-1.0	-13.0	-13.3
Industrial metals (S&P Index)		329.3	389.1	376.4	397.6	5.6	2.2	20.7
Aluminum (LME, 3m future)	US\$/MT	1880.0	2220.0	2123.0	2208.0	4.0	-0.5	17.4
Copper (LME, 3m future)	US\$/MT	5960.0	7041.0	6755.0	7233.0	7.1	2.7	21.4
Lead (LME, 3m future)	US\$/MT	2252.0	2581.0	2534.0	2613.0	3.1	1.2	16.0
Nickel (LME, 3m future)	US\$/MT	11050.0	12720.0	12970.0	1392.0	-89.3	-89.1	-87.4
Tin (LME, 3m future)	US\$/MT	19725.0	20600.0	21025.0	2175.0	-89.7	-89.4	-89.0
Zinc (LME, 3m future)	US\$/MT	2809.0	3416.5	3385.0	3575.0	5.6	4.6	27.3
HR Coil Steel US (Feb 18)	US\$/MT	610.0	715.0	742.0	751.0	1.2	5.0	23.1
Precious metals (S&P Index)		1644.9	1749.2	1714.2	1768.1	3.1	1.1	7.5
Gold (Spot)	US\$/Troy Ounce	1235.0	1331.9	1316.2	1347.1	2.4	1.1	9.1
Platinum (Spot)	US\$/Troy Ounce	1003.0	1012.5	965.5	1005.0	4.1	-0.7	0.2
Silver (Spot)	US\$/Troy Ounce	18.0	17.1	16.4	16.7	1.8	-2.7	-7.5
Agriculture (S&P Index)		310.6	279.9	288.6	294.7	2.1	5.3	-5.1
Cotton (NYB-ICE, Mar 18)	US cents/pounds	75.5	83.4	76.7	75.7	-1.3	-9.2	0.3
Sugar (LIF, Mar 18)	US\$/MT	446.7	357.0	358.5	356.8	-0.5	-0.1	-20.1
Corn (CBOT, Jan 18)	US\$/MT	145.0	138.8	142.5	144.7	1.5	4.3	-0.2
Rice (CBOT, Mar 18)	US\$/MT	205.8	269.1	271.8	264.9	-2.5	-1.6	28.7
Wheat (CBOT, Jan 18)	US\$/MT	162.0	155.3	165.0	168.2	1.9	8.3	3.8
Soybeans (CBOT, Mar 18)	US\$/MT	379.3	359.0	361.2	375.3	3.9	4.5	-1.1
Palm oil (Bursa Malaysia, Dec 17)	US\$/MT	662.5	595.6	592.8	602.5	1.6	1.1	-9.1
Others								
Urea Granular (US Gulf)	US\$/MT	242.0	240.0	254.0	255.0	0.4	6.3	5.4
DAP (US Gulf)	US\$/MT	367.0	395.0	407.0	407.0	0.0	3.0	10.9

Source: Bloomberg

LME: London Metal Exchange, CBOT: Chicago Board of Trade, NYMEX : New York Mercantile Exchange, DJ:Dow Jones

* The S&P GSCI(standard&poor's Goldman sachs commodity Index) is widely recognized as a leading measure of general price movements and inflation in the world economy.

It provides investors with a reliable and publicly available benchmark for investment performance in the commodity markets.

**Bloomberg Commodity Index(BCOM) reflects commodity futures price movements

