

Domestic Commodity Prices (in Rupees)						Percentage change over		
Items	Unit	10-Aug-17	12-Jul-18	2-Aug-18	9-Aug-18	Previous week	Previous month	Previous year
<b>Weekly SPI Index (Combined)</b>		<b>219.92</b>	<b>228.78</b>	<b>229.55</b>	<b>229.55</b>	<b>0.0</b>	<b>0.3</b>	<b>4.4</b>
Wheat	10 Kg	319.03	331.84	331.84	332.50	0.2	0.2	4.2
Wheat Flour Bag Avg. Qlt.	10 Kg	361.05	385.02	385.14	386.02	0.2	0.3	6.9
Rice Basmati Broken	Kg	69.77	75.46	75.57	75.57	0.0	0.1	8.3
Rice Irri-6/9	Kg	49.90	53.62	53.62	53.78	0.3	0.3	7.8
Mash Pulse Washed	Kg	187.07	148.64	148.05	146.94	-0.7	-1.1	-21.5
Gram Pulse Washed	Kg	122.85	114.67	115.46	116.14	0.6	1.3	-5.5
Beef	Kg	341.61	372.29	373.53	373.53	0.0	0.3	9.3
Mutton	Kg	706.77	781.02	781.32	781.32	0.0	0.0	10.5
Chicken Live (Farm)	Kg	147.53	160.90	137.59	125.48	-8.8	-22.0	-14.9
Egg Hen (Farm)	Doz	96.98	100.67	96.27	96.86	0.6	-3.8	-0.1
Sugar	Kg	60.54	55.18	55.71	55.77	0.1	1.1	-7.9
Gur	Kg	85.20	80.87	81.60	82.08	0.6	1.5	-3.7
Milk Fresh	Ltr	81.91	85.20	85.46	85.46	0.0	0.3	4.3
Veg. Ghee (Tin)	2.5 Kg	463.53	471.41	473.65	473.65	0.0	0.5	2.2
Cooking Oil (Tin)	2.5 Ltr	470.29	476.88	479.47	479.47	0.0	0.5	2.0
Tea Packet (Yellow Label)	200 Gm	197.51	201.22	203.39	203.39	0.0	1.1	3.0
Kerosene	Ltr	78.88	122.37	122.37	122.37	0.0	0.0	55.1
Gas Charges Up To 3.3719	Mmbtu	128.70	128.70	128.70	128.70	0.0	0.0	0.0
L.P.G.( 11 Kg Cylinder)	Each	1130.59	1274.12	1368.82	1447.35	5.7	13.6	28.0
Elec.Chrg. 1-50	Unit	2.00	2.00	2.00	2.00	0.0	0.0	0.0
Petrol	Ltr	70.27	96.22	96.22	96.22	0.0	0.0	36.9
Diesel	Ltr	78.27	113.92	113.92	113.92	0.0	0.0	45.5
Urea Sona	50 Kg bag	1321.00	1601.00	1660.00	1660.00	0.0	3.7	25.7
DAP	50 Kg bag	2612.00	3247.00	3368.00	3392.00	0.7	4.5	29.9
Cement	50 Kg bag	552.00	574.00	583.00	581.00	-0.3	1.2	5.3
Furnace Oil*	Metric ton	45782.40	76108.50	79963.65	79963.65	0.0	5.1	74.7
Cotton <sup>@</sup>	Maund (37.32 Kg)	6595.00	8545.00	9160.00	9160.00	0.0	7.2	38.9
Gold 24 ct <sup>@</sup>	10 Gm	43628.00	50583.00	47668.00	47239.00	-0.9	-6.6	8.3

Source:

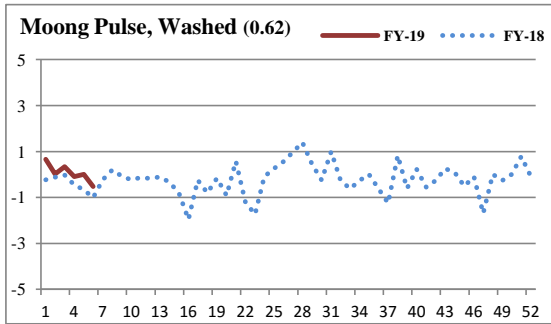
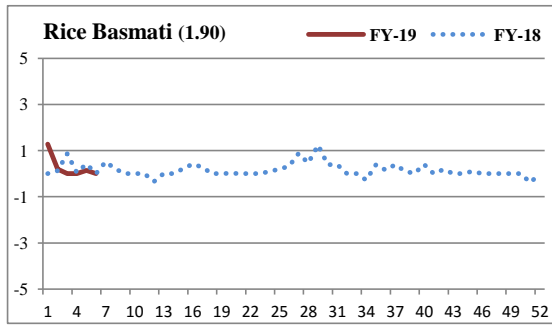
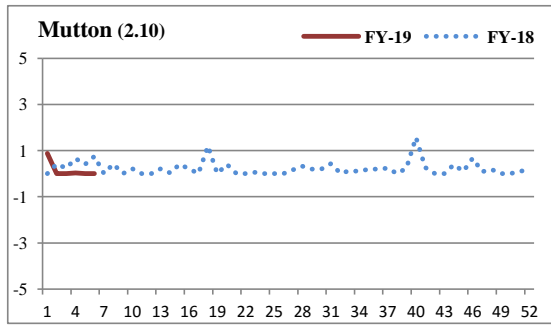
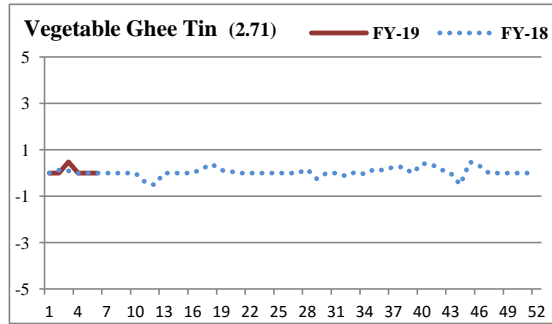
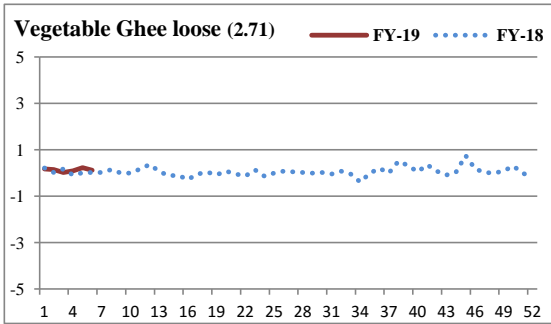
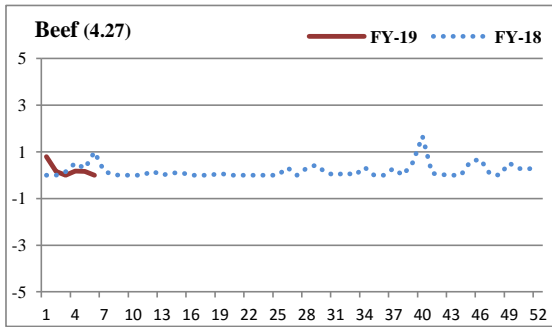
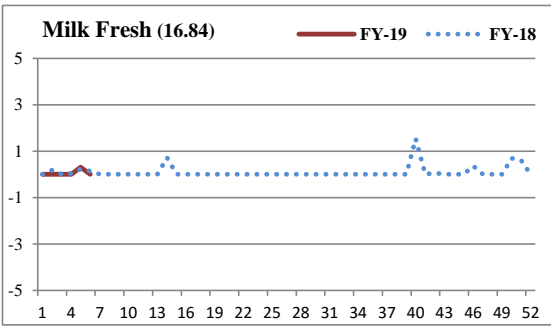
Pakistan Bureau of Statistics

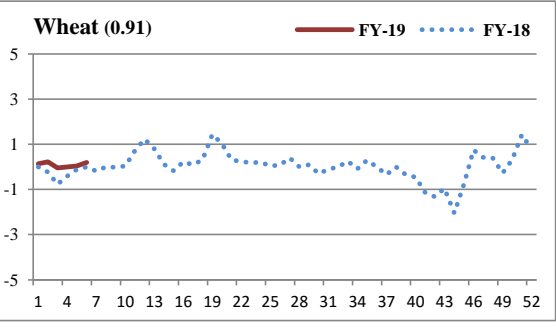
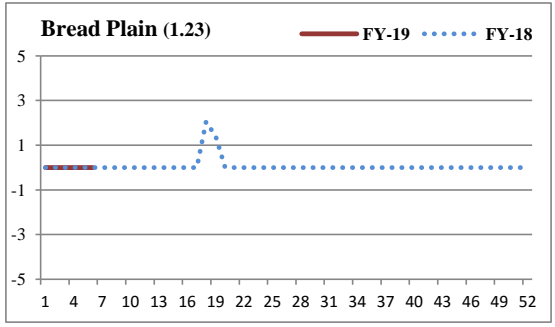
\*Pakistan State Oil ([www.psopk.com](http://www.psopk.com))

<sup>@</sup>Business Recorder ([www.brecorder.com](http://www.brecorder.com))

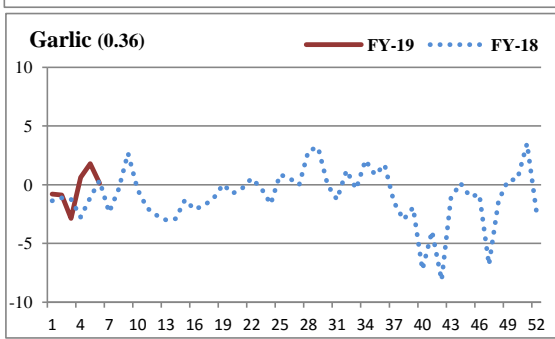
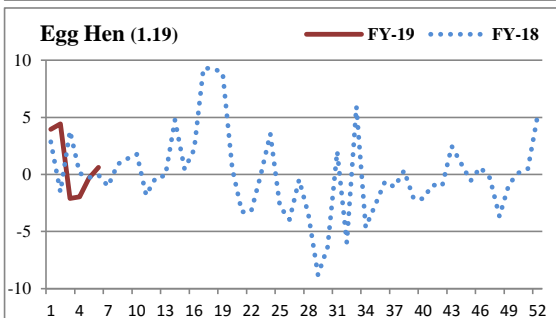
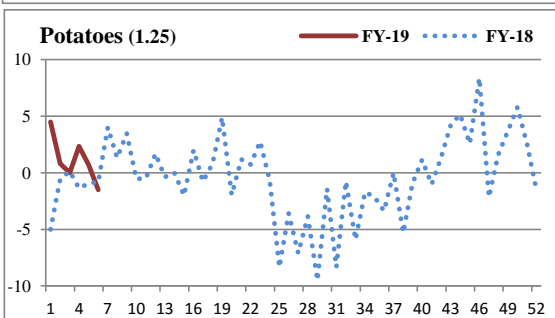
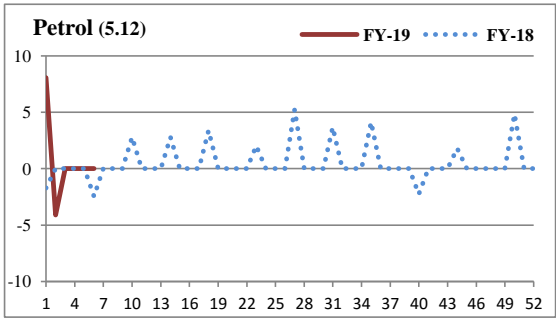
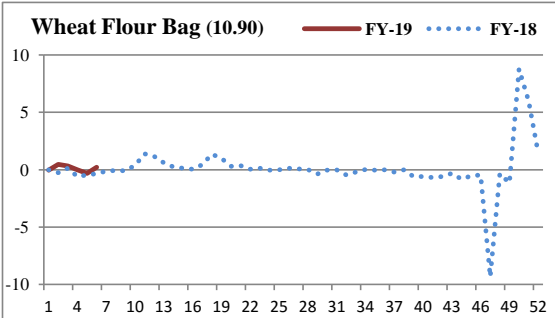
Trend of Top 25 SPI Items (Weight Wise)														
Sr. No.	Item	Unit	Weight	Prices Weekly			YoY% Change			YoY% Change Direction	WoW% Change			WoW% Change Direction
				10-Aug-17	2-Aug-18	9-Aug-18	10-Aug-17	2-Aug-18	9-Aug-18		10-Aug-17	2-Aug-18	9-Aug-18	
1	Milk Fresh	Ltr	16.84	81.91	85.46	85.46	2.30	4.47	4.33	↑	0.13	0.31	0.00	↓
2	Elec.Chrg. 1-50	Unit	11.51	2.00	2.00	2.00	0.00	0.00	0.00	→	0.00	0.00	0.00	→
3	Wheat Flour Bag Av. Qlt.	10 Kg	10.90	361.05	385.14	386.02	-4.12	6.32	6.92	↑	-0.33	-0.31	0.23	↑
4	Petrol	Ltr	5.12	70.27	96.22	96.22	7.91	33.56	36.93	↑	-2.46	0.00	0.00	→
5	Beef	Kg	4.27	341.61	373.53	373.53	5.53	10.43	9.34	↑	1.00	0.16	0.00	↓
6	Gas Charges Up To 3.3719	Mmbtu	4.12	128.70	128.70	128.70	0.22	0.00	0.00	↓	0.00	0.00	0.00	→
7	Chicken Live (Farm)	Kg	3.56	147.53	137.59	125.48	14.13	-3.28	-14.95	↓	3.70	-2.47	-8.80	↓
8	Sugar	Kg	2.73	60.54	55.71	55.77	-14.90	2.45	-7.88	↑	11.33	0.60	0.11	↓
9	Veg. Ghee (Tin)	2.5 Kg	2.71	463.53	473.65	473.65	4.14	2.18	2.18	↓	0.00	0.00	0.00	↓
10	Veg.Ghee Loose	Kg	2.71	145.20	149.96	150.14	5.71	3.30	3.40	↓	0.02	0.23	0.12	↓
11	Cooking Oil (Tin)	2.5 Ltr	2.30	470.29	479.47	479.47	3.51	1.95	1.95	↓	0.00	0.00	0.00	→
12	Tea Packet (Yellow Lable)	200 Gm	2.15	197.51	203.39	203.39	25.09	2.18	2.98	↓	-0.77	0.00	0.00	→
13	Mutton	Kg	2.10	706.77	781.32	781.32	8.72	11.38	10.55	↑	0.75	0.00	0.00	↓
14	Rice Basmati Broken	Kg	1.90	69.77	75.57	75.57	13.10	8.31	8.31	↓	0.00	0.15	0.00	↓
15	Long Cloth (Coarse Latha)	Mtr	1.85	212.30	231.81	231.81	3.27	9.19	9.19	↑	0.00	0.00	0.00	→
16	Cigarettes K-2	20'S	1.59	50.76	51.18	51.18	-20.91	0.83	0.83	↑	0.00	0.00	0.00	↓
17	Lawn	Mtr	1.47	255.77	287.59	287.59	1.82	12.44	12.44	↑	0.00	0.00	0.00	→
18	Onions	Kg	1.42	41.13	44.06	43.30	40.09	34.17	5.28	↓	25.24	23.04	-1.72	↓
19	Bananas	Doz	1.39	77.93	76.83	75.05	5.83	-3.78	-3.70	↓	-2.40	-3.49	-2.32	↑
20	Curd	Kg	1.35	97.78	101.97	101.97	4.29	4.29	4.29	↓	0.00	0.30	0.00	↓
21	Tele. Local Call	Each	1.31	3.94	3.94	3.94	0.00	0.00	0.00	→	0.00	0.00	0.00	→
22	Potatoes	Kg	1.25	37.29	33.72	33.21	-4.04	-10.32	-10.94	↓	-0.82	0.69	-1.51	↓
23	Bread Plain Mid.Size (340-400 Gm)	Each	1.23	41.12	42.56	42.56	0.00	3.50	3.50	↑	0.00	0.00	0.00	→
24	Egg Hen (Farm)	Doz	1.19	96.98	96.27	96.86	1.76	-0.80	-0.12	↓	-0.07	-0.33	0.61	↑
25	Tomatoes	Kg	1.18	50.10	70.53	83.65	-17.68	27.75	66.97	↑	-9.26	-7.70	18.60	↑

## Weekly Trend in Major SPI Items ( -5 to +5)%

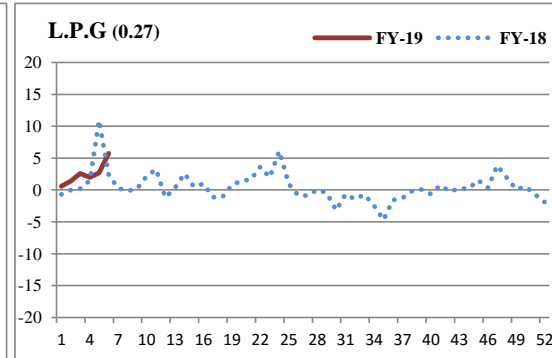
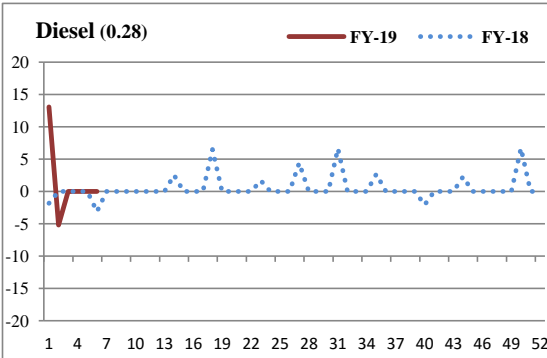
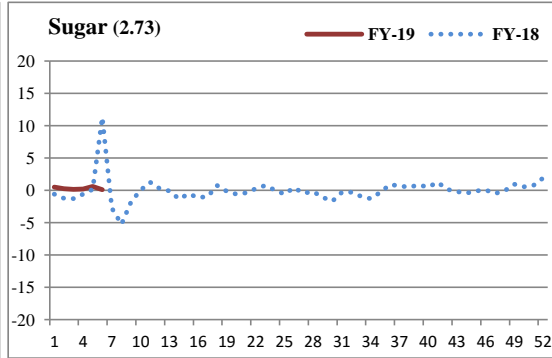
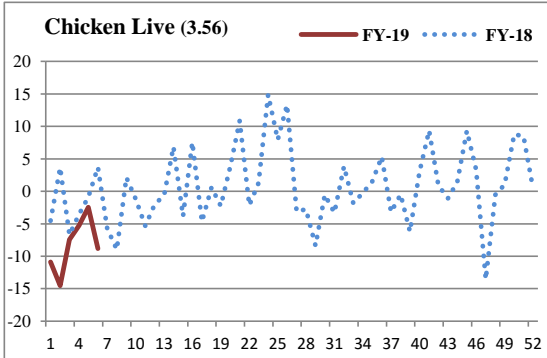




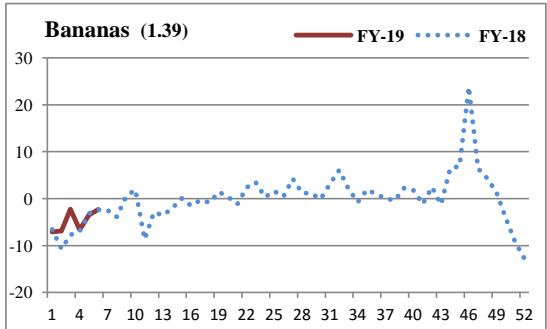
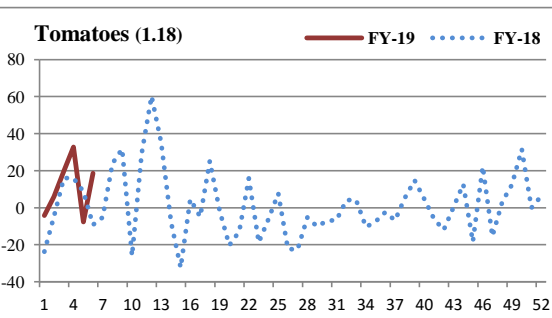
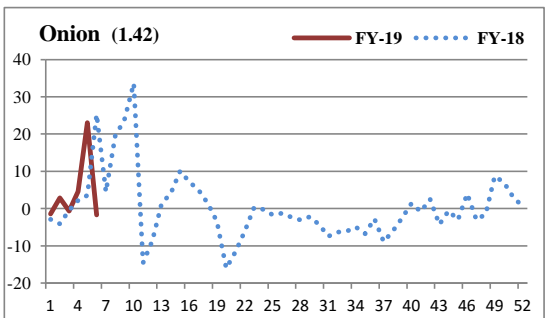
**Weekly Trend in Major SPI Items ( -10 to +10)%**



## Weekly Trend in Major SPI Items ( -20 to +20)%



## Weekly Trend in Major SPI Items ( Beyond $\pm 20\%$ )



Global Commodity Indices and Prices						Percentage change over		
Items	Unit	11-Aug-17	13-Jul-18	3-Aug-18	10-Aug-18	Previous week	Previous month	Previous year
<b>S&amp;P GSCI Commodity Index*</b>		<b>383.0</b>	<b>463.4</b>	<b>462.1</b>	<b>458.2</b>	<b>-0.9</b>	<b>-1.1</b>	<b>19.6</b>
<b>Bloomberg Commodity Index (BCOM)**</b>		<b>83.7</b>	<b>83.8</b>	<b>84.9</b>	<b>84.2</b>	<b>-0.8</b>	<b>0.5</b>	<b>0.6</b>
<b>Energy (S&amp;P Index)</b>		<b>170.8</b>	<b>236.0</b>	<b>232.1</b>	<b>229.5</b>	<b>-1.1</b>	<b>-2.7</b>	<b>34.4</b>
<b>Crude Oil (S&amp;P Index)</b>		<b>268.4</b>	<b>383.4</b>	<b>375.4</b>	<b>367.6</b>	<b>-2.1</b>	<b>-4.1</b>	<b>37.0</b>
NYMEX WTI (Sep 18)	US\$/barrel	49.0	70.0	68.5	67.6	-1.3	-3.3	38.1
ICE Brent (Oct 18)	US\$/barrel	51.9	75.3	73.2	72.8	-0.5	-3.3	40.2
Dubai Spot (Index)	US\$/barrel	49.9	71.3	72.2	70.7	-2.0	-0.8	41.8
Arab Light Spot Asia (Index)	US\$/barrel	50.2	73.5	73.8	73.0	-1.0	-0.6	45.4
<b>Coal (DJ US Total Market Index)</b>		<b>37.1</b>	<b>68.8</b>	<b>78.1</b>	<b>75.8</b>	<b>-3.0</b>	<b>10.1</b>	<b>104.5</b>
Coal (US)	US\$/MT	45.7	51.5	53.1	54.8	3.1	6.3	19.9
<b>Natural Gas (S&amp;P Index)</b>		<b>140.9</b>	<b>127.5</b>	<b>133.6</b>	<b>138.0</b>	<b>3.3</b>	<b>8.2</b>	<b>-2.0</b>
Natural Gas (Sep 18)	US\$/MMBTU	3.0	2.7	2.9	2.9	3.2	8.1	-2.2
<b>Industrial metals (S&amp;P Index)</b>		<b>350.1</b>	<b>346.0</b>	<b>344.0</b>	<b>347.8</b>	<b>1.1</b>	<b>0.5</b>	<b>-0.7</b>
Aluminum (LME, 3m future)	US\$/MT	2042.5	2031.0	2028.0	2105.0	3.8	3.6	3.1
Copper (LME, 3m future)	US\$/MT	6411.0	6237.0	6206.0	6190.0	-0.3	-0.8	-3.4
Lead (LME, 3m future)	US\$/MT	2326.0	2202.0	2115.0	2098.0	-0.8	-4.7	-9.8
Nickel (LME, 3m future)	US\$/MT	10660.0	13975.0	13550.0	13820.0	2.0	-1.1	29.6
Tin (LME, 3m future)	US\$/MT	20305.0	19795.0	19600.0	19500.0	-0.5	-1.5	-4.0
Zinc (LME, 3m future)	US\$/MT	2896.5	2578.0	2631.0	2547.0	-3.2	-1.2	-12.1
HR Coil Steel US (Aug 18)	US\$/MT	630.0	906.0	894.0	901.0	0.8	-0.6	43.0
<b>Precious metals (S&amp;P Index)</b>		<b>1698.9</b>	<b>1635.4</b>	<b>1598.0</b>	<b>1592.1</b>	<b>-0.4</b>	<b>-2.6</b>	<b>-6.3</b>
Gold (Spot)	US\$/Troy Ounce	1289.4	1241.5	1213.7	1211.7	-0.2	-2.4	-6.0
Platinum (Spot)	US\$/Troy Ounce	985.0	828.8	831.0	827.6	-0.4	-0.1	-16.0
Silver (Spot)	US\$/Troy Ounce	17.1	15.8	15.4	15.3	-0.6	-3.1	-10.5
<b>Agriculture (S&amp;P Index)</b>		<b>287.0</b>	<b>276.5</b>	<b>295.0</b>	<b>292.5</b>	<b>-0.8</b>	<b>5.8</b>	<b>1.9</b>
Cotton (NYB-ICE, Oct 18)	US cents/pounds	69.2	88.9	88.7	85.9	-3.2	-3.4	24.0
Sugar (LIF, Oct 18)	US\$/MT	291.0	326.7	324.3	315.7	-2.7	-3.4	8.5
Corn (CBOT, Sep 18)	US\$/MT	142.0	134.4	145.6	140.8	-3.2	4.8	-0.8
Rice (CBOT, Sep 18)	US\$/MT	275.5	264.3	253.5	232.6	-8.2	-12.0	-15.6
Wheat (CBOT, Sep 18)	US\$/MT	161.4	182.6	204.4	200.9	-1.7	10.0	24.5
Soybeans (CBOT, Aug 18)	US\$/MT	344.7	300.8	325.6	310.8	-4.5	3.3	-9.8
Palm oil (Bursa Malaysia, May 18)	US\$/MT	640.2	585.9	581.4	581.2	0.0	-0.8	-9.2
<b>Others</b>								
Urea Granular (US Gulf)	US\$/MT	202.0	260.0	255.0	268.0	5.1	3.1	32.7
DAP (US Gulf)	US\$/MT	337.0	420.0	434.0	434.0	0.0	3.3	28.8

Source: Bloomberg

LME: London Metal Exchange, CBOT: Chicago Board of Trade, NYMEX : New York Mercantile Exchange, DJ:Dow Jones

\* The S&P GSCI(standard&poor's Goldman sachs commodity Index ) is widely recognized as a leading measure of general price movements and inflation in the world economy.

It provides investors with a reliable and publicly available benchmark for investment performance in the commodity markets.

\*\*Bloomberg Commodity Index(BCOM) reflects commodity futures price movements

