

## Primary Income (Debit)

**Series Level Information** Current Account, Primary Income

**Title** Debit Transactions- Moving Holidays  
Strike days and seasonally adjusted

**Unit** Million US Dollars

**Last update** April 21, 2017

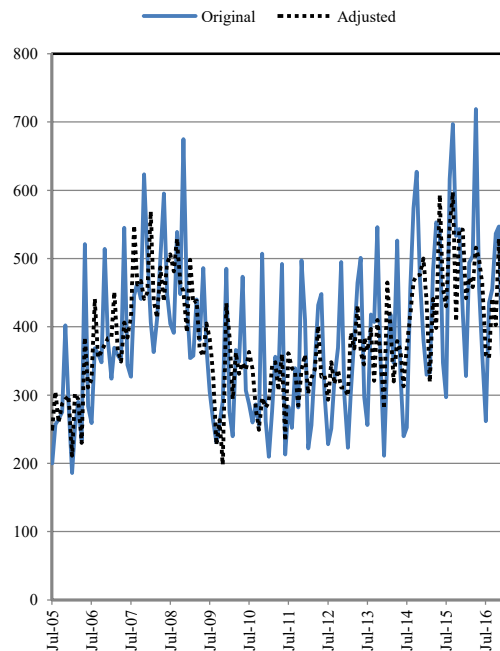
**Decimal** Zero

**Collection** Aggregated Flows

**Frequency** Monthly

**Source** State Bank of Pakistan, ITRS (Exchange  
Records), Exchange Companies

**Adjustments** Using X-12 ARIMA Methodology Data  
Adjusted for Calendar Effects Strike Days  
and Moving Holidays



Original Series												
Period	Jul	Aug	Sep	Oct	Nov	Dec	Jan	Feb	Mar	Apr	May	Jun
FY06	200	257	264	275	402	287	186	251	290	234	521	284
FY07	259	368	361	348	514	380	324	369	358	351	545	345
FY08	327	446	464	441	623	509	406	363	413	501	595	448
FY09	405	391	539	448	675	435	354	358	440	381	486	369
FY10	305	262	231	259	291	485	275	240	366	349	473	307
FY11	287	260	286	256	507	262	210	276	356	328	492	213
FY12	283	252	339	282	497	410	222	256	350	431	448	301
FY13	228	251	324	369	495	299	223	303	384	465	501	315
FY14	297	256	418	407	546	349	211	355	418	347	526	333
FY15	240	253	457	574	627	471	381	330	333	482	553	541
FY16	347	297	616	697	533	543	420	328	494	504	719	456
FY17	357	262	435	455	536	547	341	383	391			

Seasonally Adjusted Series												
Period	Jul	Aug	Sep	Oct	Nov	Dec	Jan	Feb	Mar	Apr	May	Jun
FY06	251	305	260	287	294	299	211	302	294	230	384	311
FY07	323	441	355	364	374	383	384	451	365	349	406	384
FY08	414	548	462	467	441	450	569	438	413	487	437	492
FY09	506	481	529	465	452	392	498	435	438	366	357	405
FY10	383	330	227	263	198	435	385	294	362	331	347	337
FY11	363	338	281	249	296	282	290	344	348	307	360	233
FY12	361	339	334	285	337	359	302	325	338	401	327	329
FY13	293	348	316	337	311	311	299	391	368	431	364	345
FY14	384	365	397	321	410	357	280	465	399	320	379	366
FY15	313	369	419	466	475	476	500	438	319	441	398	593
FY16	457	430	546	597	408	543	542	442	472	458	516	498
FY17	463	359	354	442	403	529	423	515	365			

Contact Person: Mr. Shamsul Arifeen, Senior Joint Director  
Phone No. 021-99221113  
Email: [shamsul.arifeen@sbp.org.pk](mailto:shamsul.arifeen@sbp.org.pk)  
For Feedback: <http://www.sbp.org.pk/stats/survey/index.asp>