

Secondary Income (Debit)

Series Level Information Current Account, Secondary Income

Title Debit Transactions- Moving Holidays
Strike days and seasonally adjusted

Unit Million US Dollars

Last update April 21, 2017

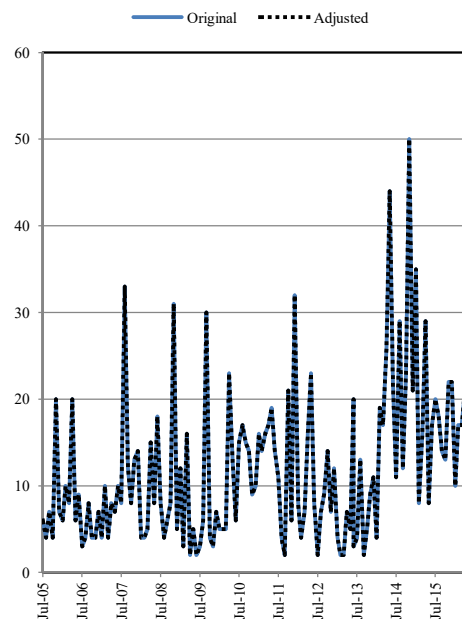
Decimal Zero

Collection Aggregated Flows

Frequency Monthly

Source State Bank of Pakistan, ITRS (Exchange
Records), Exchange Companies etc

Adjustments Using X-12 ARIMA Methodology Data
Adjusted for Calendar Effects Strike Days
and Moving Holidays



Original Series												
Period	Jul	Aug	Sep	Oct	Nov	Dec	Jan	Feb	Mar	Apr	May	Jun
FY06	6	4	7	4	20	7	6	10	8	20	6	9
FY07	3	4	8	4	4	7	4	10	4	8	7	10
FY08	8	33	12	8	13	14	4	4	5	15	8	18
FY09	8	4	6	8	31	5	12	3	16	2	5	2
FY10	3	6	30	4	3	7	5	5	5	23	13	6
FY11	15	17	15	14	9	10	16	14	16	17	19	14
FY12	11	4	2	21	6	32	8	4	7	16	23	8
FY13	2	7	9	14	7	12	4	2	2	7	5	20
FY14	3	4	13	2	5	9	11	4	19	17	26	44
FY15	22	11	29	12	23	50	21	35	8	16	29	8
FY16	17	20	18	14	13	22	22	10	17	17	21	23
FY17	12	28	32	9	25	17	8	13	24			

Seasonally Adjusted Series												
Period	Jul	Aug	Sep	Oct	Nov	Dec	Jan	Feb	Mar	Apr	May	Jun
FY06	6	4	7	4	20	7	6	10	8	20	6	9
FY07	3	4	8	4	4	7	4	10	4	8	7	10
FY08	8	33	12	8	13	14	4	4	5	15	8	18
FY09	8	4	6	8	31	5	12	3	16	2	5	2
FY10	3	6	30	4	3	7	5	5	5	23	13	6
FY11	15	17	15	14	9	10	16	14	16	17	19	14
FY12	11	4	2	21	6	32	8	4	7	16	23	8
FY13	2	7	9	14	7	12	4	2	2	7	5	20
FY14	3	4	13	2	5	9	11	4	19	17	26	44
FY15	22	11	29	12	23	50	21	35	8	16	29	8
FY16	17	20	18	14	13	22	22	10	17	17	21	23
FY17	12	28	32	9	25	17	8	13	24			

Note: Secondary Income (Debit) does not follow any seasonal pattern so the original data has been used as adjusted series.

Contact Person: Mr. Shamsul Arifeen, Senior Joint Director

Phone No. 021-99221113

Email: shamsul.arifeen@sbp.org.pk

For Feedback: <http://www.sbp.org.pk/stats/survey/index.asp>