

## Secondary Income (Credit)

**Series Level Information** Current Account, Secondary Income

**Title** Credit Transactions- Moving Holidays  
Strike days and seasonally adjusted

**Unit** Million US Dollars

**Last update** April 21, 2017

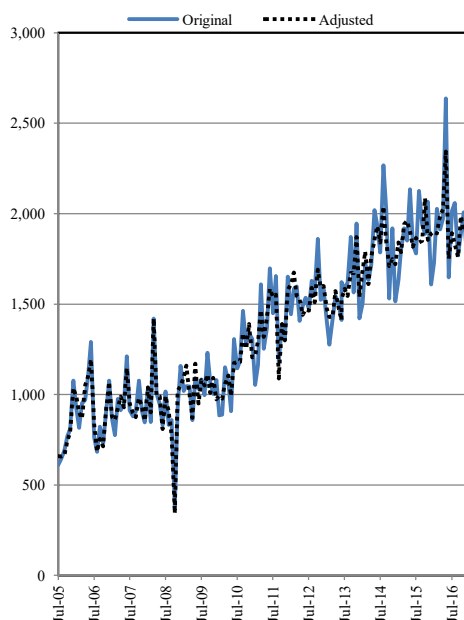
**Decimal** Zero

**Collection** Aggregated Flows

**Frequency** Monthly

**Source** State Bank of Pakistan, ITRS (Exchange  
Records), Exchange Companies etc

**Adjustments** Using X-12 ARIMA Methodology Data  
Adjusted for Calendar Effects Strike Days  
and Moving Holidays



Original Series												
Period	Jul	Aug	Sep	Oct	Nov	Dec	Jan	Feb	Mar	Apr	May	Jun
FY06	612	643	691	767	809	1,077	926	817	950	972	1,101	1,290
FY07	763	683	822	729	900	1,077	863	775	976	914	945	1,211
FY08	911	880	905	1,077	912	846	1,033	848	1,419	1,008	947	832
FY09	1,017	833	858	374	926	1,157	1,019	1,046	1,045	859	1,090	1,032
FY10	1,083	997	1,231	1,066	1,004	1,080	885	888	1,151	1,073	908	1,306
FY11	1,145	1,188	1,462	1,276	1,340	1,308	1,053	1,163	1,609	1,254	1,368	1,697
FY12	1,450	1,655	1,182	1,387	1,305	1,652	1,444	1,582	1,596	1,407	1,492	1,534
FY13	1,475	1,629	1,562	1,860	1,524	1,583	1,406	1,277	1,414	1,543	1,497	1,413
FY14	1,622	1,577	1,619	1,870	1,564	1,945	1,422	1,504	1,729	1,633	1,717	2,020
FY15	1,933	1,786	2,267	2,015	1,531	1,919	1,515	1,633	1,800	1,919	1,852	2,134
FY16	1,832	1,780	2,126	1,941	1,888	2,065	1,608	1,728	2,026	1,914	1,974	2,636
FY17	1,647	2,013	2,059	1,769	1,891	2,007	1,755	1,757	2,088			

Seasonally Adjusted Series												
Period	Jul	Aug	Sep	Oct	Nov	Dec	Jan	Feb	Mar	Apr	May	Jun
FY06	658	657	666	742	793	1,036	988	902	868	1,050	1,101	1,195
FY07	838	685	755	714	908	1,070	877	859	926	988	929	1,146
FY08	951	897	875	981	937	855	1,040	901	1,420	993	989	810
FY09	992	905	772	344	1,020	1,050	1,094	1,160	1,004	872	1,170	950
FY10	1,080	1,050	1,110	1,010	1,092	974	992	978	1,059	1,105	992	1,174
FY11	1,180	1,180	1,338	1,254	1,390	1,206	1,216	1,298	1,466	1,318	1,426	1,584
FY12	1,540	1,553	1,089	1,390	1,300	1,577	1,610	1,675	1,546	1,529	1,440	1,471
FY13	1,463	1,590	1,509	1,690	1,593	1,600	1,475	1,429	1,430	1,571	1,480	1,410
FY14	1,525	1,584	1,546	1,672	1,670	1,871	1,540	1,690	1,791	1,610	1,760	1,854
FY15	1,931	1,841	2,039	1,841	1,710	1,748	1,720	1,840	1,787	1,943	1,960	1,900
FY16	1,818	1,865	1,840	1,850	2,085	1,854	1,890	1,900	1,890	1,988	2,024	2,343
FY17	1,750	1,892	1,832	1,761	1,985	1,904	1,988	1,950	2,057			

**Note:** Before analysing data, "grants for budgetary support" is subtracted from Secondary Income Cr. which is added again after analysis.

Contact Person: Mr. Shamsul Arifeen, Senior Joint Director

Phone No. 021-99221113

Email: [shamsul.arifeen@sbp.org.pk](mailto:shamsul.arifeen@sbp.org.pk)

For Feedback: <http://www.sbp.org.pk/stats/survey/index.asp>